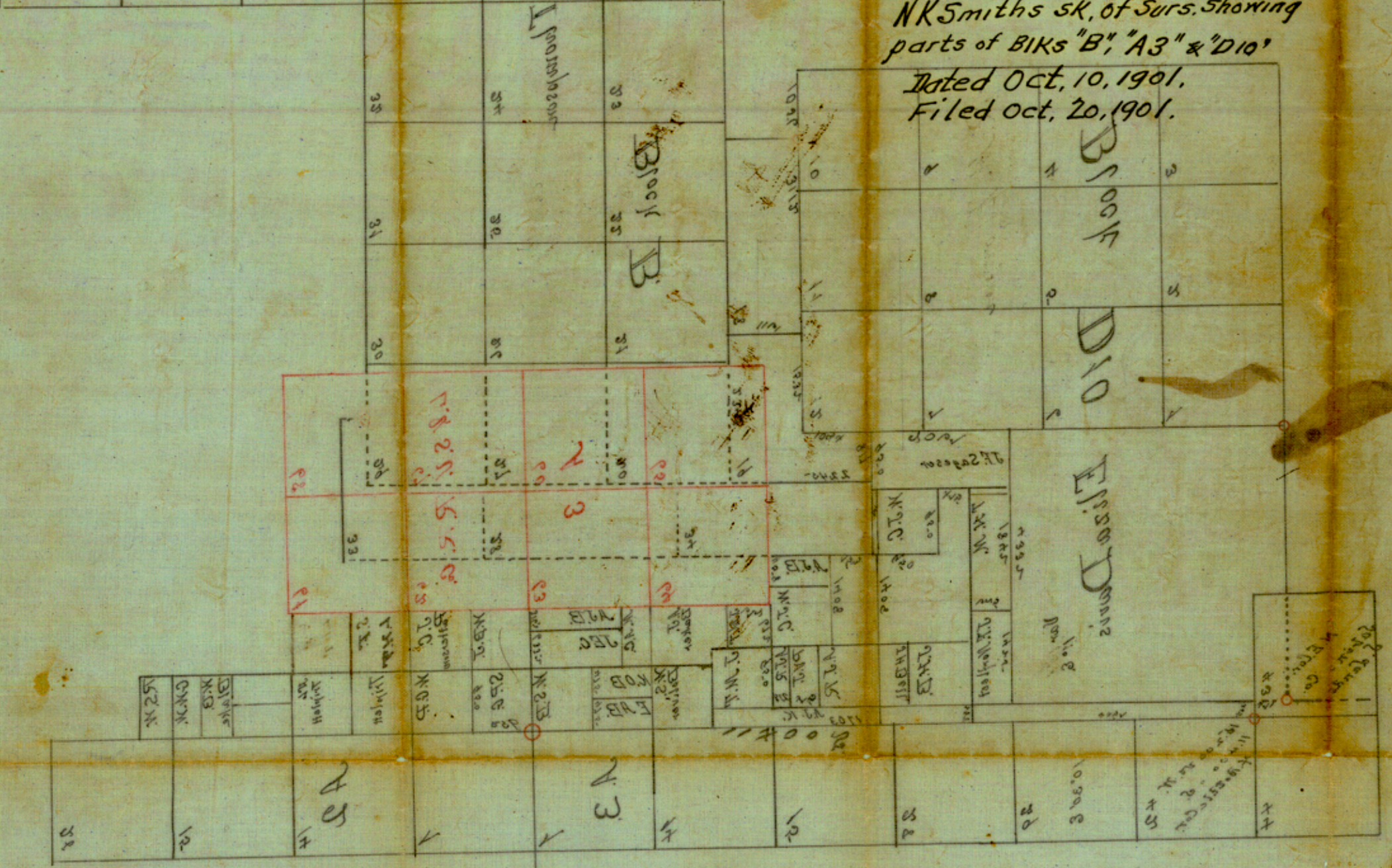


1	10	11	12	13
2	8	19	19	14

5 Ketch # 16 "D"
Hale Co. 5 Ketches
Filed in Genl. Ld. Office
Oct. 20th 1901
Wisc

NK Smith's SK of Surs. showing
parts of BIKs "B", "A3" & "D10"
Dated Oct. 10, 1901.
Filed Oct. 20, 1901.

County 24721

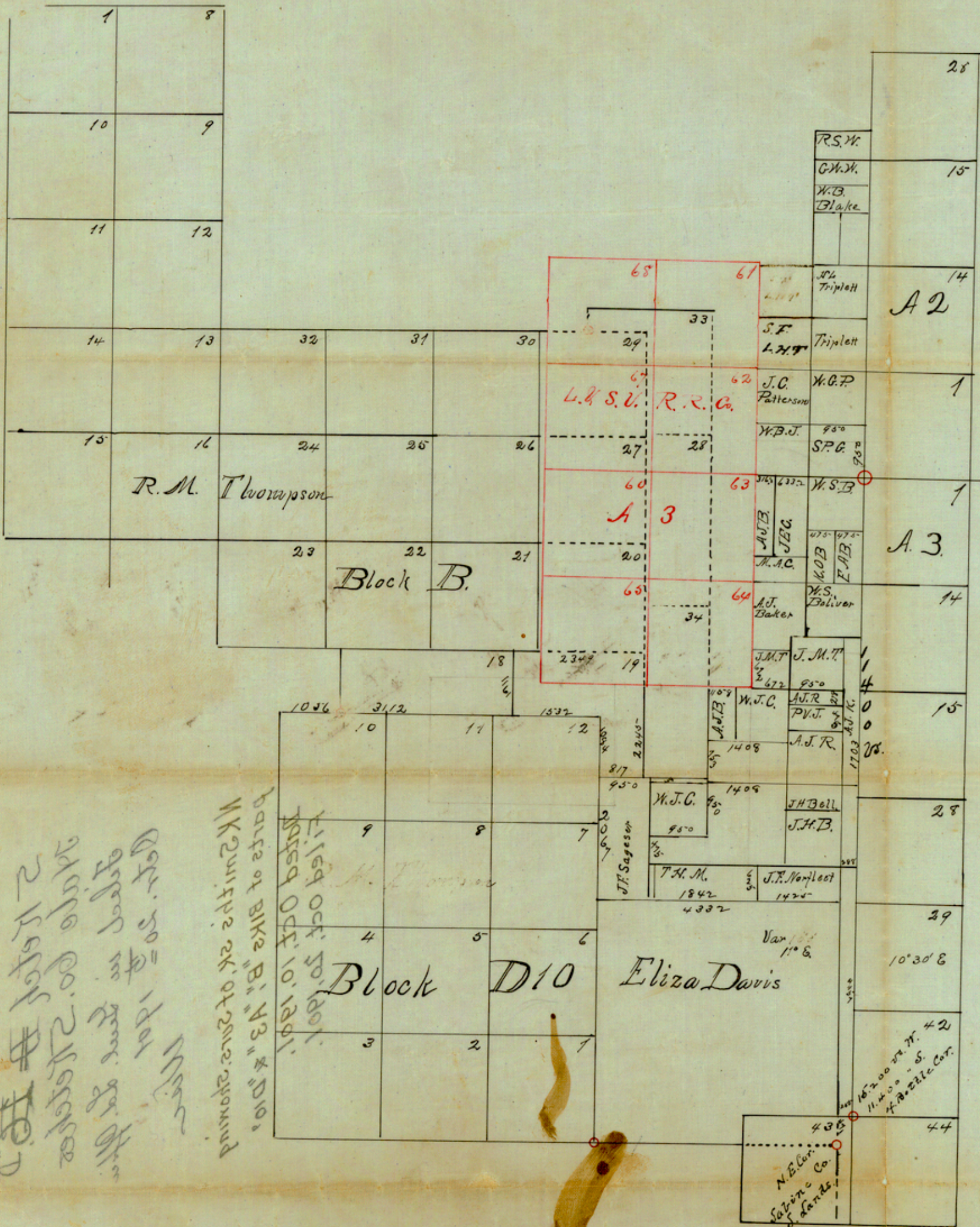


Subscribed and sworn to before me this 11th day of November 1901.

Notary Public for the State of Wisconsin
in and for the County of Hancock

County 24721

CC. W. W. W. W. W.
A 1



A 1
GCYSTRRG
9/24

Bottle Corner

Sketch showing portion of Hale Co. from actual surveys on ground starting from Bottle Corner in Hale Co. & Rock mount. at junction of North Fork & Yellow House creek in Lutzock Co.

Planned by
Oct. 11th 1907
B.W. Northcutt
Surveyor Hale Co.

Copy to # 1001
copy to # 1002
copy to # 1003
copy to # 1004
copy to # 1005
copy to # 1006
copy to # 1007
copy to # 1008
copy to # 1009
copy to # 1010

Parts of Block B, A3 & D10
W. Quilley's sk. of same ground
Filed Oct. 10, 1901.
Filed Oct. 10, 1901.

1911