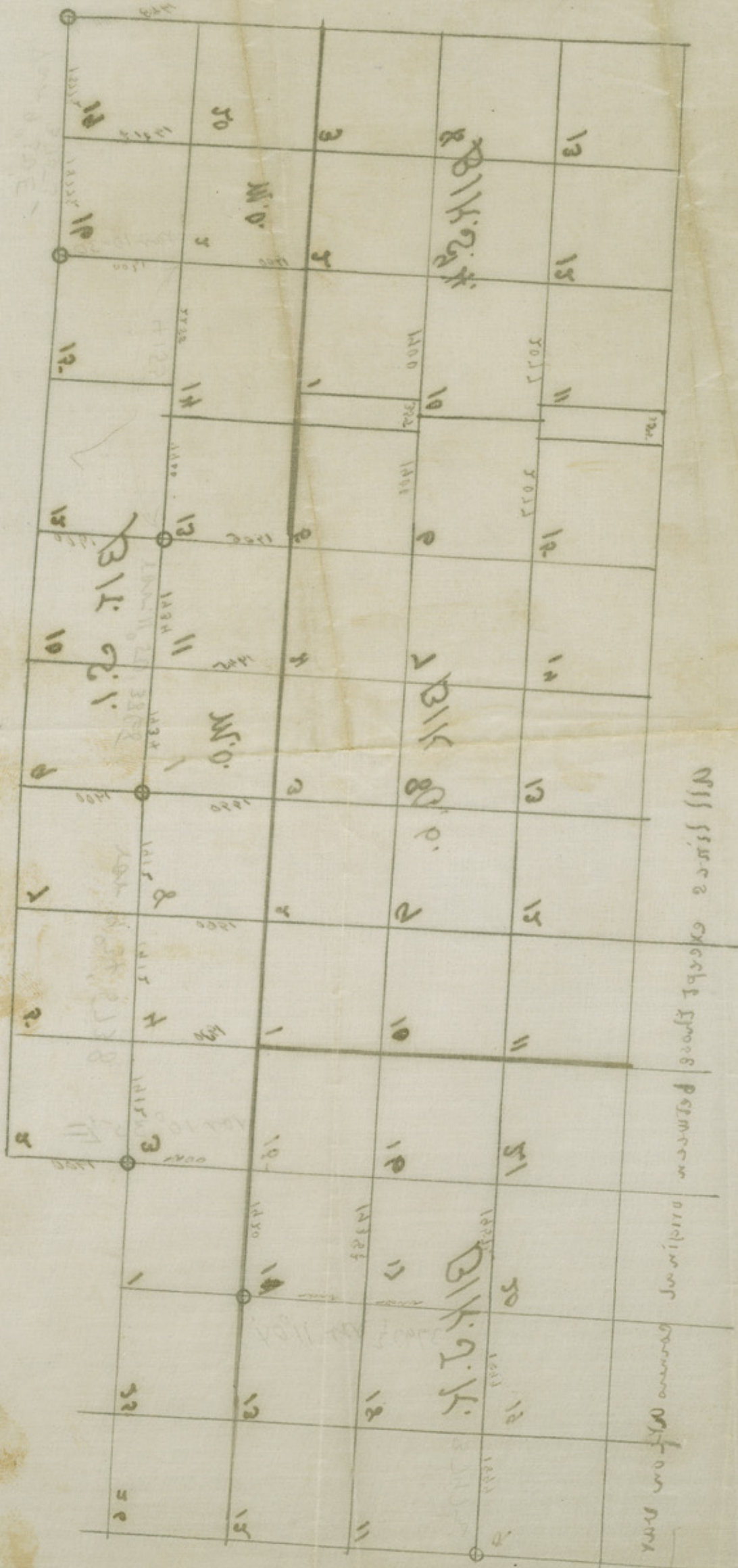


Plain sketch showing parts of Blks 51, MO, SA, A6, & JK.

No author. No dates.

Hale County

County 24753

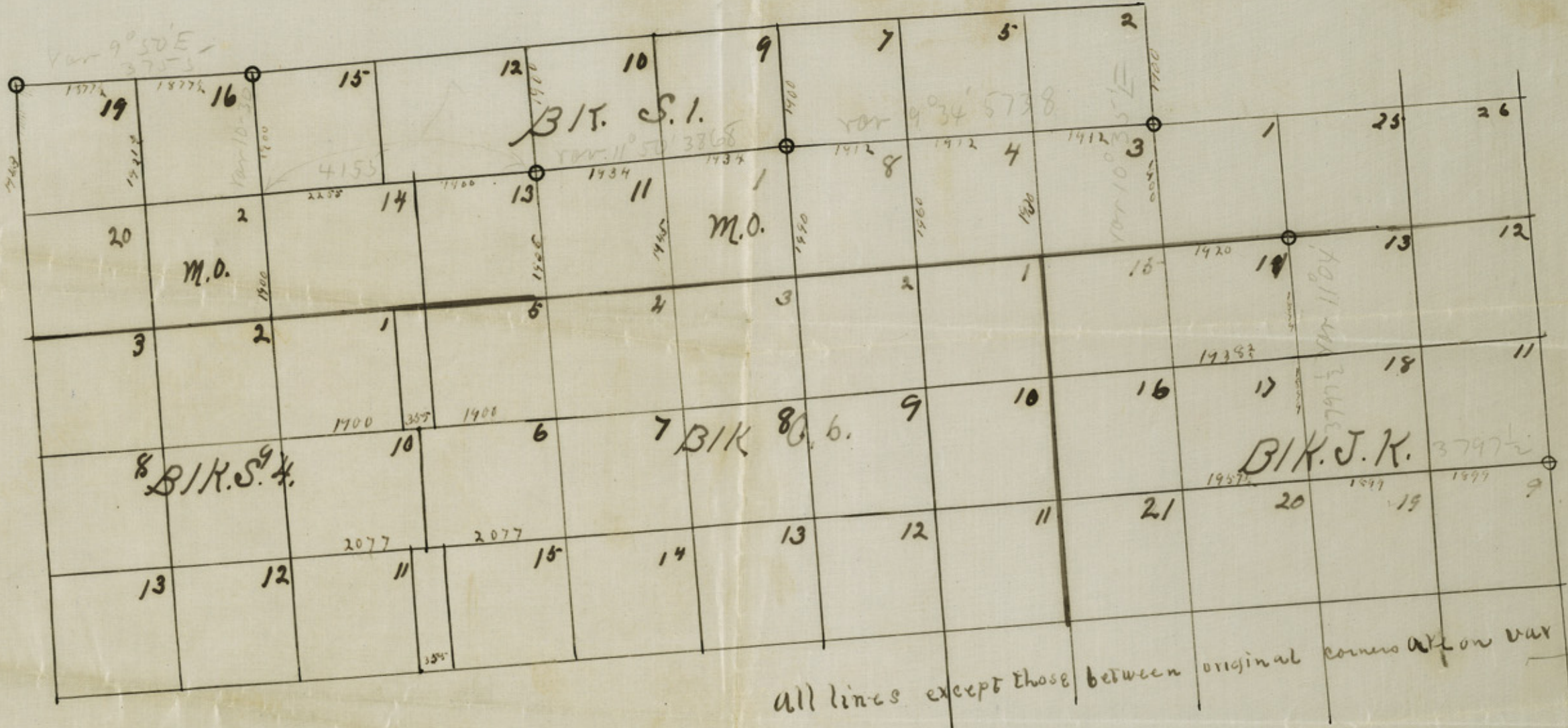


All issues except those returned

originals returned on 10/30/51

County 24753

private sketch showing  
 parts of BIKs 25, M.O., 24  
 No. 2 & 11. No dates.  
 No other No. dates.  
 K. Williams



All lines except those between original corners are on var 10° 30' E.

Sketch with W. J. Williams  
 Connections to Summerfield's Corners.  
 E. J. Williams