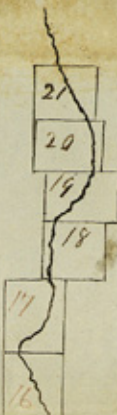


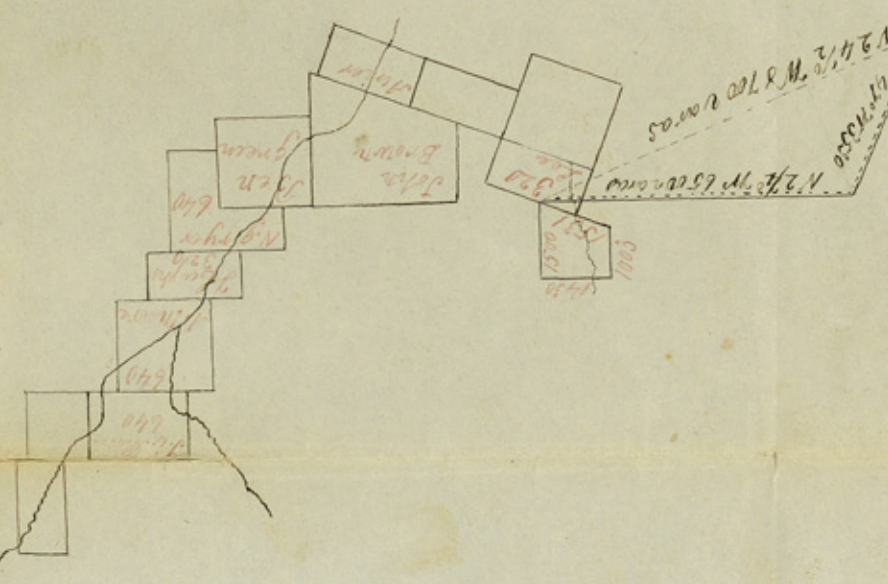
Mr. Quincy has not had time to make out the field notes for
 the work on Lighthouse creek but the foregoing sketch is a true
 representation of the work made by me on my last trip the
 connecting line is to the work on the waters of the South Lead & Love
 Lead Survey is on the map and is the upper Survey on the creek
~~South of the South Lead~~ the Survey west of it and marked No 22 begins
 on the west line of Lee S 19 W 1100 varas from his N.W. corner for the
 North East corner of this Survey - which is in the name of Geo. Sholl by
 ass^t J. Brichta = 320 acres

William Armstrong District
 Surveyor for Milam District

Sketch
 Title 35
 Sketches - Milam



South fork of Cow House creek



File 4th section
Sketches — File 30

— Milam Dist. —

Head waters of the Leon

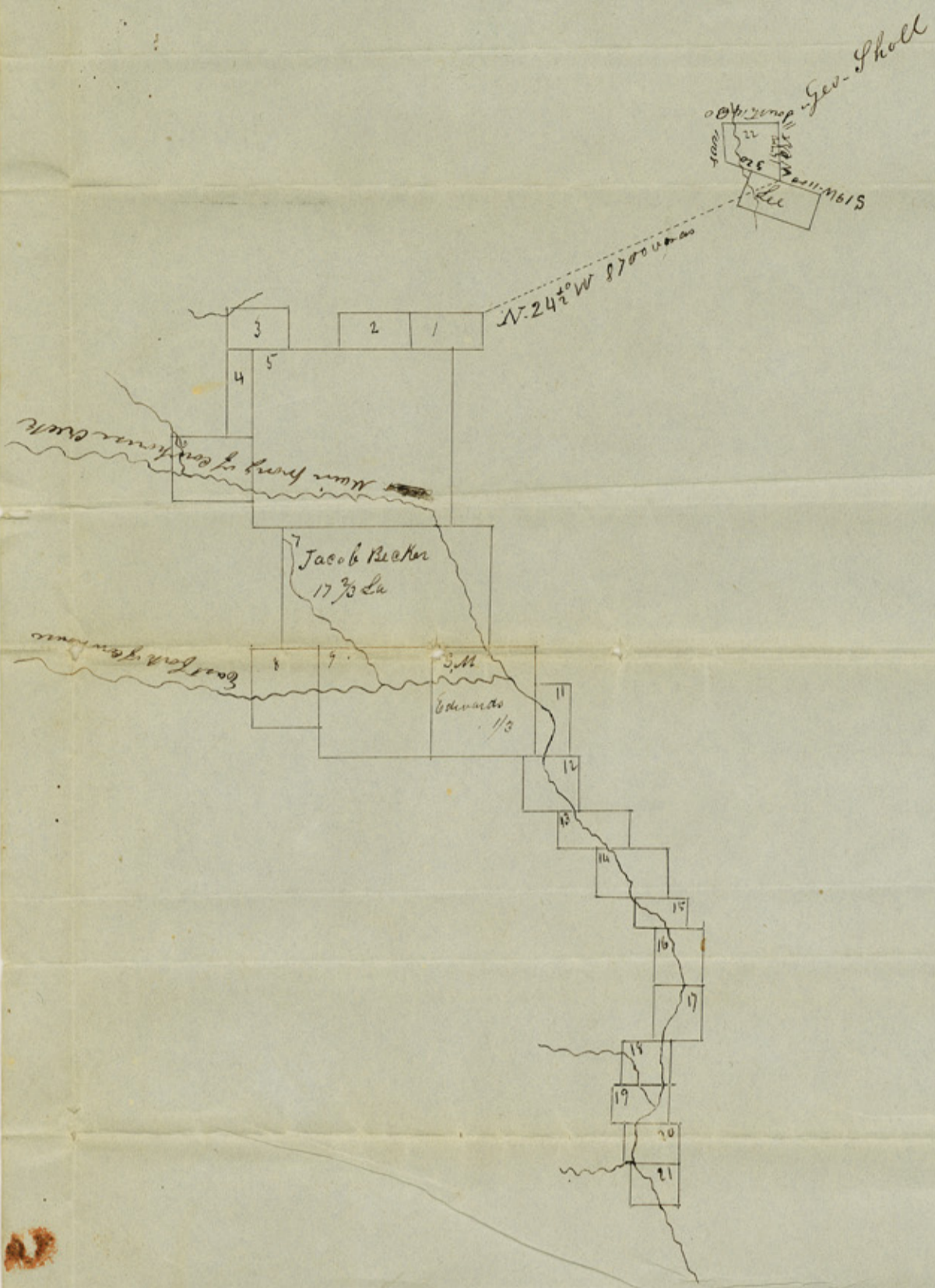
— Received July 1851 —

Coryelle County

Plotted on Maps

Hamilton Co

N.W. cor. of said Co.



Mr. Cluibee I have not had time to make out the field notes for the work on Conkner creek but the foregoing sketch is a true representation of the work made by me on my last trip. The connecting line is to the work on the ~~west~~ ~~of the South Lead & Love~~ ~~Lead~~ ~~Sung~~ is on the map and is the upper Sung on the creek ~~South of the South Lead~~ the Sung west of it and marked No 22 begins on the west line of Sec S 19 W 1100 varas from his N.W corner for the north east corner of this Sung - which is in the name of Geo. Sholl by act of Brichta = 320 acres
 counter 42262

William Armstrong District
 Surveyor for Milam District

Milam