



GEORGE J. MOORE

2057

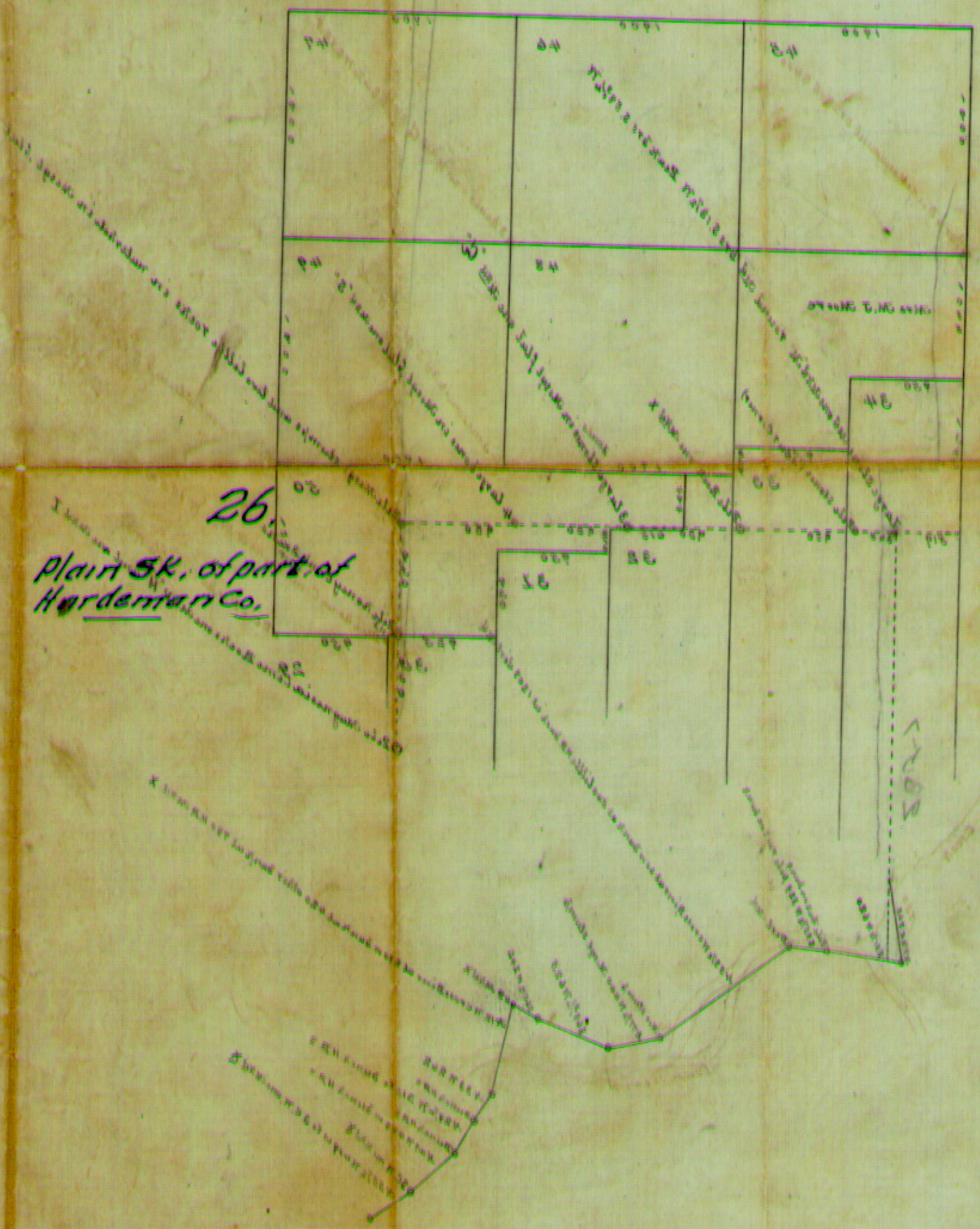
- N 33 W 262
- N 29 W 315 to distance N 23 E
- N 47 W 499 to distance N 23 E
- N 30 W 262
- N 55 1/2 W 429 to 3 C. T. corner N 23 E

Plaintiff's Exhibit  
 Hardman Co.  
 vs.  
 Defendant's Exhibit  
 H. J. Moore

Handwritten signature and notes in the bottom right corner, including the name 'George J. Moore' and some illegible scribbles.



26  
Plan SK. of part of  
Hardeman Co.



County 25038

County 25038

26  
Hardeman