



BASCOM GILES  
COMMISSIONER  
GENERAL LAND OFFICE  
AUSTIN 14, TEXAS

to R.C.

HARDIN COUNTY  
Sketch 21  
Copy of part of old map 7-18-03

SHOULD HAVE BEEN

32 a

counter 25167

4

Hardin Texas  
August 7<sup>th</sup> 1879

Geo W Turnbull Esq  
Austin Texas

Dear Sir

Please find enclosed  
Field Notes of Connecting Lines run  
to rectify the Washington County R. R. Co.  
Survey in Hardin County -  
I have failed as yet to find the Andrew  
G Swain Survey I have just returned  
from a five days hunt for its lines failed  
to find any of them. But was told to  
day that an old man by the name of Tom-  
tain that lives in the southern portion of this  
County could show me the corners of the  
Enoch Grigsby, 320 acre survey. If I  
can find the Grigsby I am sure that  
I can find the Swain, all the work  
that I do shall be done correctly,  
there has already been done too much  
guess work in this County as you will  
see by comparing my sketch with the  
old maps. I have had all the surveys to  
hunt up and place in their proper  
position and it has been a very long  
and tedious job. The surveyor office  
has been very badly managed in this  
County

62198  
I will go next week with the aforesaid  
Pomutau get him to show me the Gigsby  
Survey run a line to connect the Swain  
with the Mr. Bunnstead Survey on the East  
and the ~~Wingate~~ surveys on the West  
then your job will be done

If you can find the field notes of Samuel  
Cravy Primpston Survey of 320 acres  
of land on file in General Land Office  
please send me copy.

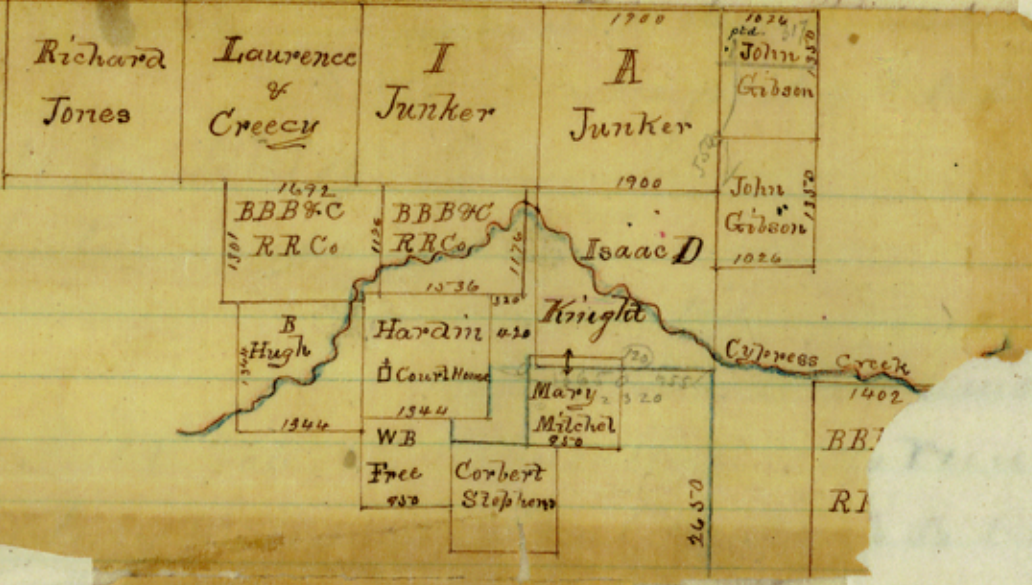
You will also find herewith  
a sketch the lines that is shaded  
blue are the lines that I have run for you  
you will also find herewith a Bill  
for 60¢ with a credit of 15¢ thereon  
you will please send me the 45¢ dollars

Yours Truly

RNB Tompkins

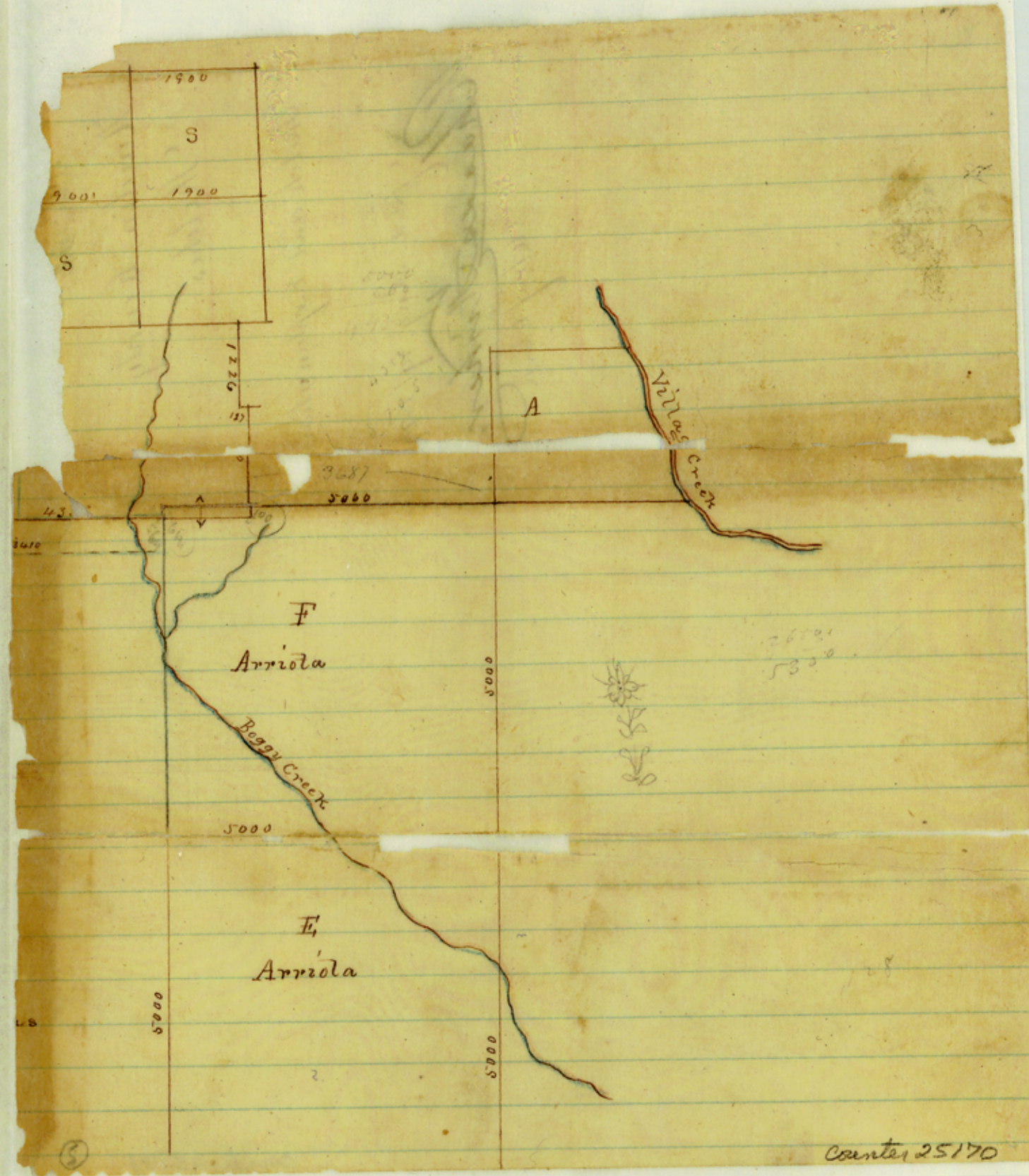
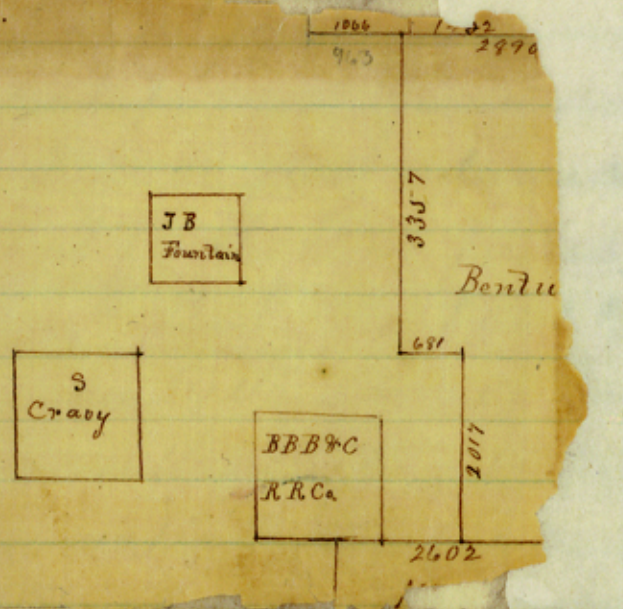
County Surveyor  
H Co

# 3



21-

Surs. on cypress Cr.  
 dated Aug. 7. 1879



Page 32 =

Hardin County  
Sketches

Sketch and Explanation

Filed Aug. 19 / 1879

Rhodes Fisher,  
Chief Clerk

*[Faint, mostly illegible handwritten notes on the left page, possibly including "Notes of a meeting..."]*

County 25171