

Field notes of  
Harden Co.

# 40

Filed 2<sup>nd</sup> Sept. 1839

at 10 o'clock A.M.

W. F. Cotton M.C. & Co.

By J. J. Dallas Deputy

Signed by Surveysors  
of Harden & Tyler Cos

# 100 ①

Reprints  
Feb. 1953  
Jawors

Filed Jan. 7/60  
E. W. P. Miller

counter 25180

V<sup>2</sup>

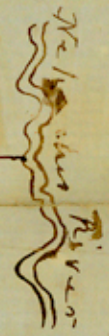
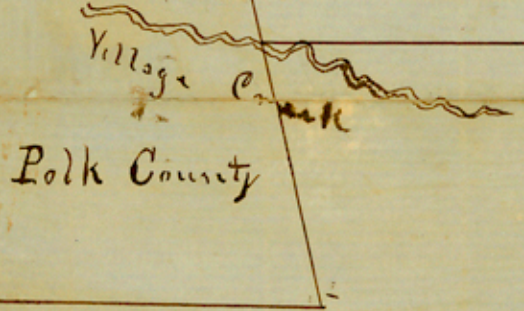
I Certify that the above instrument of writing was filed  
in my Office on the 2<sup>nd</sup> day of September A.D. 1839 at  
10 O'Clock A.M. and was duly recorded by me same time in  
Book A pages 1314 132

Witness My hand and seal of Office this the  
2<sup>nd</sup> day of September A.D. 1839

W. F. Cotton. Clerk of the Court.

By J. P. Dollard Deputy

# Tyler County



The State of Texas } Field notes of a survey of the County line between Tyler and  
 County of Tyler } Hardin Counties made in accordance with orders made  
 by said Counties in their respective County Courts appointing  
 E. S. Pitts of Tyler & Wm Forbes of Hardin surveyors to run said line They did pro-  
 ceed in accordance with said orders to run and mark said line

Beginning at the S.W. corner of said Tyler County on the E. boundary line of Polk  
 County where said Polk County line crosses Village or Big Sandy creek at small White  
 Oak marked "Tyler Co" from which a level run 6 in. said Run N 24° W & vs. from which the N.W.  
 corner of a survey of 477 acres of Land made for J. J. Hatton bears East 89° 35' vs and 265 vs  
 North

Thence ran East marking said boundary line at 7546 vs crossed the road leading from  
 Hollands ferry to Livingston at 10920 vs Kimball creek 10 vs wide course S. E. at 18570 vs. Hickory creek  
 15 vs. wide E. S. E. at 28600 vs Turkey creek 12 vs wide E. S. at 24100 vs road leading from Modville  
 to Beaumont at 29670 vs. road from Town Bluff to McKinney ferry at 32310 vs. Thousonin creek at  
 38050 vs. creek creek 12 vs wide E. S. at 41820 vs road from Town Bluff to Beaumont at 53100 vs  
 stake on the W. bank of the Neches River from which a pin oak for a corner 2 1/2 feet diam marked thus H X above  
 water beach bears N 106° 42' vs which is 10100 vs east and 1413 vs north of the S.W. corner of a league  
 survey made for W. N. Co. Thus completing the said line Surveyed March 1<sup>st</sup> 1859

- |                 |   |         |
|-----------------|---|---------|
| W. H. Rogers    | } | Chain   |
| Walter Williams |   |         |
| J. Thompson     |   |         |
| J. Hutton       |   |         |
| A. Bourdexter   |   |         |
| E. M. Stephens  | } | Cassius |

E. S. Pitts and Wm Forbes surveyors appointed as aforesaid  
 do hereby certify that the foregoing survey was made ac-  
 cording to Law and that the limits boundaries & corners  
 with the marks natural and artificial are truly described  
 in the foregoing plat and field notes Given under  
 our hands on this the 1<sup>st</sup> day of June A.D. 1859

E. S. Pitts }  
 Wm Forbes } Surveyors

39+40

~~28~~  
~~40~~  
Hardin co

Office sketches of surs  
lying East of Hardin Co sh<sup>l</sup>  
Land Surs,

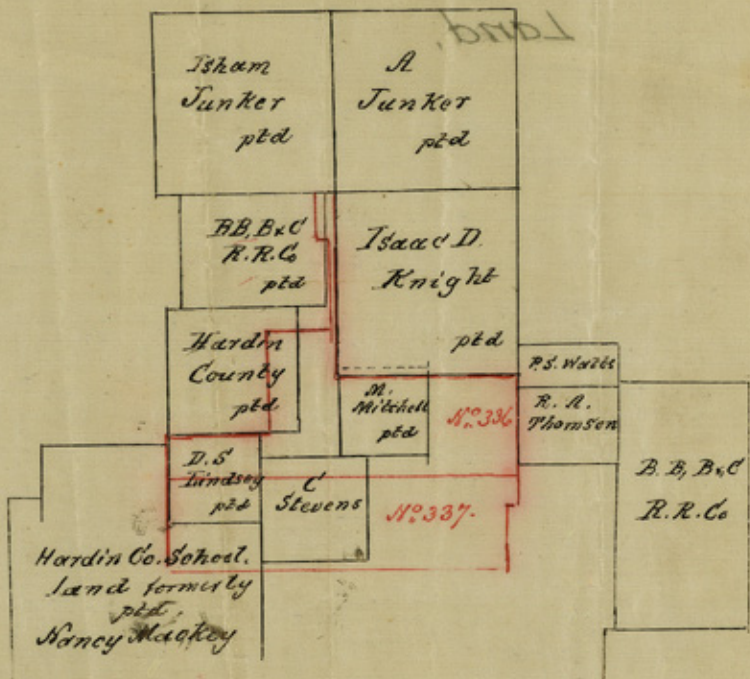
4'

counter 25183

Hardin Co. - 3d - 28

Office sk. of  
Surs. East of  
Hardin County

B.



Y

28122

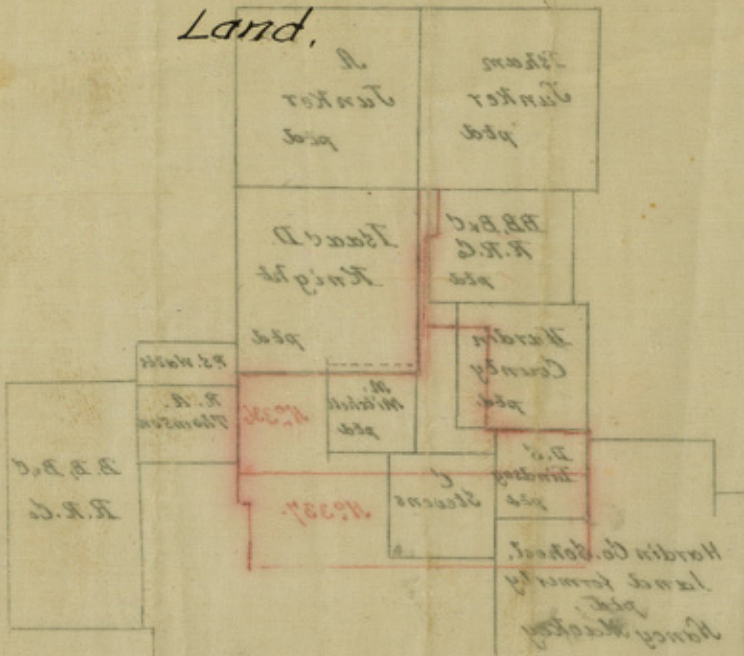
Counter 25187

Counter 25184

Y

39 - ~~28~~ - Hardin Co.

Office sk, of  
Surs. East of  
Hardin Co Schl  
Land.



B

B. Y. Jones

y

Counter 25185

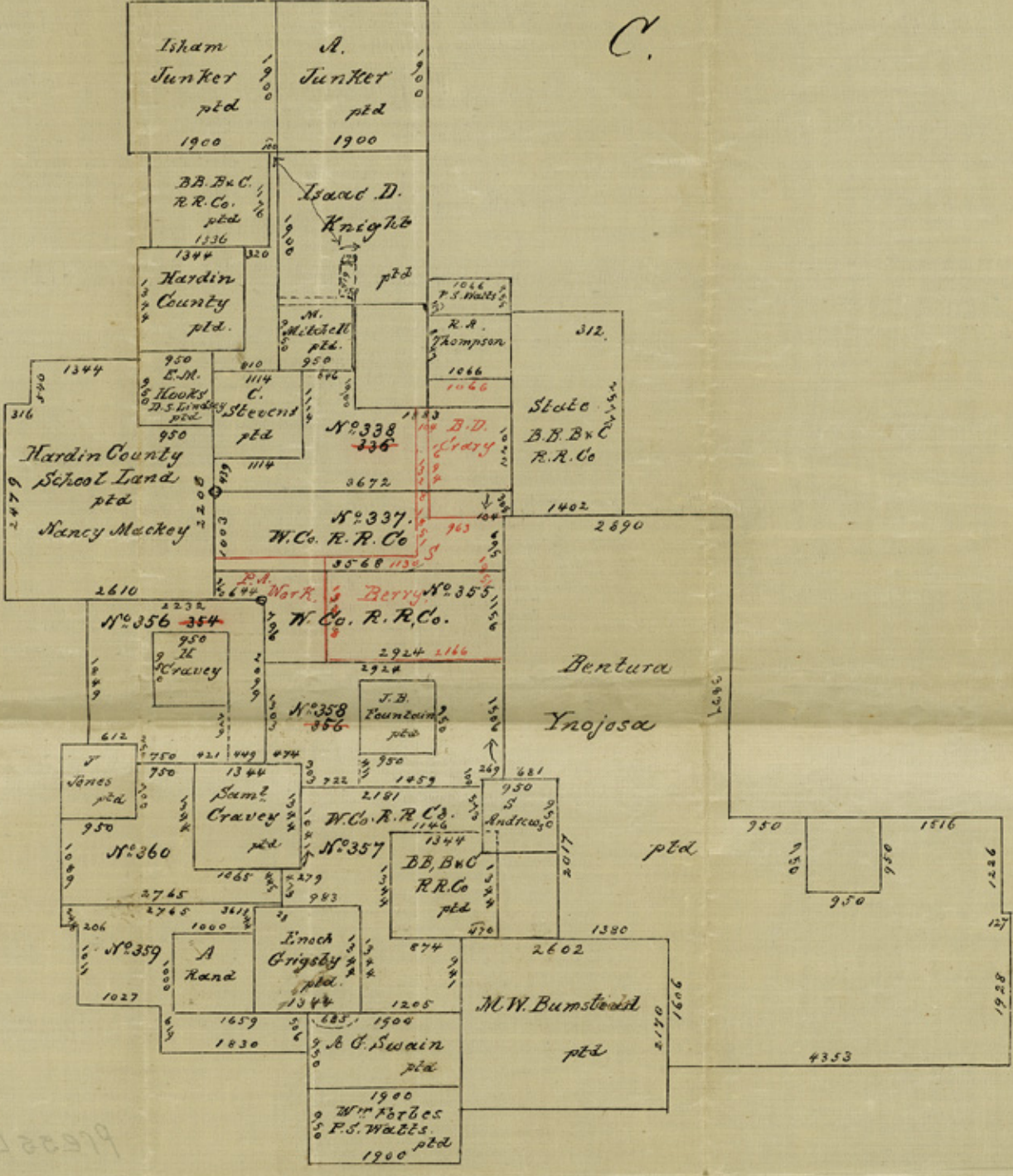
Counter 25185

no date

x

05-10-1900

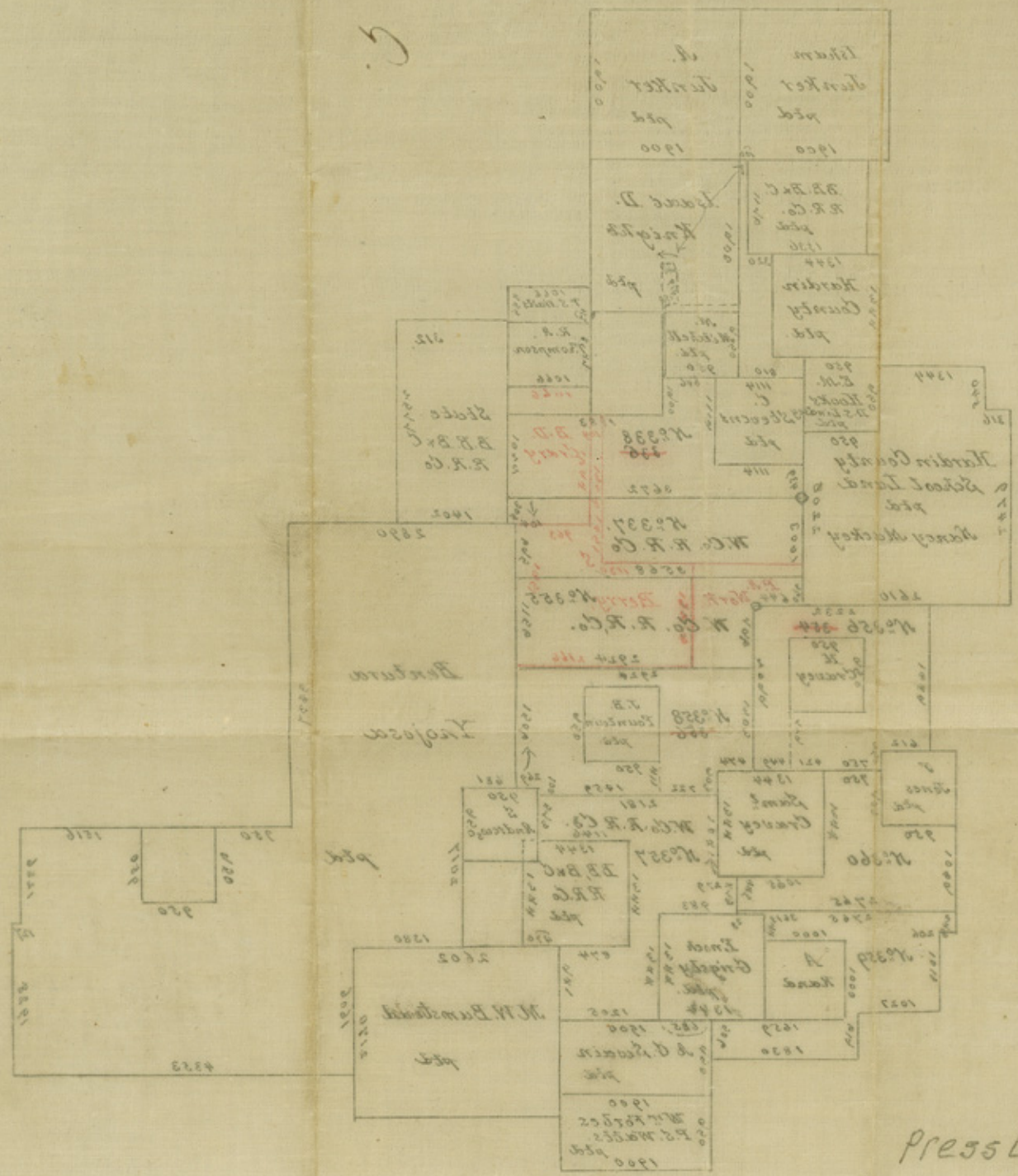
C.



Pressure on 2K

counter 25184

counter 25186



note  
press Lers off. 5K