

41+42

~~29~~

Nashin Co

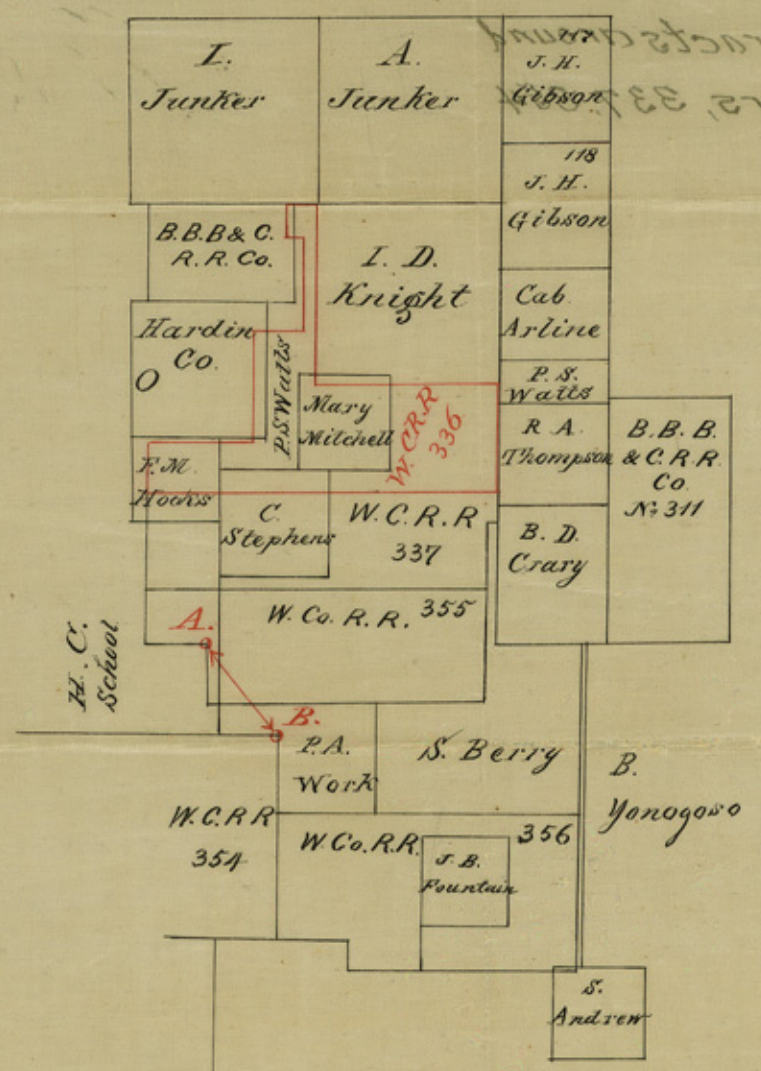
office SKs. of WCRRC Co.
Surs. & adjacent tracts

counter 25188

45-46

45
- 22 -

N
↑



Office of the
W.C.R.R. Co. 217
322 322

Handwritten notes on the right side of the map, including "B. Yanogoso" and other illegible scribbles.

scale 2000 vs. to inch.

09122, 1/2

counter 25189

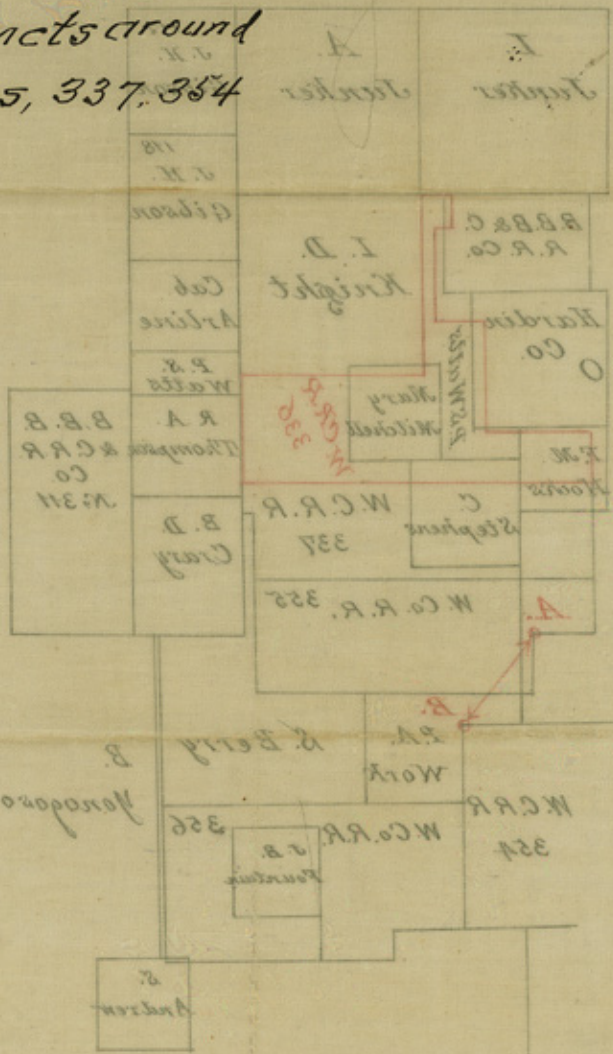
42

42-Hardin.

~~29~~

office sk of tracts around
W.C.R.R Co SURS, 337. 354
355. 356.

Copy of Mrs. Dorris
sketch



C. F. 1000

scale 2000 feet to inch

no date

counter 25189

counter 25190

I. Junker
ptd

A. Junker
ptd

D.

B.B. B & C
R.R. Co
ptd

I. D.
Knight
ptd

Hardin
County
ptd

S.B. Turner
ptd

M.
Mitchell
ptd

312
B.B. B & C
R.R. Co

D. S.
Lindsay
ptd

C
Stevens
ptd

N^o 337
W.C. R.R. Co.
ptd

Hardin Co.
School Land

N^o 338

P.R. Work
N^o 355
W.C. R.R. Co ptd

B. Ynojosa

N^o 356

H.
Cravy

N^o 358
J. B.
Kauntain
ptd.

J
Jones
ptd

Sam^r
Cravy
ptd

N^o 357
W. Co
R.R. Co
ptd

S
Andrews

N^o 360

B.B. B &
C. R.R. Co
ptd

N^o 359
W. Co. R.R.
Co. ptd

A
Hans

Knock
Grigsby
ptd