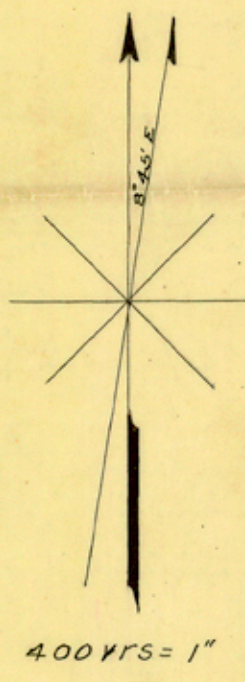
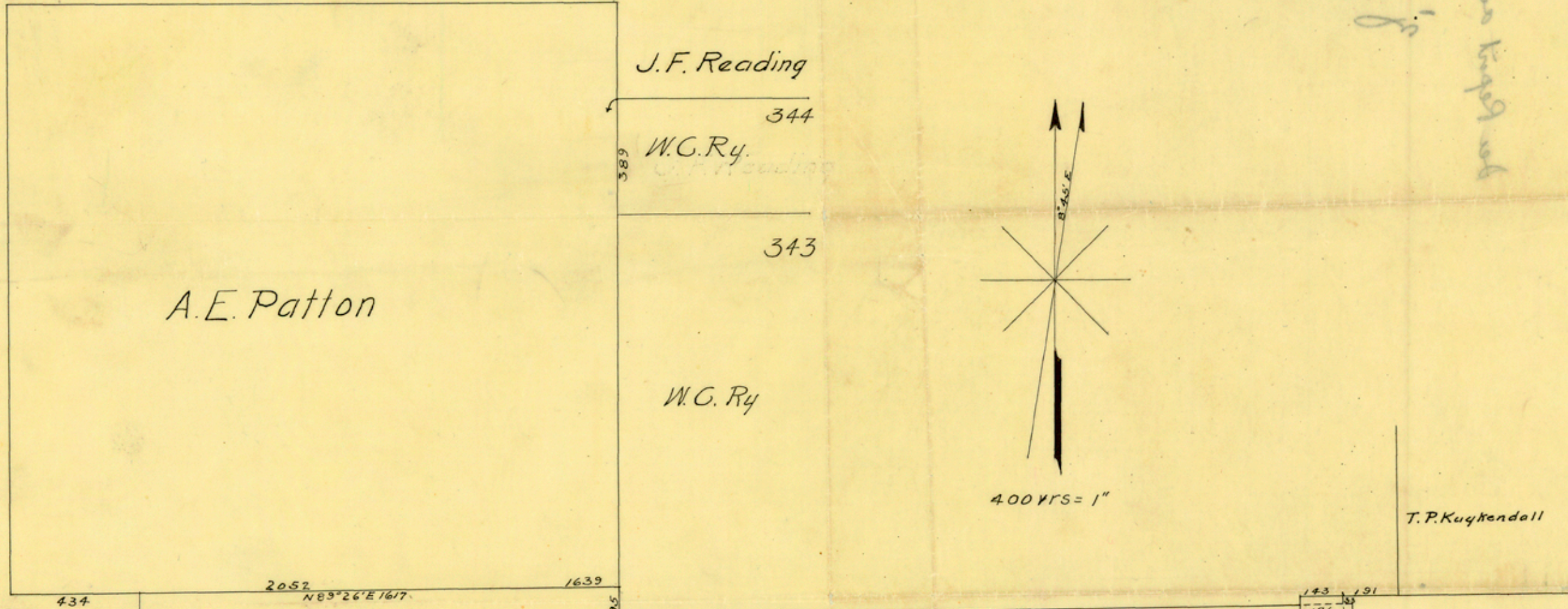


#1  
 2018  
 Hardin Co  
 T.P. Kuykendall  
 8/17/29  
 T.M. Hyle  
 J.T. Robinson  
 Com.  
 County



B.B.B. & C.R.R. Co.

N 1/2 W.C. Ry - 262.2 acres - No. 346  
60759

S 1/2 W.C. Ry - No. 346 - 262.2 acres  
65309

H.C.S. Land

W.C. Ry

W.C. Ry

B.B.B. & C.R.R. Co.

Hardin Co

See accompanying report by  
 T.M. Hyle, filed 8/17/29  
 J.T. Robinson  
 Com.  
 County

Received & filed in Gen. Land Office  
 on 8/17/29  
 Blucher

