

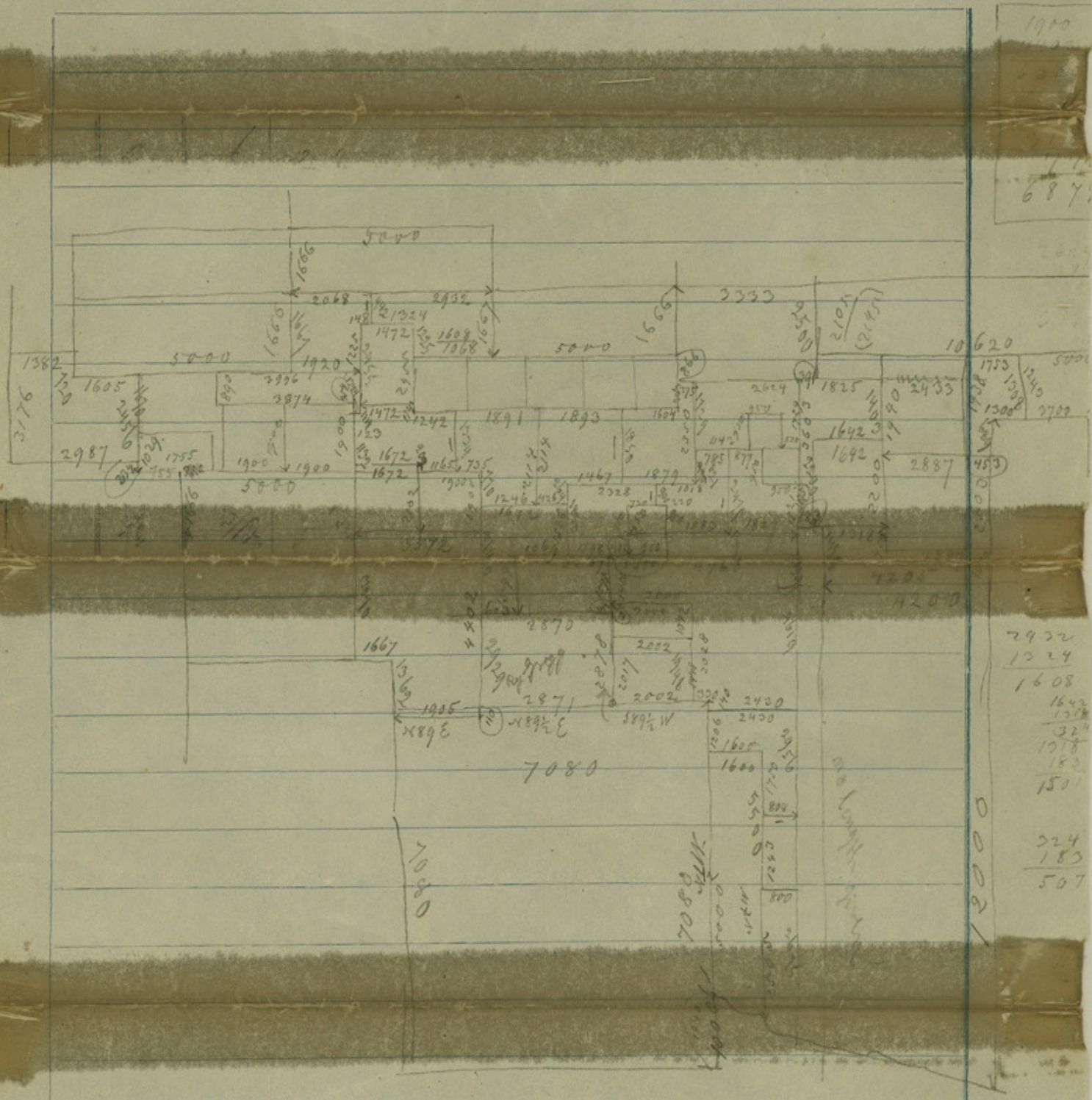
20-20^{de}

Harris Co
office sketches, Surs 6mi
N. of Houston & Fabricius Rey-
nolds,

Counter 25368

1877
1580
950
400
4767

1910
687



2932
1324
1608
1642
1338
324
1018
180
1501

224
183
507

3070
2102
1132
454
<u>6758</u>
3070
1920
6900
648
<u>= 142</u>

2505
1243
1750
5498

1040
5000
1206
140
7386
7080
306

1825
2433
1753
5000
10011
291
10620

1604
1890
1891
1242
6630

Counter 25369

File 20.

Harris County

6 miles North of Houston

plotted in Office Apr. 23/62.

See Surveyor's Statement
in 1.283 d.d. March 27/62.

Counter 25370