

Elizabeth Smith

Milton Yates

Thomas Martin

N.W. prt.
109 1/2 Acres

Henry A. Haase
N.E. part - 160 Acres

J. B. Vinson
366 Acres

G.C. & S.F. Ry Co

John Lenze

W²¹¹/₁₇ Perkins

Richard T. Blackburn

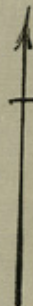
Plat showing subdivisions
of Section No 2, Cert. 5197 G.C. & S.F. Ry Co
HARRIS COUNTY.

General Land Office
3-30-18

Scale: 1 inch = 1000 Vs.

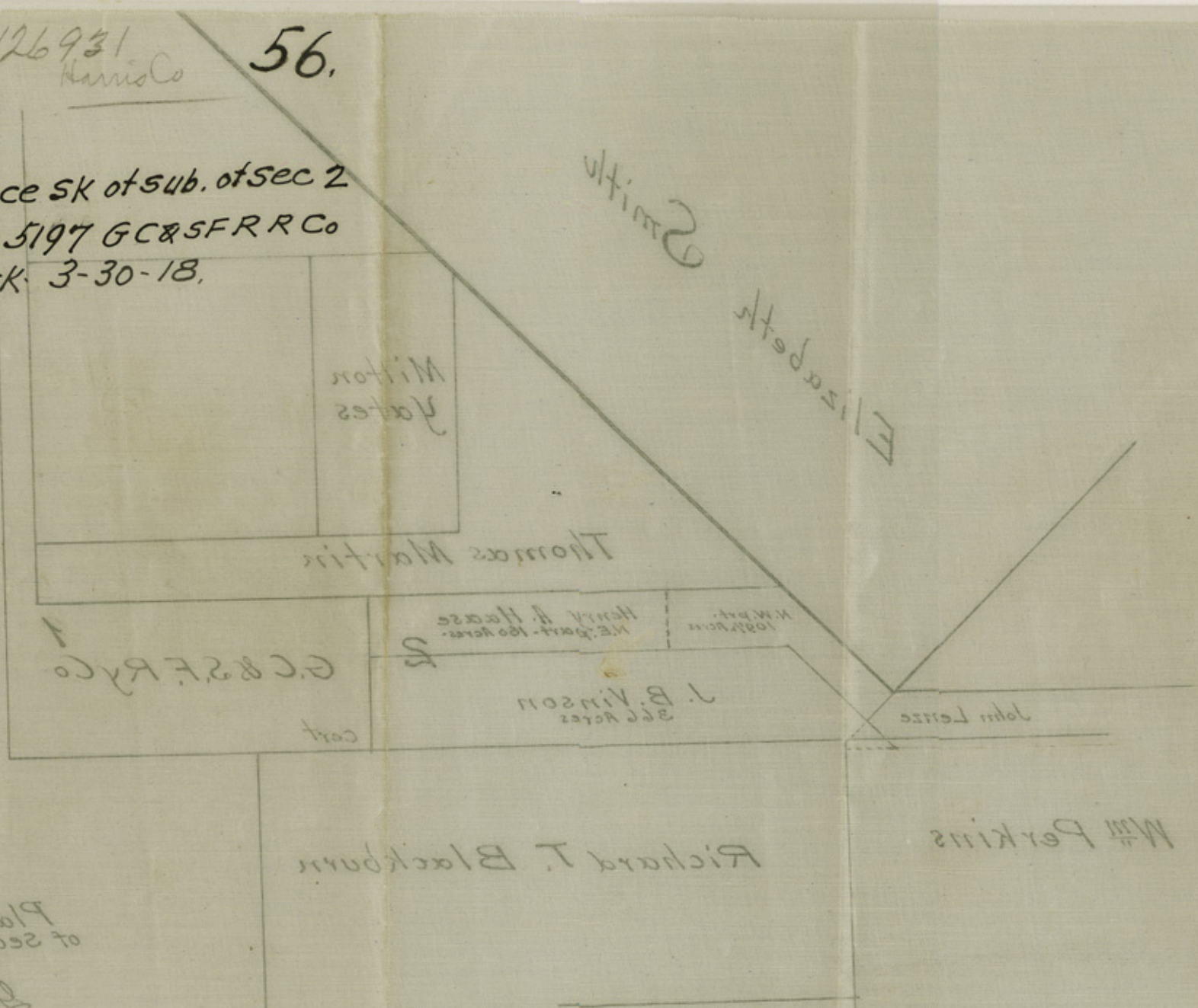
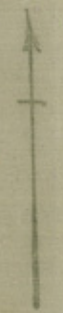
counter 25454

Office of the
Gen'l Land Office
Clark 3-30-18



126931 Harris Co 56.

office SK of sub. of sec 2
cert 5197 GC&SFRR Co
Clark 3-30-18.



Plat showing subdivisions
of section No. 2, cert 5197 GC&SFRR Co.
HARRIS COUNTY.
General Land Office
3-30-18

Scale: 1 inch = 1000 ft.

Count 55455

Count 55455