

SKETCH 56^a
Harris County

Plot and Report by
A. A. Stiles, on
"Goose Creek area"

counter 25456

RESEARCH DIVISION

BENCH WORKS
GOOSE CREEK OIL FIELD
HARRIS COUNTY

From Morgan's Point tide gauge, across Morgan's Channel and Cedar Bayou channel, along spoil banks and Hog Island to the mouth of Goose Creek; thence through Goose Creek Oil Field to Evergreen Point, and return over the same route to the point of beginning.

(a) Bench Mark "M.P." of U. S. Corps of Engineers.

Three-tenths of a mile northwest of United States Army Engineer office at Morgan's Point; 600 feet southeast of Morgan's Point boat landing; on top of spoil bank on west side of Morgan's Channel; top of iron pipe. (Originally set by G. Bagnall in 1890 under the original Morgan's Point triangulation station. Pipe filled with concrete later.)

Elevation above plane of reference, 14,857 feet.

Elevation above mean ("ordinary") high tide, 13,657 feet.

(b) Bench Mark of U. S. Corps of Engineers at Morgan's Point
Tide Gauge.

On West side of Morgan's Channel, northwest of United States Army Engineer office; 6 inches west of reservation fence; top of 2" iron pipe set in concrete about two feet below the ground surface; protected by an outside iron pipe 5" in diameter also set in concrete and extending about 1.5 feet above ground. (Protecting pipe was placed around bench marks when the ground level was raised. This bench mark was established from bench mark "M.P.")

Elevation above plane of reference, 6,448 feet.

Elevation above ordinary high tide, 5,248 feet.

(c) Bench Mark No-1+0 of U.S. Corps of Engineers.

Nine hundred feet northwest of United States Army Engineer office at Morgan's Point; on top of spoil bank on west side of Morgan's Channel; tablet set in concrete.

Elevation above plane of reference, 12,404 feet.

Elevation above ordinary high tide, 11,204 feet.

(d) Bench Mark No-0+5 of U.S. Corps of Engineers.

Three-tenths of a mile northwest of United States Army Engineer office at Morgan's Point; 550 feet southeast of Morgan's Point boat

landing; top of spoil bank on west side of Morgan's Channel; tablet set in concrete.

Elevation above plane of reference, 13.177 feet.

Elevation above ordinary high tide, 11.977 feet.

(c) Bench Mark of U.S. Corps of Engineers.

three-tenths of a mile north of United States Army Engineer office at Morgan's Point; on top of spoil bank on east side of Morgan's ~~Point~~ Channel; tablet set in concrete.

Elevation above plane of reference, 15.549 feet.

Elevation above ordinary high tide, 14.349 feet.

(f) Bench Mark No. O.O of U. S. Corps of Engineers.

Half mile north of United States Army Engineer office at Morgan's Point; about 750 feet northeast of Morgan's Point boat landing; on north edge of Atkinson's Island; tablet set in concrete.

Elevation above plane of reference, 3.858 feet.

Elevation above ordinary high tide, 2.658 feet.

(g) Bench Mark of State Reclamation Department.

Six-tenths of a mile north of United States Army Engineer office; at Morgan's Point; about a quarter of a mile north of Morgan's Point boat landing; on highest point of spoil bank on South end of Hog Island, top of 2-1/2" galvanized iron pipe, 3 inches above ground.

Elevation above plane of reference, 10.920 feet.

Elevation above ordinary ^{high} tide, 9.720 feet.

(h) Bench Mark of State Reclamation Department.

Three feet south of the bench mark (g) described above, and in line with it and the flag pole at the Engineer office at Morgan's Point; top of 2-1/2" galvanized iron pipe 4 inches below ground surface.

Elevation above plane of referance, 10.297 feet.

Elevation above ordinary high tide, ~~10.297~~ feet.

(1) Bench Mark No. ⁹~~9-190~~ of U.S. Corps of Engineers.

Two miles Northwest of Morgan's Point boat landing; 400 feet to left of channel; about 200 feet southeast of big willow tree; tablet set in concrete.

Elevation above plane of referance, 7.440 feet.

Elevation above ordianry high tide, 6.240 feet.

BENCH MARKS SET BY STATE RECLAMATION DEPARTMENT.

Bench Mark 1.

About 400 feet east of Gailliard's cattle pen boat landing; on shell mound in middle of large grove of trees; three galvanized iron nails forming a triangle, driven vertically in base of 10" hackberry tree marked X, three hacks below, about 3 inches above ground surface.

Elevation above plane of reference, 4.294 feet.

Elevation above ordinary high tide, 3.294 feet.

Bench Mark 2.

About 400 feet southeast of Gailliard's cattle pen boat landing; on shell mound about 50 feet northeast of bench mark 1; three galvanized iron nails in a row driven vertically in base of 10" hackberry tree marked X, three hacks below.

Elevation above plane of reference, 4.697 feet.

Elevation above ordinary high tide, 3.497 feet.

Bench Mark 3.

About 750 feet southwest of old Gailliard residence; about 100 feet southeast of big steel oil tank; 75 feet north of edge of swamp; in grove of trees; three galvanized iron nails driven vertically in root of 12" elm tree marked X, three hacks below, about 2 inches above ground.

Elevation above plane of reference, 4.862 feet.

Elevation above ordinary high tide, 3.662 feet.

Bench Mark 4.

At front gate of old Gailliard residence (now used as office of Gulf Refining Company); 3 feet south of yard fence; big galvanized ship spike driven vertically in base of 20" bois d'arc tree, on south side of tree, about 7 inches above ground.

Elevation above plane of reference, 24.126 feet.

Elevation above ordinary high tide, 22.926 feet.

Bench Mark 5.

150 feet west of old Gailliard residence; near southwest corner of fence around Gulf Production Company's sleeping quarters; 110

big galvanized ship spike driven vertically in base of 24" elm tree on southeast side of tree, about 9 inches above ground.

Elevation above plane of reference, 25.015 feet.

Elevation above ordinary high tide, 23.815 feet.

Bench Mark 6.

About 400 feet south of old Gailliard residence: 10-d. nail driven vertically in foundation block at northeast corner of easternmost of four houses (sleeping quarters and eating house) of Gulf Production Company.

Elevation above plane of reference, 21.633 feet.

E Elevation above ordinary high tide, 20.433 feet.

Bench Mark 7.

About 600 feet West of old Tabb residence; 150 feet southeast of cedar tree (dead on east side); 50 feet north of bluff overlooking bay shore; big galvanized ship spike driven vertically in base of 20" walnut tree marked X, three hacks below, on south side of tree, about 7 inches above ground and 8.5 inches below large bolt driven horizontally in tree.

Elevation above plane of reference, 24.395 feet.

Elevation above ordinary high tide, 23.195 feet.

Bench Mark 8.

About 900 feet northeast of old Gailliard residence; about 350 feet east of big oil tank; 150 feet northeast of new boiler house; 10-d. galvanized iron nail in highest top edge of 15" red oak stump marked X. three hacks below.

Elevation above plane of reference, 25.168 feet.

Elevation above ordinary high tide, 23.968 feet.

Bench Mark 9.

About 750 feet northeast of old Gailliard residence; cross mark (X) in northwest ^{corner} edge of concrete foundation of smoke stack of new boiler house; about a foot 9 inches above ground, and 10 inches east of west edge and 11 inches south of north edge of concrete foundation.

Elevation above plane of reference, 24.715 feet.

Elevation above ordinary high tide, 23.515 feet.

Bench Mark 10.

About 550 feet northeast of old Gailliard residence; about 250 feet southwest of new boiler house; 50 feet north of derrick and well; big galvanized ship spike driven vertically in root of 30" red oak tree marked X, three hacks below, 6 inches above ground.

Elevation above plane of reference, 24.535 feet.

Elevation above ordinary high tide, 23.335 feet.

Bench Mark 11.

In front of old Tabb residence; 12 feet south of front steps; on bluff on north side of Tabb's Bay; big galvanized ship spike driven horizontally on south side of 18" cedar tree; about 2 inches above ground.

Elevation above plane of reference, 22.441 feet.

Elevation above ordinary high tide, 21.241 feet.

Bench Mark 12.

About 60 feet west of Mrs Wright's residence; 35 feet West of fence; about 8 feet south of a grave; big ship spike driven vertically in base of 26" post oak, on South side of tree, 6 inches above ground (top of spike head is about half an inch above surface of bark)

Elevation above plane of reference, 25.167 feet.

Elevation above ordinary high tide, 23.867 feet.

Bench Mark 13.

About 700 feet southeast of Mrs. Wright's residence, about 100 feet northeast of bluff overlooking swamp and bay; 30 feet southwest of producing well; galvanized ship spike driven vertically in west root of 16" red oak tree marked X, three hacks below, about 7 inches above ground.

Elevation above plane of reference, 23.682 feet.

Elevation above high tide(ordinary) 22.482 feet.

Bench Mark 14.

About a quarter of a mile southeast of Mrs. Wrights residence; about 100 feet southwest of bluff overlooking swamp and bay; 60-d. galvanized iron nail driven vertically in root of 24" red oak tree marked X, three hacks below, on west side, 3 inches above ground.

Elevation above plane of reference, 7.502 feet.

Elevation above ordinary high tide, 6.302 feet.

Bench Mark 15.

About half a mile southeast of Mrs Wright's residence; on Evergreen Point; 10-d. galvanized iron nail driven vertically in north root of old 14" cedar tree marked X, three hacks below; 1 foot above ground.

Elevation above plane of reference, 6.518 feet.

Elevation above ordinary high tide, 5.318 feet.

Bench Mark 16.

About half a mile southeast of Mrs. Wrights residence; on west side of Evergreen Point; big galvanized ^{ship spike} driven vertically in top of bent place in 5" scrub elm tree marked X, three hacks below; spike 1 foot above ground.

Elevation above plane of reference, 7.755 feet.

Elevation above ordinary high tide, 6.555 feet.

Bench Mark 17.

About half a mile southeast of Mrs. Wright's residence; on north side of Evergreen Point; big galvanized ship spike driven vertically, about 1 foot above ground, in south root of 8" elm tree marked X, three hacks below.

Elevation above plane of reference, 7.251 feet.

Elevation above ordinary high tide, 6.051 feet.

Bench Mark 18.

About a quarter of a mile south of Mrs Wright's residence; at southeast side of shell reef at Mrs Wright's boat landing; about 30 feet from water's edge; 8-d. nail driven vertically in north root of 10" blazed cedar tree, about 5 inches above ground. (This bench mark was previously established by some other surveyor.)

Elevation above plane of reference, 5.539 feet.

Elevation above ordinary high tide, 4.339 feet.

Bench Mark 19.

About a quarter of a miles south of Mrs Wright's residence; on shell reef at Mrs Wrights boat landing; 20 feet west of bench mark 18; two galvanized iron ship spikes (one spike bent over)

about 3 inches above ground in West base of 6" elm tree marked X,
three hacks below.

Elevation above plane of reference, 4.853 feet.

Elevation above ordinary high tide, 3.653 feet.

Bench Mark 20.

About a quarter of a mile south of Mrs Wright's residence on
north side of shell reef at Mrs Wrights boat landing; big galvan-
ized iron ship spike driven vertically, about 2 inches above ground,
into South base of 8" elm tree marked X, three hacks below. (There
is another spike driven horizontally and bent over, 4 inches above
the one used as bench mark.

Elevation above plane of reference, 4.596 feet.

Elevation above ordinary high tide, 3.396 feet.

Sketch File 56^a Harris Co.

Description and Elevation

of Bench Marks used &
established in Goose Creek

Oil Field Harris Co. Texas,

by A.A. Stiles, State Recla-
mation Engineer.

Filed August 22, 1917.

J. T. Robison,

Com'r.

Leo Ehlinger,

File Clerk.

about 3 inches above ground in west base of 6" elm tree marked X,
three inches below.

Elevation above plane of reference, 4.333 feet.

Elevation above ordinary high tide, 3.333 feet.

Bench Mark 50.

No other bench marks were found in the vicinity of the above mentioned points. The only other bench mark found was a nail in a fence post about 3 inches above ground, (there were three inches below, and three inches above) and bent over, 4 inches above ordinary high tide, and 3.333 feet above plane of reference.

87

counter 25464

BENCH WORKS
GOOSE CREEK OIL FIELD
HARRIS COUNTY

From Morgan's Point tide gauge, across Morgan's Channel and Cedar Bayou channel, along spoil banks and Hog Island to the mouth of Goose Creek; thence through Goose Creek Oil Field to Evergreen Point, and return over the same route to the point of beginning.

(a) Bench Mark "M.P." of U. S. Corps of Engineers.

Three-tenths of a mile northwest of United States Army Engineer office at Morgan's Point; 600 feet southeast of Morgan's Point boat landing; on top of spoil bank on west side of Morgan's Channel; top of iron pipe. (Originally set by G. Bagnall in 1890 under the original Morgan's Point triangulation station. Pipe filled with concrete later.)

Elevation above plane of reference, 14,857 feet.

Elevation above mean ("ordinary") high tide, 10,907 feet.

(b) Bench Mark of U. S. Corps of Engineers at Morgan's Point
Tide Gauge.

On West side of Morgan's Channel, northwest of United States Army Engineer office; 6 inches west of reservation fence; top of 2" iron pipe set in concrete about two feet below the ground surface; protected by an outside iron pipe 5" in diameter also set in concrete and extending about 1.5 feet above ground. (Protecting pipe was placed around bench marks when the ground level was raised. This bench mark was established from bench mark "M.P.")

Elevation above plane of reference, 6,448 feet.

Elevation above ordinary high tide, 5,248 feet.

(c) Bench Mark No-1+0 of U.S. Corps of Engineers.

Nine hundred feet northwest of United States Army Engineer office at Morgan's Point; on top of spoil bank on west side of Morgan's Channel; tablet set in concrete.

Elevation above plane of reference, 12,404 feet.

Elevation above ordinary high tide, 11,204 feet.

(d) Bench Mark No-0+5 of U.S. Corps of Engineers.

Three-tenths of a mile northwest of United States Army Engineer office at Morgan's Point; 550 feet southeast of Morgan's Point boat

landing; top of spoil bank on west side of Morgan's Channel; tablet set in concrete.

Elevation above plane of reference, 13.177 feet.

Elevation above ordinary high tide, 11.977 feet.

(c) Bench Mark of U.S. Corps of Engineers.

three-tenths of a mile north of United States Army Engineer office at Morgan's Point; on top of spoil bank on east side of Morgan's ~~Point~~ Channel; tablet set in concrete.

Elevation above plane of reference, 15.549 feet.

Elevation above ordinary high tide, 14.349 feet.

(f) Bench Mark No. O.O of U. S. Corps of Engineers.

Half mile north of United States Army Engineer office at Morgan's Point; about 750 feet northeast of Morgan's Point boat landing; on north edge of Atkinson's Island; tablet set in concrete.

Elevation above plane of reference, 3.858 feet.

Elevation above ordinary high tide, 2.658 feet.

(g) Bench Mark of State Reclamation Department.

Six-tenths of a mile north of United States Army Engineer office; at Morgan's Point; about a quarter of a mile north of Morgan's Point boat landing; on highest point of spoil bank on South end of Hog Island, top of 2-1/2" galvanized iron pipe, 3 inches above ground.

Elevation above plane of reference, 10.920 feet.

Elevation above ordinary ^{high} tide, 9.720 feet

(h) Bench Mark of State Reclamation Department.

Three feet south of the bench mark (g) described above, and in line with it and the flag pole at the Engineer office at Morgan's Point; top of 2-1/2" galvanized iron pipe 4 inches below ground surface.

Elevation above plane of reference, 10.297 feet.

Elevation above ordinary high tide, ~~10.297~~ ^{9.097} feet.

(i) Bench Mark No. ~~9~~⁹190 of U.S. Corps of Engineers.

Two miles Northwest of Morgan's Point boat landing; 400 feet to left of channel; about 200 feet southeast of big willow tree; tablet set in concrete.

Elevation above plane of reference, 7.440 feet.

Elevation above ordinary high tide, 6.240 feet.

r1

BENCH MARK SET BY STATE RECLAMATION DEPARTMENT.

Bench Mark 1.

About 400 feet east of Gailliard's cattle pen boat landing; on shell mound in middle of large grove of trees; three galvanized iron nails forming a triangle, driven vertically in base of 10" hackberry tree marked X, three hacks below, about 3 inches above ground surface.

Elevation above plane of reference, 4.294 feet.

Elevation above ordinary high tide, 3.294 feet.

Bench Mark 2.

About 400 feet southeast of Gailliard's cattle pen boat landing; on shell mound about 50 feet northeast of bench mark 1; three galvanized iron nails in a row driven vertically in base of 10" hackberry tree marked X, three hacks below.

Elevation above plane of reference, 4.697 feet.

Elevation above ordinary high tide, 3.497 feet.

Bench Mark 3.

About 750 feet southwest of old Gailliard residence; about 100 feet southeast of big steel oil tank; 75 feet north of edge of swamp; in grove of trees; three galvanized iron nails driven vertically in root of 12" elm tree marked X, three hacks below, about 2 inches above ground.

Elevation above plane of reference, 4.862 feet.

Elevation above ordinary high tide, 3.662 feet.

Bench Mark 4.

At front gate of old Gailliard residence (now used as office of Gulf Refining Company); 3 feet south of yard fence; big galvanized ship spike driven vertically in base of 20" bois d'arc tree, on south side of tree, about 7 inches above ground.

Elevation above plane of reference, 24.126 feet.

Elevation above ordinary high tide, 22.926 feet.

Bench Mark 5.

150 feet west of old Gailliard residence; near southwest corner of fence around Gulf Production Company's sleeping quarters;

big galvanized ship spike driven vertically in base of 24" elm tree on southeast side of tree, about 9 inches above ground.

Elevation above plane of reference, 25.015 feet.

Elevation above ordinary high tide, 23.815 feet.

Bench Mark 6.

About 400 feet south of old Gailliard residence; 10-d. nail driven vertically in foundation block at northeast corner of easternmost of four houses (sleeping quarters and eating house) of Gulf Production Company.

Elevation above plane of reference, 21.633 feet.

E Elevation above ordinary high tide, 20.433 feet.

Bench Mark 7.

About 600 feet West of old Tabb residence; 150 feet southeast of cedar tree (dead on east side); 50 feet north of bluff overlooking bay shore; big galvanized ship spike driven vertically in base of 20" walnut tree marked X, three hacks below, on south side of tree, about 7 inches above ground and 8.5 inches below large bolt driven horizontally in tree.

Elevation above plane of reference, 24.395 feet.

Elevation above ordinary high tide, 23.195 feet.

Bench Mark 8.

About 900 feet northeast of old Gailliard residence; about 350 feet east of big oil tank; 150 feet northeast of new boiler house; 10-d. galvanized iron nail in highest top edge of 15" red oak stump marked X. three hacks below.

Elevation above plane of reference, 25.168 feet.

Elevation above ordinary high tide, 23.968 feet.

Bench Mark 9.

About 750 feet northeast of old Gailliard residence; cross mark (X) in northwest ^{corner} edge of concrete foundation of smoke stack of new boiler house; about 8 feet 9 inches above ground, and 10 inches east of west edge and 11 inches south of north edge of concrete foundation.

Elevation above plane of reference, 24.715 feet.

Elevation above ordinary high tide, 23.515 feet.

Bench Mark 10.

About 550 feet northeast of old Gailliard residence; about 250 feet southwest of new boiler house; 50 feet north of derrick and well; big galvanized ship spike driven vertically in root of 30" red oak tree marked X, three hacks below, 6 inches above ground.

Elevation above plane of reference, 24.555 feet.

Elevation above ordinary high tide, 23.335 feet.

Bench Mark 11.

In front of old Tabb residence; 12 feet south of front steps; on bluff on north side of Tabb's Bay; big galvanized ship spike driven horizontally on south side of 18" cedar tree; about 2 inches above ground.

Elevation above plane of reference, 22.441 feet.

Elevation above ordinary high tide, 21.241 feet.

Bench Mark 12.

About 60 feet west of Mrs Wright's residence; 35 feet West of fence; about 8 feet south of a grave; big ship spike driven vertically in base of 26" post oak, on South side of tree, 6 inches above ground (top of spike head is about half an inch above surface of bark)

Elevation above place of reference, 25.167 feet.

Elevation above ordinary high tide, 23.967 feet.

Bench Mark 13.

About 700 feet southeast of Mrs. Wright's residence, about 100 feet northeast of bluff overlooking swamp and bay; 30 feet southwest of producing well; galvanized ship spike driven vertically in west root of 16" red oak tree marked X, three hacks below, about 7 inches above ground.

Elevation above plane of reference, 23.682 feet.

Elevation above high tide (ordinary) 22.482 feet.

Bench Mark 14.

About a quarter of a mile southeast of Mrs. Wright's residence; about 100 feet southwest of bluff overlooking swamp and bay; 60-d. galvanized iron nail driven vertically in root of 24" red oak tree marked X, three hacks below, on west side, 3 inches above ground.

Elevation above plane of reference, 7.502 feet.

Elevation above ordinary high tide, 6.302 feet.

Bench Mark 15.

About half a mile southeast of Mrs Wright's residence; on Evergreen Point; 10-d. galvanized iron nail driven vertically in north root of old 14" cedar tree marked X, three hacks below; 1 foot above ground.

Elevation above plane of reference, 6.518 feet.

Elevation above ordinary high tide, 5.318 feet.

Bench Mark 16.

About half a mile southeast of Mrs. Wrights residence; on west side of Evergreen Point; big galvanized ^{ship spike} driven vertically in top of bent place in 5" scrub elm tree marked X, three hacks below; spike 1 foot above ground.

Elevation above plane of reference, 7.755 feet.

Elevation above ordinary high tide, 6.555 feet.

Bench Mark 17.

About half a mile southeast of Mrs. Wright's residence; on north side of Evergreen Point; big galvanized ship spike driven vertically, about 1 foot above ground, in south root of 8" elm tree marked X, three hacks below.

Elevation above plane of reference, 7.251 feet.

Elevation above ordinary high tide, 6.051 feet.

Bench Mark 18.

About a quarter of a mile south of Mrs Wright's residence; at southeast side of shell reef at Mrs Wright's boat landing; about east 50 feet from water's edge; 8-d. nail driven vertically in north root of 10" blazed cedar tree, about 5 inches above ground. (This bench mark was previously established by some other surveyor.)

Elevation above plane of reference, 5.539 feet.

Elevation above ordinary high tide, 4.339 feet.

Bench Mark 19.

About a quarter of a miles south of Mrs Wright's residence; on shell reef at Mrs Wrights boat landing; 20 feet west of bench mark 18; two galvanized iron ship spikes (one spike bent over)

about 3 inches above ground in West base of 6" elm tree marked X,
three hacks below.

Elevation above plane of reference, 4.853 feet.

Elevation above ordinary high tide, 3.653 feet.

Bench Mark 20.

About a quarter of a mile south of Mrs Wright's residence on
north side of shell reef at Mrs Wrights boat landing; big galvan-
ized iron ship spike driven vertically, about 2 inches above ground,
into South base of 8" elm tree marked X, three hacks below. (There
is another spike driven horizontally and bent over, 4 inches above
the one used as bench mark.

Elevation above plane of reference, 4.596 feet.

Elevation above ordinary high tide, 3.396 feet.

56a
Sketch File 6 "Harris Co."

Description and Elevation
of Bench Marks used &
established in Goose Creek
Oil Field Harris Co. Texas,
by A.A. Stiles, State Recla-
mation Engineer.

Filed August 22, 1917.

J. T. Robison,

Com'r.

Leo Ehlinger,

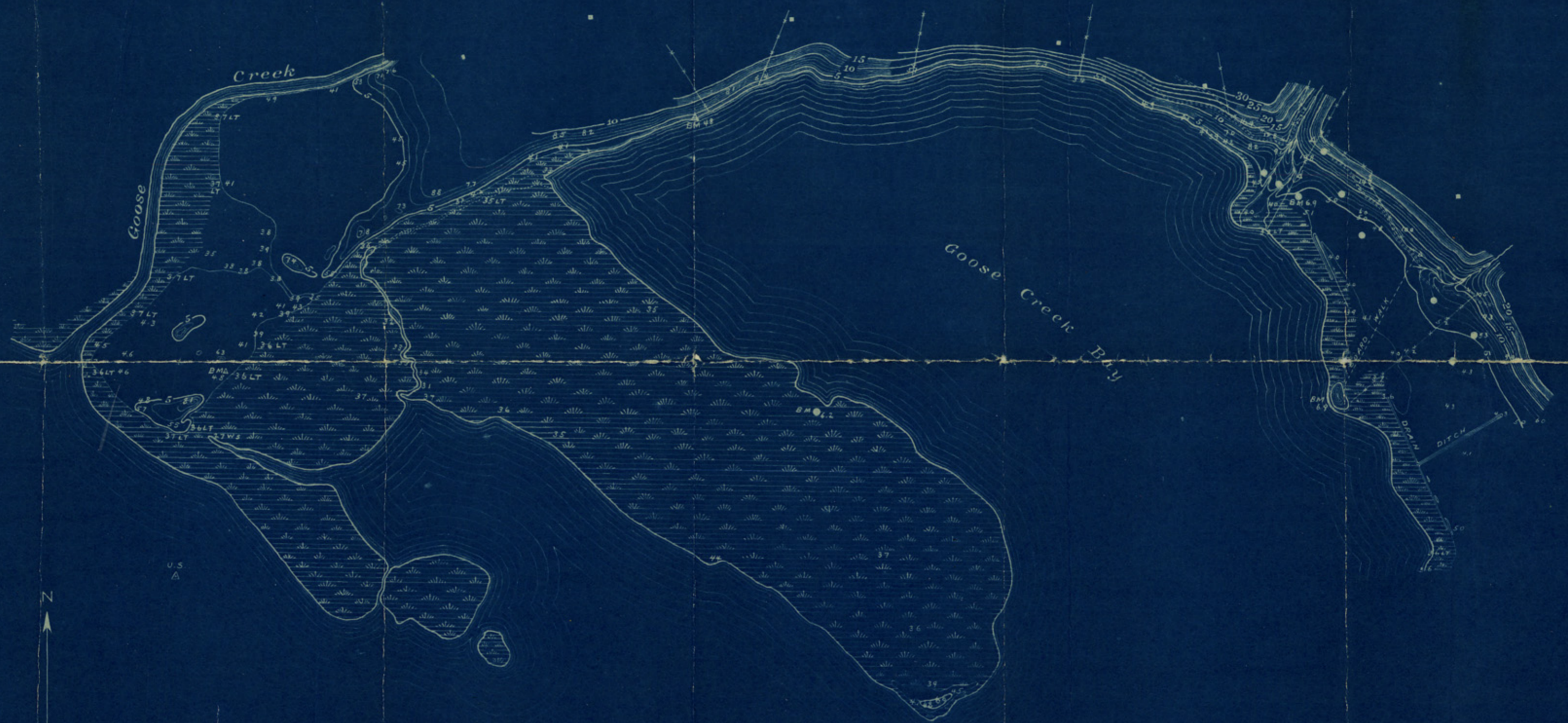
File Clerk.

counter 25972

1922

7

TOPOGRAPHIC MAP OF
GOOSE CREEK OIL FIELD
SAN JACINTO BAY
HARRIS COUNTY
TEXAS



Surveyed and mapped by
Arthur A. Shiles, May 1912
Plane Table and Stadia
method.

*Field note 23rd p. 5. At the latter part of
May 1912 at which time the actual relief
in the lower part of the field was noted.*

Scale: 1 inch = 400 feet



Contour interval 1 foot

LEGEND

- Oil Well Derricks
- Fences
- Houses
- Roads
- △ Triangulation Signals
- BM Benchmarks
- 77 43 etc Elevations
- Contours
- Salt Marsh
- Water Lines

See Rld. St. 41, Harris Co.