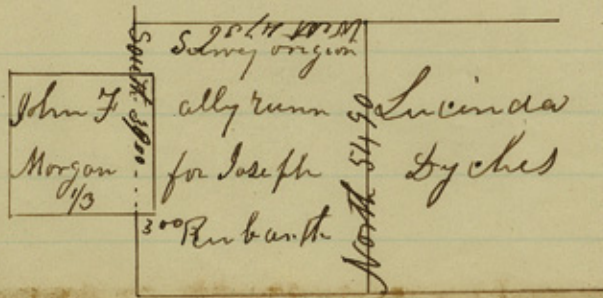


N



J. W^m Armstrong a Deputy Surveyor for Cooke Land District do hereby Certify that I Run a Connecting line from the N W. Corner of a Survey in the name of Lucinda Dyches on the waters of Paint Creek West 4736 varas to the corner of a Survey Originally made for Joseph Rubbarth then run South with said Rubbarth's West line 3900 varas then East 300 varas to a large rock mound on the South Side of a branch said mound is the South East corner of a Survey of 3 Leagues made for John F Morgan Making the Connection as I Conflict with said Rubbarth as represented in the above Sketch Given under my hand this 2nd day of July 1856

J. W^m Armstrong
A Deputy Surveyor
for Cooke Land Dist

File 5. $\frac{27}{4} 5$

Haskell Co,

S. E. part of said Co.
on Oley's Cr.

W^m Armstrongs SK in SE part
of Haskell Co,

Dated July 2, 1856.

174
3 16 5 4
21

Dated 7/2/56

counter 26125