

E. N. PATTON OIL COMPANY, INC.

P.O. BOX 296 • ABILENE, TEXAS 79604 • (915) 672-8517

December 2, 1992

Mr. Matt Edling
General Land Office
Petroleum and Minerals Division
Room 630
Stephen F. Austin State Office Building
1700 North Congress Avenue
Austin, Texas 78701

RECEIVED
LEGAL SERVICES

AM DEC 3 1992 PM
7 8 9 10 11 12 1 2 3 4 5 6

Dear Mr. Edling:

RE: RIVER TRACT ACREAGE
MGL NO. 19 - HASKELL CO.
OCTOBER 6, 1992 LEASE SALE

Further to our telephone conversation of November 30, 1992 I am enclosing supporting documentation for the above.

On May 14 I nominated (copy enclosed) a portion of the Double Mountain Fork of the Brazos River (note the plats show no survey on the west side of the river). On May 19 the GLO acknowledged the nomination (copy enclosed). I later received the Notice for Bids (copy enclosed). The Notice showed 70 acres (+ or -). I later bid on the tract and was successful for \$18,060.00 (excluding fees), which amounts to \$258/acre (copy of bid and checks enclosed). I was notified by phone and later by mail (copy enclosed) of the successful bid. I later received and recorded the lease (copy with cover letter enclosed).

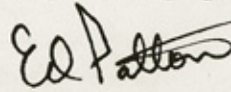
In anticipation of drilling under the river, I had the tract surveyed (gradient boundary) by Mr. Cody Owen a Registered Public Land Surveyor and Licensed State Land Surveyor. His survey shows the tract having 29.98 acres (a survey plat with a photocopy of the legal description is enclosed).

Since the tract is 40.02 acres less than the 70 estimated and thus in excess of 100% in error, I ask your assistance in obtaining a refund for the overpayment exceeding the 29.98 acres.

Thank you for your consideration in this matter.

File No. Sketch File 26
Haskell County
River Bed Acreage

Very truly yours,



ED PATTON

EP:sp

Enclosures

DEDLI2D2.DAY

Filed

Jan. 15

19 93

GARRY MAURO, Com'r

By

Douglas Howard

Filed For Information Only

county 26182

OWEN SURVEYING COMPANY

P. O. BOX 336

BRECKENRIDGE, TEXAS 76024-0336

CODY OWEN

PHONE
817-559-9898

L E G A L D E S C R I P T I O N

A 29.98 acre tract of land being all of the Double Mountain Fork of the Brazos River lying north of the abandon Stanford and Northwestern Railroad and south of the projected north line of the George W. Lang Survey N0.37, A-306 in Stonewall County, Texas and being further described by metes and bounds as follows:

Beginning at a 1/2" steel pin set on the east bank of the said Brazos river and being South 89 degrees 21 minutes 38 seconds West a distance of 3823.54 feet from a 1/2" steel pin set for the northeast corner of the said Lang Survey.

THENCE North 89 degrees 21 minutes 38 seconds West for a distance of 266.17 feet with the projected north line of the said Lang Survey to a 1/2" steel pin set on the west bank of the said river.

THENCE southerly with the meanders of the said west bank to 1/2" steel pins set as follows: South 55 degrees 27 minutes 31 seconds West for a distance of 27.06 feet; South 52 degrees 28 minutes 16 seconds West for a distance of 520.97 feet; South 59 degrees 04 minutes 07 seconds West for a distance of 310.47 feet; South 53 degrees 14 minutes 01 seconds West for a distance of 474.73 feet; South 45 degrees 47 minutes 41 seconds West for a distance of 526.18 feet; South 46 degrees 04 minutes 04 seconds West for a distance of 843.19 feet; South 30 degrees 21 minutes 48 seconds West for a distance of 241.17 feet; South 22 degrees 32 minutes 32 seconds West for a distance of 975.78 feet; South 21 degrees 21 minutes 58 seconds West for a distance of 722.08 feet; South 15 degrees 24 minutes 20 seconds West for a distance of 606.14 feet; South 02 degrees 39 minutes 14 seconds West for a distance of 267.64 feet; South 00 degrees 04 minutes 06 seconds East for a distance of 452.42; South 04 degrees 02 minutes 40 seconds West for a distance of 654.45 feet; South 11 degrees 09 minutes 36 seconds West for a distance of 306.65 feet; South 30 degrees 29 minutes 48 seconds West for a distance of 434.12 feet; South 21 degrees 50 minutes 33 seconds West for a distance of 194.85 feet; South 30 degrees 35 minutes 08 seconds West for a distance of 474.12 feet to a 1/2" steel pin set at the intersection of the west bank of the said river and the center of the said railroad.

THENCE South 59 degrees 11 minutes 18 seconds East for a distance of 191.18 feet with the said railroad to a 1/2" steel pin set on the east bank of the said river.

counter 26183

THENCE northerly with the meanders of the east bank of the said river as follows: North 21 degrees 38 minutes 06 seconds East for a distance of 86.67 feet to a 1/2" steel pin found; North 39 degrees 12 minutes 01 seconds East for a distance of 249.67 feet to a 1/2" steel pin set; North 25 degrees 43 minutes 58 seconds East for a distance of 481.42 feet to a 1/2" steel pin set; North 13 degrees 40 minutes 42 seconds East for a distance of 270.46 feet to a 1/2" steel pin found; North 10 degrees 01 minutes 35 seconds East for a distance of 562.46 feet to a 1/2" steel pin found; North 10 degrees 59 minutes 20 seconds East for a distance of 422.48 feet to a 1/2" steel pin set; North 01 degrees 55 minutes 20 seconds West for a distance of 227.41 feet to a 1/2" steel pin set; North 05 degrees 20 minutes 37 seconds East for a distance of 687.11 feet to a 1/2" steel pin set; North 16 degrees 55 minutes 43 seconds East for a distance of 570.67 feet to a 1/2" steel pin set; North 00 degrees 27 minutes 55 seconds West for a distance of 113.05 feet to a 1/2" steel pin found; North 21 degrees 14 minutes 01 seconds East for a distance of 192.32 feet to a 1/2" steel pin found; North 27 degrees 23 minutes 45 seconds East for a distance of 563.51 feet to a 1/2" steel pin set; North 03 degrees 20 minutes 53 seconds East for a distance of 114.51 feet to a 1/2" steel pin set; North 28 degrees 08 minutes 42 seconds East for a distance of 259.31 feet to a 1/2" steel pin set; North 21 degrees 59 minutes 07 seconds East for a distance of 412.70 feet to a 1/2" steel pin set; North 33 degrees 35 minutes 15 seconds East for a distance of 191.36 feet to a 1/2" steel pin set; North 46 degrees 41 minutes 49 seconds East for a distance of 844.14 feet to a 1/2" steel pin set; North 50 degrees 17 minutes 42 seconds East for a distance of 824.33 feet to a 1/2" steel pin set; North 54 degrees 05 minutes 04 seconds East for distance of 293.89 feet to a 1/2" steel pin set; North 61 degrees 41 minutes 53 seconds East for a distance of 198.69 feet to a 1/2" steel pin set; North 52 degrees 34 minutes 39 seconds East for a distance of 359.55 feet to a 1/2" steel pin set; North 48 degrees 17 minutes 50 seconds East for a distance of 113.82 feet to a 1/2" steel pin set; North 56 degrees 02 minutes 37 seconds East for a distance of 152.92 feet to the place of beginning.

The bearings are based on astronomic north.
Dated this the 28th day of November, 1992.

Certified Correct

Cody Owen

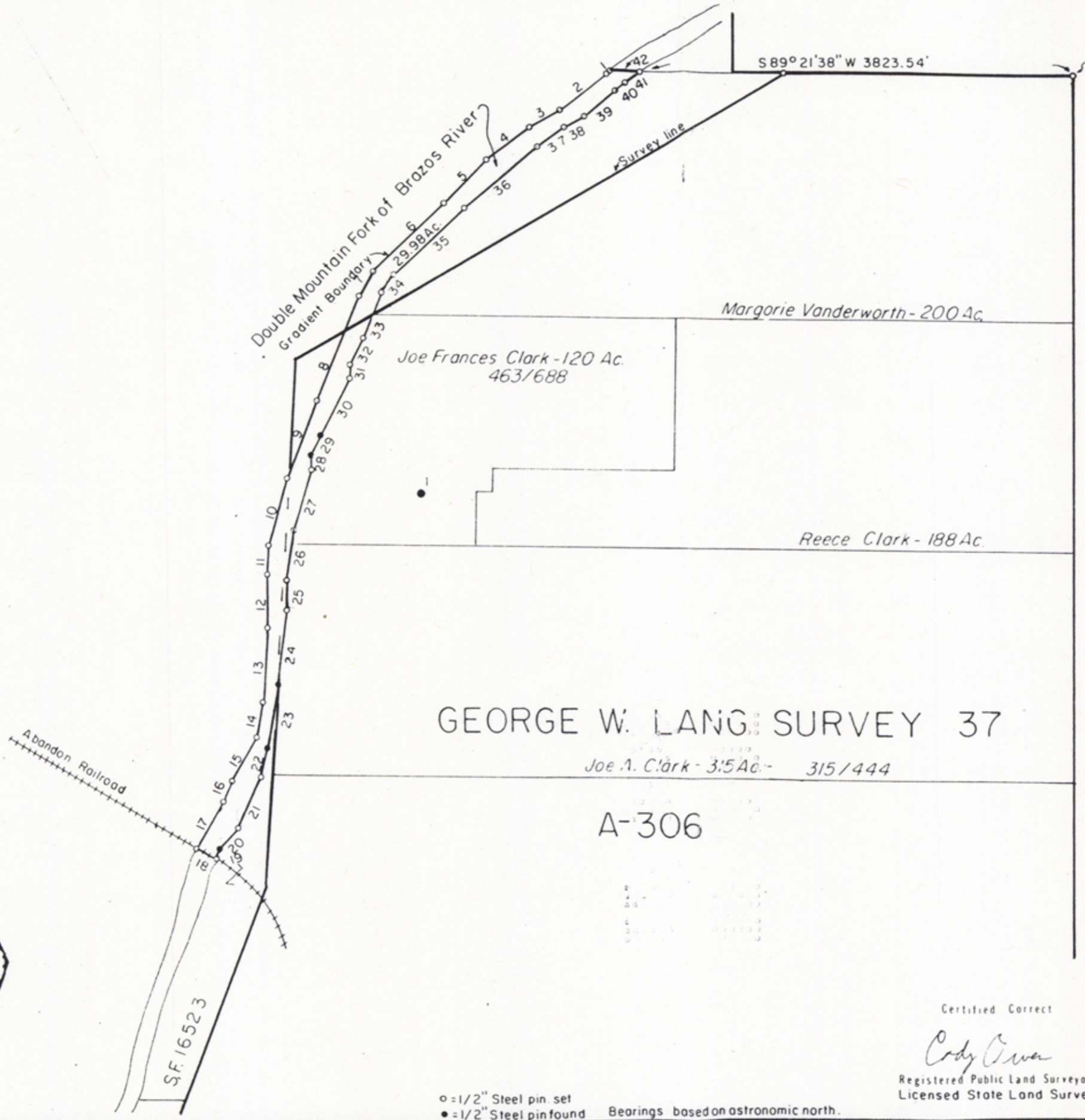
Registered Professional Land Surveyor



counter 26189

- 1 S55°27'31" W 27.06'
- 2 S52°28'16" W 520.97'
- 3 S59°04'07" W 310.47'
- 4 S53°14'01" W 474.73'
- 5 S45°47'41" W 526.18'
- 6 S46°04'04" W 843.19'
- 7 S30°21'48" W 241.17'
- 8 S22°32'32" W 975.78'
- 9 S21°21'58" W 722.08'
- 10 S15°24'20" W 606.14'
- 11 S02°39'14" W 267.64'
- 12 S00°04'06" E 452.42'
- 13 S04°02'40" W 654.45'
- 14 S11°09'36" W 306.65'
- 15 S30°29'48" W 434.12'
- 16 S21°50'33" W 194.85'
- 17 S30°35'08" W 474.12'
- 18 S59°11'18" E 191.18'
- 19 N21°38'06" E 86.67'
- 20 N39°12'01" E 249.67'
- 21 N25°43'58" E 481.42'
- 22 N13°40'42" E 270.46'
- 23 N10°01'35" E 562.46'
- 24 N10°59'20" E 422.48'
- 25 N01°55'20" W 227.41'
- 26 N05°20'37" E 687.11'
- 27 N16°55'43" E 570.67'
- 28 N00°27'55" W 113.05'
- 29 N21°14'01" E 192.32'
- 30 N27°23'45" E 563.51'
- 31 N03°20'53" E 114.51'
- 32 N28°08'42" E 259.31'
- 33 N21°59'07" E 412.70'
- 34 N33°35'15" E 191.36'
- 35 N46°41'49" E 844.14'
- 36 N50°17'42" E 824.33'
- 37 N54°05'04" E 293.89'
- 38 N61°41'53" E 198.69'
- 39 N52°34'39" E 359.55'
- 40 N48°17'50" E 113.82'
- 41 N56°02'37" E 152.92'
- 42 N89°21'38" W 266.17'

29.98 Acres in river



1/2" Steel pin set for northeast corner of G.W. Lang Survey



File No. Sketch File 26
Haskell County
 River Bed Acreage _____
 Filed Jan. 15 19 93
 By GARRY MAURO, Com'r
Douglas Howard
 For Information Only

E.N. PATTON OIL CO. INC.		
SURVEY PLAT		
STONEWALL COUNTY, TEXAS		
OWEN SURVEYING CO. BRECKENRIDGE, TEXAS		
Scale 1"=1000'	Date 11-25-92	Print Number STO-152 B

Certified Correct
Cody Owen
 Registered Public Land Surveyor
 Licensed State Land Surveyor

○ = 1/2" Steel pin set
 ● = 1/2" Steel pin found
 Bearings based on astronomic north.