



25 Cents for examining each Survey.  
Please remit in Advance.

# General Land Office.

Austin, Aug 1st 1881

Statement for W. O. Hutchison, Esq.  
San. Marcos, Hays Co. Tex.

W. M. Perry 640 acres Not Donation.

The surveyor certifies that he established the N. corner of Pettit's survey by running 1344 vs. 1405 W. from the West corner of no. 21 (S. W. Huffman's survey) whereas the field notes of Pettit's survey on file in this Office call to be begun at the W. corner of no. 15, which is also the S. corner of no. 11, I. Boroditch, from which a live oak 24 inch mxd. X 5.65' E 40 vs. an elm 18 in mxd. X S. 15° W. 20 vs. - see sketch for other bearings etc - bearings differ with those of surrounding surveys. The former surveyor D. C. Hardin filed Feb 26/75 a certified statement & sketch showing a space of 437 vs. between Hoffman and Boroditch. Explanation required. The surveyor should look for old corners & not depend too much on course & distance, as it is well known that the old surveys are frequently defective.

Chain of transfer from Perry to Hutchison & from the latter to McKie correct. Claims will revert to McKie when survey is corrected.

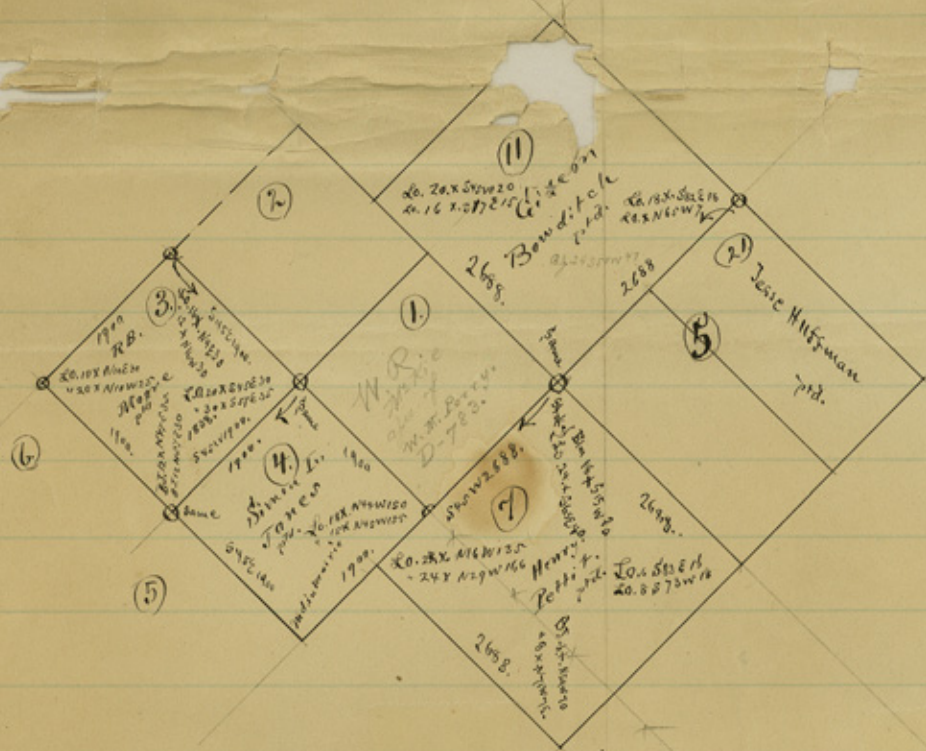
Sketch herewith enclosed.

Respectfully

D. 783. Travis

W. C. Marsh

111



x37

Clay Co

Aug 1/81

SK "A" "A"  
8/2/81 ~~17~~ Carey & Co

Sketch file

Dated Aug. 2, 1881.

S-959  
B-890  
S-1244  
D-783

number 26188