

GC & S.F. R.R. CO # 2

933 6 Acres
whole survey -

816 6 acres
to Club.

TOTAL whole survey 937 1/2 Acres.

MARTIN MURCHISON SUR.

Wm N HUDIESTON SUR.

Plat Showing
G.C. & S.F. R.R. # 2 Part of K K Club.
J. R. B. Smitherman a state Land surveyor. Certify that I went upon the ground and made the above survey, and that lines and markers both natural and artificial are just as shown by the above plat and field notes. This the 28th day of Jan. A.D. 1936.

J. R. B. Smitherman
Licensed State Land Surveyor
Atkins, Texas.

RECEIVED

FEB 6 1936

REFERRED TO MAP

Counter 26361

NOTE: — Scale
1 inch = 288 vrs. = 800 ft.
AREA TO WHICH PATENT
IS SOUGHT, OUTLINED IN RED.

759

County 26362

REC'D
LEB 8 1836

Sketch File No. 19 17

Henderson County
11 mi S. 5° W - Athens
by Smitherman

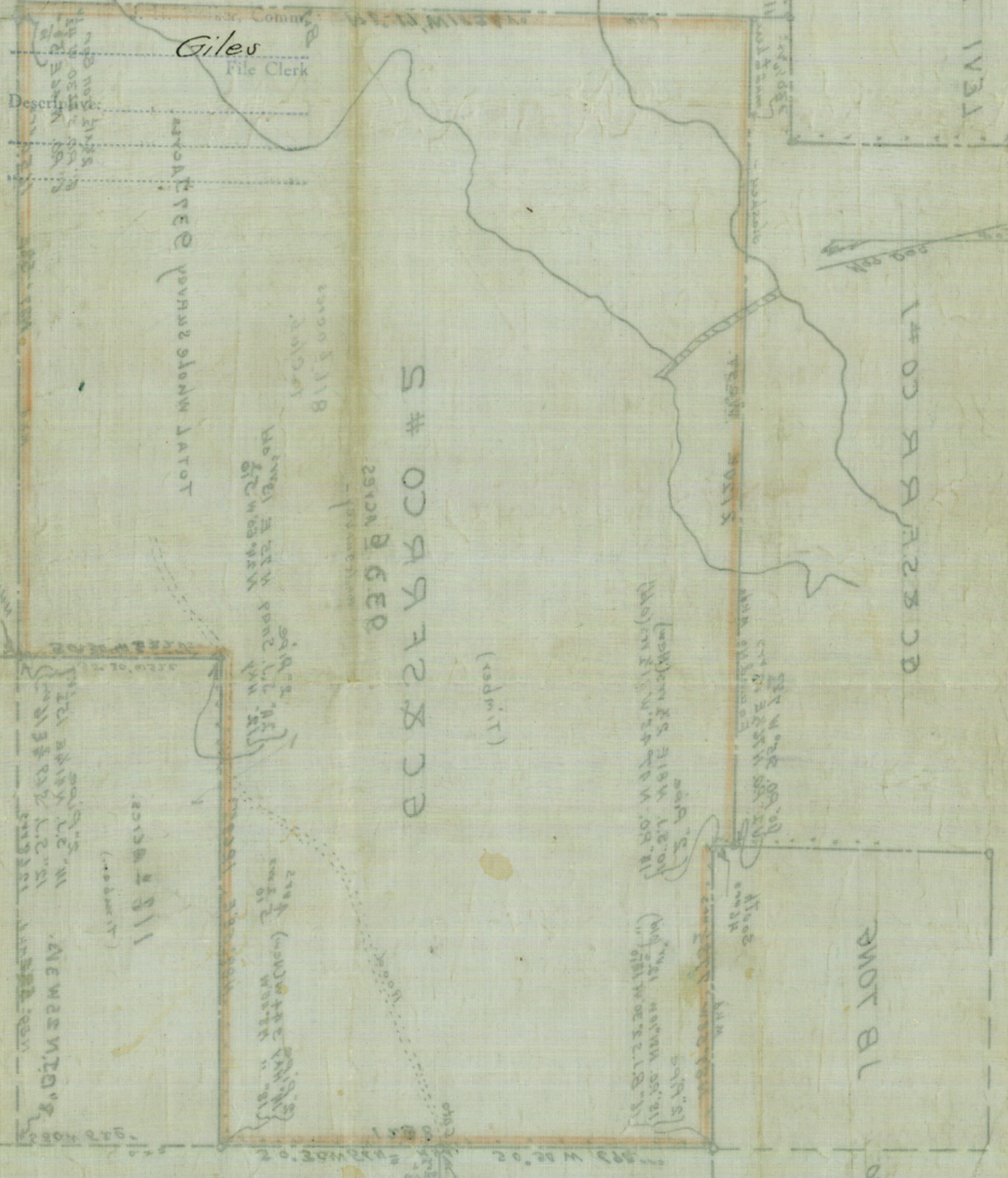
Filed 1-23 1936

Giles
File Clerk

Descriptive:

1/2 Sec 20, T22S, R22E
1/2 Sec 21, T22S, R22E

Handwritten notes in red and black ink, including:
"19008 = 24888 = 4 mi"
"T22S, R22E"
"1/2 Sec 20, T22S, R22E"
"1/2 Sec 21, T22S, R22E"
"1/2 Sec 22, T22S, R22E"
"1/2 Sec 23, T22S, R22E"
"1/2 Sec 24, T22S, R22E"
"1/2 Sec 25, T22S, R22E"
"1/2 Sec 26, T22S, R22E"
"1/2 Sec 27, T22S, R22E"
"1/2 Sec 28, T22S, R22E"
"1/2 Sec 29, T22S, R22E"
"1/2 Sec 30, T22S, R22E"
"1/2 Sec 31, T22S, R22E"
"1/2 Sec 32, T22S, R22E"
"1/2 Sec 33, T22S, R22E"
"1/2 Sec 34, T22S, R22E"
"1/2 Sec 35, T22S, R22E"
"1/2 Sec 36, T22S, R22E"
"1/2 Sec 37, T22S, R22E"
"1/2 Sec 38, T22S, R22E"
"1/2 Sec 39, T22S, R22E"
"1/2 Sec 40, T22S, R22E"
"1/2 Sec 41, T22S, R22E"
"1/2 Sec 42, T22S, R22E"
"1/2 Sec 43, T22S, R22E"
"1/2 Sec 44, T22S, R22E"
"1/2 Sec 45, T22S, R22E"
"1/2 Sec 46, T22S, R22E"
"1/2 Sec 47, T22S, R22E"
"1/2 Sec 48, T22S, R22E"
"1/2 Sec 49, T22S, R22E"
"1/2 Sec 50, T22S, R22E"
"1/2 Sec 51, T22S, R22E"
"1/2 Sec 52, T22S, R22E"
"1/2 Sec 53, T22S, R22E"
"1/2 Sec 54, T22S, R22E"
"1/2 Sec 55, T22S, R22E"
"1/2 Sec 56, T22S, R22E"
"1/2 Sec 57, T22S, R22E"
"1/2 Sec 58, T22S, R22E"
"1/2 Sec 59, T22S, R22E"
"1/2 Sec 60, T22S, R22E"
"1/2 Sec 61, T22S, R22E"
"1/2 Sec 62, T22S, R22E"
"1/2 Sec 63, T22S, R22E"
"1/2 Sec 64, T22S, R22E"
"1/2 Sec 65, T22S, R22E"
"1/2 Sec 66, T22S, R22E"
"1/2 Sec 67, T22S, R22E"
"1/2 Sec 68, T22S, R22E"
"1/2 Sec 69, T22S, R22E"
"1/2 Sec 70, T22S, R22E"
"1/2 Sec 71, T22S, R22E"
"1/2 Sec 72, T22S, R22E"
"1/2 Sec 73, T22S, R22E"
"1/2 Sec 74, T22S, R22E"
"1/2 Sec 75, T22S, R22E"
"1/2 Sec 76, T22S, R22E"
"1/2 Sec 77, T22S, R22E"
"1/2 Sec 78, T22S, R22E"
"1/2 Sec 79, T22S, R22E"
"1/2 Sec 80, T22S, R22E"
"1/2 Sec 81, T22S, R22E"
"1/2 Sec 82, T22S, R22E"
"1/2 Sec 83, T22S, R22E"
"1/2 Sec 84, T22S, R22E"
"1/2 Sec 85, T22S, R22E"
"1/2 Sec 86, T22S, R22E"
"1/2 Sec 87, T22S, R22E"
"1/2 Sec 88, T22S, R22E"
"1/2 Sec 89, T22S, R22E"
"1/2 Sec 90, T22S, R22E"
"1/2 Sec 91, T22S, R22E"
"1/2 Sec 92, T22S, R22E"
"1/2 Sec 93, T22S, R22E"
"1/2 Sec 94, T22S, R22E"
"1/2 Sec 95, T22S, R22E"
"1/2 Sec 96, T22S, R22E"
"1/2 Sec 97, T22S, R22E"
"1/2 Sec 98, T22S, R22E"
"1/2 Sec 99, T22S, R22E"
"1/2 Sec 100, T22S, R22E"



S # 029728305

(admit)

(admit) 1/2 Sec 20, T22S, R22E

(admit) 1/2 Sec 21, T22S, R22E

1/2 Sec 22, T22S, R22E

1/2 Sec 23, T22S, R22E

1/2 Sec 24, T22S, R22E

1/2 Sec 25, T22S, R22E

1/2 Sec 26, T22S, R22E

1/2 Sec 27, T22S, R22E

1/2 Sec 28, T22S, R22E

1/2 Sec 29, T22S, R22E

1/2 Sec 30, T22S, R22E

1/2 Sec 31, T22S, R22E

1/2 Sec 32, T22S, R22E

1/2 Sec 33, T22S, R22E

1/2 Sec 34, T22S, R22E

1/2 Sec 35, T22S, R22E

1/2 Sec 36, T22S, R22E

1/2 Sec 37, T22S, R22E

1/2 Sec 38, T22S, R22E

1/2 Sec 39, T22S, R22E

1/2 Sec 40, T22S, R22E

1/2 Sec 41, T22S, R22E

1/2 Sec 42, T22S, R22E

1/2 Sec 43, T22S, R22E

1/2 Sec 44, T22S, R22E

1/2 Sec 45, T22S, R22E

1/2 Sec 46, T22S, R22E

1/2 Sec 47, T22S, R22E

1/2 Sec 48, T22S, R22E

1/2 Sec 49, T22S, R22E

1/2 Sec 50, T22S, R22E

1/2 Sec 51, T22S, R22E

1/2 Sec 52, T22S, R22E

1/2 Sec 53, T22S, R22E

1/2 Sec 54, T22S, R22E

1/2 Sec 55, T22S, R22E

1/2 Sec 56, T22S, R22E

1/2 Sec 57, T22S, R22E

1/2 Sec 58, T22S, R22E

1/2 Sec 59, T22S, R22E

1/2 Sec 60, T22S, R22E