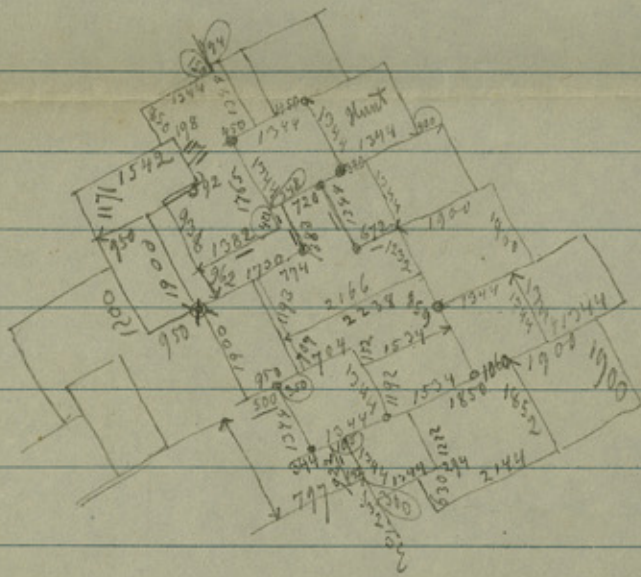


315  
 Tho<sup>s</sup>.  
 Ferry  
 J. B. Petty  
 3-2187  
 J. D. Price  
 3-2400  
 M. Wilkins  
 3-2407  
 J. J. Wilson  
 3-2398  
 W. B. Brown  
 2-4522  
 B. January  
 3-1853  
 John Hunt  
 3-1800  
 S. H. White  
 3-2404  
 I. H. White  
 1-1834  
 B. N. Brown  
 2-4522  
 S. H. Green  
 3-2264  
 S. H. Taylor  
 3-2449  
 T. W. Jackson  
 3-923  
 S. H. Green  
 3-2264  
 S. H. Taylor  
 3-2449  
 B-723

*File 23.*

*plotted in Office. Apr. 29/62.*

counter 26513



2166  
 400  
 8664.00

2688  
 1900  
 4588

4588  
 1440  
 350  
 1060

560  
 300  
 260  
 1060  
 1320

248  
 720  
 292  
 1360  
 1450  
 956

11.12.14.15.

1850  
 1744  
 105  
 244  
 3673  
 1744  
 1524  
 1060  
 3938

23  
File ~~23~~

17  
Hill County

On S. W. corner of Ellis  
County.

Plotted in Office April 20.  
1862.

county 26515

	966
	27
	814
8218	8218
009	9558
256	662
2021	2561
0667	0061
125	45
2241	2241
668	256
	596

554

	2946	2946
566	462	6146
292	2141	216
4221	9601	256
	61	256
		662