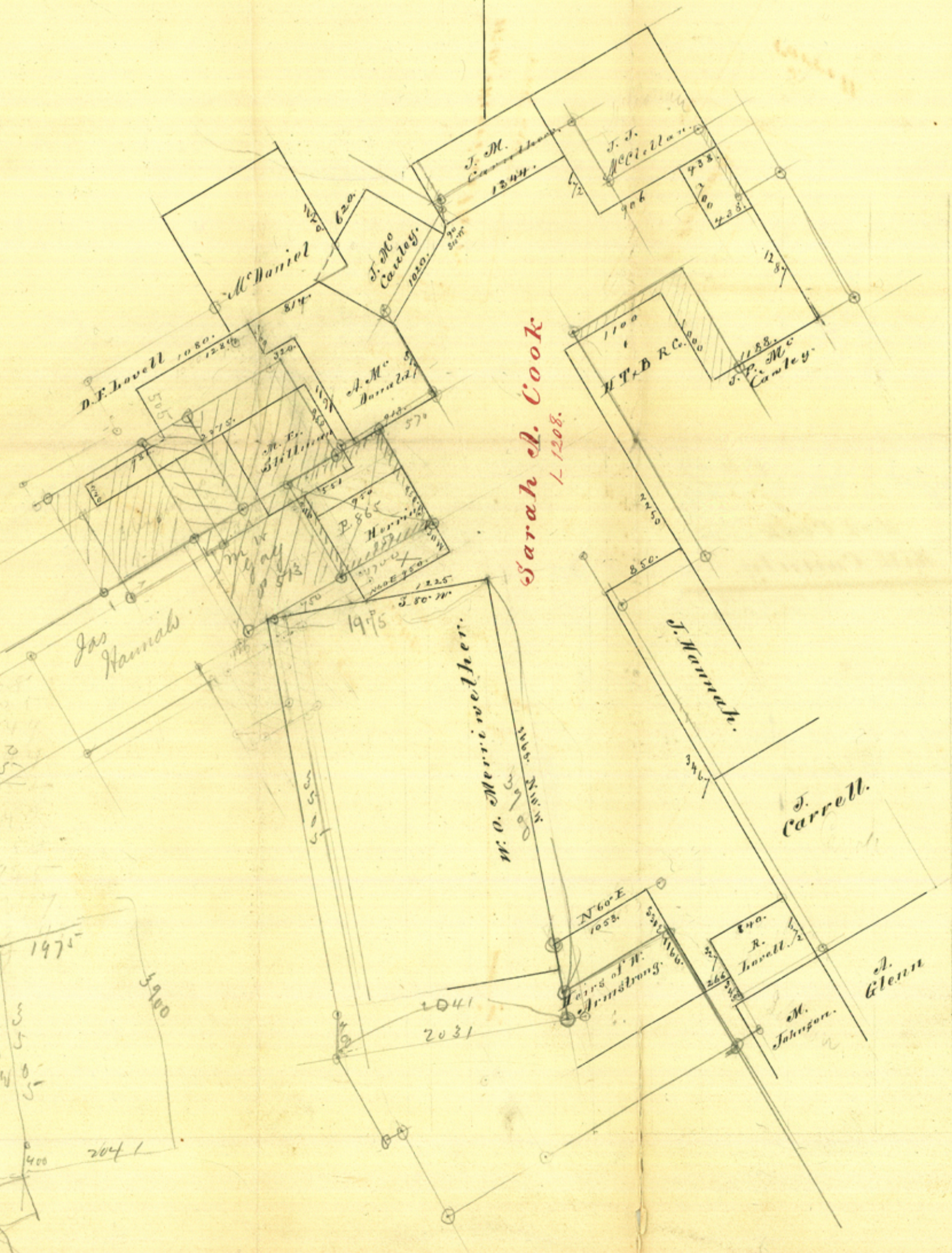


N.



Sarah A. Cook
L. 1208.



File #²⁴

18,

S. A. Cook 1. 1208.

Hill County.

9 mi. N30E
Hillsboro.

compiled from
(Doc) Field notes
in Office
E. Atkinson

- Sketch -
Office of Surs. around the
Sarah A. Cook sur., about
9 mi. N30° E of Hillsboro,
|

County 26517