

10 DAYS RETURN
J. M. CHADWICK
COUNTY SURVEYOR
HOOD COUNTY,
GRANBURY, TEXAS.

20 12

Filed above

Hood C

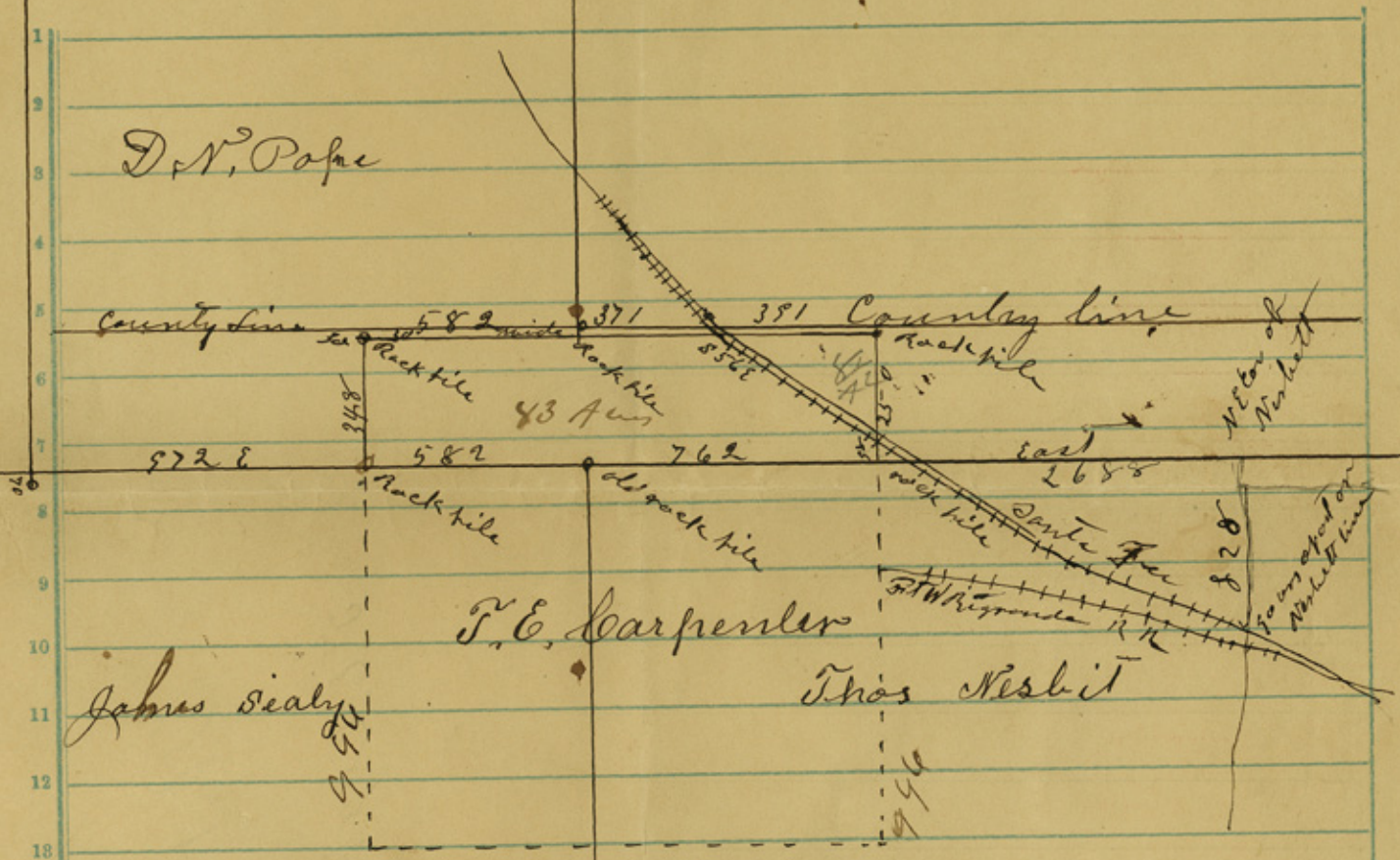
Col. W. L. McLaughrey
Austin

Try a

Atch
12/6/43

RECEIVED
DEC 10 1843
AUSTIN, TEXAS

County 26590



all
 43 Acre not in conflict in local survey
 75 Acre West of RR
 8 1/2 Acre east of RR in location Parker
 counter 26511

18

17

16

15

14

13

12

11

10

9

8

7

6

5

4

3

2

Plat of

J. E. Carpenter

counter 26592

Hood Co. Sk. File #12

N line of N T & B R R joining Moses O Deomon
papers 50 vis N of David Shelby's NW cor Hunter again
see comes further S and with Stokes NW cor
Green Turners S.W cor is 200 or in the J E
Crites Down N line likes 20 yrs of connecting
with Boatright William Hunter & P S Hughlett
coming down to Doan after passing Boatright
S E cor Enock Martin S W cor bears N 30¹/₂ or from
b. B. C. H. Granbury is located on Thomas
Lambert & is further east than the map
shows the river is not right on old map

Cal T.C.H. W 11 1/4 S 13 1/4 E To River 4 1/2

~~1140~~
~~2200~~
~~2250~~
~~2256~~
~~1350~~
~~6750~~
~~8100~~

~~1314~~
~~200~~
~~2600~~
~~2600~~
~~1500~~
~~7875~~
~~9450~~

~~500~~
~~172~~
~~9768~~
~~1400~~
~~600~~
~~600~~
~~400~~
~~570~~
~~36~~
~~5856~~
~~2928~~
~~351236~~

~~1400~~
~~200~~
~~800~~

Hood Co. St. File # 12



Hood Co scale 1000 yds to one inch
 magnetic variation 9 50 East