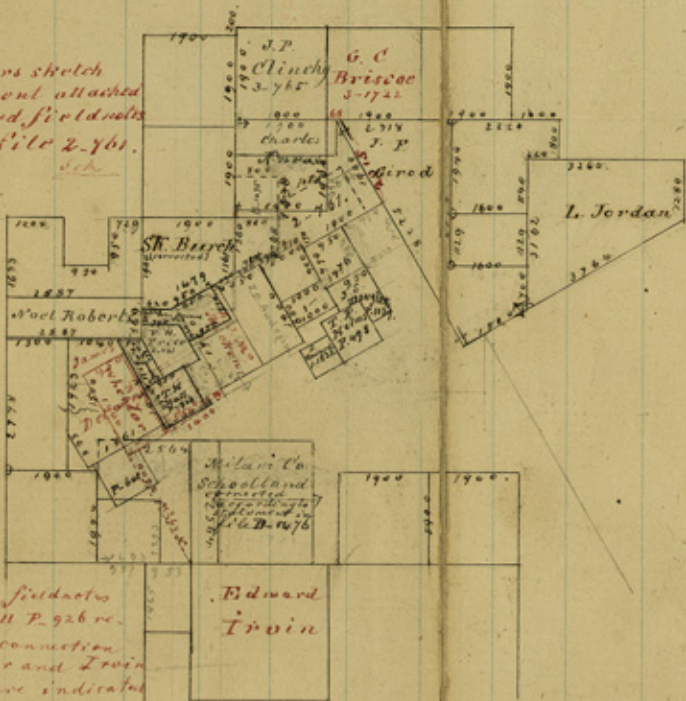


Rodney Wheeler 3-835
 surveyed April 30/50
 Delany surveyed July 6/50

See surveyors sketch
 and statement attached
 to corrected fieldnotes
 of survey file 2-761.



The sketch on fieldnotes
 of the T.H. Hall P. 926 re-
 presents the connection
 of the Wheeler and Irwin
 surveys as here indicated
 in red ink.

The connection of the Wheeler
 SE corner, S 52° 10' W from the
 Mc. Mickin SW corner shows
 the Delany survey to be
 in conflict with the Muler
 and the T.H. Hall P. 926 to
 conflict slightly with the
 Delany survey. (see surveyors
 sketch and statement of Aug 5/73)

Hall P. 926 corrected fieldnotes
 please the conflict.

Aug 1873 Schenck

P.H. Price P-121.

The apparent conflict with the Howard survey
 is removed by sketch and statement of Nov 28/73
 on file with the Price survey.

File #8
18

Hood County.

N. W. part.

Plotted in office June 1873

8/19/73.

L. Schuler

Dated Aug. 19, 1873,

3-314



Counter 26602