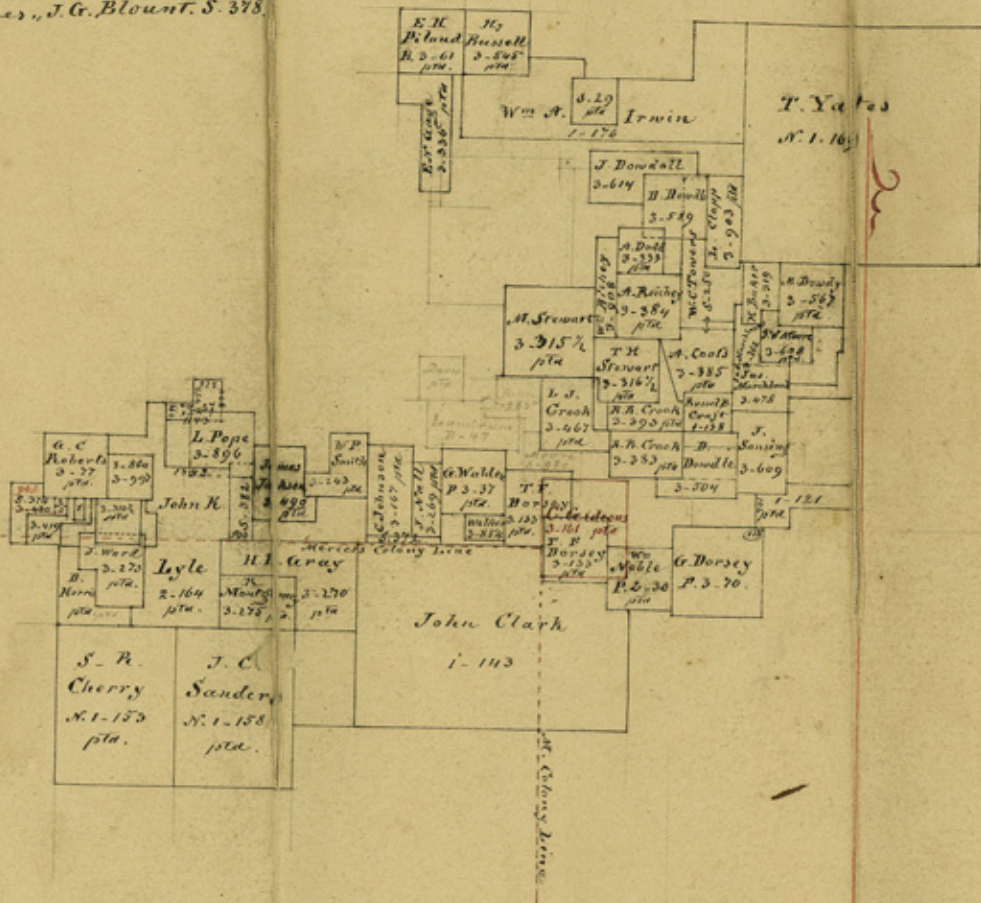


Some surveys on the S. line of
G. C. Roberts survey 3-77

- No. 1. 11 acres of M. J. W. Gee 3-782
- 2. 7 acres, G. W. Downing S. 387.
- 3. 7 acres, J. C. Blount, S. 378.



19 17
HOPKINS COUNTY

No. 17

Office sketch west of
Sulphur Springs
By Thielepape

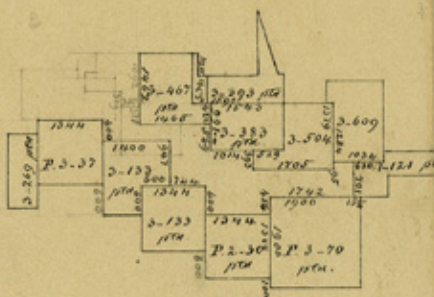
Dated: March 31, 1870

Filed: March 31, 1870.

*Thielepape's sketch
W. of Sulphur Springs*

counter 26721

Hopkins Co.
 files 17.



165
 160
 322
 175
 74
 12

counter 26722