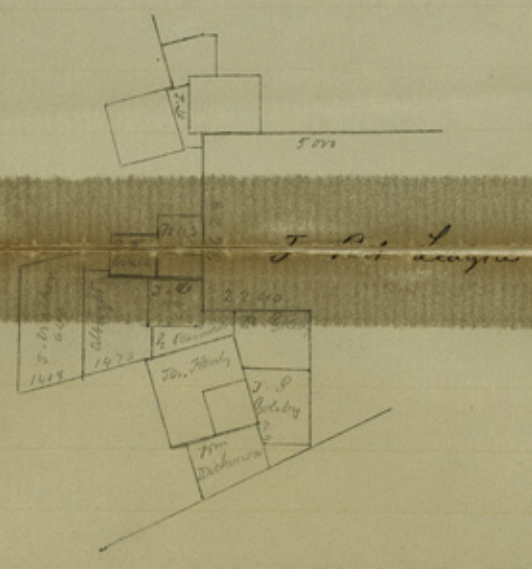


1409  
 1470  
 2878  
 170  
 2708  
 170  
 25  
 2708  
 2500  
 208



The State of Texas }  
 Houston County } I Charles Stokes Deputy  
 Surveyor of Houston Co  
 hereby Certify that the above sketch is a true  
 & correct representation of the position of the  
 following surveys of J. S. Goble, R. Goble, Geo  
 Ramsdale, Solomon Albright, S. F. Hall, W. B.  
 Stokes & J. C. Soregan, also Certify that none  
 of the above surveys conflict with each other  
 also that the A. E. Goulet 1000 acre survey  
 is 200 varas longer than represented in the  
 field notes which is the cause of the false  
 representation on Map of Houston.

Witness my hand  
 counter 26762

Charles Stokes  
 Deputy Surveyor Houston Co

62  
File ~~14~~ 14

Houston County

Filed Nov. 4/61

4 miles N. of Crockett