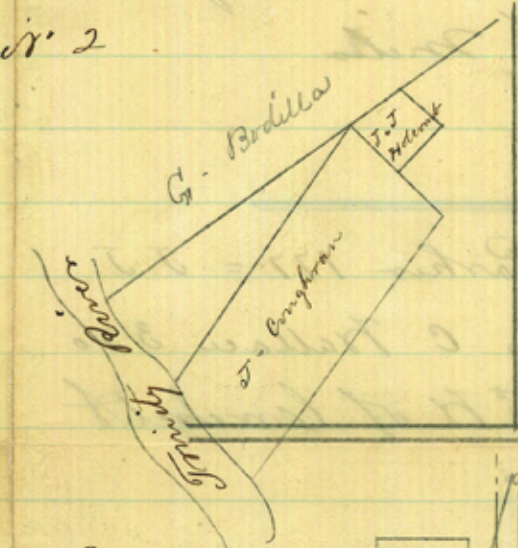
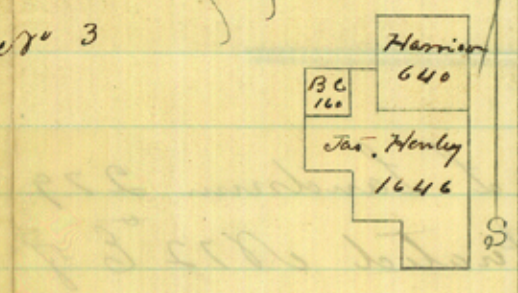


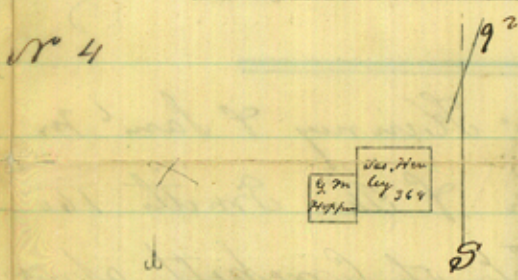
Sketch of J<sup>m</sup> Dickerson 320  
 3<sup>d</sup> class = J. L. R. White 320  
 Bounty Warrant = Both lying  
 South of Cricketh about 10 1/2  
 miles also Jas Henley  
 227 1/2 B. Warrant



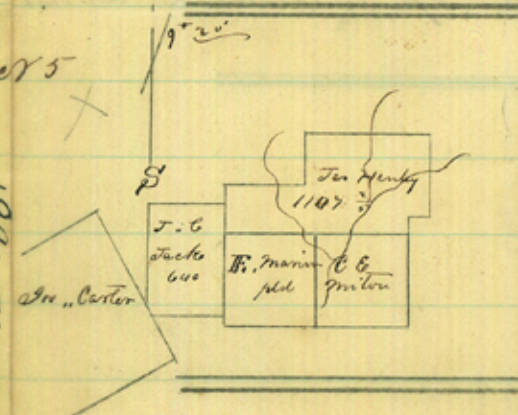
Sketch of J. J. Holcomb  
 1<sup>st</sup> class Situated S 25<sup>o</sup> W of  
 Cricketh about 26 miles



~~Sketch of J. J. Holcomb~~  
 Sketch of Jas Henley 1646  
 Acres Situated S 75<sup>o</sup> E of Crick  
 eth about 17 1/2 miles



Sketch of Jas Henley 368 1/2  
 Acres Situated N 75<sup>o</sup> E 20  
 miles from Cricketh



Sketch of Jas Henley 1187 acres  
 B Warrant = J. C. Jacks 640  
 B Warrant - Situated S 50<sup>o</sup> E  
 of Cricketh 10 1/2 miles

Received August 18/59  
 G. W. Stokes, U.S.

18<sup>th</sup> File  
 Sketch = Maps  
 for Hudson Co  
 1<sup>st</sup> August 1859  
 Filed August 18, 1859.  
 Sundry sketches of tracts  
 made by Chas. Stokes, since  
 May 1, 1859,

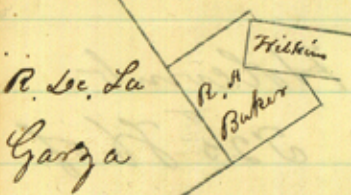
N<sup>o</sup> 6



Sketch of Jas Ferris 2 sur-  
veys 4<sup>th</sup> class - Both situated  
East of Crockett about 17 1/2  
Miles

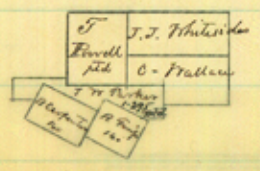
Scale 4000 rods per inch

N<sup>o</sup> 7



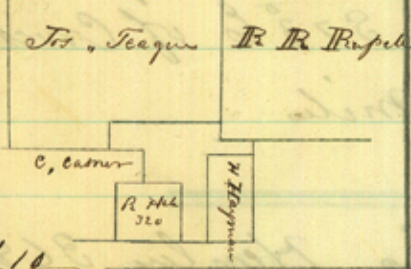
Sketch of R A Baker 640  
acres situated N 45° W of Crockett  
about 7 1/2 miles

N<sup>o</sup> 8



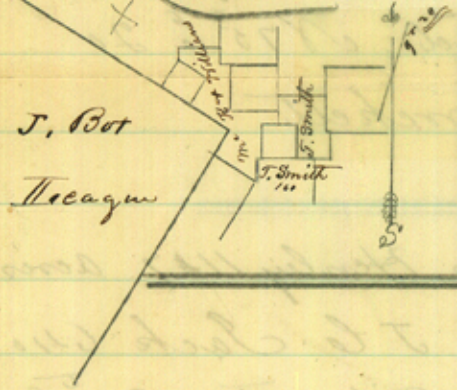
Sketch of J H Parker 177 = J J  
Whitaker 320 acres C Wallace 320  
acres situated N 10° W of Crockett  
about 13 miles

N<sup>o</sup> 9



Sketch of Jos L Landrum 279  
acres 3<sup>rd</sup> class situated N 72° E of  
Crockett 10 1/2 miles

N<sup>o</sup> 10



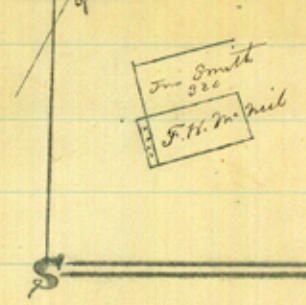
Sketch of Tho F M Kinney & Sam<sup>l</sup> M  
Williams 320 Acres & Tho Smith 160  
Acres situated N 43° E of Crockett about  
20 miles

N<sup>o</sup> 11



Sketch of Jos L Landrum  
58 acres situated N 20° E of  
Crockett about 4 miles = 3<sup>rd</sup> class

N<sup>o</sup> 12



Sketch of John Smith 42  
acre survey situated N 10° W  
of Crockett about 7 1/2 miles = 3<sup>rd</sup> class

The State of Texas & Charles  
Houston County & Stokes S. H. Co  
hereby certify that the within & annex-  
ed sketches are a true & correct copy  
of all surveys made since 1<sup>st</sup> May  
1859

August 1<sup>st</sup> A D 1859

Charles, Stokes  
Surveyor of Houston Co