

¹
HOWARD COUNTY SKETCH

FILE 1

General Land Office, Sept. 21, 1903.

Sundry Sketches.

See 3 Ketch 2 blue print
in Ice chest.

by Williams

counter 26839

The State of Texas

Magnetic Variation $10^{\circ} 35' E.$

County of Howard

Angle from polaris $1^{\circ} 27'$
in Western Elongation

Field Notes of a connecting Line Surveyed
for John Roberts and W.R. Settles for the
purpose of determining the proper position of
Block No. 29 Waco and North Western Railway
Company

Beginning at a large flat Stone set in the
Ground and marked NW 4 # 25 H & T C from which
a cluster of hack berries bears North 15° East 237 varas
this point is the North West corner of Survey No. 4
Block No. 25 H. & T. C. Ry. Co. as established
by Geo. Spiller State Surveyor Oct. 17th 1887

Thence South $88^{\circ} 35'$ East over open prairie 1889
varas to a large flat Stone marked NW 3 - 25 H & T C
Ry Co from which cordova peak bears North $41\frac{1}{2}^{\circ}$ West
this is the North West corner of Survey No. 3
Block No. 25 H. & T. C. Ry. Co.

Thence South $88^{\circ} 35'$ East 1889 varas to
a flat Stone marked NW 2 - 25 H & T C Ry Co
from which cordova peak bears North $43\frac{1}{2}^{\circ}$ West

Thence South $88^{\circ} 35'$ East 1905 varas crossing
a branch course North to an old Stone marked
65 varas East of said branch from which the
foundation of an old house bears South $15\frac{1}{2}^{\circ}$ West
365 varas this point is the North West corner of
Survey No. 1 Block No. 20 H. & T. C. Ry. Co.

Thence South $1^{\circ} 25'$ West 1922 varas
to a stake and a Stone at the South
West corner of said Survey No. 1 from which
Morgans peak bears South 35° East an Earth
mound and 4 pits bears North $87^{\circ} 10'$ East 123
varas a branch bears East 398 varas

① Thence South $1^{\circ} 25'$ West crossing a drain
course S.E. 1901 varas to a point

② Thence South $1^{\circ} 25'$ West 1901 varas to a point

- ③ Thence South $1^{\circ}25'$ West Crossing a drain 1901
varas to a point
- ④ Thence South $1^{\circ}25'$ West passing over a ridge
and at 1400 varas a point in Stricklands yard 15
varas East of house 1901 varas a point 80 varas
South of piece
- ⑤ Thence South $1^{\circ}25'$ West crossing a drain
course East also crossing a fence course S. $75^{\circ}15'$ W.
1901 varas to a point
- ⑥ Thence South $1^{\circ}25'$ West crossing fence
1901 varas to a point in heavy sand
- ⑦ Thence South $1^{\circ}25'$ West 1901 varas to a
point in large farm
- ⑧ Thence South $1^{\circ}25'$ West passing out of farm
and crossing Moigans Creek and a branch 1901
varas to a point
- ⑨ Thence South $1^{\circ}25'$ West crossing fence 1901
varas to a point
- ⑩ Thence South $1^{\circ}25'$ West crossing 2 drains
in Star draw 1901 varas to a point
- ⑪ Thence South $1^{\circ}25'$ West at $18\frac{3}{4}$ varas cross
the Texas and Pacific Rail Road 1901 varas to
a point
- ⑫ Thence South $1^{\circ}25'$ West passing over a very
high abrupt hill 1901 varas to a point
- ⑬ Thence South $1^{\circ}25'$ West passing through a
field of Johnson Grass and ascending rough rocky
hill 1901 varas to point in valley
- ⑭ Thence South $1^{\circ}25'$ West crossing a drain
course S.E. and a creek course East 1901 varas to a
point
- ⑮ Thence South $1^{\circ}25'$ West Crossing fence 1901
varas to a point on level divide
- ⑯ Thence South $1^{\circ}25'$ West 1901 varas to a
point on divide

⑦ miles.
Thence South $1^{\circ} 25'$ West descending rough rocky hill 1901 varas to point in Valley of Beals creek

Thence South $1^{\circ} 25'$ West 244 varas to a large Stone mound on top of rocky knoll

Thence South $46^{\circ} 25'$ West Crossing a branch and at 1515 varas a point from which a cedar stake in old Stone mound bears South 45° East 14 varas 2688 $\frac{1}{4}$ varas a point in Beals creek Valley

Thence South $46^{\circ} 25'$ West crossing Beals creek and a fence 2688 $\frac{1}{4}$ varas to a Stone Mound on the West line of Survey No. 35 Block No. 29 Waco and North Western Railway Company

Thence South $1^{\circ} 25'$ West crossing a drain 1657 varas to a large Stone Mound at the South West corner of Said Survey No. 35 this point is also the North West corner of Survey No. 62 of Block No. 29 Waco and North Western Ry. Co.

Thence South $1^{\circ} 25'$ West at 345 varas a Stone mound on top of hill from which the old Stone mound S.W. corner of Survey No. 47 Block No. 30 F. & P. Ry. Co. Township 1 South identified by its bearings bears South $85^{\circ} 9'$ East 151 varas and crossing a small canon and a drain 1901 varas to a pile of Stone and divide for the South West corner of Survey No. 62

Thence South $1^{\circ} 25'$ West at 1000 varas cross a branch and at 1430 varas cross another branch and at 1610 varas cross another branch 1901 varas to a large Stone mound for the S.W. corner of Survey No. 63

Thence South $46^{\circ} 25'$ West crossing branch and at 1400 varas erect a Stone mound and cross branch again 2688 $\frac{1}{4}$ varas a Stone mound for the South West corner of Survey No. 89

Thence North $88^{\circ}35'$ West passing over ridge and crossing a branch and over another ridge and crossing another branch 1901 varas to a Stone mound in bunch of burgrass this is the S.W. corner of Survey No. 88 and the S.E. corner of Survey No. 87

Thence North $88^{\circ}35'$ West crossing a drain and at 1600 varas cross a branch course north at 1901 varas a stone mound for the S.W. corner of Survey No. 87

Thence North $88^{\circ}35'$ West crossing a drain course north west and at 1261 varas cross a creek course north east and ascending a high abrupt bluff and crossing another drain course north west at 1406 varas at 1901 varas a Stone mound for the S.W. corner of Survey No. 86 and S.E. corner of Survey No. 85

Thence South $46^{\circ}25'$ West 2688 $\frac{1}{4}$ varas to a Stone mound in valley. This is the S.W. corner of Survey No. 96

Thence North $88^{\circ}35'$ West at 110 varas cross a fence passing over a ridge and crossing 2 ravines 1901 varas to a Stone mound for the S.W. corner of Survey No. 97

Thence North $88^{\circ}35'$ West crossing a creek course north east 1901 varas to a Stone mound the S.W. corner of Survey No. 98

Thence North $88^{\circ}35'$ West at 73 varas cross a fence and crossing another fence and a small branch about 200 varas south of Roberts ranch house 1901 varas a Stone mound for the S.W. corner of Survey No. 99

Thence North $88^{\circ}35'$ West at 40 varas cross a drain and ascend a hill and at 1901 varas a Stone mound on level divide for the S.W. corner of Survey No. 100

Thence North $88^{\circ}35'$ West crossing a drain course
South East 1901 Varas to a Stone mound for the
S. W. corner of Survey No. 101 and the S. E.
Corner of Survey No. 102

Thence South $1^{\circ}25'$ West 1901 Varas to a
Stone mound on South Slope for the S. W. corner
of Survey No. 108

Thence South $1^{\circ}25'$ West crossing drain
course East and crossing a fence 1901 Varas to
a Stone mound for the S. E. corner of Survey
No. 130

Thence South $1^{\circ}25'$ West 1901 Varas to
a Stone mound for the S. W. corner of Survey
No. 136

Thence South $1^{\circ}25'$ West crossing drain course
West at a small tank 1901 Varas to a Stake in
Stone mound 80 varas South of line for
the S. E. corner of Survey No. 158 and S. W.
corner of Survey No. 157 of Block No. 29 W. &
N. W. Ry. Co.

Surveyed August 29th and 31st } 1903
Sept. 1st 2nd 3rd and 4th }

J. P. Duncan } Chain carriers
B. S. Mobley }

I J. H. Sear County Surveyor of Howard County Texas
do hereby certify that the foregoing Survey was
made by me on the ground and
that all marks lines ^{and} corners are properly
and correctly described and set forth in
the foregoing field notes and Sketch A.
which accompanies these notes

Sept 18th 1903 J. H. Sear County Surveyor
Howard County Texas

File 1 Howard Co. SK

G. F. O. Sept. 21, 1903.

Field Notes of
connecting line for
Block No. 29
W. & N.W. Ry. Co.
for John Roberts
and
W. R. Settles

Howard county

Filed and recorded
Sept. 18th 1903
in Book No. 1.

Record of Field Notes
Howard county.

Pages 69 to 73

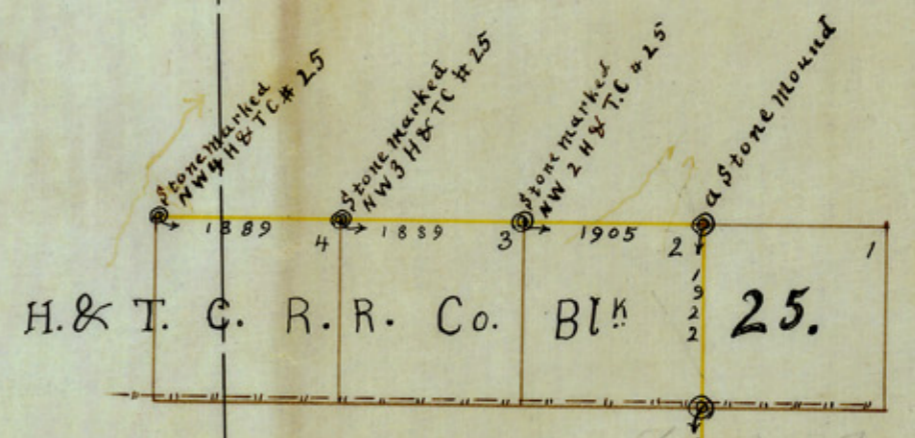
J. H. Seay Surveyor
Howard County Texas

W
S

county 26845

Sketch **A.** From Howard County
 Scale 2000 varas to 1 inch

Filed: Howard Co. 28
 G.L.O. Sept 21 1903



North Boundary line M.E.P. & P. 16 Mile Reservation

Howard County

Mitchell Co.

Track Station T. & P. R. R.



I T.H. Seay County Surveyor of Howard Co. do hereby certify that the foregoing sketch is a correct sketch of Connecting line Surveyed by me from N.W. corner of Survey No. 4. H. & T. C. Ry. Co. Bl. No. 25 to the S.W. corner of Survey No. 157 W. & N. W. Ry Co. Bl. No. 29.

Witness my hand *T.H. Seay* County Surveyor
 Howard County Texas
 September 17th 1903

Sterling Co.

Glasscock Co.