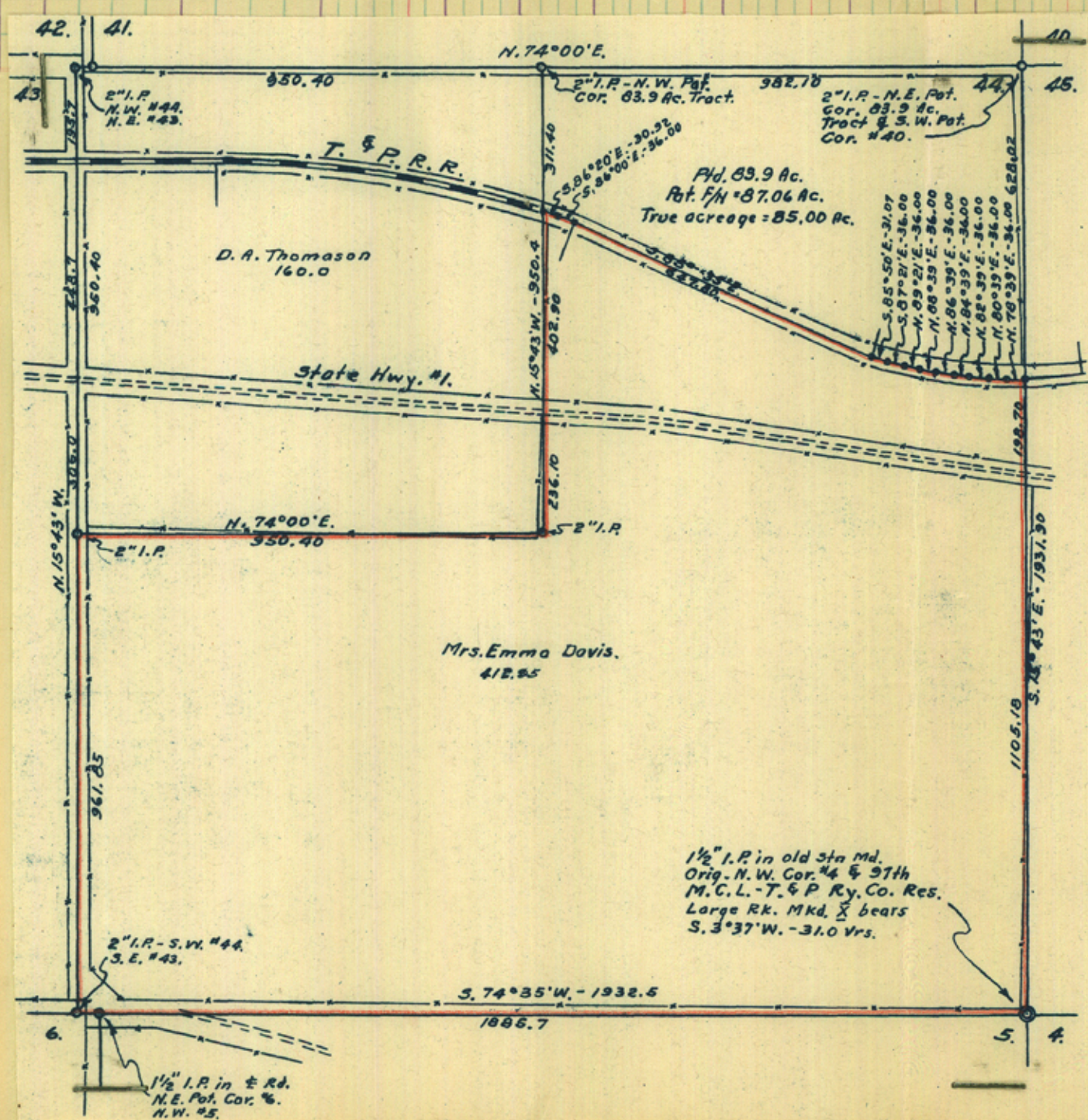


STATION	AZ MUTH	BEARING	DISTANCE	CO.	SINE	LATITUDES		DEPARTURES		CORRECTED INTERIOR ANGLES		D. M. D.	N. D. A.	S. D. A.
						N	S	E	W	LATITUDES	DEPARTURES			
1-2	254°00'	N. 74°00' E.	950.40	27564	96126	261.96		913.58		90°17'	913.58	239,321.42		
2-3	164°17'	N. 15°43' W.	639.00	96261	27088	615.11			173.09	269°43'	1654.07	1,017,434.99		
3-4	273°40'	S. 86°20' E.	30.92	06395	99795		198	30.83		70°37'	1511.81			2993.38
4-5	274°00'	S. 86°00' E.	36.00	06976	99756		252	35.91		179°46'	1578.55			3977.84
5-6	274°25'	S. 85°35' E.	647.80	07701	99703		49.89	645.87		179°35'	2260.33			112767.86
6-7	274°10'	S. 85°50' E.	31.07	07266	99736		227	30.99		180°15'	2937.19			6667.42
7-8	272°39'	S. 87°21' E.	36.00	04623	99893		167	35.96		181°31'	3004.14			5016.91
8-9	269°21'	N. 89°21' E.	36.00	01134	99994		41	35.99		183°18'	3076.09		1261.19	
9-10	268°39'	N. 88°39' E.	36.00	02356	99972		85	35.99		180°42'	3148.07		2675.86	
10-11	266°39'	N. 86°39' E.	36.00	05844	99829		210	35.94		182°00'	3220.06		6762.00	
11-12	264°39'	N. 84°39' E.	36.00	09324	99564		335	35.84		182°00'	3291.78		11027.46	
12-13	262°39'	N. 82°39' E.	36.00	12793	99178		460	35.70		182°00'	3363.32		15471.27	
13-14	260°39'	N. 80°39' E.	36.00	16246	98671		585	35.52		182°00'	3434.54		20092.06	
14-15	258°39'	S. 78°39' E.	36.00	19680	98044		708	35.29		182°00'	3505.35		24817.88	
15-16	344°17'	S. 15°43' E.	1303.88	96261	27088		1255.13	353.19		94°22'	3893.83			4,887,262.85
16-17	74°35'	S. 74°35' W.	1932.50	26584	96402		513.73		1862.96	89°42'	2384.06			1,224,763.14
17-1	164°17'	N. 15°43' W.	961.85	96261	27088		925.38		260.55	90°18'	260.55		241,238.03	
						1827.19	1827.19	2296.60	2296.60	2700°		1,580,102.16		6,243,449.50
														1,580,102.16
														2,466,347.34
														5645.2, 331,673.67
														412.95 ac.

17
x 2
34
- 4
30
x 90
2700



RECEIVED
DEC 3 - 1938
GENERAL LAND OFFICE

Sketch File No. 13

Howard County

Filed Dec. 3 1938

Wm. H. McDonald Com'r

Atlee

File, Clerk

Descriptive: Sketch

Balance sheets,

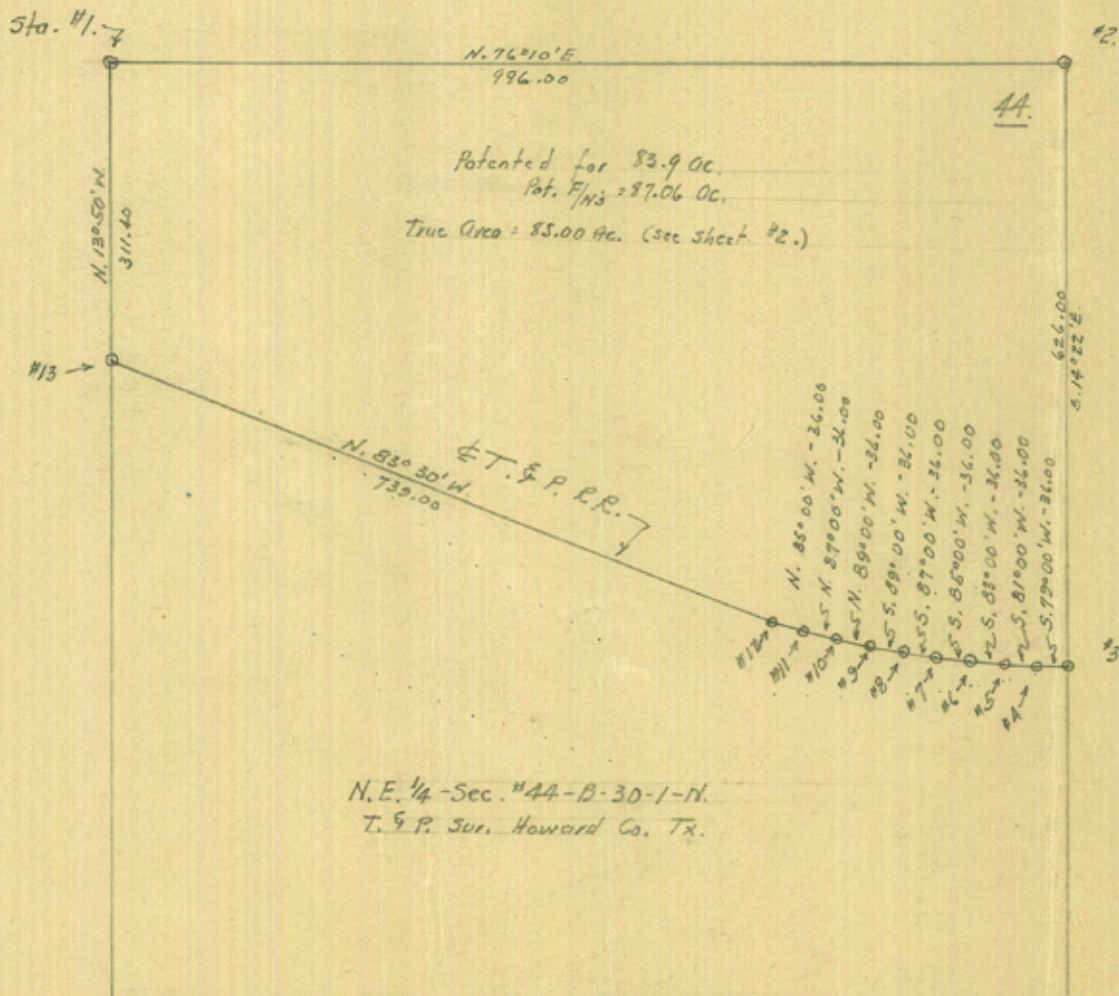
Sec #44, BIK 30-1-N

counter 26868

SP 10/10

STATION	AZ MUTH	BEARING	DISTANCE	CO.	SINE	LATITUDES		DEPARTURES		CORRECTED DEPARTURES		D. M. D.	N. D. A	S. D. A
						N	S	E	W	LATITUDES	DEPARTURES			
1-2	256° 10'	N. 76° 10' E.	996.00	.239098	.970995	238.14		-967.11		971.42	971.42	231,333.95		
2-3	345° 38'	S. 14° 22' E.	626.00	.968728	.248126		606.42	155.32			2098.16		1,272,366.18	
3-4	79° 00'	S. 79° 00' W.	36.00	.190809	.981627		687		35.33		2218.15		15,238.69	
4-5	81° 00'	S. 81° 00' W.	36.00	.156434	.987688		563		35.56		2147.26		12,089.07	
5-6	83° 00'	S. 83° 00' W.	36.00	.121869	.992546		439		35.73		2075.97		9,113.50	
6-7	85° 00'	S. 85° 00' W.	36.00	.087156	.996125		313		35.86		2004.38		6,273.71	
7-8	87° 00'	S. 87° 00' W.	36.00	.052334	.998629		188		35.99		1932.53		3,633.15	
8-9	89° 00'	S. 89° 00' W.	36.00	.017452	.999848		63		35.99		1860.55		1,172.14	
9-10	91° 00'	N. 89° 00' W.	36.00	.017452	.999848	63			35.99		1788.57	1126.80		
10-11	93° 00'	N. 87° 00' W.	36.00	.052334	.998629	188			35.95		1716.63	3227.26		
11-12	95° 00'	N. 85° 00' W.	36.00	.087156	.996125	313			35.86		1644.82	5148.28		
12-13	96° 30'	N. 83° 30' W.	739.00	.113203	.993572	83.67		-734.35		730.03	878.93	73540.07		
13-1	166° 10'	N. 13° 50' W.	311.40	.970995	.239098	302.36		74.45			74.45	22510.70		
						629.81	628.95	1122.43	1131.06			336,887.06	1,319,886.44	
						628.95		1122.43					336,887.06	
						.86			28.63				2) 982,999.38	
									4.31	← Correct 1st & 12th Departures by this amount for approx. balance		5645.4	491,492.69	87.06 Ac.
								1122.43	1131.06					
								+ 4.31	- 4.31					
								1126.74	1126.74					

DRAW SKETCH BELOW SHOWING BEGINNING POINTS: ALSO COURSE AND DISTANCES ON LINES

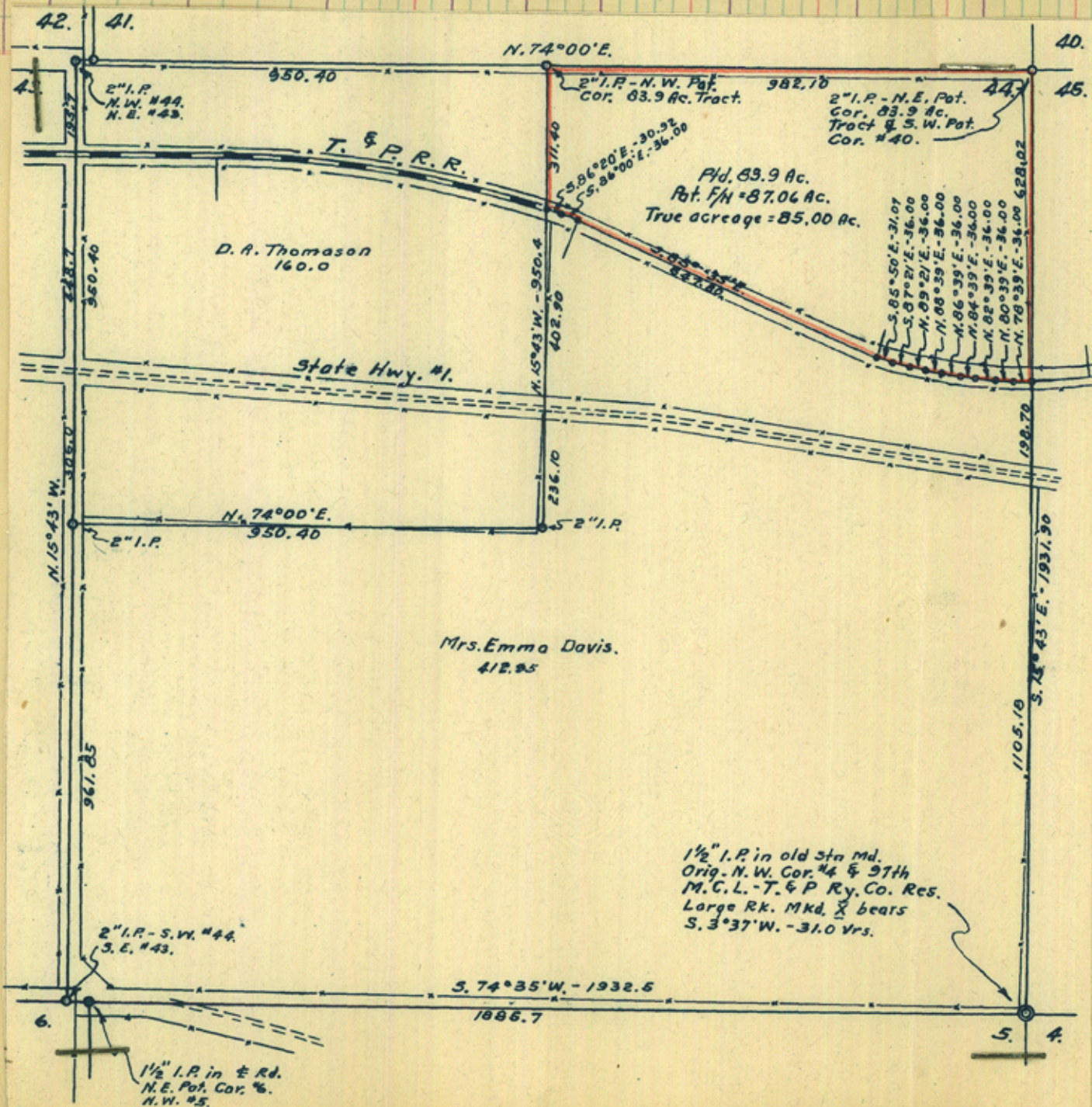


RECEIVED
DEC 3 - 1938
GENERAL LAND OFFICE

STATION	AZ MUTH	BEARING	DISTANCE	CO.	SINE	LATITUDES		DEPARTURES		Interior Angles		D. M. D.	N. D. A	S. D. A
						N	S	E	W	LATITUDES	DEPARTURES			
1-2	254°00'	N. 74°00' E.	982.10	27564	.96126	270.71		944.05		90°17'		944.05	2,555,63.77	
2-3	344°17'	S. 15°43' E.	628.02	96261	.27088		604.53	170.12		89°43'		2058.22		1,249,255.74
3-4	78°39'	S. 78°39' W.	36.00	19680	.98044		7.08		35.29	85°38'		2193.05		15526.79
4-5	80°39'	S. 80°39' W.	36.00	16246	.98671		5.84		35.52	178°00'		2122.24		12,393.88
5-6	82°39'	S. 82°39' W.	36.00	12793	.99178		4.60		35.70	178°00'		2051.02		9434.69
6-7	84°39'	S. 84°39' W.	36.00	09324	.99564		3.35		35.84	178°00'		1979.48		6631.26
7-8	86°39'	S. 86°39' W.	36.00	05844	.99829		2.10		35.94	178°00'		1907.70		4006.17
8-9	88°39'	S. 88°39' W.	36.00	02356	.99972		.85		35.99	178°00'		1835.77		1560.40
9-10	89°21'	S. 89°21' W.	36.00	01134	.99994		.42		35.99	179°18'		1763.79		740.79
10-11	92°39'	N. 87°21' W.	36.00	04623	.99893	1.66		35.96		176°42'		1691.84	2808.45	
11-12	94°10'	N. 85°50' W.	31.07	07266	.99736	2.26		30.98		178°29'		1624.90	3672.27	
12-13	94°25'	N. 85°35' W.	647.80	07701	.99703	49.89		645.87		179°45'		948.05	47,298.21	
13-14	94°00'	N. 86°00' W.	36.00	06976	.99756	2.51		35.91		180°25'		266.27	668.34	
14-15	93°40'	N. 86°20' W.	30.92	06395	.99795	1.98		30.83		180°20'		199.53	395.06	
15-1	164°17'	N. 15°43' W.	311.40	96261	.27088	299.76		84.35		109°23'		84.35	25284.75	
						628.77	628.77	1114.17	1114.17	2340°			335690.85	1,294,549.72

15
 x2
 30
 -9
 26
 x90
 2340

2958852.87
 56454 479929.93
 85.01 AC.



RECEIVED
 DEC 3 - 1938
 GENERAL LAND OFFICE