

D602
J. W. CARTER

ODIS CARTER

921

CARTER & CARTER

PROFESSIONAL ENGINEERS
LICENSED STATE LAND SURVEYORS
ROOM 103 COUNTY COURT HOUSE
EL PASO, TEXAS

Mar. 29, 1950

Hon. Bascom Giles, Commissioner
General Land Office,
Austin 14, Texas.

Attention: Alvis Vandygriff
Chief Clerk;

Re.- Public School Blocks 1-2-3-4 and 5, in El Paso and Hudspeth C
Counties, Texas.

With further reference to our conversation in your office
at Austin on march 16, 1950, I beg to report as follows:

The enclosed working sketch represents surveys made by me
on the ground and my conclusions in attempting to correlate
my surveys in relation to the A.H. Parker surveys of 1900.

The accompanying working sketch gives all available infor-
mation in my records and field books and I suggest that patents
be issued on all sections according to the original field notes
prepared by A.H. Parker in the year of 1900.

March 29, 1950

J.W.Carter

J.W. Carter
County Surveyor, El Paso County

Copy to
J.M. Goggin State Nat'l Bank. El Paso
Otho A. Manning 1st. Nat'l. Bank Bldg El Paso
Russell Mezies, Marfa, Texas
Lawrence Rhea
1414 Magnolia Bld'g. Dallas 1, Texas

Hudspeth Sk. File #30

RECEIVED

MAR 30 1950

REFERRED TO MAP

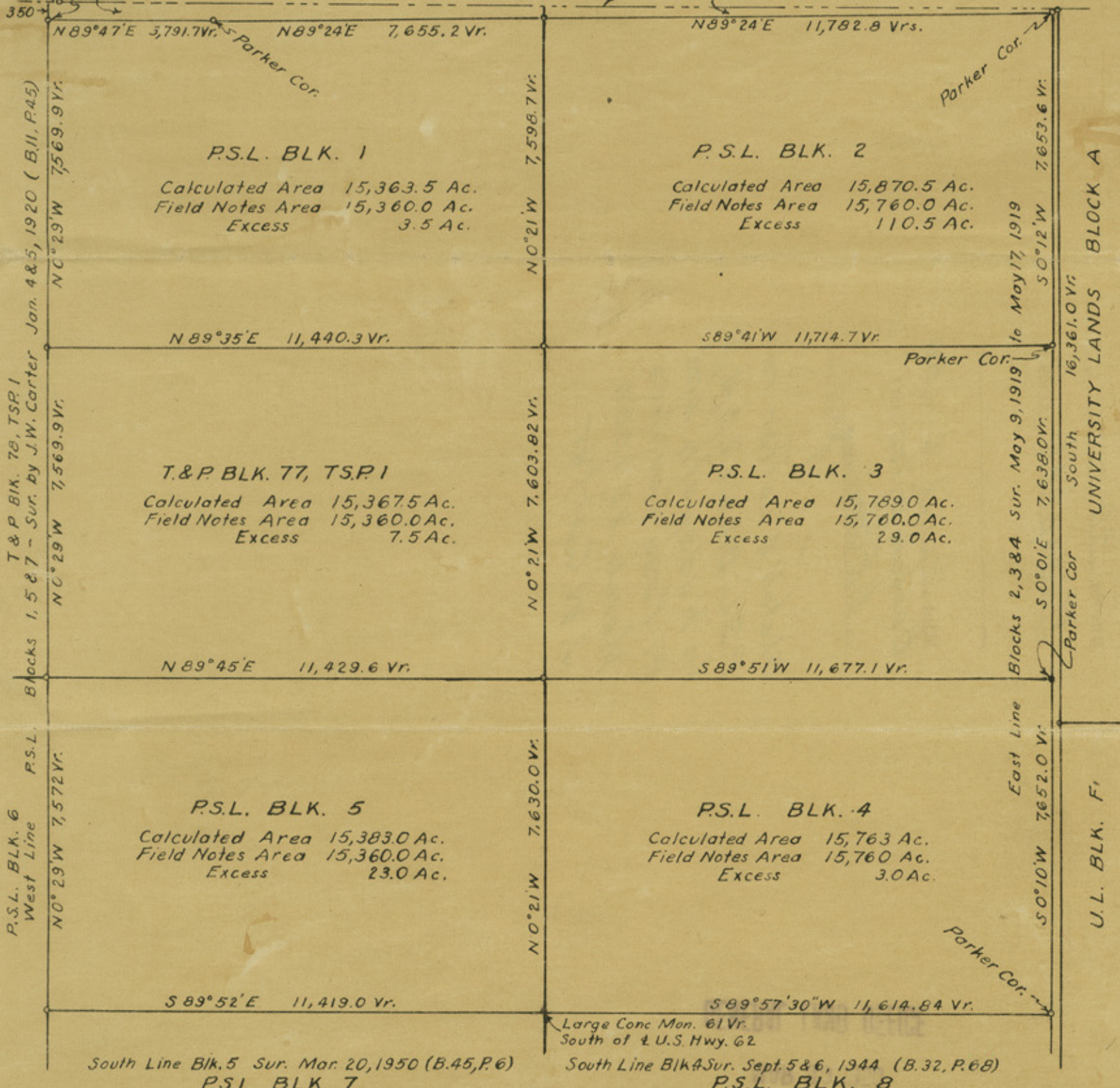
a

counter 26986

TEXAS - NEW MEXICO
BOUNDARY LINE

John Helms Sur. 20
By J. W. Carter 11-24 & 25-19

M.R. Hemley Sur. 426
By W.L. Rider 7-26-23



RECEIVED

WORKING SKETCH
PUBLIC SCHOOL BLOCKS 1 AND 5
EL PASO COUNTY, TEXAS
AND
PUBLIC SCHOOL BLOCKS 2, 3 AND 4
HUDSPETH COUNTY, TEXAS

Prepared from surveys made by me
on the ground from May, 1919 to
March 20, 1950.

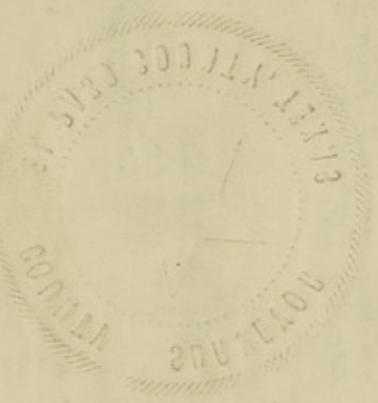
March 29, 1950
J. W. Carter
County Surveyor - El Paso County, Texas

Counter 26987

D/602

C-921

Counter 26988



RECEIVED

MAR 30 1950

GENERAL LAND OFFICE

SKETCH FILE

File No. 30

Hudspeth County

Filed April 6 19 50
Bascom Giles Com'r

V. E. Stinson
File Clerk

Sketch & Letter re -
P.S.L. Blks. 1, 2, 3, 4, 5
in Hudspeth and
El Paso Counties
March 29, 1950
J. W. Carter

AR