

54576

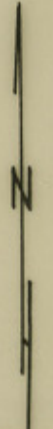
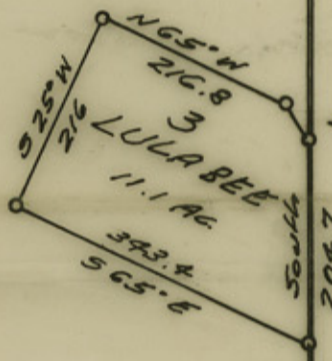
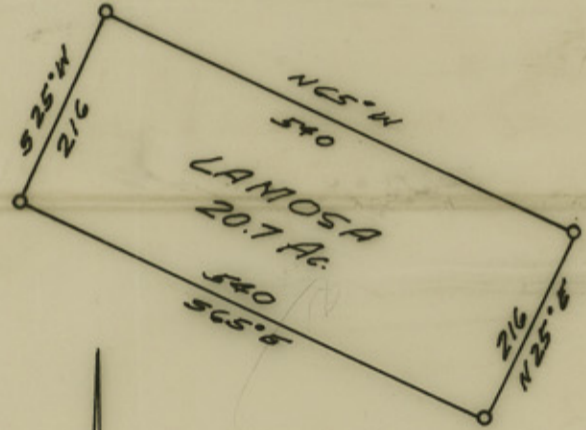
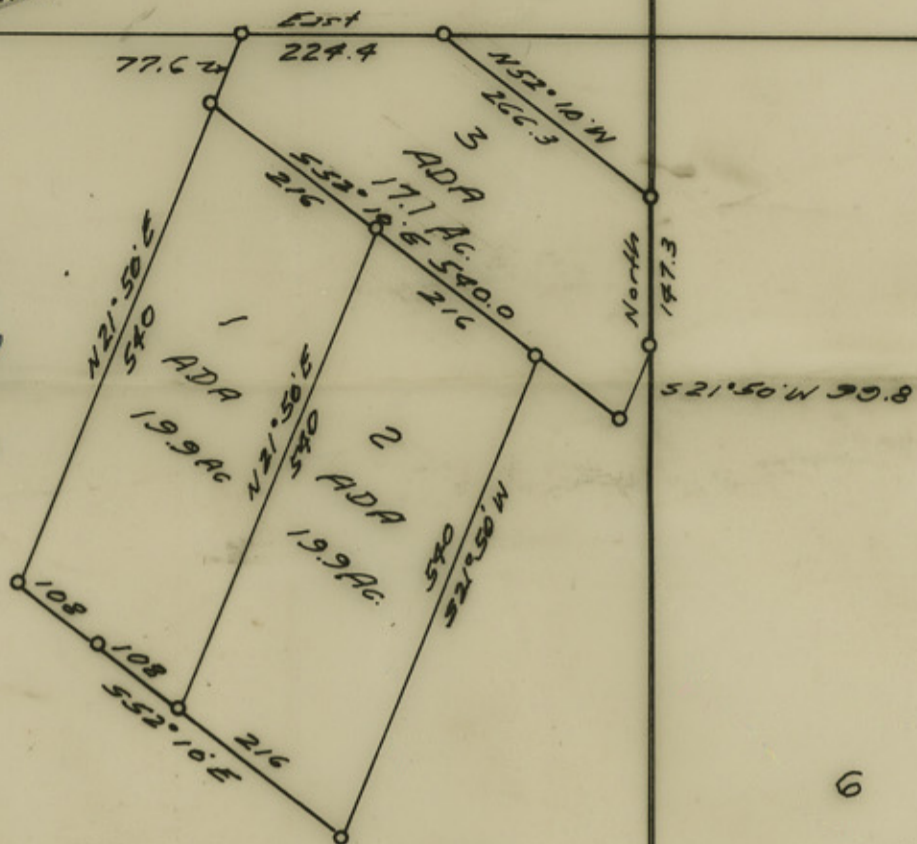
File No. SKETCH FILE 51
HUDSPETH County

Filed (JUNE 30 1962)
GARRY MAURO, Com'r
(DOUGLAS HOWARD)

FILED FOR RECORD

Dec. 3 1962

Bernie M. Elder
Phillip B. Under
Vol 6, Pg 74
Field notes



Scale: 1 in = 200 Yrs.

PUBLIC
Blk G3 1/2

SCHOOL
Blk G2 1/2

GARRY MAURO
 County Clerk
 12/15/62
 2K 62 1/2
 HUDSPETH
 County
 125521
 File No.

RECEIVED
DEC 15 1962

Map showing a part of the
JOHN REED RANCH
Hudspeth County, Texas.

Surveyed by me June 8, 1962.

G. B. Rawls
Licensed State Land Surveyor

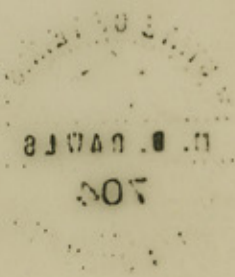
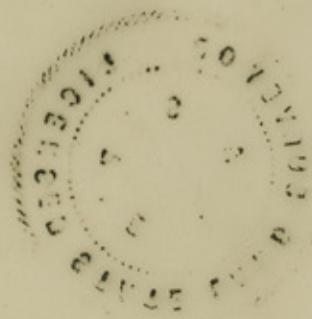
G. B. RAWLS
706



4

File No. 152748
 Hudspeth County
 Sketch
 Filed 12/15 1967
 HARRY MAURO, Com'r
 Bk C 1/4
 Bk C 1/4
 SCHOOL
 PUBLIC

RECEIVED
 DEC 12 1967
 Office



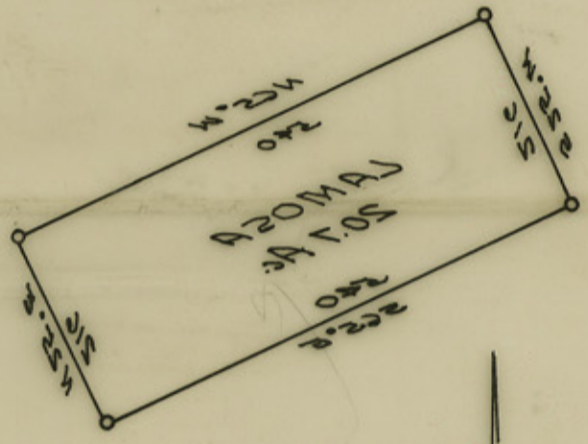
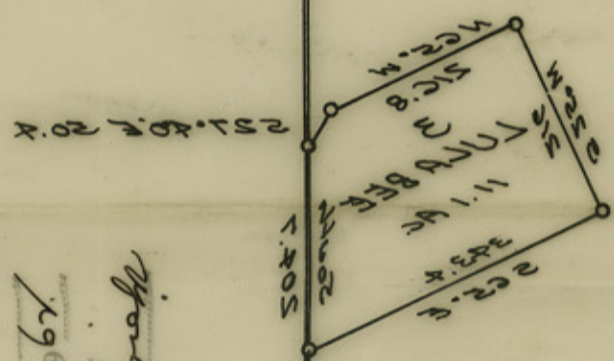
Licensed State Land Surveyor
 Surveyed by me June 8, 1967.
 Hudspeth County, Texas.
 Map showing a part of the
 JOHN REED RANCH

counter 27075

counter 27075

File No. SKETCH FILE 21
 HUDSPETH
 (June 30)
 GARRY MAURO, Com'r
 (Dundas)
 Howard)

FILED FOR RECORD
 Dec. 3 1967
 BOUNTY CLERK HUDSPETH COUNTY TEXAS
 William W. [unclear]
 Deputy
 10:15 AM '67
 J. H. [unclear]



Scale: 1 in = 500 ft



0.42

2

0

10

27075