

100285

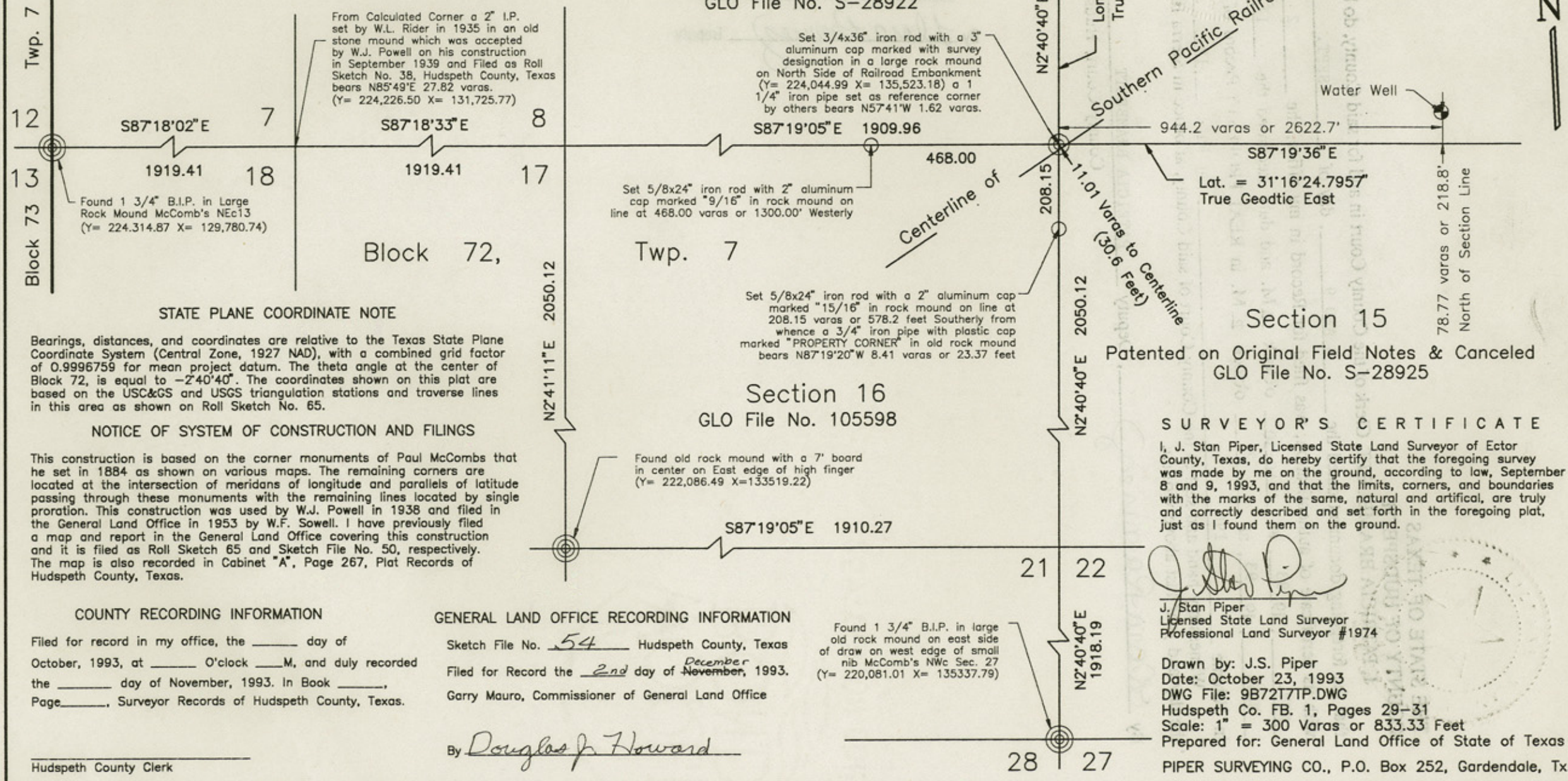
Plat Showing Survey To Establish SOUTHEAST CORNER OF SECTION 9, BLOCK 72, TWP. 7, T. & P. RR., Hudspeth County, Texas

Section 9
Patented on Original & Canceled
GLO File No. S-28922

Section 10
Patented on Original Field Notes
Jan. 17, 1945 (Minerals Reserved)
GLO File No. 123001

Section 16
GLO File No. 105598

Section 15
Patented on Original Field Notes & Canceled
GLO File No. S-28925



From Calculated Corner a 2" I.P. set by W.L. Rider in 1935 in an old stone mound which was accepted by W.J. Powell on his construction in September 1939 and Filed as Roll Sketch No. 38, Hudspeth County, Texas bears N85°49'E 27.82 varas. (Y= 224,226.50 X= 131,725.77)

Set 3/4x36" iron rod with a 3" aluminum cap marked with survey designation in a large rock mound on North Side of Railroad Embankment (Y= 224,044.99 X= 135,523.18) a 1 1/4" iron pipe set as reference corner by others bears N57°41'W 1.62 varas.

Set 5/8x24" iron rod with 2" aluminum cap marked "9/16" in rock mound on line at 468.00 varas or 1300.00' Westerly

Set 5/8x24" iron rod with a 2" aluminum cap marked "15/16" in rock mound on line at 208.15 varas or 578.2 feet Southerly from whence a 3/4" iron pipe with plastic cap marked "PROPERTY CORNER" in old rock mound bears N87°19'20"W 8.41 varas or 23.37 feet

Found old rock mound with a 7" board in center on East edge of high finger (Y= 222,086.49 X=133519.22)

Found 1 3/4" B.I.P. in large old rock mound on east side of draw on west edge of small nib McComb's NWc Sec. 27 (Y= 220,081.01 X= 135337.79)

Found 1 3/4" B.I.P. in Large Rock Mound McComb's NEc13 (Y= 224,314.87 X= 129,780.74)

STATE PLANE COORDINATE NOTE

Bearings, distances, and coordinates are relative to the Texas State Plane Coordinate System (Central Zone, 1927 NAD), with a combined grid factor of 0.9996759 for mean project datum. The theta angle at the center of Block 72, is equal to -2°40'40". The coordinates shown on this plat are based on the USC&GS and USGS triangulation stations and traverse lines in this area as shown on Roll Sketch No. 65.

NOTICE OF SYSTEM OF CONSTRUCTION AND FILINGS

This construction is based on the corner monuments of Paul McCombs that he set in 1884 as shown on various maps. The remaining corners are located at the intersection of meridians of longitude and parallels of latitude passing through these monuments with the remaining lines located by single proration. This construction was used by W.J. Powell in 1938 and filed in the General Land Office in 1953 by W.F. Sowell. I have previously filed a map and report in the General Land Office covering this construction and it is filed as Roll Sketch 65 and Sketch File No. 50, respectively. The map is also recorded in Cabinet "A", Page 267, Plat Records of Hudspeth County, Texas.

COUNTY RECORDING INFORMATION

Filed for record in my office, the _____ day of October, 1993, at _____ O'clock _____ M., and duly recorded the _____ day of November, 1993. In Book _____, Page _____, Surveyor Records of Hudspeth County, Texas.

GENERAL LAND OFFICE RECORDING INFORMATION

Sketch File No. 54 Hudspeth County, Texas
Filed for Record the 2nd day of December, 1993.
Garry Mauro, Commissioner of General Land Office

By Douglas J. Howard

Hudspeth County Clerk

SURVEYOR'S CERTIFICATE

I, J. Stan Piper, Licensed State Land Surveyor of Ector County, Texas, do hereby certify that the foregoing survey was made by me on the ground, according to law, September 8 and 9, 1993, and that the limits, corners, and boundaries with the marks of the same, natural and artificial, are truly and correctly described and set forth in the foregoing plat, just as I found them on the ground.

J. Stan Piper
J. Stan Piper
Licensed State Land Surveyor
Professional Land Surveyor #1974

J. Stan Piper
Licensed State Land Surveyor
Professional Land Surveyor #1974

Drawn by: J.S. Piper
Date: October 23, 1993
DWG File: 9B72T7TP.DWG
Hudspeth Co. FB. 1, Pages 29-31
Scale: 1" = 300 Varas or 833.33 Feet
Prepared for: General Land Office of State of Texas
PIPER SURVEYING CO., P.O. Box 252, Gardendale, Tx.

counter 27079

THE STATE OF TEXAS
COUNTY OF HUDSPETH

I, PATRICIA BRAMBLETT, Clerk of the County Court in and for said County, do hereby certify

that the foregoing document dated the 8 AND 9, day of SEPT., 1993,
with its certificate of authentication, was filed for Record in my office, the 2 day of
NOV., 1993, at 10:30 o'clock AM. and duly Recorded the 17 day of
NOV., 1993, at 2 o'clock P.M. in REAL PROPERTY Record of said County,
in Volume 196 on Page 191.

Witness my hand and seal of the County Court of said County, at office in Sierra Blanca, Texas,
the day and year last above written.

By *Clara Ramirez*, Deputy PATRICIA BRAMBLETT Clerk
County Court, Hudspeth County

FILED FOR RECORD

W/2 19 93

at 10:30 o'clock AM

Patricia Bramblett
COUNTY CLERK, HUDSPETH COUNTY, TEXAS

By *Clara Ramirez* Deputy

