

J. C. Cross  
George & Davis  
B-218

Mary Morris  
1-391

A. Riley  
3-679  
ptd

2-758  
ptd  
S.A. Dixon

Elyard  
3-806  
ptd

Thos  
Kimble

Attorkey  
3-955

Thos  
Jordan  
3-393  
ptd

John J. Hart  
3-905

J. Williams  
3-678

S. Cheney  
3-615  
ptd

S. Cheney  
3-691  
ptd

R. Mabry  
3-658  
ptd

John B  
Millet  
3-778  
ptd

Andra  
Lyday  
3-114  
ptd

Wm  
Barnall  
2-117  
ptd

Wm  
Barnall  
2-117  
ptd

Andrew  
Lyday  
2-114

Shaw Wood  
3-806

W. Williams

R. D. Lux, sr  
3-624  
ptd

H. Taylor  
3-869  
ptd

O. A. Ripley  
3-502  
ptd

H. P. Lewis  
3-626  
ptd

W. P. Lewis  
3-671  
ptd

W. P. Lewis  
3-671  
ptd

W. P. Lewis  
3-671  
ptd

W. P. Lewis  
3-671  
ptd

W. P. Lewis  
3-671  
ptd

W. P. Lewis  
3-671  
ptd

33 Degree

District line

County 27111

9  
11

✓

166  
File to ~~22~~

Hunt Co.

about 6 miles South  
from Greenville

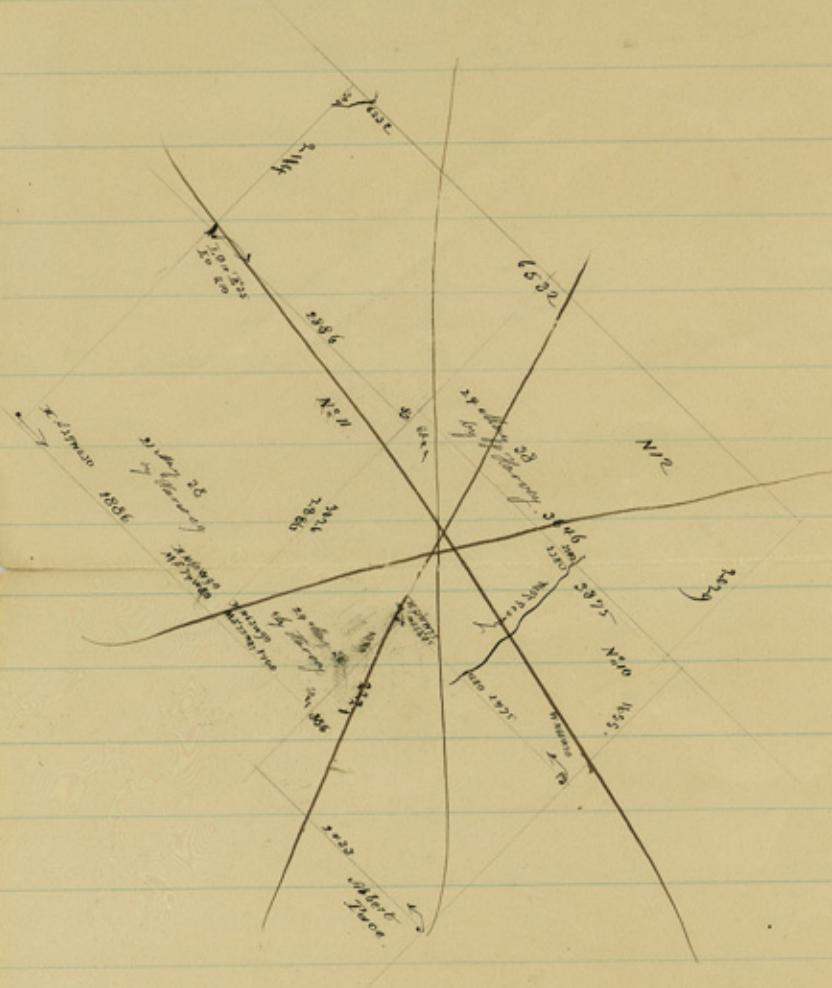
Pressler's office SK about 6,  
South of Greenville,

General Land Office,

Washington, Texas,

187





✓

counter 27113