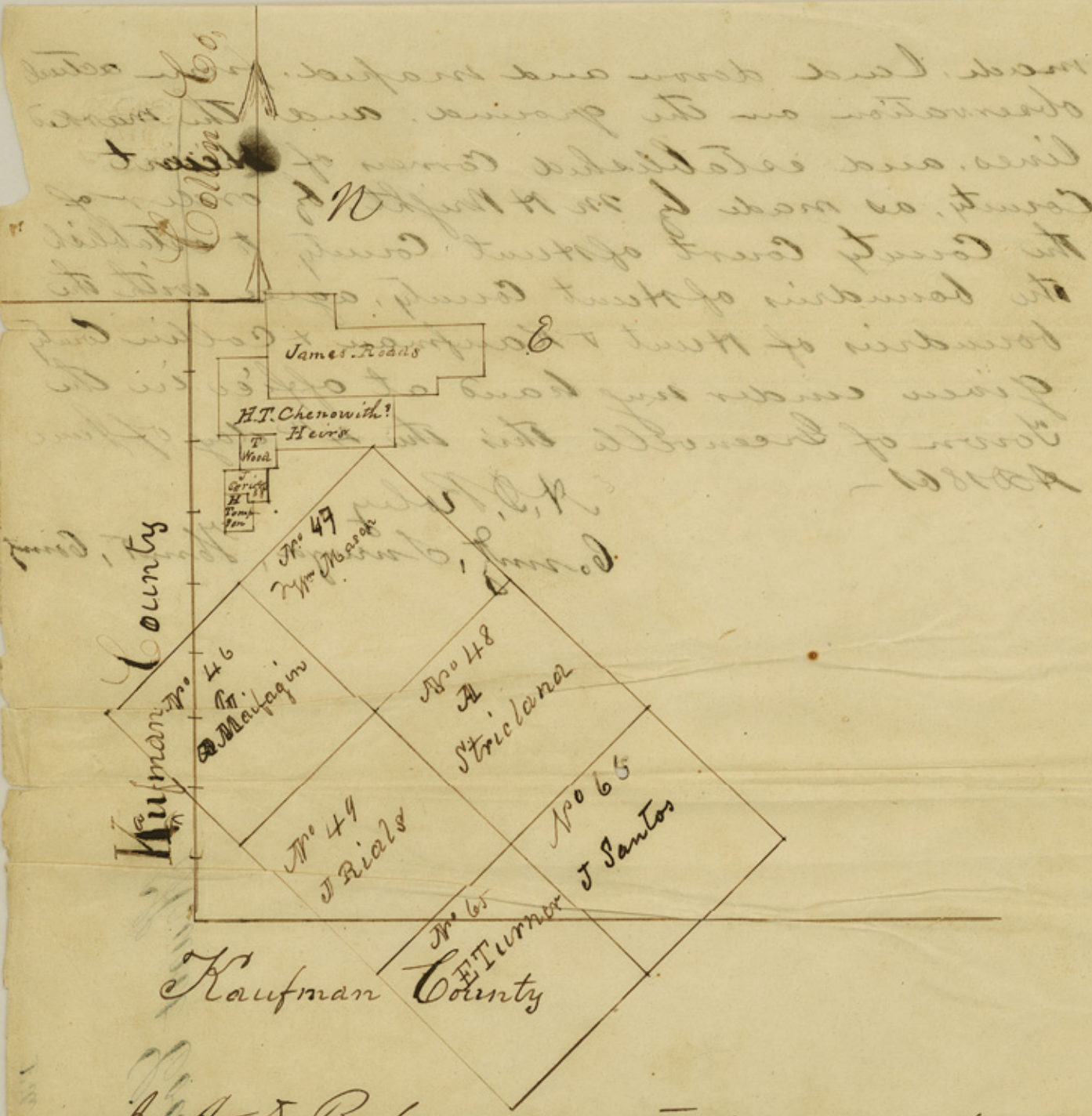


Hunt Co. 54 File #17



I A S Robey County Surveyor in and for Hunt County Texas do hereby certify that the above sketch map of surveys made for H. Thompson J. Briggs, T. Wood and the heirs of H. T. Chenoweth is true and correct, + made by actual observation + measurement on the ground. And also that the Wm Mason survey No. 47, is properly located in said sketch map, and that the lines of, Hunt, Kaufman and Collin Counties are laid down in their proper places, and were

made, laid down and mapped, from actual observation on the ground, and the marked lines, and established corners of ~~Six~~ <sup>Six</sup> County, as made by M H Wright, by order of the County Court of Hunt County, to establish the boundaries of Hunt County, agree with the boundaries of Hunt & Kaufman & Collier County given under my hand at office in the Town of Greenville this the 4<sup>th</sup> day of June AD 1861 -

A. D. Raley  
County, Surveyor, Hunt, County



*(Faint, mirrored text, likely bleed-through from the reverse side of the page)*

File 115

Greenville Hunt Co Texas  
June 5<sup>th</sup> 1861.

Hon F M White  
Comr Gen. L. Office  
Austin. Tex

Sir

You will perceive from the situation of the S. E. Cor. of Collin County, as shown by the enclosed sketch map, that there is a conflict of the lines of Hunt & Collin Counties, which arises from a discrepancy in the measurement of Cohorn and Orr, in laying off the Fannin Co. Land dist. lines, and has as I suppose, very naturally led to an error in the Gen. Land office, in placing the West boundary line of Hunt County, one mile farther East on the map than it really is on the Ground, as shown by the bearings for the South West Corner of Hunt County, & the marked line, between Hunt & Kaufman, on the West of Hunt Co. - Collin Co. has one mile off the West part of Hunt, according to the act creating the County of Hunt, & Hunt should be 25 miles wide, E & West, and as the Lines now stand, there is only 24 miles between the East boundary of Collin (as shown in this sketch) and the East boundary of Hunt as recently established between Hopkins & Hunt.

Respectfully Truly  
your obt Servt  
A. D. Kelly

County Surveyor, Hunt Co

27  
#27

J. W. Shufly

June 5/61.

Concerning County line

Hunt County  
file July 10/61

AD Robey's SK & Explanation  
of County boundary lines -

Dated June 5, 1861.

Filed July, 10. 1861.

Filed July 10/61  
S. W. S. 27-117

The sketch with explanations returned by the Surveyor cannot be taken as an evidence of the incorrectness of the County line as at present recognised, because the Surveyor does not show his starting point and as he refers to the recently established line between Hopkins & Hunt Counties, the latter line may as well have been run 1 mile farther West, than it ought to be. The true N.W. corner of Hopkins Co. is the S.W. corner of Lamar as established by John D. Black and its West line should thence run due South. Hunt County according to our map is 25 miles wide and not 24 miles and agrees with the field notes of the Hunt Co. boundary as run by M. Quincy H. Wright in November 1846 and returned to the Genl. Land Office in 1851 and has ever since been recognised as the true boundary of Hunt County by its own Surveyors. July 10/61

Profr.

counter 27117