

Sketch File No. 38

Hutchinson County
Sketch of
H. & T. C. Ry. Co. Blk 46
by Morris Browning

Filed December 30, 1941
Bascom Files, Com'r

M. Brown
File Clerk

counter 27280

RECEIVED

NOV 13 1941

REFERRED TO MAP

bt'

2003

2003

D-583
961

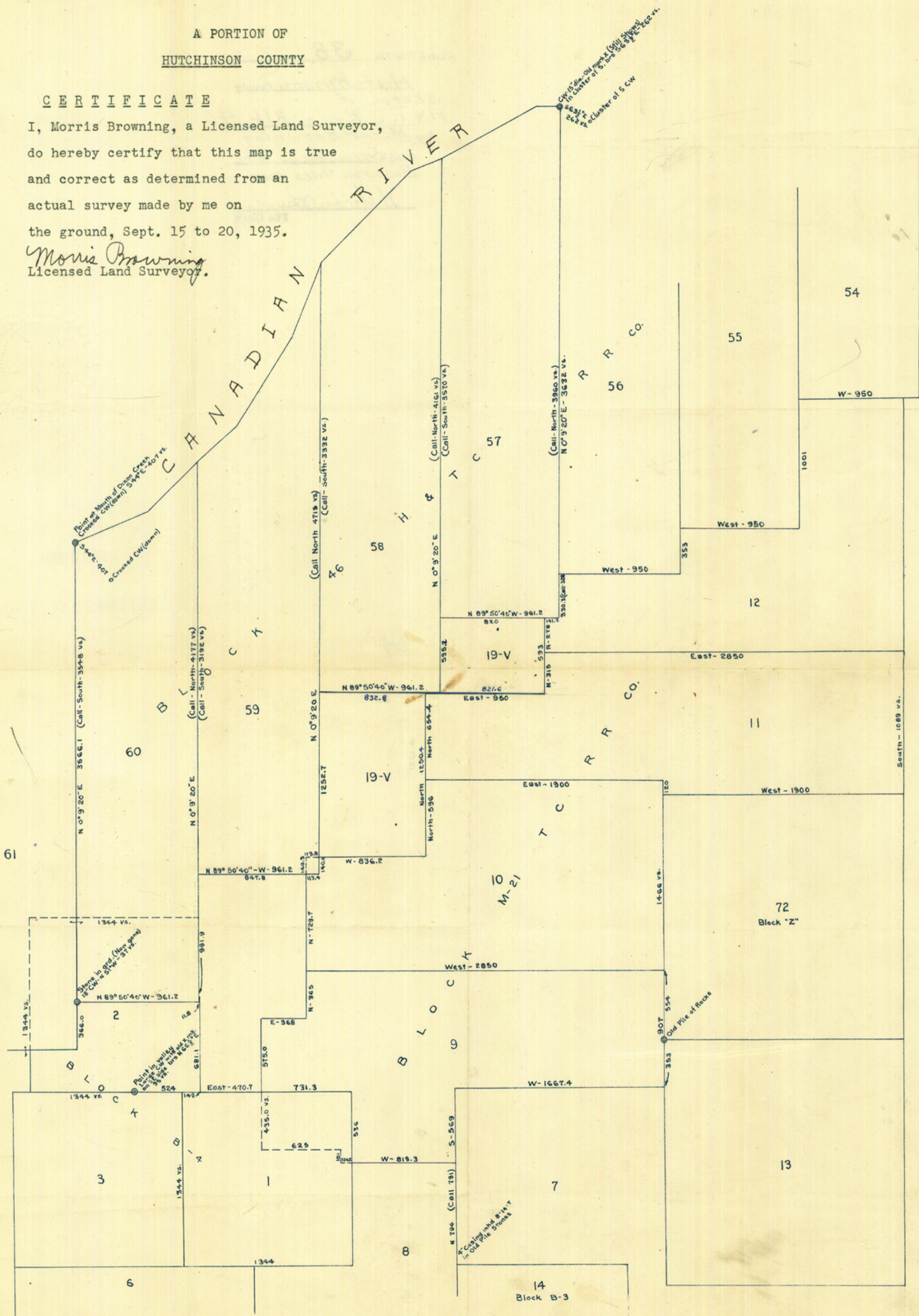
D-583

A PORTION OF
HUTCHINSON COUNTY

C E R T I F I C A T E

I, Morris Browning, a Licensed Land Surveyor,
do hereby certify that this map is true
and correct as determined from an
actual survey made by me on
the ground, Sept. 15 to 20, 1935.

Morris Browning
Licensed Land Surveyor.



lv

Counter 27229