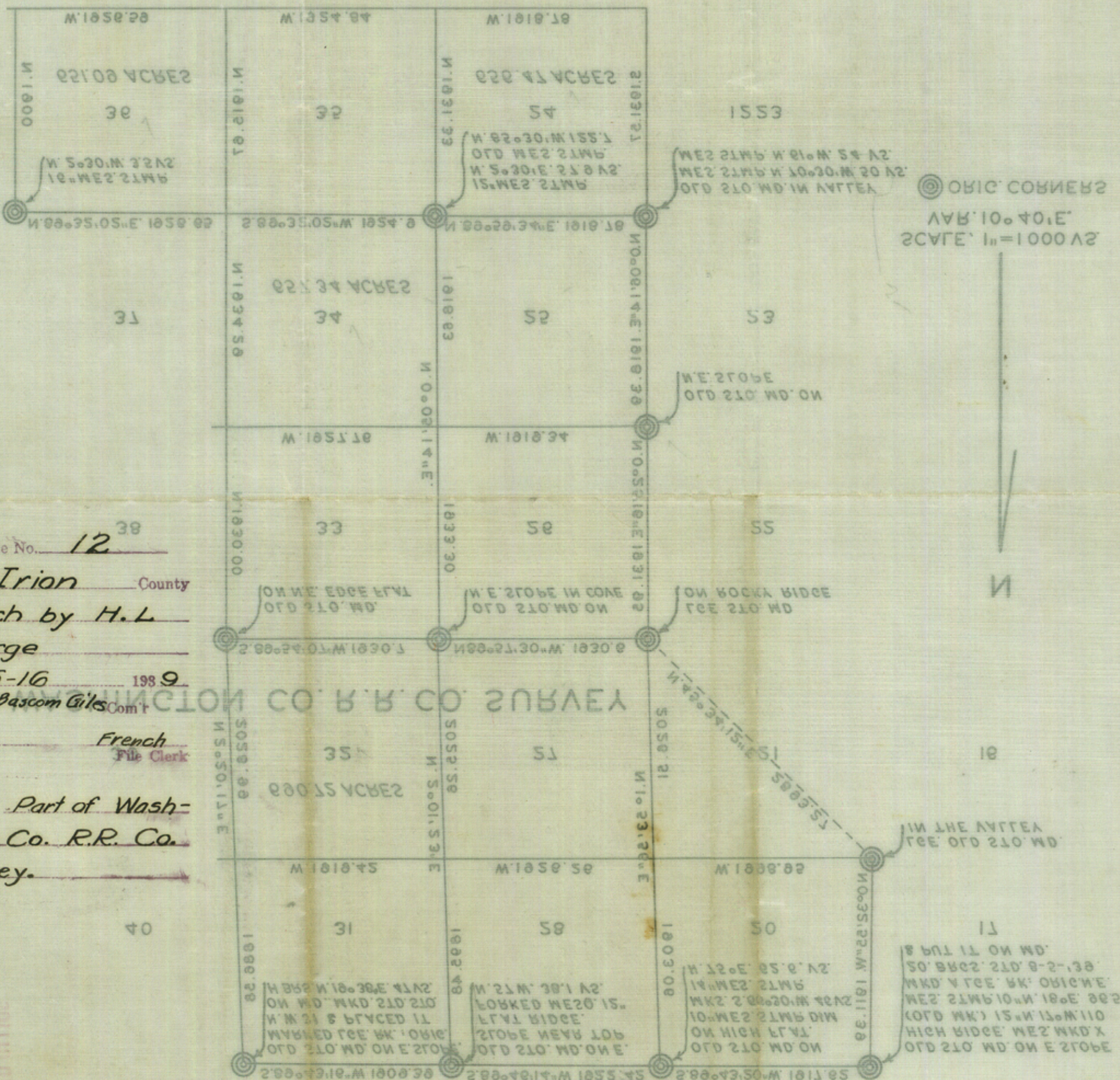


LICENSED LAND SURVEYOR

WITNESS MY HAND THIS 3TH DAY OF MAY 1939
CORRECTLY SHOWS A SURVEY MADE BY ME ON THE GROUND MAY 2.8.9.1939
I, H. GEORGE DO HEREBY CERTIFY THAT THE HEREON MAP

UNIVERSITY OF TEXAS BLOCK 40



Sketch File No. 12
Irion County
 Sketch by H. L. George
 Filed 5-16 1939
Bascom Giles Com'r
French File Clerk

Descriptive: Part of Wash-
ington Co. R.R. Co.
Survey.

LANDS IN IRION COUNTY TEXAS

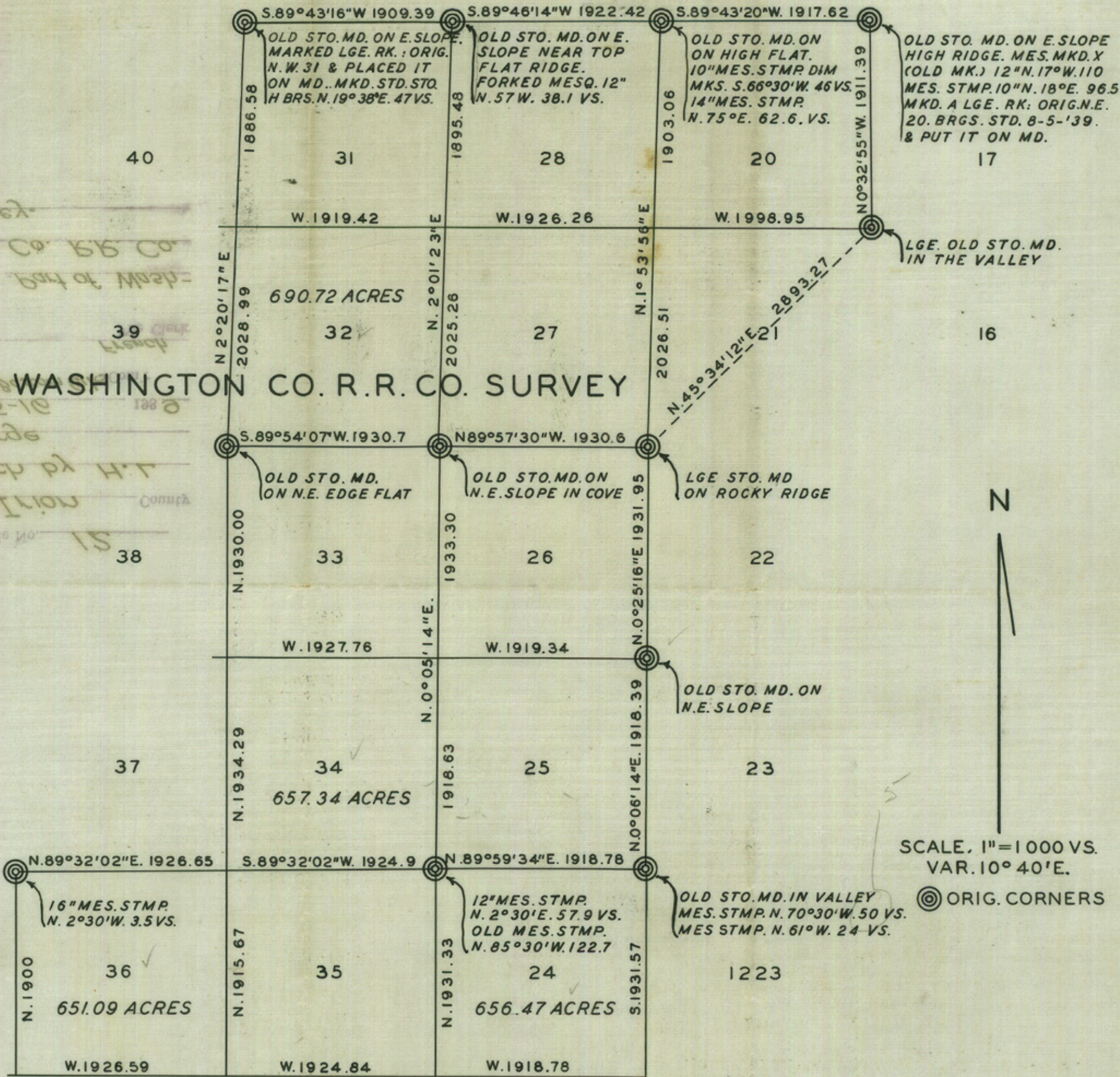
MAY 16 1939
 GENERAL LAND OFFICE

Number 27482

1049

LANDS IN IRION COUNTY TEXAS

41 30 29 19 18



UNIVERSITY OF TEXAS BLOCK 40

I. H. L. GEORGE DO HEREBY CERTIFY THAT THE HEREON MAP
 CORRECTLY SHOWS A SURVEY MADE BY ME ON THE GROUND, MAY 3.6.8.1939
 WITNESS MY HAND THIS 9TH DAY OF MAY 1939.

I. H. L. George
 LICENSED LAND SURVEYOR

counter 27483