

File 1

#

Jack County

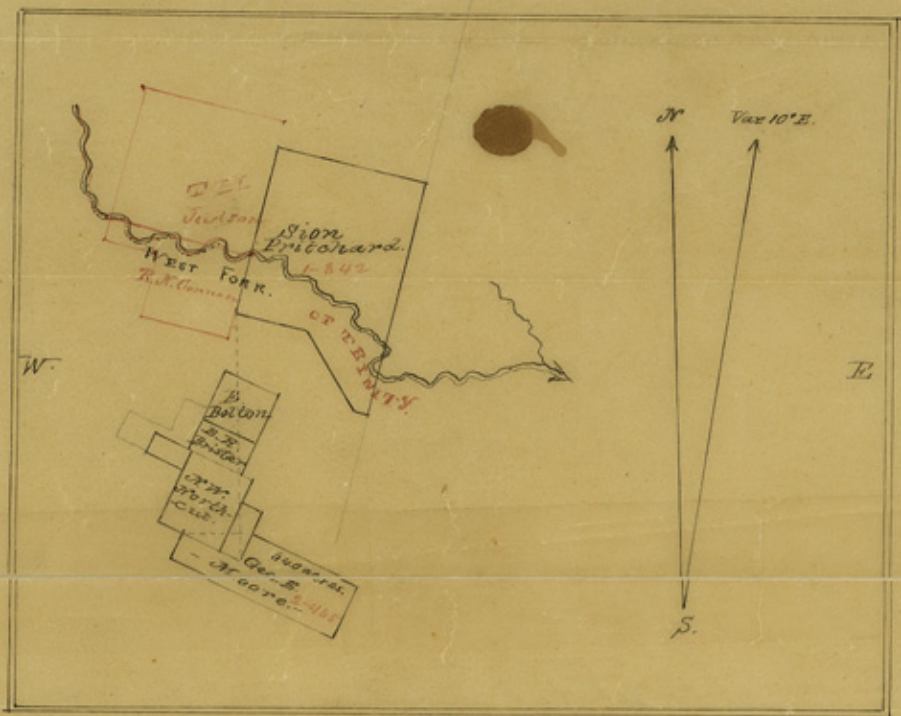
pt. on Map. Oct. 7/56

Rec^d Sept 11th /56

on West Park of Trinity.

about 4 miles N 30° E
from Packsboro.

counter 27499



I R M Allen Dist Sur for Denton Land Dist do hereby certify that the foregoing sketch correctly represents the surveys thereon set forth as taken from the map of my office.

Given under my hand at Altam August 25th AD 1856

R M Allen Dist Sur
D S Dist

Recd Sept 17/56

Robt M. Elgin

Chas. C. C.

52 Office

Counter 27500

18 17 52. 05 4000