

packed over
 over 1000
 around the
 1875
 McCollins

126

I Wesley Callaway Deputy Sur
 of Jack Dist do hereby certify that the
 above sketch represents the true posi-
 tion of the above surveys on the ground
 that the course & distance from the
 N.W. cor of the C. Vandevere to S.E. cor of
 the Jno Holderman is N83W 2300 varas - &
 from same cor of Vandevere to N.E. cor
 of the Overby is S71 1/2 W - 1400 vs
 W. Callaway

Sept. Surveyor Jack Dist.
 I W. A. Benson Surveyor J. Dist.
 do hereby certify that - I have
 examined the foregoing map
 true same correct -
 April 29th 1875
 W. A. Benson
 Surveyor J. Dist.
 by W. S. Mabry
 Special Deputy

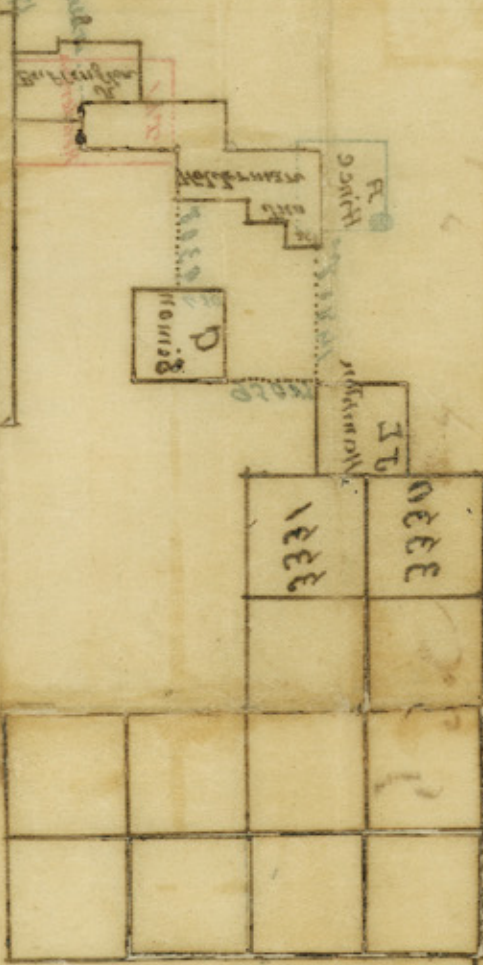
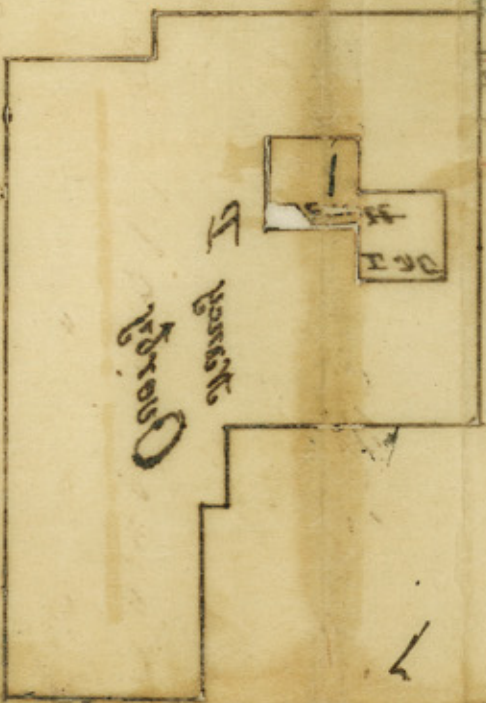
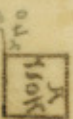
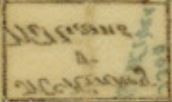
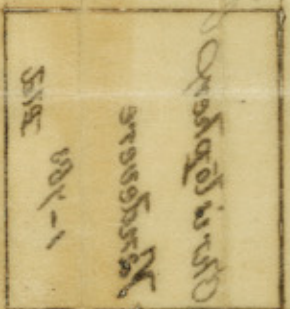
Filed May 27/75
 Rhoads Fisher,
 Clerk,

Filed May 27/75
 counter 27547

W. Callaway's SK.
 Dated Apr. 29. 1875.
 Around the Nancy P
 over by 500, 10 mi. N. of
 Jacksboro.

Jacksboro

W. Callaway
 4/29/75



One of the most important things
 in the history of the country is
 the discovery of gold in California.
 The gold discovery in California
 was made in 1848 by James W. Wicks
 near Colusa, California. The
 discovery of gold in California
 was the beginning of the gold
 rush in California. The gold
 rush in California was the
 beginning of the great westward
 movement of the American people.
 The gold discovery in California
 was the beginning of the great
 westward movement of the
 American people. The gold
 discovery in California was the
 beginning of the great westward
 movement of the American
 people. The gold discovery in
 California was the beginning of
 the great westward movement
 of the American people.

W. Callaway
 4/29/75

27548
 27548