

Files 8 & 9.
Jasper Co.

filed mch. 10. 75.
Gen. Landoff

Files 8 & 9.

Jasper Co.

Houston & Texas
Central R. R.
Surveys
in the Southern
Part of the County.

filed March 10/75.

8 & 9,

Jasper Co

- Sundries -

in southern part of Co
Sketch & Connecting lines

Filed Feb. 25, 1874.

" March 3, 1875.

counter 27773

V
I start from the Bank of the Naches River at the place known
as Richardsons N^W Corner at Richardsons Bluff at a Woodyard
the bearing trees are all cut away, Then East at 60 was a line tree
at 640 was the Jasper Road an old X on each side of the road at 1900 was
Pattillos labor S^E Corner in marshy glade from which a Pine m^kd X
brs N²⁵ W³⁰ was dist. & a Pine brs S⁵ W²⁵ was dist. From here I chain
North 498 was to Pattillos N^E Corner, Pine 1 foot S⁵⁸ W⁷⁴ was & a Pine
2 feet brs N²⁰ E³ was dist. From the S^E Corner of Pattillo it is South
2500 was to Richardsons South line 25 was East of this line is a Corner
on the edge of a Gully (I think it is J^r Taylors N^E Corner) from this
Corner it is ^{East} West 2280 was to the Jasper Road, On Richardsons North
line at 2655 was an old Corner from which a 30 inch Pine brs S²⁶ E² was
& a 2 foot Pine brs N¹⁷ W⁶ was at 2985 a Road at 3240 a Bay Gall
at 3550 Brushy Pine Woods at 3800 was a 2 foot Pin Oak m^kd X
for the 2 mile Post at 4530 leave Pine Woods & enter the big thick
at 5000 was a Pin Oak with 5 Notches at 5702 was 3 Notches
on a Black Gum for 3 Miles at 6000 was six Notches on a small
Pine at 6550 was Bay Gall at 7000 was a Stake with 7 Notches at 7620
was a blazed line running N^E & S traced this line North at 3700 was
a White Oak L³ but not marked any further this is near a
Prarie Marsh & I think is the West line of Section No 75 for T^h N^o R^r
Continued the line East at 8000 was eight notches on a Pine, at 9000
was nine notches on an 8 inch Pine at 10,000 was a Stake & 8 inch Pine
both marked with ten notches at 11000 was a 1 foot White Oak m^kd X,
this is high hammock land, at 11600 was enter Cypress, Pin Oak &
Gum Swamp, I am told by the nearest settlers that this is the
head of Ten mile Creek, at 12,000 was a Holly m^kd XII & Pine 12 hacks
the Timber since leaving the Swamp is Beech, Hickory, Gum, Pine
& Magnolia with thick undergrowth, good land, at 13000 was a White
Bay with 13 notches at 13306 was a White Bay with 7 notches for the
7 miles, at 14000 a Bay 14 notches at 14550 Pine Woods & L³ Pine
20 inch, at 15000 a Pine with 15 notches in flat Pine Woods, at 15600
was enter an old field at 15750 leave field & enter a Bay Gall at
counter 42992

16000 was a 16 inch Pin Oak mkd XVI & a small Pin Oak mkd
with 16 hacks, at 16400 was a House due South & Prairie marsh
North, at 16500 was enter Prairie marsh at 17000 was enter Pine
Woods 2 Pines one each side of the line mkd XVII, at 18000 was
a 20 inch Pine mkd XVIII, at 18960 Bay Gall, at 19000 was a Black
Gum mkd XIX at 19500 was Mr Williams's House hrs North about
200 was at 19950 Cross Nix's ferry Road at 20,000 was a 2 foot Pine
mkd XX & at 20,985 was the Jasper & Newton County line —
Then S 5° W on the County line 540 was to the South line of Section No
2 made for H G & B K R or Dodge & James. Then West on this line at
818 to Corner Stake of Section No 2 & 12 a 10 inch Pine hrs S 9° W 3^{rs} & a 16 inch
Pine N 51° E 6 was mkd X From this Corner South 155 was id a Corner —
made by Armstrong a Stake from which a 16 inch Black Gum hrs West
8^{rs} was & a 10 inch White Bay hrs N 46° E 11 was dist then North on a 3 hack
line at 2015 was a Corner Post a 1 foot Pine N 79° W 3^{rs} & a 2 foot Pine N 52° W
9 was from this Corner a line runs East) continue North at 2035 was
a Post from which a dead Pine 40 inch hrs S 67° E 8 was mkd ^H &
a 14 inch Pine hrs N 36° E 7 was mkd R C, This line does not
run any further North or East I follow a 3 hack line running
West & at 1900 was find a Corner Stake from which a 14 inch Pine
hrs N 83° E 10 was & a 16 inch Pine hrs N 39° W 4^{rs} was both mkd ^H. From
this Corner no line South or West but a 3 hack line runs North, I run
& mark the line West & at 1890 was find a Corner from which a 2 foot
Gum mkd ^H hrs N 56° W 8 was & a 5 inch Holly hrs N 41° E 4 was, from this
Corner a line runs North & South none West I follow the line South
& at 1365 was Cross my line from Richardsons Bluff at 1460 was run
into the Gallery of a House formerly occupied by A Nantz & at 1900 was
Corner in lower edge of the field from which a 20 inch Post Oak hrs
S 37° W 5 was & a 14 inch Post Oak hrs N 37° E 4 was, from this Corner
I find no line South or East but I find a blazed line running
3° N of West this is a connecting line from this Corner to Richards-
ons League line, I could not find Richardsons N E Corner or
no line running into the Big thicket the old Blazed line stopped
counter 27779

at the edge of the thicket. This line cannot be chained with any accuracy without cutting out the line this we done & found one Blazed line runing N & S as described at 7620 was from the River this I James Ingalls Surveyor of Jefferson County do hereby Certify the foregoing to be the true Courses & distances with marks natural & artificial found by us in Jasper County & that I am authoursed to run lines & make surveys in the Southern Part of this County

S. W. Tiphin James Ingalls Surveyor
James Ingalls Chairman

J. C. Reeves, Markers
J. B. Bumstead

Connecting line
South Part
to 8 & 9.

Filed July 25/74
Charles H. H. H.
C. H. H.

Report of work in
Jasper County

[Faint, mostly illegible handwritten text, likely bleed-through from the reverse side of the page.]

of Lazarine & Perish Jr. then $S 9^{\circ} W$ 490 was
for J Deans S E Corner then retrace same
line and measure $N 9^{\circ} E$ 5100 was to the South
line of J. Zocums Survey then West on his South
line 450 was to his S W Corner at this point
there is a large Pine 2 feet diam brs $N 53^{\circ} E$
mkd S.D. & a Pine 30 inch diam brs

$N 40^{\circ} E$ 2 was dist mkd X these marks appear very
old the X is nearly gone from this corner I trace
the lines of Zocums Survey to his N.W. Corner
this is an old mound from which a Pine 16 inch diam
brs $N 35^{\circ} W$ 4 1/2 was dist & a Pine 14 inch diam brs $N 60^{\circ} E$ 4 was
dist both of these trees have been mkd but they are so
much burned that I cannot distinguish the mark
then measure $N 88^{\circ} 50' E$ on an old mkd line 1940
was to a corner from which a Pine 18 inch diam

brs $N 58^{\circ} W$ 8 1/2 was dist mkd
is 2 lines Cross 1 runs N & S the other E & W, at the
N.W. Corner of Zocums Survey there is a line runs
North, continued same course on D Choats North
line 2380 was to a corner from which a White
Oak 16 inch diam brs $N 7^{\circ} E$ 8 1/2 was dist & a White
Oak 11 inch diam brs $S 40^{\circ} W$ 3 was dist mkd
from this corner an old line runs North,

5000 was to corner in an Island from which
a Post Oak 20 inch diam, ^{mkd X} brs $N 73^{\circ} W$ 28 1/2 was dist
this is the only mark I can find, from this corner
North 40 was line tree Red Oak (old mark) 80 was
Prairie 500 was Timber 980 was a corner from
which a Black Gum 9 inch diam brs $N 52^{\circ} W$ 10 was
dist & a White Oak 16 inch diam brs $N 33^{\circ} E$ 1 1/2 was dist
both mkd X from this corner a line runs West
counter 42993

1807
2106
454
4367

957
1869
2014
2026

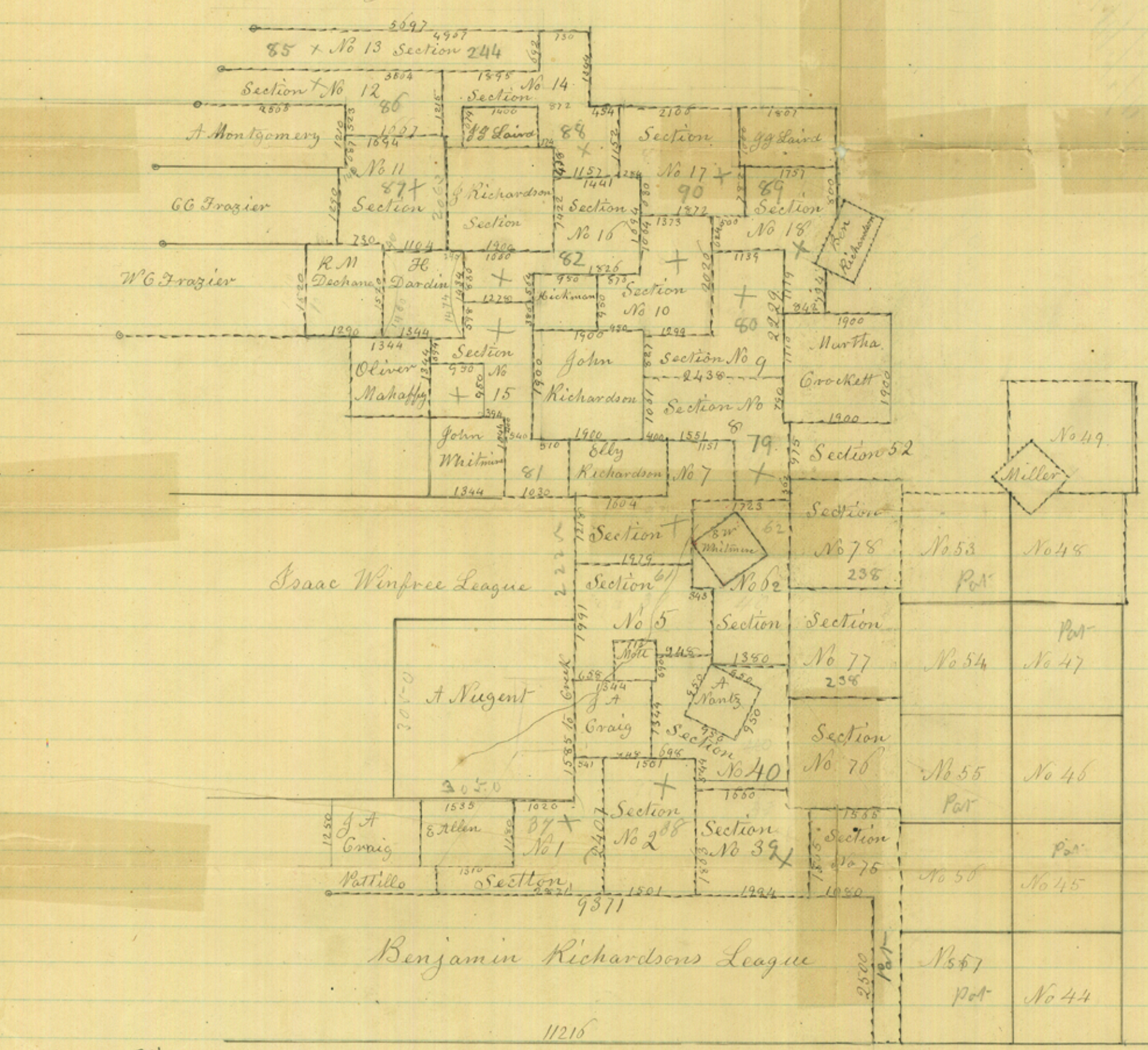
527
887

1104
270
1814
1694
140

1362
53
1411
2042

1900

James Hoggatt



RH

File 8.
Wasper Co.

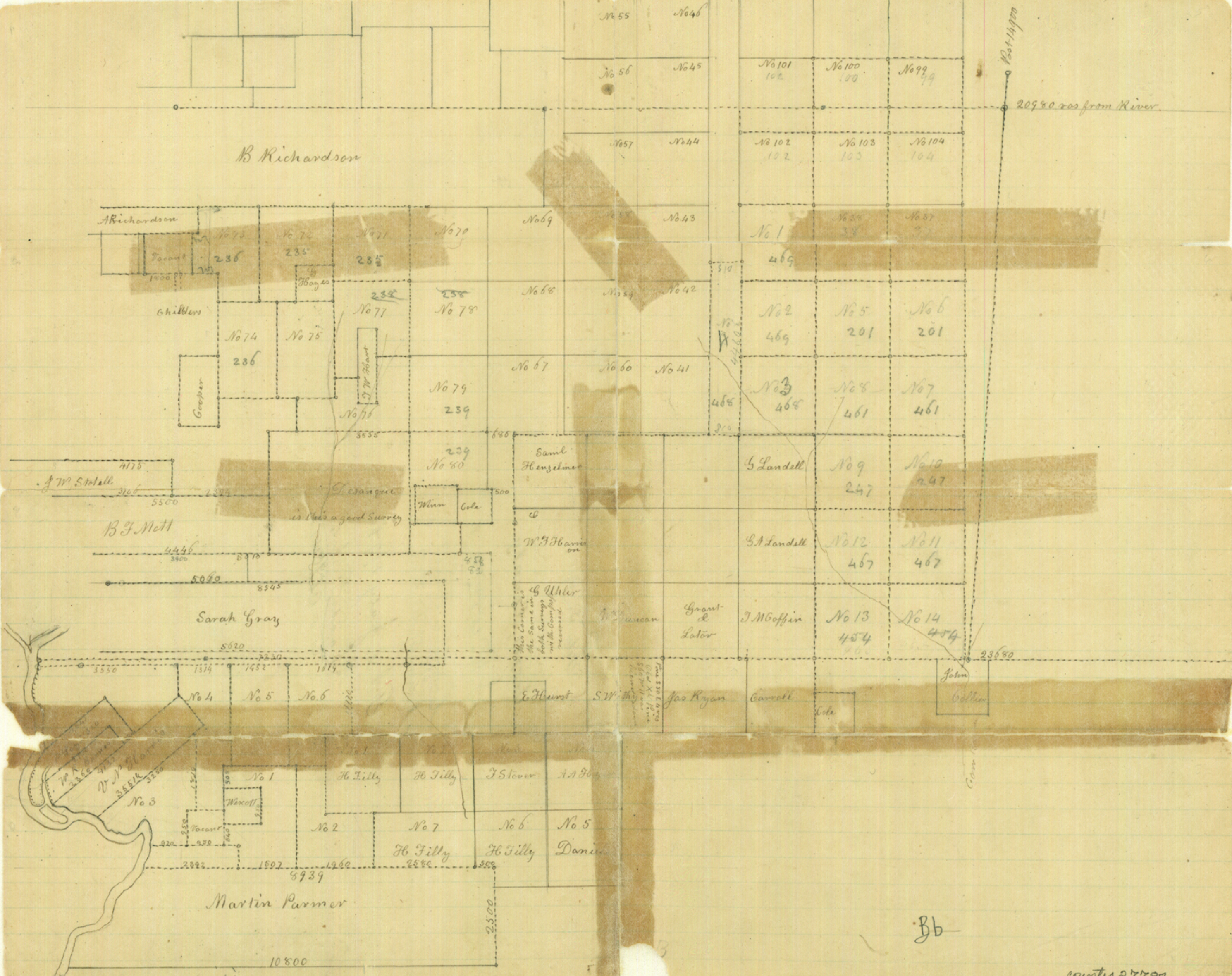
Gasper Plains
Southern Part

Filed Oct 19. / 41
Wasper Co.

RH

41

counter 27783



Bb

File 5-9

Jasper County.

S. W. corner

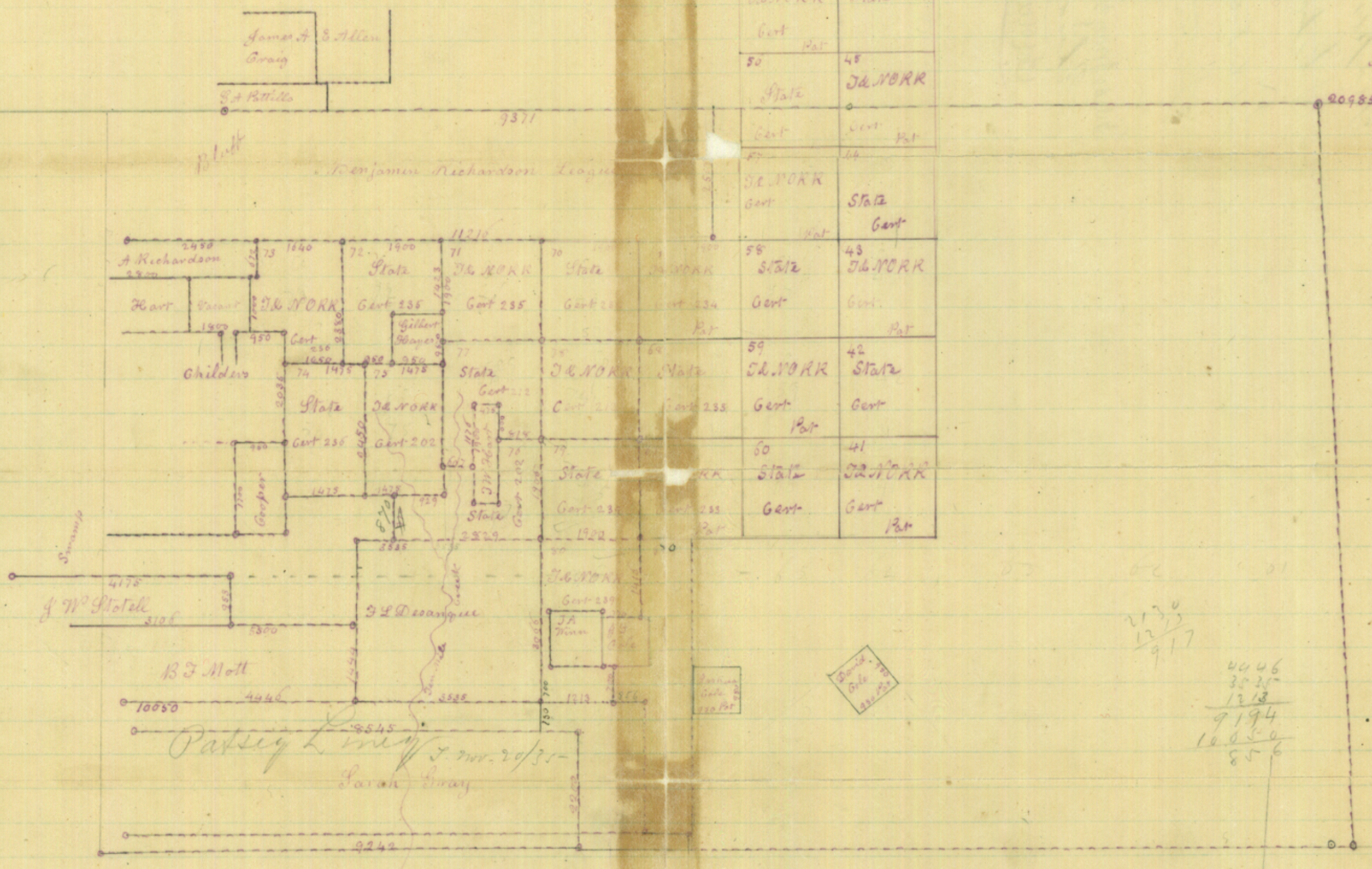
Company connecting
lines Sketch No. 7

Filed July 1/74

Rhoads Fisher,
Chf. CLK.

Bb'

Filed July 14/74



53	J&MORR Pat	46	State
54	State Gert	47	J&MORR Gert
55	J&MORR Gert	48	State Pat
50	State	48	J&MORR
57	J&MORR Gert	44	State Gert
58	State	43	J&MORR
59	J&MORR Pat	42	State
60	State	41	J&MORR
61	J&MORR Pat	40	State

Newton

20985

James & Allen
Gray

S. A. Pettile

9371

Platt

Benjamin Richardson League

A Richardson
2450

Hart

Children

J. W. Stottell

B. F. Mott

Patsy L. ...
Sarah Gray

J. L. Deaneque

John
Gert
Pat

Daniel
Gert
Pat

2130
1213
917

4046
3535
1213
9194
10050
856

aa

2130
1213
917

File 397

Jasper Scrip
Sketch 9

Dix & A. O. 1871

South Part

Filed May 29 1874

Rhoads Fisher

Chapel

counter 27787