

2030

Alpine, Texas, Oct. 8 1923

Hon. J. F. Robison,
Commissioner General Land Office,
Austin, Texas

Dear Sir,

I have just returned from a survey in Mr. Locke's pasture some 8 miles west of Fort Davis, made at the request of Mr. W. O. Grubb, Mr. Locke's Manager. On this survey I found what seems to be a strip of excess or unsurveyed land between Block 224 and the G. C. & S. F. Block on the south.

In my report on a survey made for Mr. A. G. Prude it was shown that surveys 411 & 412 C. & M. R. R. Co. lay north and west of their position relative to sur 469 and 470 as given in the field notes and shown on the County Map.

This error in northing applies also to surveys 410 & 411, and the actual location of survey 409 is found to fit the location of the original marked N. W. cor sur 27 Blk 224.

We connected Thompsons original N. W. 27 with N. W. and S. W. 409, then with original N. E. 665, and then by course and distance, by way of sur 89 and 90 connected with the north line of the G. C. & S. F. Block as located from the original marked corners S. E. & S. W. 683. and the adjacent McCombs pipes on sur 8 T. & P. Blk 1.

This run shows an excess in southing in Blk 224 to reach the G. C. & S. F. Rym north line. We threw this excess south of sur 90 into that school tract, but it also exists south of sur 91, where we found nearly 600 varas between the south line of sur 91 as fixed by the calls for distance on the east and on west lines of sur 90, and the north line of sur 676, 677, 680 G. C. & S. F.

Sur 91 calls for the north line of 676 G. C. & S. F. but as this call was evidently made under a misunderstanding as to the northing of surveys 409, 410, & 665, and adjacent T. & S. L. Ry. surveys, I did not feel warranted in including this excess in sur 91.

I notified Mr. Grubb of the possible existence of this strip, so that Mr. Locke might take what action he deemed best.

You will find further details of the survey which discovered this excess in the report I am forwarding to you today.

Respectfully

R. L. Dod

Licensed Land Surveyor

RECEIVED

OCT 10 1923

Reference to map

counter 27978

EX

Report of progress
in a Resurvey of certain sections of land
in Block 224 T. & S.L.Ry. Co. Jeff Davis Co.
Texas

Hon. J. T. Robison
Commissioner Gen. Land Office
Austin, Texas

Dear Sir,

I would respectfully submit the following report of progress in a resurvey of part of Block 224 T. & S.L.Ry. Co. in Jeff Davis County, which survey we expect to complete North and West to adjacent Blocks next month, and would ask your kind consideration of the matter and your decision and instructions as to the various problems in reconstructing the surveys, so that I can adjust those encountered in this survey and also have your decisions as a guide in the further survey of the Block.

Authority for the Resurvey. Request of Mr. W. O. Grubb for a resurvey of the surveys in question as representing the owner, as Manager of the Locke Ranch west of Fort Davis.

Object of the Resurvey. To determine the actual location on the ground and the acreage of the surveys in Blk 224 owned by Mr. Locke and the location of adjacent surveys or Blocks.

Data for the Resurvey.

County Map of Jeff Davis County, dated 1915.

Field notes of surveys in question from the County Surveyors Records of Jeff Davis Co.

Map and Report of survey made by me for Mr. A. G. Prude, of lands adjacent to the surveys in question.

Preliminary examination of field notes.

The facts developed by the Prude survey showed that the S.W. line of sur 412 C & M. RR. instead of conflicting 279 varas in easting with the north line of sur 469, and 756 varas in southing with the West line of 469, as located by field notes and map, does not, on the ground, touch sur 469, but passes some 315 varas west of it, and that the N.E. cor sur 412 is actually some 397 varas north of the N.W. cor of sur 469, locating the two surveys from their own original corners on the ground.

As the surveys in Block 224 adjacent to surs 412 and 469 call for these surveys in their conflicting position, the field notes of these surveys in Blk 224 require adjustment based on the true location of 412 and 469.

The error in the supposed location of these older surveys 412 and 469, suggest possible errors in other surveys made by the same surveyors at about the same time. Hence it would seem necessary to locate these senior surveys from their own corners, or holding calls, on the ground and compare their true relative position with that called for in the field notes of surveys in Blk 224 and on the Map.

Looking over the field notes of these senior surveys in Blk 224 we find that sur 412 calls for a marked S.E. and sur 411 a marked S.W. corner, which latter corner is called for 750 varas N 17° E from a marked S.E. cor of sur 409.

Sur 409 calls also for a marked N.W. corner.

Sur 340 calls for a marked S.W. corner tied to the N.W. cor sur 409, and also calls for a marked N.W. corner. Mr. Thompsons original field notes for sur 28 Blk 224 call for marked corners on lines of 340 and calls for or ties to the marked N.W. cor sur 340.

Sur 407 calls for a marked corner on the west line of survey 339.

We also find a marked corner called for at N.E. cor sur 665, and in Pattersons resurvey field notes he ties this corner to the original S.W. cor sur 409.

We note that survey 16 Blk 224 calls for N.E. 469, and S.W. 13, a marked corner, and sur 13 calls for a marked S.E. corner. Sur 14 calls for sur 13 on the south but runs north to the S.E. line sur 668.

Sur 15 calls for sur 14, sur 16 and S. cor sur 668.

Surveys 667, 668, are senior surveys and apparently have no calls of their own for connection with other surveys but depend for location on a marked east corner of sur 667.

It would appear from the above calls that the logical method of survey would be to locate the marked corners of these senior surveys on the ground and from them the actual position of these senior surveys, and the surveys in Blk 224 T. & S.L. would be run from their own marked corners or from their calls

for marked lines or corners of these senior surveys, and would have to conform to the lines and corners of such senior surveys where conflicts arose or valid calls for the older surveys would change course and distance of the calls in the field notes of the T. & S.L. surveys.

History of the Resurvey.

We went on the ground to the east corner of sur 667, shown us by Mr. Sproul as the rock mound pointed out to him by Mr. Thompson many years ago, as the east corner of sur 667 and from which he had run for them S 45° W two miles and made a rock mound for South cor sur 668, at which corner they had set their fence, still standing.

We found a rock mound from which an old marked bearing oak stood S 63° W 10 varas, another large oak stood N 2° W 34, scarred but no plain axe mark, the call is N 3° W 35, and there may have been another oak at that point. A stump of a pine tree, some 8' high and 24" dia, burnt, stood as called for in field notes.

This pine was unusually large, and standing in the oak grove was in itself good evidence of the corner and taken together with the marked oak and the other evidence satisfied me that this was the original east cor sur 667.

From this corner we ran a traverse to a point S 45° W 3800 varas, passing over the rock mound at the fence corner and on 14 varas beyond. As it was purely a case of course and distance we set a mound at our 3800 vara point for South cor sur 668.

We now went to the S.W. cor sur 14 which we had set from original S.W. 14, ran north 218 varas to N.E. 16 B set east of its patented N.W. marked corner, on north 1136 varas, 1354 varas in all to a point on the S.E. line sur 668, which point was 679 varas N 45° E from our south cor sur 668 as above located.

This would be the N.W. cor sur 14 and the initial point for sur 15 under its field note calls for South corner 668 and N.W. 14. The S.E. cor sur 15 would be the N.E. cor 16 under its call for sur 16, but the length of the east line of 15 would be 1136 instead of 1052, an excess of 84 varas. (For our location of N.W. 16 see report Aug. 18, 1922)

We set a mound for N.E. 15 in S.E. line 668 at N.W. 14, and ran S 45° W 553 vrs as called for and set small mound, on 126 varas 679 varas in all to our south corner of 668,

Thence we ran N 45° W 1575 vrs as called for, but as this call starts at a point 126 varas N 45° E of the point thus reached, we ran North 89 varas and east 89 varas and made small mound to mark point 1575 varas N 45° W from small mound set on S.E. line 668 at 553 varas S 45° W of the beginning point of 15.

From this small mound we ran West, at 178 varas set mound on S.W. line sur 668 1701 varas N 45° W from its south corner, for our N.E. 15, on 306 varas west we set mound for N.W. 15, 89 varas north of a point 397 varas west of a point on S.W. line sur 668 1575 varas N 45° W from the South cor sur 668, as called for in field notes of survey 15.

From this N.W. 15 we ran south 1178 and made a corner on a rocky ridge. It would be very difficult to run west from this point as the line would pass over a steep Mt.

We had already located the north line of 16, finding it to run from the N.E. corner as above described, west 2895 varas to a point in north line 412 945 varas N 43° 30' W from N.E. 411. This under our construction would be the south line of sur 15. The call is west 2929 vrs but the line must stop with the line of 412, The call then is N 43° W (43° 30') 390 varas, from this point north 398 and east 1174 will close the survey.

It is to be noted that the westing of the south line is 34 varas short and it might be better to run on the 34 varas then turn N 43° 30' W 390, then north and east to close. This would make the run east 1208 instead of 1174. The original call is 1308. We did not mark the common corner of 15 & 26 on the north line of 412, waiting your instructions.

The above construction of 15 includes 579 acres while the Patent calls for only 553, I believe.

We now undertook to locate 26, 27, 28,

We were shown a flat rock lying 648 vrs south and some 54 varas west of our N.W. 15, said to have been set or accepted by Mr. Merrill as the N.W. cor 26, and that he had reached this point by running from a large rock mound which he said was the N.W. corner of 26.

To test this we started at the flat rock and ran west through a valley and over a low ridge and at 2600 varas reached a point about 2 varas south of a large rock mound on the west slope of a hill, but found no marks on rocks in the corner.

We turned south from this large rock mound and ran 1609 varas and reached a point about 5 varas west of a small rock mound said to have been set for the

for the S.W. cor sur 26.

We turned west and ran 1670 varas to a point on the west slope of a bare hillside, no trees anywhere near, and no stumps or young growth to show there had ever been any trees there, and no rock mound or corner. We should have reached the N.W. cor sur 27 which is described as a rock mound and two bearing trees near by.

We found this corner 372 varas north and 74 varas west. There was a large old rock mound, sunk in the ground, the east bearing was plainly marked and old, and the stump of the north bearing was found proper course and distance from the corner.

To further test this corner we ran N 17° E 704 varas and reached a lone rock lying on the south slope of low ridge, from which a large oak bears S 5° E 226 and a stump of another large oak bears S 4° E 225 and a third smaller stump between the two trees, making the three trees marked X called for, and S 71° W 63 varas we found a very old rock mound. This established the two corners as the original Thompson corners of 28 on which 26, 27, and 28 depend.

Mr. Grubb and Mr. Prude who were with us and had seen the lines of these surveys run, and had built fences according to those lines, said they had never seen these Thompson corners and had never run from them or hunted for them.

Returning to the S.W. cor 28 above described we ran S 17° W 1196 varas to find Thompsons marked corner for 27 at S.E. 340, where he calls for two Post oak (or white oak) bearings.

We did not find these bearings, but the point reached was at the south foot of a slope near a second growth of white oak with many stumps of older trees which had been cut or burnt down.

We decided to run East from N.W. 409 to look for this corner, but first connected S.W. 28 with N.W. 409 we ran a travers S 59° 15' W 1456 and S 80° W 300 to a large old rock mound on left bank of Limpia, from which a large oak stump some 7' high marked X bears S 67° W 97, another large stump stood N 66° W 160, but this did not fit the call and did not appear to have been marked, though the bark was gone. This is a well known corner and fits S.W. 28 with an excess of 18 varas southing.

From this N.W. 409 we ran S 73° E and intersected our line from S.W. 28 at 1250 varas from N.W. 409 and 1214 varas from S.W. 28. Here we found an old rock mound in the draw about 2 varas east of our point but the wash in the draw made it difficult to absolutely identify it as artificial. We ran from it S 20° 30' E 38 varas and found the ground at that point covered with the scattered chips and bark of a post oak cut years ago, but could not locate the stump. I think this was Thompsons corner but finding no proof we set our corner at the intersection of the two lines and marked new bearing.

Returning to N.W. 409 we ran N 73° W 650 varas and set a mound for S.W. 340 and marked a P.O. 10" S 6° 40' W 18 varas. The call is for a tree marked X. The nearest tree was the one we marked as a bearing. It was scarred up and one side partly rotting, but we could find no axe mark on it. The call for bearing is Agua Blanco Spring N 30° W 650.

We went to the spring which Mr. Grubb told me had moved up stream since he first knew it. The spring is on the north side of the creek and runs into it

Starting at the point where the spring was when Mr. Grubb first saw it we ran S 30° E 650 and reached a point 52 varas N 73° W from our corner.

Later on when running the north line of sur 340 we found it 1939 varas between corners. I think our S.W. 340 should be moved N 73° W 39 varas to correspond with the north line, which would bring it pretty close to the call from the spring, only 13 varas off, which might be in the change in location of the spring itself.

The south corners of 27 and the east line of 27 and 26 would conform to the location of survey 411 and 412, so we returned to our S.E. 340 and ran a traverse round the Mt. to the old rock mound on right bank of Limpia Creek recognized as the original S.W. 411 (the oak bearing is now gone) finding it to be 1135 varas S 17° W and 646 varas S 73° E from our S.E. 340. But our east line of ~~xxxx~~ 340 is 18 varas long, and the 1135 to S.W. 411 is 15 short of call.

We ran from this S.W. cor sur 411 S 17° W 750 varas and reached a point 4 vrs west of the big old oak marked X for the S.E. 410. Later, on running S 17° W to h top of the hill we could see both these corners and S.W. 411 showed to be 4 vrs west of the line of 409.

At S.W. 411 we hunted for the Thompson south corners of sur 27 but did not find them. We found a recent rock mound with an oak N 60° E 22 vrs, but the tree was not marked and the mound was some 125 varas too far west.

We note that in the field notes of sur 27, after leaving the P.O. corner at S.E. 340, Mr. Thompson calls to run S 73° E 957 vrs instead of 650 vrs, then his call is S 17° W 970 varas, which would stop 180 short of S.W. 411 and then runs east 125 to reach the west line of 411 and then runs up the west line of 411

and 412 3585 varas. I can not understand his 957 vara call, and to follow it would throw 27 way out into 411 & 412, I did not go out east to look for the south corners of 27 as we could not run over the west line of 411 with survey 27.

We now returned to the N.E. cor 340 or Thompsons cor of 28 and ran S 73°W and at 1939 varas found a large old rock mound on east side of a draw and S 40°W about 285 found Tom Murphy's blazed oak. It had a ring 10" to 12" wide blazed all the way round it.

This old mound was 14.5 vrs to the left of our line requiring S 73°25'W ~~19~~ 1939 varas to reach it from Thompsons corner, N.E. 340.

East of this old mound N.W. 340 were three large rocks scattered on the ~~sk~~ slope of the draw, one of them was S 73°25'E 19 varas, on looking at ~~the~~ another we found the X cut on the under side and replaced the two with the one at course and distance called for for Thompsons corner of 28.

From these three rocks, one marked X, we ran north 386 varas and reached a lone rock some 2' long and 10" x 5" marked X at the smaller end, as called for at N.W. 28.

Thence we ran east 160 varas and reached a rock mound on a low ridge with a cap rock plainly marked "T", this rock had fallen off to one side.

We had now found and identified a chain of 5 (perhaps 6, the P.O. corner) of Thompsons original marked corners which would definitely fix his location of 26, 27, 28.

There was one more point to decide before I could put in 26, 27, 28, did these corners of 28 conflict with the Thompson corners north on Sbl Blk 311, & Nbl Blk 224.

To determine this we ran N 45°W 2688 varas from the cap rock "T" corner S.W. 30 to S.W. 38, marked that point and turned north and ran 3849 varas to a point 36 varas east of N.W. corner of sur 37 a rock set in the ground mkd "X" both bearings O.K. for Thompsons calls at N.W. cor sur 37.

We now returned to the S.W. cor sur 28 and at 1670 varas east made mnd for S.E. cor 28 and S.W. 28. Ran on east 831 varas and made a mnd for N.E. 27 and a south corner of 26, in the west line of sur 412. To check on this line we ran S 46°30'W to the top of a ridge from which we could see the line to the S.W. cor 411. We then ran from this N.E. 27 N 46°30'E 260 varas and put in N.W. cor 412.

We did not run from this point S 43°30'E 620 as we are waiting your instructions as to this corner of 26 and 15 (vid supra)

From S.W. 26 we set N.W. 26 and N.E. 28 1609 varas north, and N.E. 26 at 2620 varas east of that point and 304 varas north of our N.W. 15 above described.

We ran the east line of sur 27 from the above described N.E. corner, due east of marked N.W. cor 2501 varas, S 46°30'W 3540 varas to the S.W. cor sur 411 but could not run on to the call 3585. We ran the west line of 27 N 17°E 1135 to N.E. 409 to intersect line S 17°E from the P.O. corner.

This gives only 543.9 acres to 27, instead of 640, but it can not be helped as it can not go north of its own N.W. corner and the other sides are boundaries of the older adjacent surveys.

We now returned to N.W. cor sur 409 and ran S 17°W and at 408 varas set mnd for S.E. 87 & N.E. 88.

We reached this point by balancing field notes of 87. We note that 87 calls for the S.E. line 407 to run N 60°E instead of N 50°E, but the course and distance of the south line of sur 407 is fixed by a well marked corner on west line 339, and 339 is well fixed from the N.E. and S.E. corners, the call S 73°E 2539 should read 2550, and then to balance survey S 17°W 408.

On S 17°W 1402, 1890 in all from N.W. 409 we reached a rock mound on edge of a ravine. It was old and stood on a grassy slope, no other mounds of rock near it, and had evidently been placed there by some one.

The call for S.E. 88 is 742 varas S 17°W from this S.W. cor 409, which makes the east line of 88 2224 instead of 2324.

Mr. Patterson calls for the N.E. cor sur 665 as S 70°W 1000 varas from the S.W. cor 409.

From this old rock mound on edge of ravine we ran S 70°W 1000 varas to the top of a ridge where we reached a large old rock mound with a large burnt cedar standing as called for at the N.E. cor 665. From this rock and we ran N 73°W over a high Mt and across a canyon 1900 varas and set mnd for N.W. cor 665.

Turned N 17°E and ran 413 varas and set a mnd on west side of deep draw for N.W. cor 666. The field notes imply that the north line of 666 is 1980 vrs which it can not be, if it runs east and west, for there is no call to extend the width of 665 and 666 over 1900 varas from original N.E. 665.

From this N.W. 666 we ran west 1714 varas as called for ~~in~~ for N.W. 89, and made mnd. Thence we ran south 2769 varas and made mnd for S.W. 89. The call east for south line of 89, is 1031 but it must be 1039 to reach S.W. 665.

This S.W. 89 is also by the field notes the N.W. corner of survey 90. The wet

The west line of 90 calls for 794 varas but this will not reach the north line of the G.C. & S.F. Blk.

To determine where this line was, we went as before to the S.E. cor sur 683 GC&SF.Ry.Co. where we found McCombs pipe set for N.E. cor sur 8 T. & P. Blk 1, and a small recent rock mound on an old fence line. Careful search failed to find stumps that would fit the calls Glenn gives for Live oaks from this corner. There was an old dirt tank about 250 varas west of this mound and the low hill on the south of the tank had a number of stumps of small 6" to 8" trees, but none fit the calls as before reported.

Mr. Merrill had shown me this rock mound as one Thompson had shown him years ago, but he had not seen it in some time and did not remember that there were any bearings called for and had never seen any bearing trees at that point.

I preferred to take McCombs call as a clearer identification of Glenn's line. From the S.E. corner of sur 683 located from McCombs pipe we ran N 45° E 2688 varas and marked N.E. 682, ran north 1900 varas and marked N.W. 681. This was the line between Mr. Locke and Mr. Jones, and Mr. Grubb and Mr. Jones were both with us on the survey.

Then from N.E. 681 we ran west 1900 and on 312 to intersect our line from the north. Finding that the course set from the bearing of the Glenn line was 35' to the right of the course of the Thompson line as checked on his 28 corners and on the run to N.E. 665, and on the cedar brg.

Running north at 431 varas we reached our end at 794 varas south of S.W. 89, making the total southing of the west line of sur 90 1225 varas instead of 794 varas.

Looking over the field notes of sur 91, we find errors and impossible calls, but the point 31 varas N 17° E from S.E. 665 is a definite call. Thence N 17° E 1478 varas is O.K. to reach S.W. 88, but the field notes call this 1484.

Thence east 940 to S.E. 88, absolutely impossible as shown above, must be east 838.

S 17° E 1142, again an impossible call to reach S.W. cor of 410, must run 1158 to reach the corner. Thence S 73° E 2218 to S.E. 410 is the next call, but we can not stretch a mile to 2218 varas. But the S.E. cor of 410 is a definite fixed point and we marked it on the ground 1900 varas S 17° W from the big oak corner.

Thence East 1124 can be run. Thence South 480 can be run and we ran it, but the call west 3262 varas must be reduced to 2856, and the call for west line north 802 reduced to north 729 and the call west 1024 reduced to 1016 varas the call given in sur 90.

In other words the fixed points S.E. 665, S.W. 88, S.E. 88, S.W. 410, and S.E. 410 must fix the north line of sur 91, and the call east 1124, and south 480 can be followed, but the two west calls must be reduced to bal the survey.

As a matter of convenience we ran from S.W. 410 across sur 91 to N.E. 677 and one mile south as division line between Mr. Locke and Mr. Prude.

This location of N.E. 677 fitted our former run to locate S.E. cor sur 92 on the nbl sur 676.

The result of the corrections necessary in the field notes of sur 91, reduce the acreage to 540.6 acres instead of 640, unless the call for the north line of 676 is considered a holding call. If so, then by extending sur 91 south to the north line of the GC&SF Block, it will contain 835 acres.

Please instruct as to where the south line of sur 91 should be placed under its calls.

If it remains where I show it on the plat then I presume the excess between it and the G.C. & S.F. Blk will be unsurveyed land subject to sale and I have notified Mr. Locke of its existence and advised him to write you relative to the matter.

I found it exceedingly difficult to satisfactorily correct the surveys in Blk 224, but I was very careful in making the connections on the ground so that I believe you can rely on the facts given in this report as the basis of your decision in the premises.

The intention is to continue the survey to the line of Blk 5 GR&SA and WJG 1, and north to 311, and I hope to have your instructions on the matters brought up in this report as a guide for the further work. Any suggestions or comments on method or plan of resurvey will be thankfully received.

If there are any points requiring further explanation, or further facts required please let me know.

Respectfully

R. S. Dod

Licensed Land Surveyor

counter 27983

Ex 5

Jeff Davis Co.
Surveyors Report
and Connection
filed Oct 10-1923
J. T. Royce Com.
H. T. McDonald
Clerk

Respectfully
J. T. Royce
Surveyor
EX V
County 27984

Received please let me know.

If there are any points remaining further explanation, or further facts comments or wishes or plan of survey will be thankfully received. I brought up in this report as a guide for the further work. Any suggestions or who I, and north to 311, and I hope to have your instructions on the matters. The intention is to continue the survey to the line of 311 & 322 and decision in the premises.

I believe you can rely on the facts given in this report as the result of your decision. I found it exceedingly difficult to satisfactorily connect the survey to the section. I found it exceedingly difficult to satisfactorily connect the survey to the section.

It is my belief that the survey will be unimpaired and subject to sale and I have under the call.

Please instruct as to where the south line of 311 should be placed.

The north line of the 322 Block, it will contain 322 acres. The result of the corrections necessary in the field notes of 311, 322, 323, 324, 325, 326, 327, 328, 329, 330, 331, 332, 333, 334, 335, 336, 337, 338, 339, 340, 341, 342, 343, 344, 345, 346, 347, 348, 349, 350, 351, 352, 353, 354, 355, 356, 357, 358, 359, 360, 361, 362, 363, 364, 365, 366, 367, 368, 369, 370, 371, 372, 373, 374, 375, 376, 377, 378, 379, 380, 381, 382, 383, 384, 385, 386, 387, 388, 389, 390, 391, 392, 393, 394, 395, 396, 397, 398, 399, 400, 401, 402, 403, 404, 405, 406, 407, 408, 409, 410, 411, 412, 413, 414, 415, 416, 417, 418, 419, 420, 421, 422, 423, 424, 425, 426, 427, 428, 429, 430, 431, 432, 433, 434, 435, 436, 437, 438, 439, 440, 441, 442, 443, 444, 445, 446, 447, 448, 449, 450, 451, 452, 453, 454, 455, 456, 457, 458, 459, 460, 461, 462, 463, 464, 465, 466, 467, 468, 469, 470, 471, 472, 473, 474, 475, 476, 477, 478, 479, 480, 481, 482, 483, 484, 485, 486, 487, 488, 489, 490, 491, 492, 493, 494, 495, 496, 497, 498, 499, 500, 501, 502, 503, 504, 505, 506, 507, 508, 509, 510, 511, 512, 513, 514, 515, 516, 517, 518, 519, 520, 521, 522, 523, 524, 525, 526, 527, 528, 529, 530, 531, 532, 533, 534, 535, 536, 537, 538, 539, 540, 541, 542, 543, 544, 545, 546, 547, 548, 549, 550, 551, 552, 553, 554, 555, 556, 557, 558, 559, 560, 561, 562, 563, 564, 565, 566, 567, 568, 569, 570, 571, 572, 573, 574, 575, 576, 577, 578, 579, 580, 581, 582, 583, 584, 585, 586, 587, 588, 589, 590, 591, 592, 593, 594, 595, 596, 597, 598, 599, 600, 601, 602, 603, 604, 605, 606, 607, 608, 609, 610, 611, 612, 613, 614, 615, 616, 617, 618, 619, 620, 621, 622, 623, 624, 625, 626, 627, 628, 629, 630, 631, 632, 633, 634, 635, 636, 637, 638, 639, 640, 641, 642, 643, 644, 645, 646, 647, 648, 649, 650, 651, 652, 653, 654, 655, 656, 657, 658, 659, 660, 661, 662, 663, 664, 665, 666, 667, 668, 669, 670, 671, 672, 673, 674, 675, 676, 677, 678, 679, 680, 681, 682, 683, 684, 685, 686, 687, 688, 689, 690, 691, 692, 693, 694, 695, 696, 697, 698, 699, 700, 701, 702, 703, 704, 705, 706, 707, 708, 709, 710, 711, 712, 713, 714, 715, 716, 717, 718, 719, 720, 721, 722, 723, 724, 725, 726, 727, 728, 729, 730, 731, 732, 733, 734, 735, 736, 737, 738, 739, 740, 741, 742, 743, 744, 745, 746, 747, 748, 749, 750, 751, 752, 753, 754, 755, 756, 757, 758, 759, 760, 761, 762, 763, 764, 765, 766, 767, 768, 769, 770, 771, 772, 773, 774, 775, 776, 777, 778, 779, 780, 781, 782, 783, 784, 785, 786, 787, 788, 789, 790, 791, 792, 793, 794, 795, 796, 797, 798, 799, 800, 801, 802, 803, 804, 805, 806, 807, 808, 809, 810, 811, 812, 813, 814, 815, 816, 817, 818, 819, 820, 821, 822, 823, 824, 825, 826, 827, 828, 829, 830, 831, 832, 833, 834, 835, 836, 837, 838, 839, 840, 841, 842, 843, 844, 845, 846, 847, 848, 849, 850, 851, 852, 853, 854, 855, 856, 857, 858, 859, 860, 861, 862, 863, 864, 865, 866, 867, 868, 869, 870, 871, 872, 873, 874, 875, 876, 877, 878, 879, 880, 881, 882, 883, 884, 885, 886, 887, 888, 889, 890, 891, 892, 893, 894, 895, 896, 897, 898, 899, 900, 901, 902, 903, 904, 905, 906, 907, 908, 909, 910, 911, 912, 913, 914, 915, 916, 917, 918, 919, 920, 921, 922, 923, 924, 925, 926, 927, 928, 929, 930, 931, 932, 933, 934, 935, 936, 937, 938, 939, 940, 941, 942, 943, 944, 945, 946, 947, 948, 949, 950, 951, 952, 953, 954, 955, 956, 957, 958, 959, 960, 961, 962, 963, 964, 965, 966, 967, 968, 969, 970, 971, 972, 973, 974, 975, 976, 977, 978, 979, 980, 981, 982, 983, 984, 985, 986, 987, 988, 989, 990, 991, 992, 993, 994, 995, 996, 997, 998, 999, 1000.

This location of N.E. 34V fitted our corner run to locate S.W. cor 33 on and one mile south as division line between Mr. Locke and Mr. Fudge. As a matter of convenience we ran from S.W. 410 across 311 to N.E. 34V as followed, but the two west calls must be reduced to 311 the survey.

In other words the fixed points S.E. 322, S.W. 322, S.E. 410, and S.E. 410 varies the call given in 30. The north line of 302 reduced to north 322 and the call west 402 reduced to 1010 but the call west 322 varies must be reduced to 322, and the call for west corner.

Thence East 1184 can be run. Thence South 480 can be run and we ran it, fixed point and we marked it 30 the ground 1800 varies 1184 from the pick oak we can not stretch a mile to 3218 varies. But the S.E. cor of 410 is a definite 1188 to reach the corner. Thence S.W. 3218 to S.E. 410 is the next call, but

S.W. 3218, again an impossible call to reach S.W. cor of 410 must run 1188. Thence east 940 to S.E. 322, absolutely impossible as shown above, must be east

looking over the field notes of 311, we find errors and impossible of 322 varies.

S.W. 322, making the total reaching of the west line of 311 at 302 varies instead of 322 varies.

Running north at 431 varies we reached our end at 302 varies south of 322 and on the run to S.E. 322, and on the corner pick.

322 to the right of the course of the Thompson line as checked on his 322 core the north. Finding that the course set from the bearing of the claim line was then from N.E. 321 we ran west 1800 and on 311 to intersect our line from us on the survey.

line between Mr. Locke and Mr. Jones, and Mr. Fudge and Mr. Jones were both with varies and marked N.E. 322, then north 1800 varies and marked N.E. 321. This was the from the S.E. corner of 311, we ran west 1800 and on 311 to intersect our line from

any part of the survey. It is my belief that the survey will be unimpaired and subject to sale and I have under the call.

Please instruct as to where the south line of 311 should be placed. The north line of the 322 Block, it will contain 322 acres. The result of the corrections necessary in the field notes of 311, 322, 323, 324, 325, 326, 327, 328, 329, 330, 331, 332, 333, 334, 335, 336, 337, 338, 339, 340, 341, 342, 343, 344, 345, 346, 347, 348, 349, 350, 351, 352, 353, 354, 355, 356, 357, 358, 359, 360, 361, 362, 363, 364, 365, 366, 367, 368, 369, 370, 371, 372, 373, 374, 375, 376, 377, 378, 379, 380, 381, 382, 383, 384, 385, 386, 387, 388, 389, 390, 391, 392, 393, 394, 395, 396, 397, 398, 399, 400, 401, 402, 403, 404, 405, 406, 407, 408, 409, 410, 411, 412, 413, 414, 415, 416, 417, 418, 419, 420, 421, 422, 423, 424, 425, 426, 427, 428, 429, 430, 431, 432, 433, 434, 435, 436, 437, 438, 439, 440, 441, 442, 443, 444, 445, 446, 447, 448, 449, 450, 451, 452, 453, 454, 455, 456, 457, 458, 459, 460, 461, 462, 463, 464, 465, 466, 467, 468, 469, 470, 471, 472, 473, 474, 475, 476, 477, 478, 479, 480, 481, 482, 483, 484, 485, 486, 487, 488, 489, 490, 491, 492, 493, 494, 495, 496, 497, 498, 499, 500, 501, 502, 503, 504, 505, 506, 507, 508, 509, 510, 511, 512, 513, 514, 515, 516, 517, 518, 519, 520, 521, 522, 523, 524, 525, 526, 527, 528, 529, 530, 531, 532, 533, 534, 535, 536, 537, 538, 539, 540, 541, 542, 543, 544, 545, 546, 547, 548, 549, 550, 551, 552, 553, 554, 555, 556, 557, 558, 559, 560, 561, 562, 563, 564, 565, 566, 567, 568, 569, 570, 571, 572, 573, 574, 575, 576, 577, 578, 579, 580, 581, 582, 583, 584, 585, 586, 587, 588, 589, 590, 591, 592, 593, 594, 595, 596, 597, 598, 599, 600, 601, 602, 603, 604, 605, 606, 607, 608, 609, 610, 611, 612, 613, 614, 615, 616, 617, 618, 619, 620, 621, 622, 623, 624, 625, 626, 627, 628, 629, 630, 631, 632, 633, 634, 635, 636, 637, 638, 639, 640, 641, 642, 643, 644, 645, 646, 647, 648, 649, 650, 651, 652, 653, 654, 655, 656, 657, 658, 659, 660, 661, 662, 663, 664, 665, 666, 667, 668, 669, 670, 671, 672, 673, 674, 675, 676, 677, 678, 679, 680, 681, 682, 683, 684, 685, 686, 687, 688, 689, 690, 691, 692, 693, 694, 695, 696, 697, 698, 699, 700, 701, 702, 703, 704, 705, 706, 707, 708, 709, 710, 711, 712, 713, 714, 715, 716, 717, 718, 719, 720, 721, 722, 723, 724, 725, 726, 727, 728, 729, 730, 731, 732, 733, 734, 735, 736, 737, 738, 739, 740, 741, 742, 743, 744, 745, 746, 747, 748, 749, 750, 751, 752, 753, 754, 755, 756, 757, 758, 759, 760, 761, 762, 763, 764, 765, 766, 767, 768, 769, 770, 771, 772, 773, 774, 775, 776, 777, 778, 779, 780, 781, 782, 783, 784, 785, 786, 787, 788, 789, 790, 791, 792, 793, 794, 795, 796, 797, 798, 799, 800, 801, 802, 803, 804, 805, 806, 807, 808, 809, 810, 811, 812, 813, 814, 815, 816, 817, 818, 819, 820, 821, 822, 823, 824, 825, 826, 827, 828, 829, 830, 831, 832, 833, 834, 835, 836, 837, 838, 839, 840, 841, 842, 843, 844, 845, 846, 847, 848, 849, 850, 851, 852, 853, 854, 855, 856, 857, 858, 859, 860, 861, 862, 863, 864, 865, 866, 867, 868, 869, 870, 871, 872, 873, 874, 875, 876, 877, 878, 879, 880, 881, 882, 883, 884, 885, 886, 887, 888, 889, 890, 891, 892, 893, 894, 895, 896, 897, 898, 899, 900, 901, 902, 903, 904, 905, 906, 907, 908, 909, 910, 911, 912, 913, 914, 915, 916, 917, 918, 919, 920, 921, 922, 923, 924, 925, 926, 927, 928, 929, 930, 931, 932, 933, 934, 935, 936, 937, 938, 939, 940, 941, 942, 943, 944, 945, 946, 947, 948, 949, 950, 951, 952, 953, 954, 955, 956, 957, 958, 959, 960, 961, 962, 963, 964, 965, 966, 967, 968, 969, 970, 971, 972, 973, 974, 975, 976, 977, 978, 979, 980, 981, 982, 983, 984, 985, 986, 987, 988, 989, 990, 991, 992, 993, 994, 995, 996, 997, 998, 999, 1000.

SK. FILE

20
~~23~~

JEFF DAVIS CO

RS Dod's SK. & Report
Dated Oct. 8, 1923.
Filed Oct. 10, 1923.

counter 27985

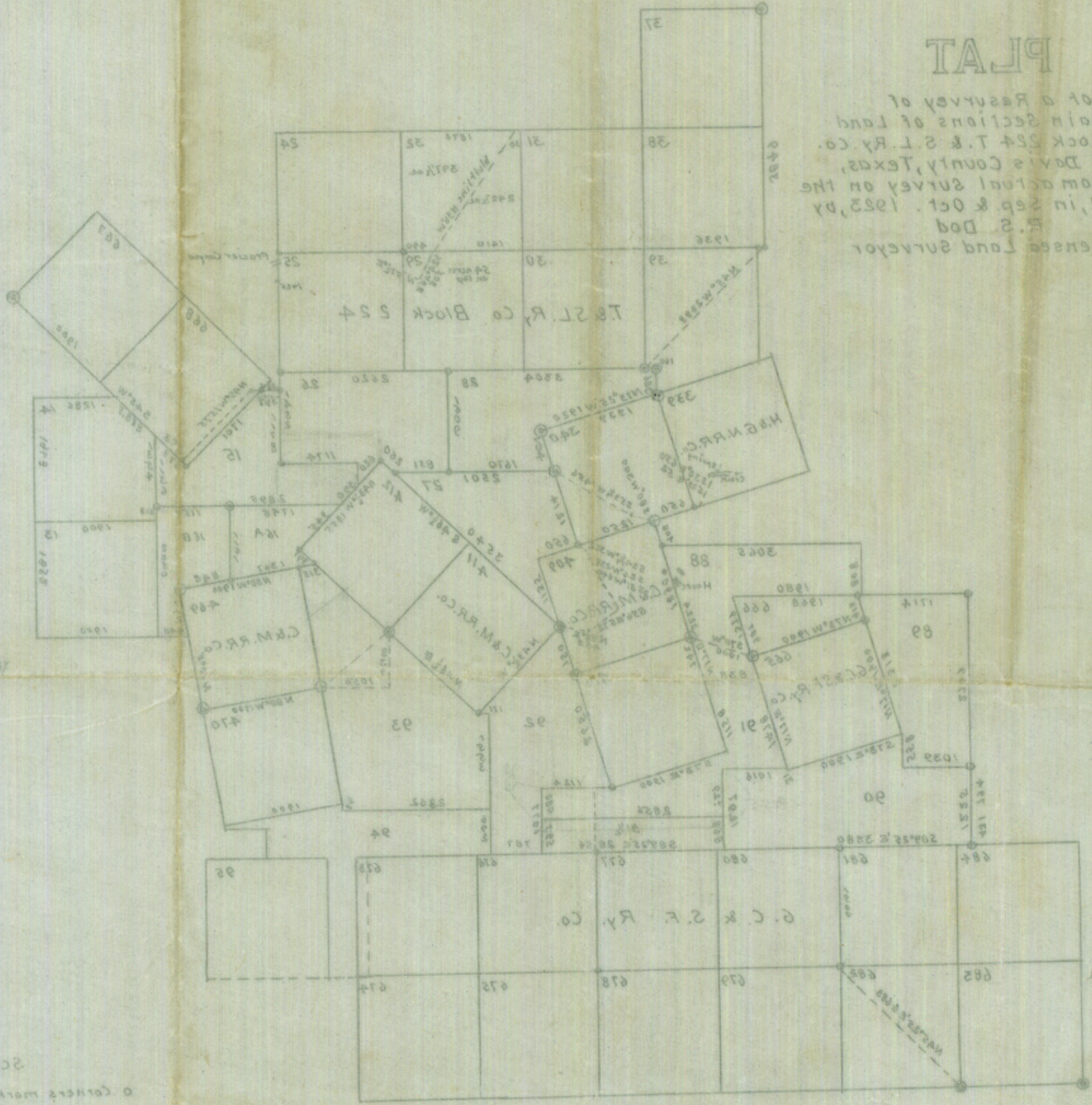
EX 7

#20 Jeff Davis County
 Surveyor's Plat
 filed Oct-10-1923
 W.D.

counter 27986

PLAT

of a Resurvey of
 certain sections of land
 in Block 224 T. & S. R. Co.
 Jeff Davis County, Texas,
 made from actual survey on the
 ground, in Sep. & Oct. 1923, by
 R. S. Dod
 Licensee Land Surveyor



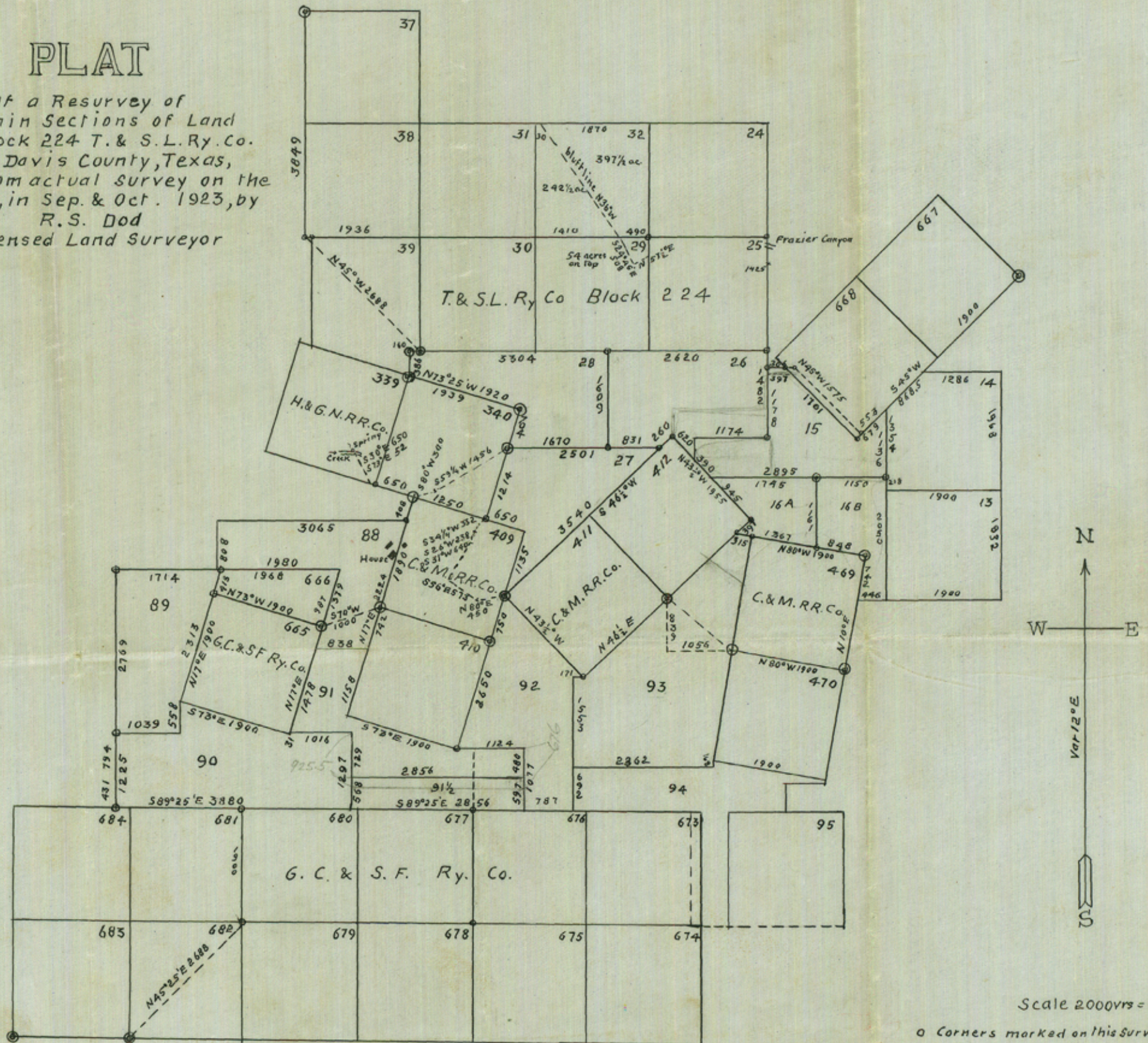
Scale 5000 ft = 1 in
 O Corners marked on this survey
 © Original corners found

I, W. D. Dod, licensed land surveyor of Texas, do hereby certify that the foregoing plat is true and correct, and that all lines, corners, courses, distances and bearings thereon, and all other matters shown as found on the ground by actual survey in the field made by me in Sep. & Oct. 1923
 at Austin, Texas, Oct. 2, 1923
 R. S. Dod
 Licensee Land Surveyor

Remitted to a page 119 Surveyor's Licensee R. S. Dod

PLAT

of a Resurvey of
 certain Sections of Land
 in Block 224 T. & S. L. Ry. Co.
 Jeff Davis County, Texas,
 made from actual survey on the
 ground, in Sep. & Oct. 1923, by
 R. S. Dod
 Licensed Land Surveyor



Scale 2000ft = 1in.

○ Corners marked on this Survey

⊙ Original corners found.

I, R. S. Dod, Licensed Land Surveyor of Texas, do hereby certify that the foregoing Plat is true and correct, and that all lines, corners, courses & distances are thereon truly and correctly shown as found on the ground by actual survey in the field made by me in Sep. & Oct. 1923
 Alpine Texas, Oct 6th 1923

R. S. Dod
 Lic. Land. Sur.

Recorded vol x page 119 Surveyors Records Jeff Davis Co
 R. S. Dod

counter 27987