

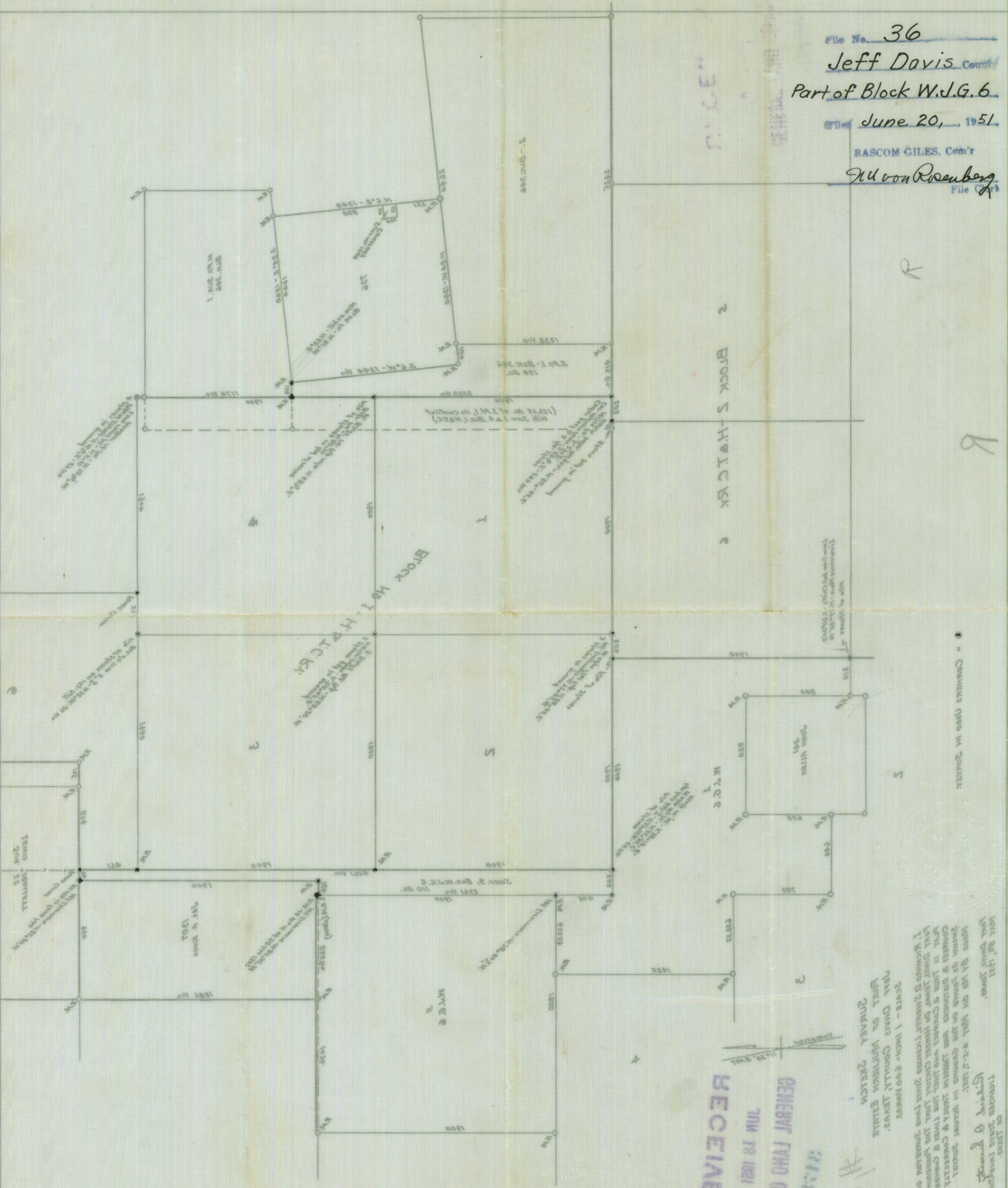
counter 28058

File No. 36
Jeff Davis County
Part of Block W.J.G. 6

Dated June 20, 1951

RASCOM GILES, Com'r
Ed von Rosenberg
File (A)

3013

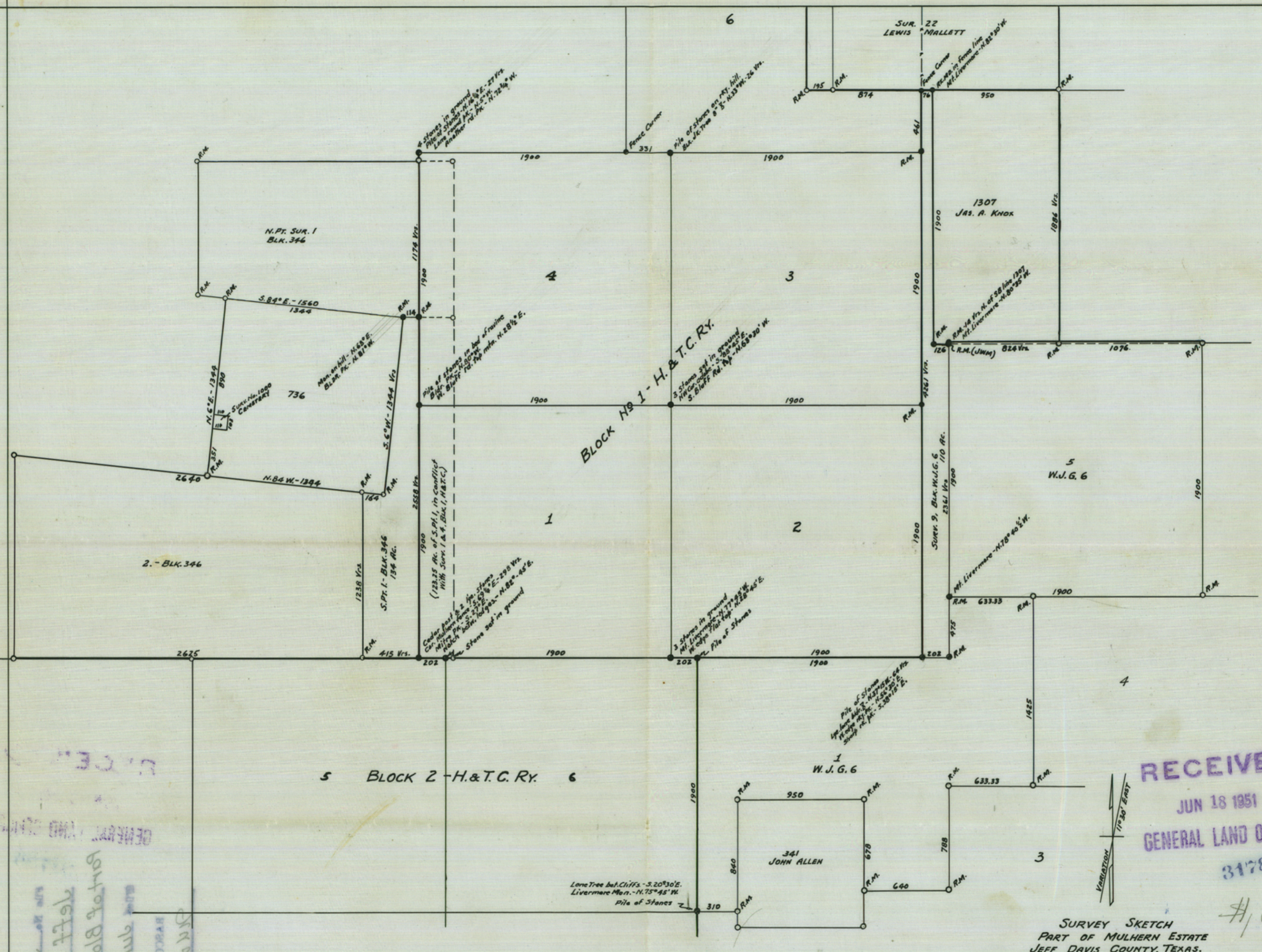


• = Corners used in Survey

SCALE - 1 INCH = 400 FEET
JEFF DAVIS COUNTY TEXAS
SURVEY SKETCH

RECEIVED
GENERAL LAND OFFICE
JUN 28 1951

counter 28048



RECEIVED
 JUN 18 1951
 GENERAL LAND OFFICE
 31783

JEFF DAVIS COUNTY
 BLOCK 2 - H. & T.C. RY.
 1951

JEFF DAVIS COUNTY
 BLOCK 2 - H. & T.C. RY.
 1951

JEFF DAVIS COUNTY
 BLOCK 2 - H. & T.C. RY.
 1951

RECEIVED
 JUN 18 1951
 GENERAL LAND OFFICE
 31783

SURVEY SKETCH
 PART OF MULHERN ESTATE
 JEFF DAVIS COUNTY, TEXAS.
 SCALE - 1 INCH = 600 VARAS.

I, RICHARD D. SWARTZ, LICENSED STATE LAND SURVEYOR OF FORT DAVIS, TEXAS, DO HEREBY CERTIFY THAT THE FOREGOING PLAT IS TRUE & CORRECT AND THAT THE LINES & CORNERS, COURSES & DISTANCES ARE THEREIN TRULY & CORRECTLY SHOWN AS FOUND ON THE GROUND IN ACTUAL SURVEY MADE BY ME ON MAY 4-5-7, 1951.

FORT DAVIS, TEXAS.
 MAY 8th, 1951

Richard D. Swartz
 LICENSED STATE LAND SURVEYOR
 OF TEXAS.

● = CORNERS USED IN SURVEY.

Counter 28049