

15 15 15 A 150 15  
29

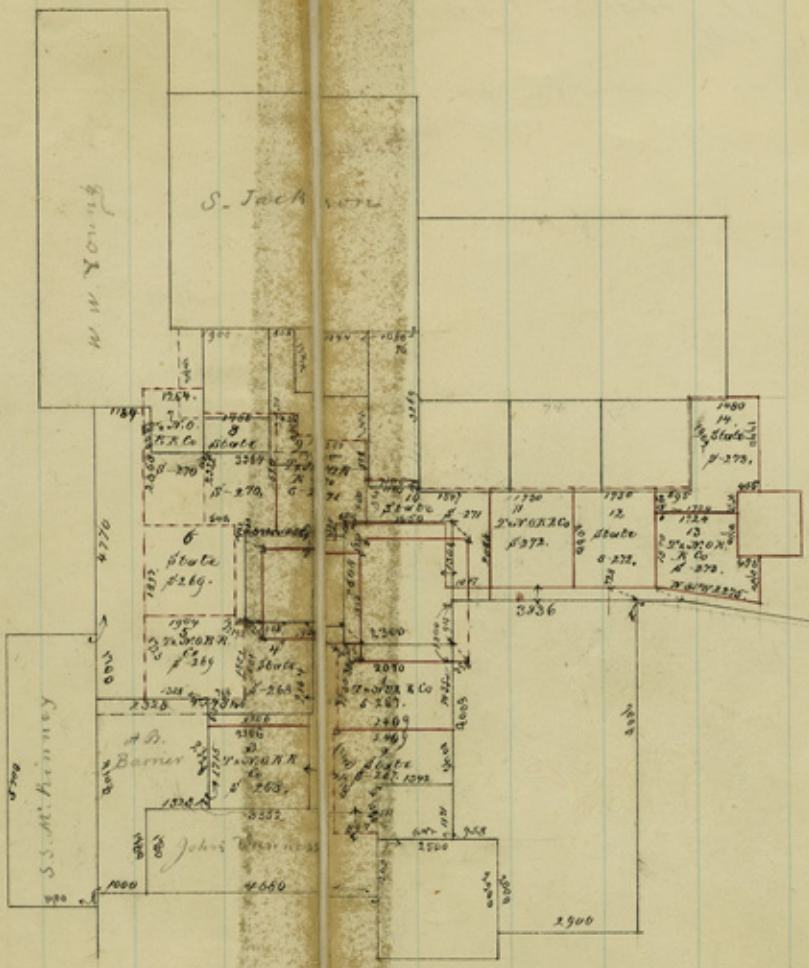
JEFFERSON

SK. F. 12

T & NORRIS Co Surs. in NW. part  
of Co.

Filed Aug. 7. 1871.

Counter 28 151



counter 28/52



15

File 10.

Jefferson County

plotted in office  
December 8<sup>th</sup> 1840

600  
1293  
6214

counter 28153

2661  
2261  
2215

From Mc Caffey's S E Corner down the Paps with the  
meanders as follows

Course	Dist	North	South	East	West	
S 75 E	508		131	490		Wilson's Front
S 65 E	500		211	453		Burlans "
S 54 E	570		335	461		} Beril J "
S 35 E	150		123	86		
S 20 E	503		473	172		
S 33 E	500		419	272		Williams "
S 39 & E	503		388	320		Dorsett "
S 33 E	50		42	27		4 Courses

East of J R Bevil

L  
P  
2005  
8  
6  
7  
2  
7  
9

counter 28155