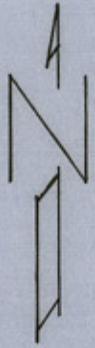
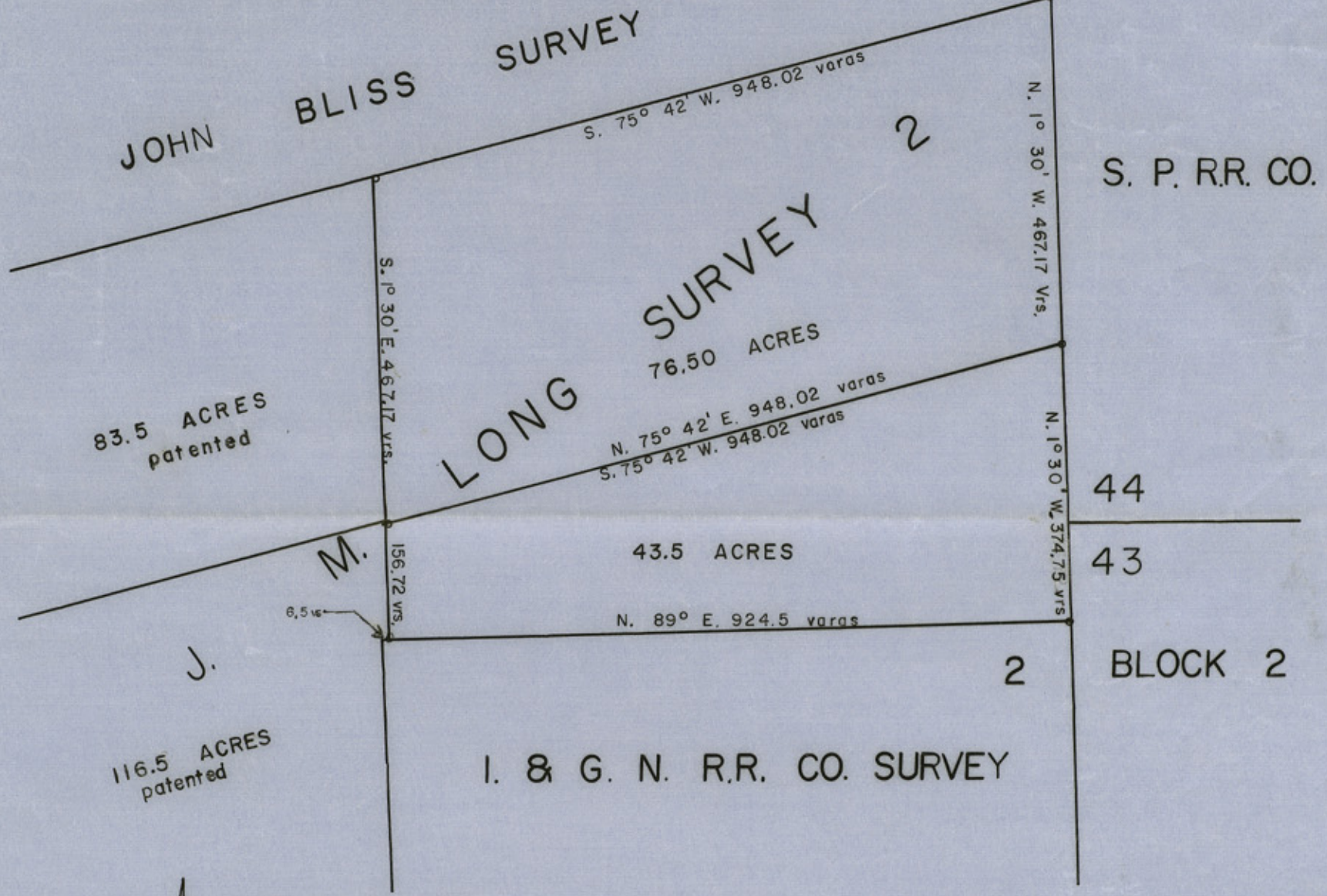


JONES COUNTY, TEXAS

EAST END OF THE NORTH 320 ACRES OF THE J. M. LONG SURVEY NO. 2



SCALE 1" = 200 VARAS

CERTIFIED CORRECT AS SURVEYED ON THE GROUND,
APRIL 2 and MAY 20, 1981.

Earl McCaleb

 Earl McCaleb, County Surveyor, Jones County, Texas

Filed for Record in my office, the 22nd day of May, 1981, at 5 o'clock p.m., and duly recorded the 23rd day of May, 1981, in Book P, Page 396, of the Surveyor's Records of Jones County, Texas.

Earl McCaleb

 Earl McCaleb, County Surveyor of Jones County, Texas

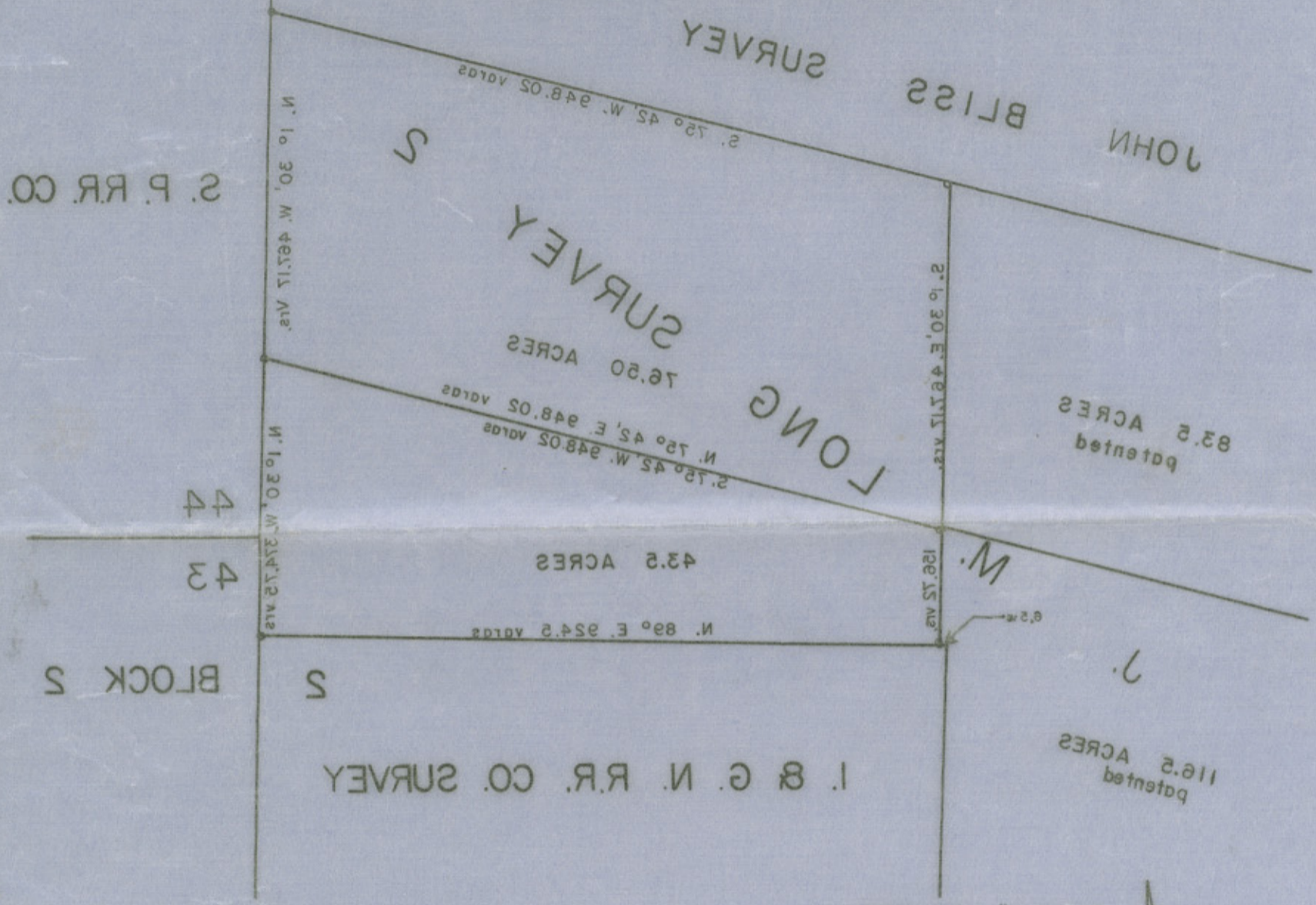
RECORDED
 MAY 30 1981
 General Land Office

Earl McCaleb

 EARL MCCALEB, COUNTY SURVEYOR
 1801 - 02 - 2
 504 N. W. 2nd St. M.L.
 JONES COUNTY, TEXAS
 181 2/24/81

JONES COUNTY, TEXAS

LONG SURVEY NO. 2
 350 ACRES OF THE N. M.
 EAST END OF THE NORTH



CERTIFIED CORRECT AS SURVEYED ON THE GROUND,
 APRIL 2 and MAY 20, 1981.

Earl McCaleb
 Earl McCaleb, County Surveyor, Jones County, Texas

Filed for Record in my office, the 22nd day of May, 1981, at 5 o'clock p.m., and duly recorded the 23rd day of May, 1981, in Book P, Page 396, of the Surveyor's Records of Jones County, Texas.

Bob Armstrong
 Bob Armstrong, County Surveyor of Jones County, Texas

RECEIVED
 MAY 30 1981
 General Land Office

Sketch file 18
 Jones County
 J.M. Long Sur. No. 2
 9-30-1981

County 28515