

Alcena, Kansas Co  
Texas March 11<sup>th</sup> 1889

Commissioner

General Land Office  
Austin, Texas.

Sir

I take the liberty of reporting  
for your consideration the relations  
existing between the A. G. Holmes,  
the Tho: Woods, and the D. B.  
McConnell surveys, situated in  
the Northeastern part of this County,  
and surveyed by me under an  
application for a Homestead Donation.

I identified the Northwest  
corner of the McConnell League  
by giving it its distance, S. 70 W.  
1097 Varas from the T tree at the  
J. W. Laurin, Commencing corner -  
This Bearing Tree I first determined  
by actual survey, by the old scars  
on the tree, and by the testimony  
of old citizens as to the locality -  
I thus located and ran the West  
line of the McConnell survey, and  
found many old Surveyors' line marks,  
in one place tracing a continuous  
line of blazes for 1400 Varas. -



I then ran out the A. C. Holmes Survey according to its courses as given in the field notes, commencing at the beginning corner.

In this survey I have to record some extraordinary inaccuracies, and to which I take the liberty of drawing your attention. - In the second course, which is to run east with the A. Flowers Survey, the distance is given as 7 varas. By actual measurement I found it to be 69 varas to a point 600 N. 3. W of a Post oak marked Y, which ought to be the point intended as called for in the Flowers Survey.

The call of the A. C. Holmes South Boundary line is to run from the S. E. corner of the Flowers Survey 2303 varas East, along the North line of the Wm. Stunter Survey, to its point of intersection with the D. B. Mc Connell League. - By chaining, the 2303 varas terminated at a point 530 <sup>4</sup>/<sub>10</sub> varas West of the point of intersection of the Stunter and the Mc Connell -



The next call in the Holmes field notes is N. 20. W. 2178 Varas, to a stake, "the Northwest corner of the D. B. Mc Connell, on the South Boundary line of the Thr. Sands Survey, and 1473 vs. N. 70 E. from its beginning corner."

Supposing the East line of the Holmes to agree with the West line of the Mc Connell, the utter impossibility of such a stake is manifest when we find that the Sands Survey nowhere touches the Mc Connell, but that its S. E. corner, the nearest point, is 576 varas from the N. W. corner of the Mc Connell League, and the point on the South line of the Sands Survey called for, viz: 1473 Varas from the beginning is N.  $65\frac{1}{2}$  W 698  $\frac{7}{10}$  Varas from the Mc Connell N. W. corner -

But, in point of fact, the East line of the Holmes Survey, if run from the 2303 Varas call on the Hunter North line, with a N. 20 W. Bearing, nowhere touches the Mc Connell West line, but will run parallel to it at a perpendicular



distance of 505<sup>7</sup>/<sub>10</sub> varas, though it reaches  
the South line of the Alamos at a  
point 1473 varas N. 70 E. from the  
beginning corner, as called for in the  
field notes -

By confining the East line to this  
point the Holmes Survey will contain  
3,512,508 square varas of land by actual  
measurement - It only claims to  
contain, by the field notes 3,404,372  
square varas, but in effect it is  
covering by its call to the McConnell  
West line 4,528,757 square varas -

The errors in the Holmes field  
notes are so great, and it is covering  
so much more ground than its given  
area that it is doubtful if the  
survey was ever located by actual  
measurement upon the ground, and  
the Surveyor was in perfect ignorance  
of the true location of the Alamos  
and McConnell Surveys -

As the excess ought to be  
State property, and has been covered  
only through gross error or misunderstanding  
I will feel obliged if you will  
kindly inform me what course I  
should pursue under the circumstances,



if the Holmes Survey can be  
reduced to its proper limits, and  
if so, if the excess is open to  
occupation by actual settlers?

I am Sir  
Yours Truly  
Wm. S. Leekie

C. S. H. Co.

1874



16

No. 8. 12.

Karnes Co.

Sketch file.

Dated March 11. 1889.

Filed March 18/89.

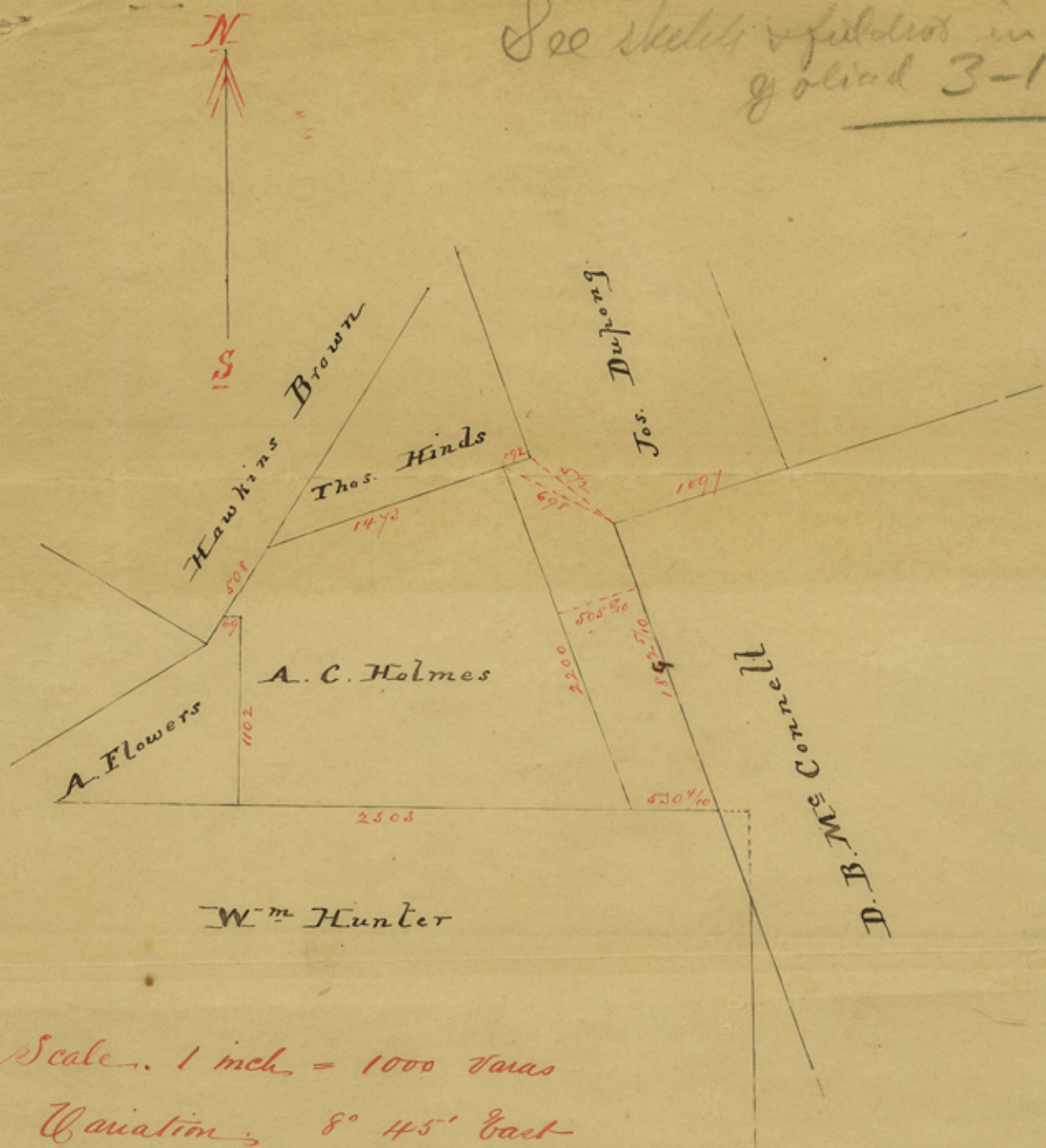
In re to location of A. C. Holmes  
SUR.

counter 28609

16



See sketch of fields in  
yolied 3-166,



Scale, 1 inch = 1000 Varas

Variation, 8° 45' East

Surveyed 9<sup>th</sup> March 1889

Wm. Keyland  
Mathew Thomas

counter 28610

Wm. St. Leckie  
C. S. K. Co. T. et.