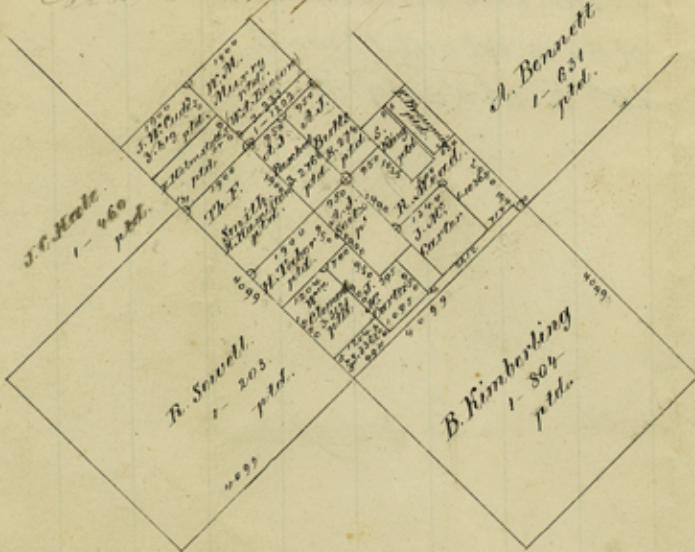


Kaufmann's S. 1-1036.

According to the bearing trees on the old Boardman survey (3-333) covered by W. McManis survey (3-3828) there is no vacancy between J. W. Castle (3-619) and E. Heinstetter (3-2865) as represented on the map of Kaufmann Co.

Oct. 29/75. E. Schuyler.



File #
~~#~~ 17

Kaufman Co.

Oct. 29/73.

Schutz

No
Schulze's office SK.
of Surs. about 12 mi. N.
20° E. of Kaufman.