

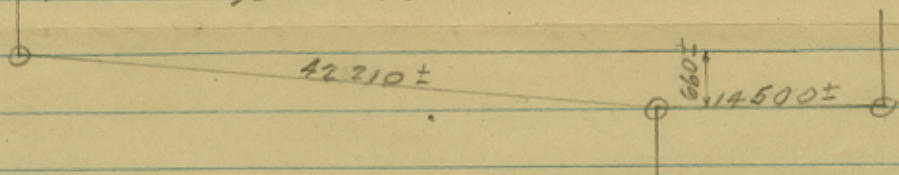
Because of the lack of conformity between the various county lines as surveyed by different surveyors and a similar lack of conformity between the surveys along the county lines with said county line surveys we are unable to give you any information that we can recommend for its accuracy.

For the North, East and South lines of Kent County our records date back to 1892 and 1895. About this time several surveys were made of these lines. All of these surveys differ materially. For the West line of Kent County we have a survey by Harris in 1934 which for various reasons we consider to be correct.

Our records show approximately the following conditions:

North line Kent County	56 680 ±	varas
East	do	56 800 ± do
* South	do	56 710 ± do
** West	do	56 127 varas
Area 567,834 ± acres		

* The South line breaks as shown



** This is the distance from Harris's survey of 1934.

Computed by Joe Brown

887 sq. mi.
Kent.

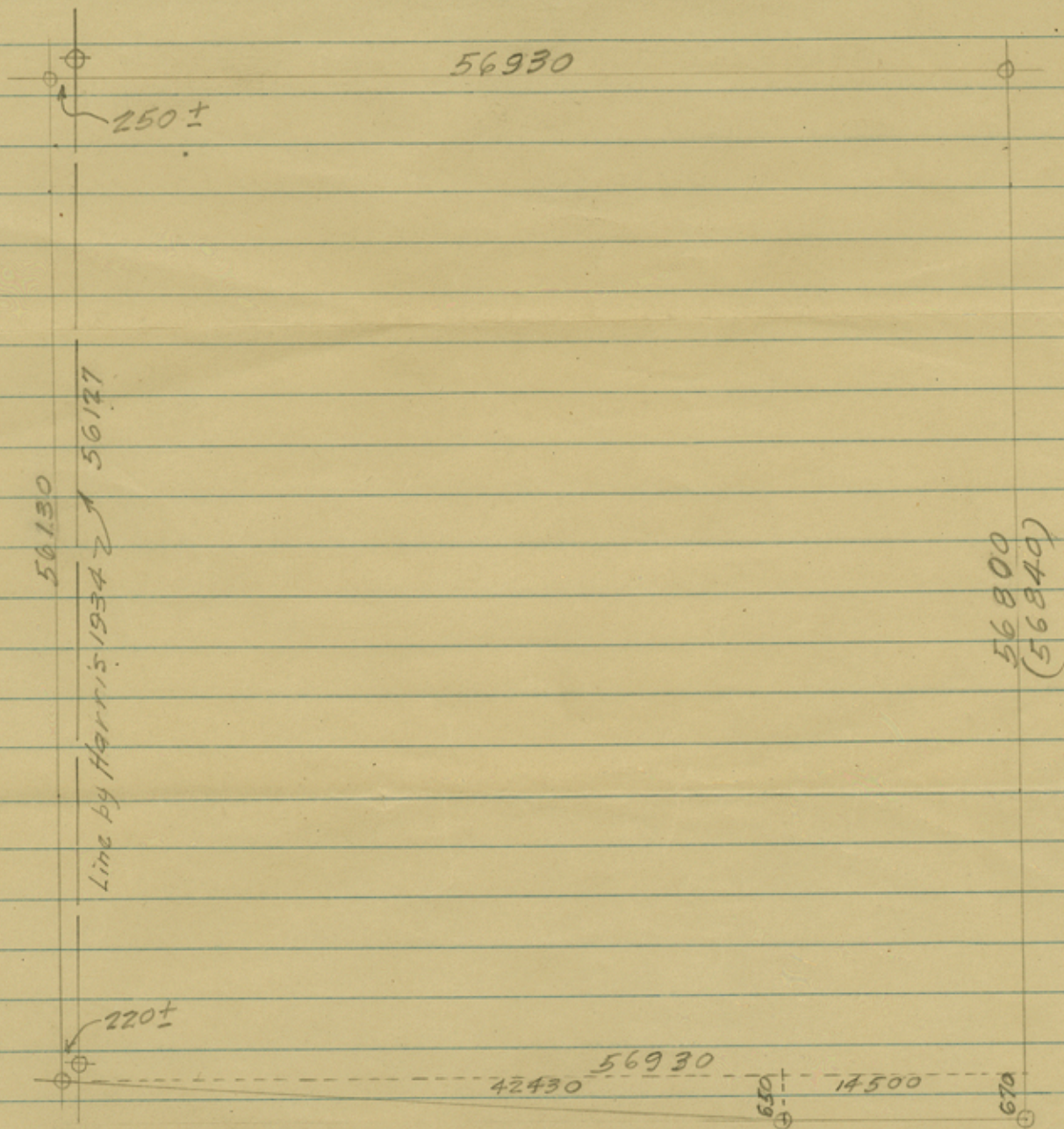
March 1936

Kent County
Area Computations

Kent Co. St. File # 15

Counter 28843

Kent Co.



$$56130 \times 56930 = 3,195,481,000$$

$$42430 \times 325 = 13,790,000$$

$$14500 \times 660 = 9,570,000$$

$$3,218,841,000 \text{ sq. ft.}$$

$$570,171 \text{ acres}$$

$$891 \text{ sq. mi.}$$

$$56130 \times 235 = 13,191,000 \text{ sq. ft.}$$

$$2,337 \text{ acres}$$

$$4 \text{ sq. mi.}$$

37

$$570,171$$

$$891$$

counter
28844

$$2,337$$

$$4$$

$$567,834 \text{ acres}$$

$$887 \text{ sq. mi. } 887^e$$

15
Kent Co.
Sketch Files

Area

Obarrow
3-11-36

Checked
3-23-36