

The State of Texas  
County of Trimble

See Connection  
in 8-3290

I, John M. Nicol

County Surveyor of Trimble County  
do hereby certify that I have actually  
run upon the ground the following  
connection line beginning at the NE  
corner of Sec. No 448 in range E.  
Delgado. Thence S 117 40' vs to a st  
md the SE cor same. Thence S 52° 32' E  
4158 7/5 vs. Thence S at 2251 3/5 vs  
a st md whence a L.O. 3" brs. N 44 1/2 E  
15 1/2 vs another L.O. 2 1/2" brs. S 48 1/2 E 8 3/4 vs.  
at 5963 a st md on top of ridge whence  
a L.O. 12" brs. N 76 3/4 E 150 vs. a L.O. 6" brs  
N 81 E 150 vs. Thence S 45 W 1967 7/5 vs  
to a st md whence a L.O. 5" brs S 51 1/2 W 6 vs.  
a Mesquite 10" S 59 W 8 3/4 vs. Thence S  
2855 vs. Thence E 8 varas to a st md  
in Mills' hollow whence a L.O. 12" brs  
N 11 3/4 E 20 vs. a L.O. 20" brs N 29 1/2 E 22 1/4  
vs. Thence N 20 varas. Thence W 4140  
vs to a st md on top of divide between  
Sycamore Creek trib. of Llano R. and  
James R. whence a Cedar 10" brs S 17 W  
31 vs. a L.O. 3" N 34 1/2 W 8 vs. Thence  
S 360 vs. Thence W 1545 vs to st md  
on head of Sycamore trib. of Llano R.  
whence a L.O. 3" brs N 17 E 45 vs. Thence  
W 3660 to a st. md on North side of  
Sycamore creek a trib. of Elm Fork.



at 265 varas strike the East line of Survey No 21 S W N S R R Co 20 varas South of its N.E. corner.

And I further certify that I found and identified the East corner of survey No 667, the South corner of <sup>no</sup> 668 and the North corner of Survey No. 669 B B B & C. R R Co. also the NW corner of J. W. Bartley's pre-emption, the NW cor Sur No 753 Kimble Co. School Land, <sup>and S.W</sup> a <sup>n</sup> corner of Survey No 16 S C & S. I R R Co Secp No 3096, 515 vs S of its NW corner.

I further certify that the distances and directions as represented in the accompanying sketch have been ascertained by careful measurement actually made on the ground and are truly represented thereon

Given under my hand this 26<sup>th</sup> day of October 1885 A. D.

John M Nicol  
Co. Sur. Kimble Co.

Sketch File 13.

Kimble County

Filed Nov. 13/85.

J. H. Robinson

Chief Clerk

Connection of  
Blair River &  
South Laws.



Filed Nov. 13<sup>th</sup> 1885  
D. Robinson  
Chief Clerk

Llano R.

E. Delgado

448

9

14

15

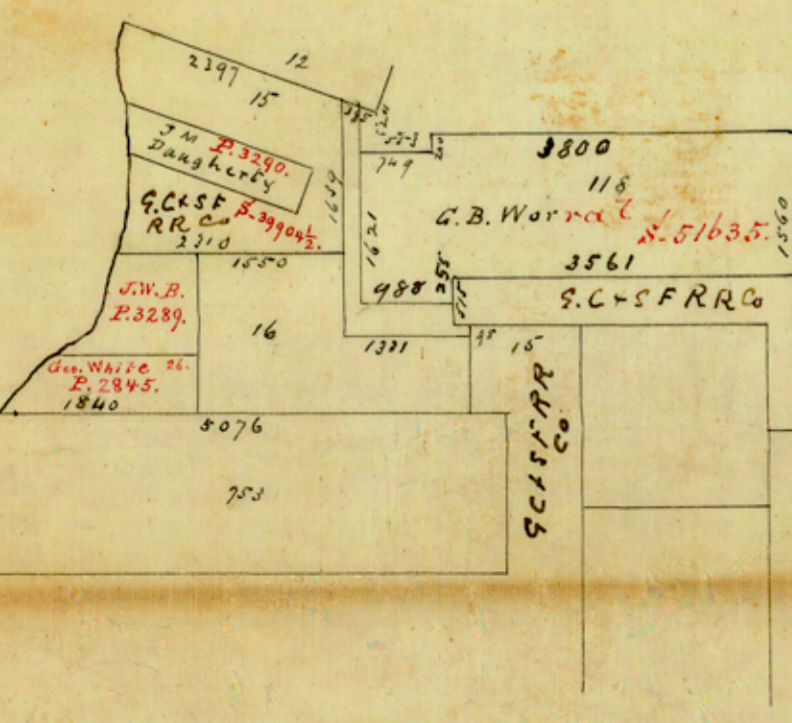
24 23 22

25 26 27

H Martin	2	1	36	35	34
	3	4	5	6	7

T.M.C.R. Co	18	17	16	15	14
----------------	----	----	----	----	----

71	12	1	2	77	78	19	21	24						
72	73	3	4	75	76	17	20							
79	77	74	16	5	6	65	16	15	18					
78	75	76	7	7	8	67	66	13	14	10	9			
71	12	1	2	77	78	19	21	24	18	17	16	15	14	
72	73	3	4	75	76	17	20	19	20	21	22			
79	77	74	16	5	6	65	16	15	18	32	31	30	29	
78	75	76	7	7	8	67	66	13	14	10	9	33	34	35



COUNTY # 1132