

Kimble c. 18,
Office Sketch
Dated Aug. 28, 1890,
No. 190
by
G. W. Beaumont

on North Fork of Llano R.
about 15 mi. West of Junction,

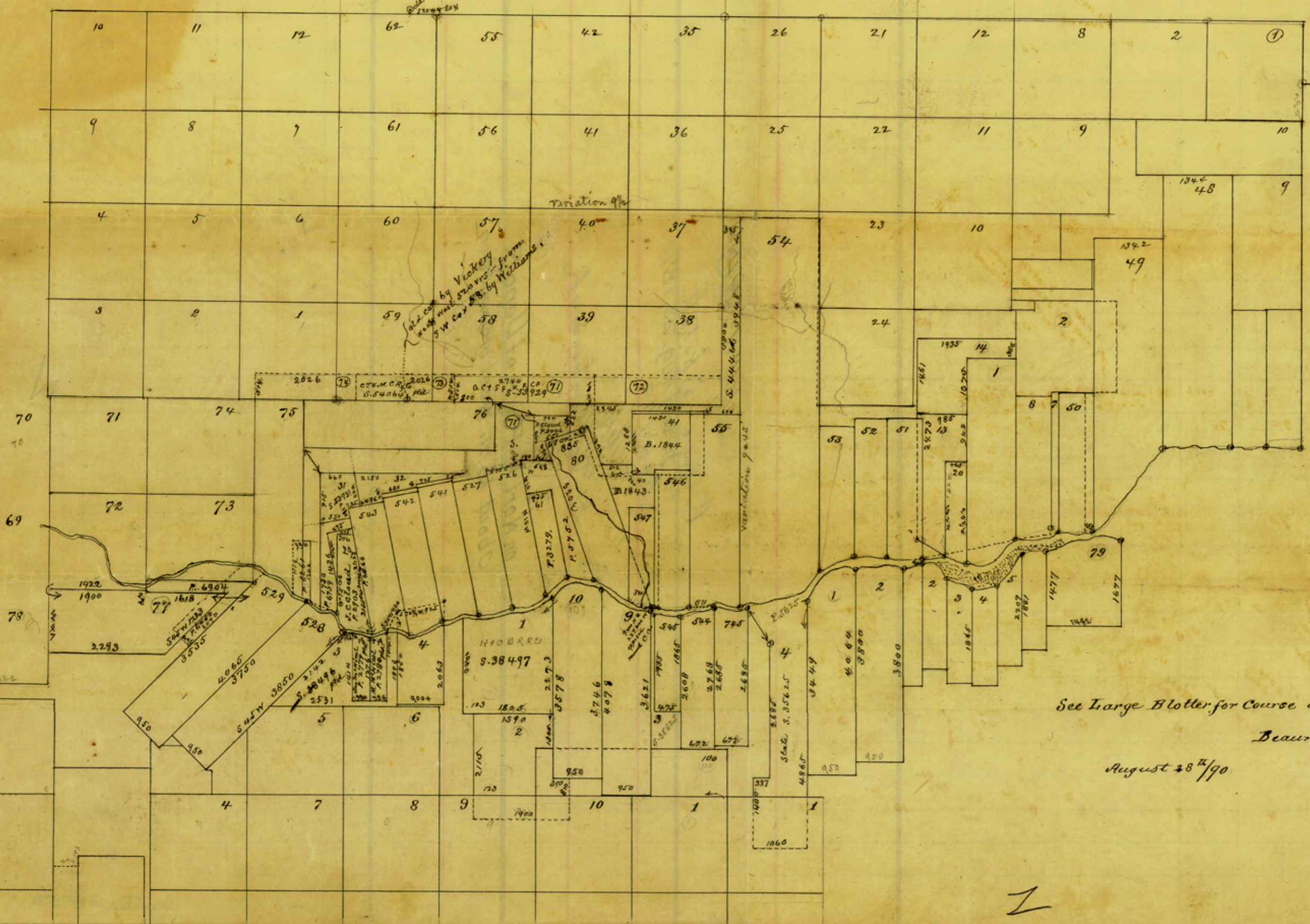
2

1583

Dist. cor by Vickery
1830-20N

variation 9 1/2

Dist. cor by Vickery
from
SW cor 58 by Williams



See Large Blotter for Course and distances - Scale 2000 yards
Beaumont.

August 28th/90

Z

counter 28959