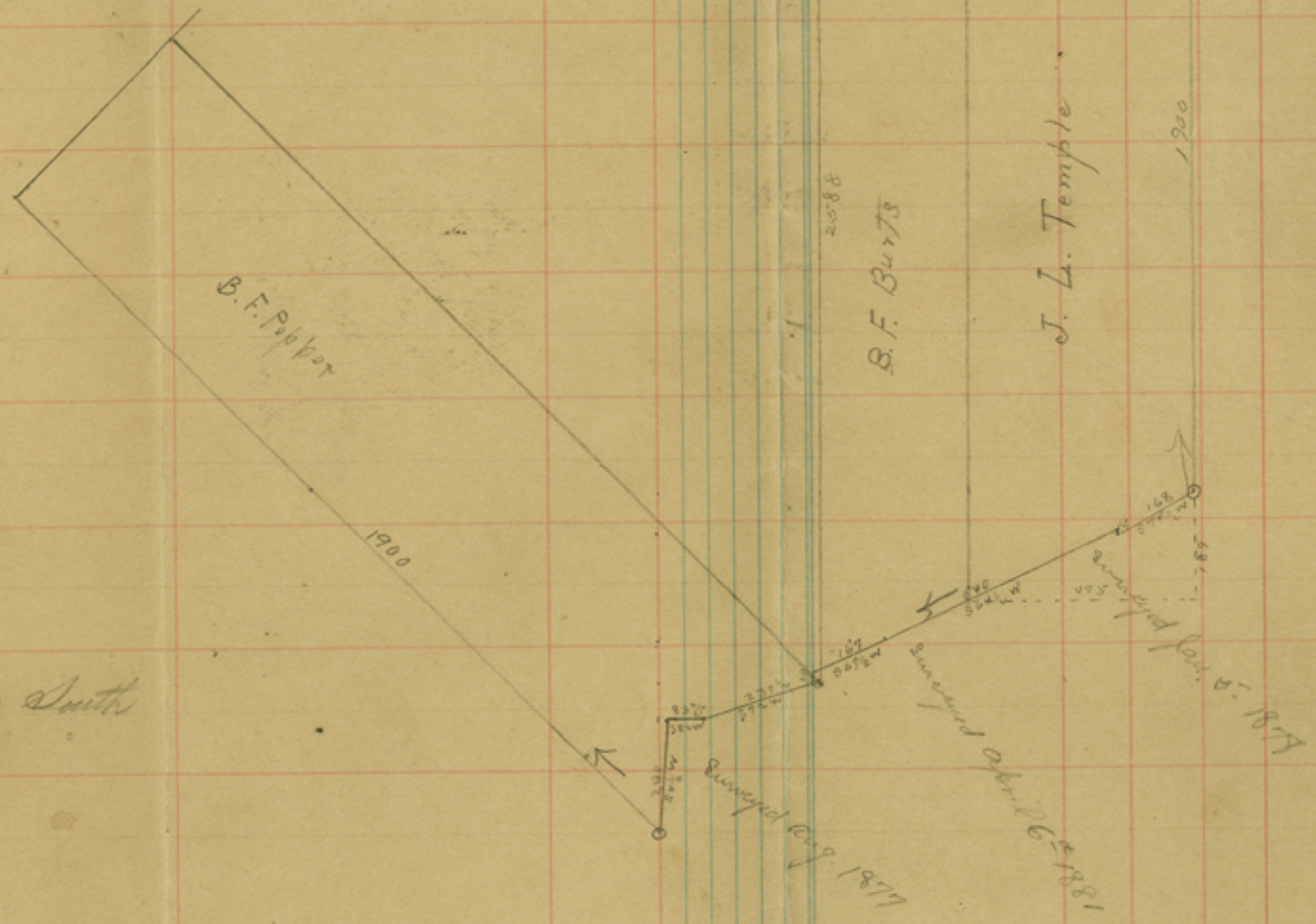


23  
24  
25  
26  
27  
28  
29  
30  
31  
32  
33  
34  
35  
36  
37  
38  
39  
40  
41  
42  
43  
44  
45

{ Meanders of river from S.W. cor. J. J. Ramsey Sur. to East cor. of N<sup>o</sup> 399 - A. Hillman }  
 { both of these corners identified by witness tree the S.W. cor. of J. L. Temple not found }  
 S 74 1/2 W. 168 rods — North 5 rods — S 64 1/2 W. 540 rods — S 67 1/2 W. 167 rods —  
 South 20 rods to W. o. stump about 10 ft high marked X on East side.  
 S 72 W. 237 1/2 rods — S 82 W. 837 1/2 rods — S 4 1/2 W. 230 rods to original East  
 cor. N<sup>o</sup> 399 - A. Hillman's

	N	S	E	W
S 74 1/2 W. 168 =		44.9		161.9
North =	5.			
S 64 1/2 W. 540 =		232.5		487.4
S 67 1/2 W. 167 =		63.9		154.3
South 20 =		20.		
S 72 W. 237 1/2 =		73.4		226.8
S 82 W. 837 1/2 =		11.5		82.6
S 4 1/2 W. 230 =		229.3		18.0
		675.5		1130.0



According to above connection, the S.E. cor. of  
 A Hillman N<sup>o</sup> 399, is 1130 rods West x 670 rods South  
 from J. L. Temple's S.W. cor.

1/5/99 (sic)

45  
44  
43  
42  
41  
40  
39  
38  
37  
36  
35  
34  
33  
32  
31  
30  
29  
28  
27  
26  
25  
24  
23

A. L. B. A-1  
Kimberly Co  
Surveyor's Sketch  
& County Lines  
Between North & South  
forks of Llano  
River.

Filed July 4<sup>th</sup> 1899

Chif Clerk