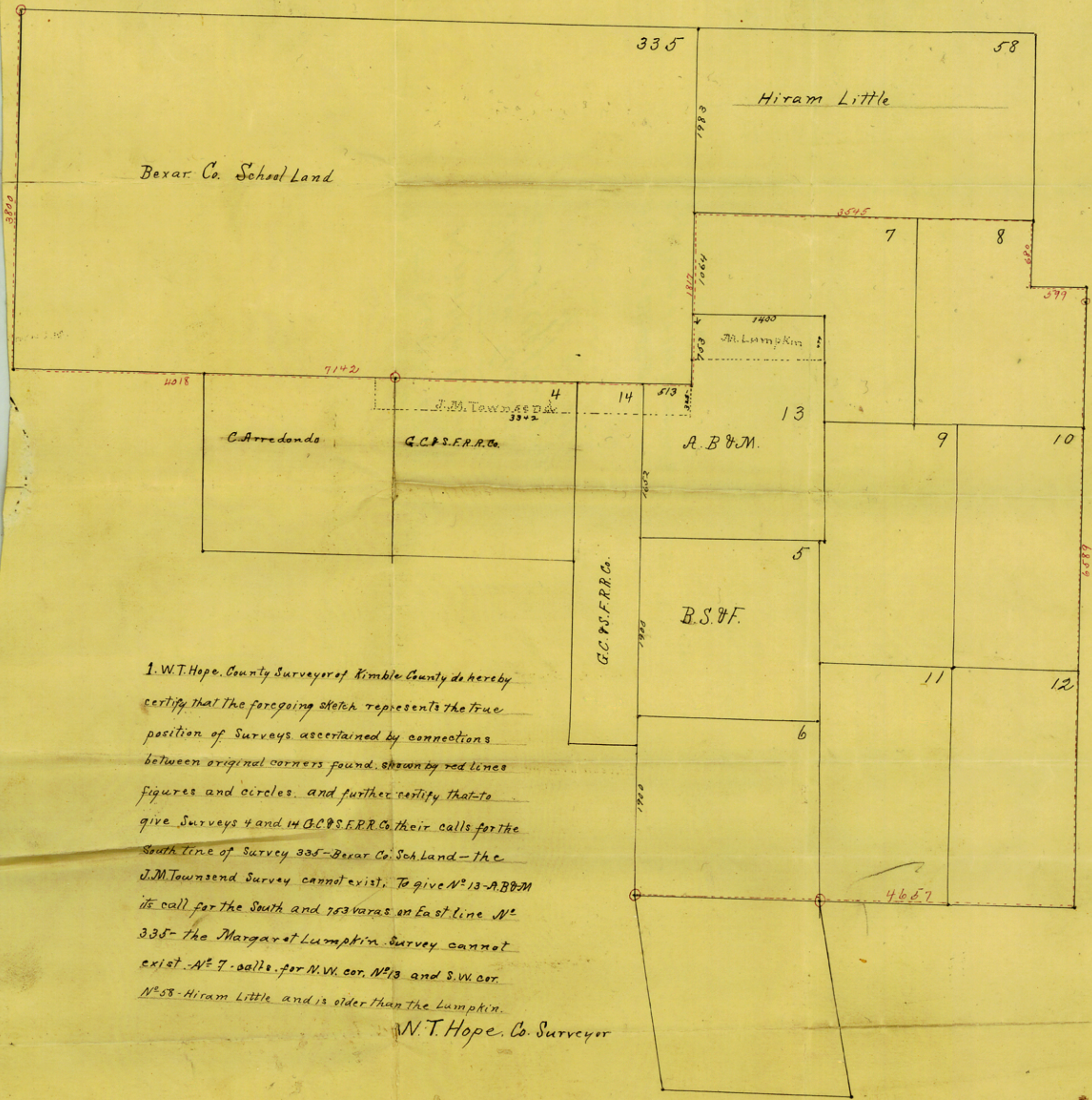


See sketch in S. 55226 -



1. W.T. Hope, County Surveyor of Kimble County do hereby certify that the foregoing sketch represents the true position of Surveys ascertained by connections between original corners found, shown by red lines figures and circles, and further certify that to give Surveys 4 and 14 G.C.P.S.F.R.R. Co. their calls for the South line of Survey 335 - Bexar Co. Sch. Land - the J.M. Townsend Survey cannot exist. To give N^o 13 - A.B. & M. its call for the South and 763 varas on East line N^o 335 - the Margaret Lumpkin Survey cannot exist - N^o 7 - calls for N.W. cor. N^o 13 and S.W. cor. N^o 58 - Hiram Little and is older than the Lumpkin.

W.T. Hope, Co. Surveyor

Sketch "B" "B"
Kimble County

Filed in General
Land Office 11/13/99

L. C. Wise

W. T. Hope's SK showing non-
existence of the Townsend &
Lumpkin Surs.