



J. J. GOODFELLOW,

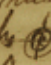
COUNTY SURVEYOR  
AND CIVIL ENGINEER.

OFFICE IN COURT HOUSE.

1642  
269  
752

FORT WORTH, TEX.,

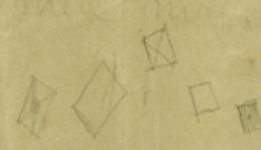
190

Notes— On the map sent you, I show the position of the A. B. V. M. & B. S. & F. survey in place on ground in accordance with the "Bedford Survey" of the "Ribble File". The stones shown on map as mark "S" are said to be corners set up by surveyor Jones when working for Stephens the owner of the A. B. V. M. & B. S. & F. survey & were placed in the position shown in order to make them fit the "Knott" survey where they call for the B. S. & F. survey. <sup>thus:</sup> Marks  indicate on map where original corners were found.

J. J. G.

on attachment  
to plot in  
King Co. Sk. File 7

Approved to  
J. J. Goodfellow



counter 29030

R'

THE STATE OF TEXAS

383



King

County

COUNTY OFFICERS:

- A. C. TACKITT, County Judge.
- R. S. DAVIDSON, District and County Clerk.
- W. M. MOORE, Sheriff and Tax Collector.
- J. T. SAYERS, Tax Assessor.
- J. H. LYNN, Treasurer.
- A. L. DUSEN, County Attorney.

COMMISSIONERS:

- R. H. RAY, - - - Precinct No. 1.
- G. W. GAYLER, - - - Precinct No. 2.
- C. A. HAMRICK, - - - Precinct No. 3.
- T. C. LOWRY, - - - Precinct No. 4.

GUTHRIE, TEXAS, .....190.....

State of Texas } To the Hon. G. W. Moore County Surveyor  
King County }  
—Special Statement—

Below is a statement of a portion of the work done by me in King County, in order to ascertain the true position of Original surveys Relative to, and, surrounding the R. B. Master son <sup>and other</sup> surveys in said County.

By your order  
Guthrie

On the 9<sup>th</sup> day of Oct. 1898, I began to survey from the N.W. Cor. of Survey N<sup>o</sup> 1 in name of B. B. B & C R.R. Co, the survey upon which "Guthrie", the County site of King Co, is situated, said corner being a large md of stone in the S. line of Deby Morris Survey whence the stump of a large double Cedar (original bearing) brs S17 E 25 varas.

Thence S. (Var. 11° E at) at 1300 vrs crossing Wichita River (C<sup>o</sup> E) at 1905 vrs a pile of stone for the S.W. Cor. of said B. B. B & C R.R. Co Survey N<sup>o</sup> 1 + N.W. Cor N<sup>o</sup> 2, same name, at 2637 vrs, distance for S.E. cor of J Brown Survey, no cor. found, at 3805 vrs. distance for S.W. Cor. said survey N<sup>o</sup> 2, no cor. found, Thence S. 765 vrs and made road for N.E. Cor. N<sup>o</sup> 6 + N.W. Cor. N<sup>o</sup> 7. of B.S. #7 surveys, Blk. 3., found said corner to be several hundred varas S.E. of this point, I ran Thence East 621 vrs and South 383 vrs to above mentioned Corner a md of stones, whence a Cedar brs N77 W 95. vrs and a peak brs N74 W 118 vrs. (Original bearings). Thence S. 3835 vrs to a point in the S. line of Sur. N<sup>o</sup> 38. B.S. #7 Blk 3. 165 vrs N87 3/4 W of its S.E. Cor. whence a "7000 ft" Musk brs

(1)

29031

THE STATE OF TEXAS.



King

County

COUNTY OFFICERS:

- A. C. TACKITT, County Judge.
- R. S. DAVIDSON, District and County Clerk.
- W. M. MOORE, Sheriff and Tax Collector.
- J. T. SAYERS, Tax Assessor.
- J. H. LYNN, Treasurer.
- A. L. DUSEN, County Attorney.

COMMISSIONERS:

- R. H. RAY, - - - Precinct No. 1.
- G. W. GAYLER, - - - Precinct No. 2.
- C. A. HAMRICK, - - - Precinct No. 3.
- T. C. LOWRY, - - - Precinct No. 4.

GUTHRIE, TEXAS, .....190.....

about 400 vs. Thence  $S 87 \frac{3}{4} E$  165 vs to said corner, a md of stone e. of a hill  
 whence a cedar (orig brng) has  $S 87 W$  120 vs + The "Fore & Aft" mark, called for in orig. field notes,  
 has  $N 87 \frac{3}{4} W$  about 550 vs., to this cor. we added a Cow's head & a Bear Bottle. Thence  $S 87 \frac{3}{4} W$   
 at 1900 vs made search for the s.w. cor. of N° 36, no cor found, in all 3885 vs to a <sup>large</sup> pile  
 of Flint Rocks, the N.W. cor N° 50. Thence  $S 87 \frac{3}{4} E$  1945 vs to a md of Flint Rocks the  
 N.E. cor N° 50 + N.W. cor. N° 51. Whence the N. one of 2 Knobs has  $N 60 \frac{1}{2} W$ .  
 Thence  $S 89 E$  1940 vs to the s.w. cor. N° 33, a md of Flint Rocks, to which we added a gyp rock,  
 the original beaming tree was dead & lying on the ground, I marked another Hack, standing  
 about 3 vs s. of the original, Thence  $S 89 E$  1949 vs to a point + made search for  
 s.w. cor. N° 32, no cor. found. Thence North 3834 vs to a point 96 vs s'w' of the  
 N.E. cor. of N° 10. said cor. being a large <sup>Rough</sup> md of Stone on the E. side of a cedar hill about  
 100 vs W. of a branch C° N.W.. From the N.E. cor. of N° 10. Thence  $S 88 E$  3885 vs  
~~to the s.w. cor N° 16~~ <sup>to</sup> 2 large flat rocks 10 vs W. of a br. (C° N.) <sup>here</sup>, made a large md 1 vs high.  
 Thence  $S 88 E$  1918 vs to a pile of stone in Human's Cr Vally about 60 vs W. of said  
 creek for s.w. cor. N° 19-. Thence  $S 88 E$  3899 vs to a large md of stone the s.w. cor  
 of N° 23 + N.W. cor. N° 22. Thence S. 1966 vs to the s.w. cor. said N° 22 + the N.E.  
 of N° 28, - 3 stones together for cor. Whence 3 mark from same root has  $N 20 W$  75 vs  
 XX Thence S. 1940 vs to the s.e. cor. of said N° 55 + N.E. cor. N° 57. Whence a <sup>28'</sup> mark has  $S 30 \frac{1}{2} E$  37 <sup>vs</sup>  
 (Orig beaming) commenced at the N.W. cor. of said N° 22, Thence  $S 88 E$  1900 vs  
 counter 29032 ⊕

THE STATE OF TEXAS.



King

County

COUNTY OFFICERS:

- A. C. TACKITT, County Judge.
- R. S. DAVIDSON, District and County Clerk.
- W. M. MOORE, Sheriff and Tax Collector.
- J. T. SAYERS, Tax Assessor.
- J. H. LYNN, Treasurer.
- A. L. DUSEN, County Attorney.

COMMISSIONERS:

- R. H. RAY, - - - Precinct No. 1.
- G. W. GAYLER, - - - Precinct No. 2.
- C. A. HAMRICK, - - - Precinct No. 3.
- T. C. LOWRY, - - - Precinct No. 4.

GUTHRIE, TEXAS, ..... 190.....

Set up a md of stone for the N.W. cor. of N<sup>o</sup> 25. Thence S 88° E 1900 varas & set up a large md of stone for the N.W. cor of N<sup>o</sup> 26 in said Blk 3 B.S. & 7 surveys. Thence S 88° E 1900 varas, at 1642 vs passing the S.W. cor. of N<sup>o</sup> 89 in name of J. B. Rector, heretofore made by me, and made large md of stone for the N.E. cor. of said N<sup>o</sup> 26. Thence S. 1966 vs & built a large md of stone 1 vs square & 1 vs high, one stone at base mkd "S.E.-26" for the S.E. cor of this survey, in the valley of a branch that runs E., and 60 vs N. of same, and about 100 vs S. of a high hill or ridge. - - - - -

July 22-1901 commenced at the S.W. cor. N<sup>o</sup> 54 in Blk 3. B.S. & 7 surveys, a large md of stone in the valley of a branch whence a 11" in hae. & the stump of another (orig brng) are N 10 W 8. varas. Thence S 87 1/2° E (Var 10° 52' E) at 1900 vs made search for the Buffalo head, but none found, in all 3908 vs to the S.W. cor N<sup>o</sup> 56 a large pile of stone (old md). Thence S 87 1/2° E. 1932 vs to an old md of stone, the S.W. cor. of N<sup>o</sup> 57. Thence S 87 1/2° E 1917 vs to an old md of stone in Valley of little Cretone Cr <sup>the S.E. cor N<sup>o</sup> 57,</sup> 2177 vs S. of the the S.E. cor. of N<sup>o</sup> 58 of said Blk 3 B.S. & 7 surveys. Thence S 87 1/2° E at 950 vs made a md of stone for the S.E. cor. No. 27, at 1000 vs passed an old md of stone in Valley of said Cr. in all 1900 vs & made a md of stone for N.E. cor N<sup>o</sup> 59. Thence S. 3800 vs. to a point for S.E. cor. N<sup>o</sup> 60 of said B.S. & 7 Blk N<sup>o</sup> 3. & N.E. cor. of N<sup>o</sup> 22 in name of R.M. Thompson. Thence S 2 1/2° W 1900 vs to point for

(3)

THE STATE OF TEXAS.



King

County

COUNTY OFFICERS:

- A. C. TACKITT, County Judge.
- R. S. DAVIDSON, District and County Clerk.
- W. M. MOORE, Sheriff and Tax Collector.
- J. T. SAYERS, Tax Assessor.
- J. H. LYNN, Treasurer.
- A. L. DUSEN, County Attorney.

COMMISSIONERS:

- R. H. RAY, - - - - - Precinct No. 1.
- G. W. GAYLER, - - - - - Precinct No. 2.
- C. A. HAMRICK, - - - - - Precinct No. 3.
- T. C. LOWRY, - - - - - Precinct No. 4.

GUTHRIE, TEXAS, ..... 190.....

N.E. Cor N<sup>o</sup> 21 in name of R.M. Thompson. Thence S 2 1/2° W 1265 rns to the N. line of N<sup>o</sup> 11 in Blk "F" of N & T.C.R.R.C<sup>o</sup>, 3186 rns S 89 3/4° W from the N.E. Cor of N<sup>o</sup> 10 of said N & T.C.R.R.C<sup>o</sup> Blk as set up by State Survey of G.M. Williams.

July 24<sup>th</sup> 1901 - Commenced at the N.E. Cor. of Block "F" which is also the N.E. Cor. Survey N<sup>o</sup> 10 of said Block "F." N & T.C.R.R. Survey, as set up by State Survey of G.M. Williams, from which the cor. set up by Sam Chalkers 8792 67 rns, and a cor. set up by Kerr 8792 67 rns, there were also several bearing trees to this cor. m'd "W"; The Variation at this corner was found to be 11° 30' E, from this corner I ran:

Thence <sup>due</sup> North (at 2400 rns the var. had changed to 11° 24' E) in all 2886 rns and made a large md of stone for the N.E. Cor. of Tho's Todd Survey & S.E. Cor. of W<sup>m</sup> E. Roberts Survey

Thence due North, at 300 rns the var was 11° 12' E, at 1600 rns, the var was 10° 50' E., at 2300 rns Little Croton Creek (C<sup>o</sup> E) at 2330 rns recrossed sd creek (C<sup>o</sup> W), at 2480 rns enters said creek when it changes its course from S. to E., leaving said creek at 2550 rns at a high bluff bank, in all 2886 rns to N.E. Cor. Said Roberts Survey, made a cor of Rough Stones & Earth, on flat stone m'd "N.E. - W.R." Var. at this point was 10° 50' E

Thence due North, at 1245 rns crossed N. prong of Croton Creek (C<sup>o</sup> N.E.) counter 29037

THE STATE OF TEXAS.



COUNTY OFFICERS:

A. C. TACKITT, County Judge.  
R. S. DAVIDSON, District and County Clerk.  
W. M. MOORE, Sheriff and Tax Collector.  
J. T. SAYERS, Tax Assessor.  
J. H. LYNN, Treasurer.  
A. L. DUSEN, County Attorney.

COMMISSIONERS:

R. H. RAY, - - - Precinct No. 1.  
C. W. GAYLER, - - - Precinct No. 2.  
C. A. HAMRICK, - - - Precinct No. 3.  
T. C. LOWRY, - - - Precinct No. 4.

King

County

GUTHRIE, TEXAS, ..... 190.....

at 1860 vrs set up a stone on W. End of a high mound in N. Side of Croton Cr. Valley (Var. at this point  $10^{\circ}52'E$ ) in all 2328 varas.

Thence west 558 varas and made a large Md of Stone on high ridge for the S.E. corner of G.W. Leampson Survey and N.E. Cor. of Jesse Axtell Survey.

Thence West at 2328 varas made a large Md of Stone for N.W. Cor. of said Axtell survey & a N.E. Cor. of a vacancy, in all 3292 vrs and made a large Md of Stone for the S.W. Cor. of said Leampson Survey 1124 vrs N. and 150 vrs E. of the S.E. Cor. of N<sup>o</sup> 27, B.S & T. Survey Blk 3, said Md of Stone is 1 vr Sq. & 1 vr high and situated on the W. bank of a small branch that runs S. about 700 vrs into little Croton Creek.

July 26-1901 - Commenced at the S.E. Cor. of said Leampson & N.E. Cor of said Axtell Survey - Thence <sup>due</sup> North (Var  $10^{\circ}52'E$ ) at 1280 Varas made a small Md of Stone on N. side of Guthrie & Benjamin Road, at 2922 vrs crossed S. line of N<sup>o</sup> 26, B.S & T. Survey, 1310 vrs N  $88^{\circ}W$  of its S.E. corner in all 3292 vrs & made a large Md of Stone, the cap stone mke "N.E.-COR.-GWL" for N.E. Cor. of G.W. Leampson Survey

July 26-1901 Commenced at the pile of Stone on N. side of Guthrie & Benjamin Road in the E. line of G.W. Leampson Survey 1280 varas North of ~~the~~ said Leampson S.E. Cor. Thence East (Var.  $10^{\circ}52'E$ ) at 2590 counter 29035

By on G.W. Leampson  
S.W.  
(V)

(5)

THE STATE OF TEXAS.



King

County

COUNTY OFFICERS:

- A. C. TACKITT, County Judge.
- R. S. DAVIDSON, District and County Clerk.
- W. M. MOORE, Sheriff and Tax Collector.
- J. T. SAYERS, Tax Assessor.
- J. H. LYNN, Treasurer.
- A. L. DUSEN, County Attorney.

COMMISSIONERS:

- R. H. RAY, - - - Precinct No. 1.
- G. W. GAYLER, - - - Precinct No. 2.
- C. A. HAMRICK, - - - Precinct No. 3.
- T. C. LOWRY, - - - Precinct No. 4.

GUTHRIE, TEXAS, ..... 190.....

Runs. a md of stone 1928 vs s<sup>W</sup> of the N.E. cor. of N<sup>o</sup> 58 H+G N.R.R.C. and 940 vs N 1<sup>o</sup> E. of a stone set in ground in md of stone for N.E. cor Jno Gibson survey and 1884 vs N 1<sup>o</sup> E of ar md of stone near the N. bank of Croton Cr. for the S.W. cor. of N<sup>o</sup> 55 of H+G N.R.R.C. survey Thence East 1928 varas to a point 28 varas N. of S.E. corner of said survey N<sup>o</sup> 58 & N.E. cor. of N<sup>o</sup> 55 and a common corner of N<sup>o</sup> 56 & 57 in same name. Thence South 28 varas to said cor. a single gyp rock for cor. Whence a Musk Mk "X" (orig. bearing) br N 10<sup>o</sup> E 20 vs, to this cor. I added several marker stones. Thence East 1902 vs to a point 4 vs N. of a flat stone <sup>set in ground</sup> with several small stones around it for the S.E. cor N<sup>o</sup> 57 & N.E. cor. N<sup>o</sup> 56 of said H+G N.R.R.C. survey Thence North at 778 vs passed about 45 vs E. of the S.W. cor. of N.A. Cox survey in all 1942 vs to a point 12 vs E. of a large md of stone (old md) for the N.E. cor. of <sup>said</sup> N<sup>o</sup> 57. Thence North, from said N.E. cor., 564 vs to the N.W. cor. of R.A. Mounts survey Thence East 360 vs. Thence North 962 vs to a point 25 vs W. of the S.E. cor. of N<sup>o</sup> 83 in name of J.B. Pector, said Pector S.E. cor. having heretofore been set up by me 3800 vs S. of the S.E. cor. N<sup>o</sup> 81 in same name, which last mentioned cor. is well established on the ground with original bearings.

R.A. Cox N.E. cor. N 57

Buzzards Peak



Dep 24<sup>th</sup> 1901. Commenced at the W. Cor. of N<sup>o</sup> 1 in name of J.G. Eustis, near Buzzards Peak, said cor. being a md of stone on base counter 29036

THE STATE OF TEXAS.



King

County

COUNTY OFFICERS:

- A. C. TACKITT, County Judge.
- R. S. DAVIDSON, District and County Clerk.
- W. M. MOORE, Sheriff and Tax Collector.
- J. T. SAYERS, Tax Assessor.
- J. H. LYNN, Treasurer.
- A. L. DUSEN, County Attorney.

COMMISSIONERS:

- R. H. RAY, - - - Precinct No. 1.
- G. W. GAYLER, - - - Precinct No. 2.
- C. A. HAMRICK, - - - Precinct No. 3.
- T. C. LOWRY, - - - Precinct No. 4.

GUTHRIE, TEXAS, ..... 190.....

of a high hill whence Kiowa Peak is S 6 3/4 W and Buzzards peak is N 34 1/2 E.  
 Thence N 45 E at 620 vrs crossed a branch with Gyp water in it, at 1200 vrs passed the  
 E. point of the 2nd bench of Buzzards Peak, at 1500 vrs crossed Br. in all 1938 vrs  
 to a pile of flat stone, one with marks on it, but not plain enough to designate  
 the letters intended to represent,

Thence S 45 E at 2043 vrs a point 33 vrs S 45 W. of the E. Corner of said  
 Eustis survey, from said cor. a lone 14" mark. is S 84 E 305 vrs, and a small  
 portion of top of Kiowa peak can be seen, being S 14 W. and Buzzards peak is N 64 1/2 W  
 Thence, from said E. Cor., S 45 W at 400 vrs edge of cedar brakes, in all  
 1971 vrs to a point 45 vrs N 45 W. of the S. Cor. of said Eustis survey  
 said cor. being a large pile of Gyp rock one marked "P & E" and a cedar marked  
 "X" (old marks) is S 80 W 1 1/2 vrs, from a small round knob 20 vrs N. of the cor. Buzz-  
 yards peak is N 16 1/2 W. 'Did not run this W. line of this survey, but from a point  
 188 vrs N 45 W. of its S. Cor. the W. Cor. is N 45 1/2 W. (Note - The call for objects on the  
 N. W. & S. E. lines of this survey were not given in the Working Sketch from Gilbond  
 Office but were found in original field notes as recorded in surveyor Office in King  
 Co. I found the objects on ground almost identical with the calls in field notes  
 but object varying therefrom, one distance to br. calls to be 1480 vrs, I found it  
 on ground <sup>to be</sup> 1500 vrs). From the N. Cor. of said Eustis survey N 1

Eustis Survey to Buzzards Peak on

2) I ran: Thence N 45 W at 1456 vrs passed 439 vrs S 45 W of a  
 counter 29037



THE STATE OF TEXAS.



# King County

COUNTY OFFICERS:

- A. C. TACKITT, County Judge.
- R. S. DAVIDSON, District and County Clerk.
- W. M. MOORE, Sheriff and Tax Collector.
- J. T. SAYERS, Tax Assessor.
- J. H. LYNN, Treasurer.
- A. L. DUSEN, County Attorney.

COMMISSIONERS:

- R. H. RAY, - - - Precinct No. 1.
- O. W. GAYLER, - - - Precinct No. 2.
- G. A. HAMRICK, - - - Precinct No. 3.
- T. C. LOWRY, - - - Precinct No. 4.

GUTHRIE, TEXAS, ..... 190.....

a Md of Stone, said to be recently set up by surveyor -- Kerr, for the N. Cor of survey N° 6 in name of R. M. Thompson, in all 1900 vs. <sup>(North Cor. Sur 6)</sup> (no cor. found), Thence N 45 E at 1350 vs crossing little Craton Cr., at 1518 vs crossed the S.W. line of H.E. Browder 160 acre survey 432 vs N 45 W. of its S. Cor. (said S. Cor. being a Md of Stone around a post in the Valley of a branch, whence a cedar (original bearing) bs S 60 E 10 vs & a new Md of Stone placed by Kerr - bs S 45 E 20 vs in all 2750 vs to said Browders N.E. fence.

Thence N 45 W 1420 vs - Thence N 45 E. at 836 vs crossed the E. line of T.V. Gordon survey 135 vs N 45 W of its S.E. cor, in all 2750 vs to a large Md of Flat stones covered up with a Rats nest under a Cedar bush, on Stone Marked <sup>with old marks,</sup> thus: "E. 2." for the E. Cor. of survey N° 2 A. B & M survey, from said Cor a new Md of Stone set up by Kerr bs N 59 W 38 vs

Thence N 45 W, from Old Cor. at 477 vs passed 1 1/2 vs S 45 E. of the W. Cor of Holley's 80 acre survey and the S. Cor. of Glovers 80 acre survey, a stone 2 feet long for cor., at 958 vs passed 6 vs S 45 W. of S. Cor. of J. B. Townsend 160 acre survey a cedar stake set in ground for cor. at the S. Cor. of said Townsends Old fence, in all 1910 vs to a point 3 vs S 45 W. of the Original W. Cor. of said survey at the W. Cor. of said Townsends old fence, from whence

THE STATE OF TEXAS.



King

County

COUNTY OFFICERS:

- A. C. TACKITT, County Judge.
- R. S. DAVIDSON, District and County Clerk.
- W. M. MOORE, Sheriff and Tax Collector.
- J. T. SAYERS, Tax Assessor.
- J. H. LYNN, Treasurer.
- A. L. DUSEN, County Attorney.

COMMISSIONERS:

- R. H. RAY, - - - Precinct No. 1.
- G. W. GAYLER, - - - Precinct No. 2.
- C. A. HAMRICK, - - - Precinct No. 3.
- T. C. LOWRY, - - - Precinct No. 4.

GUTHRIE, TEXAS, ..... 190

a mound of Stone shows to have been recently moved, and a new md of Stones brs N 62 1/2 W 58 vs.

Thence N 45 E. at 800 vs passing the E. Cor. of the C. W. Deavenport survey at old fence cor. at 967 vs passing the N. Cor. of said Townsend survey a large Cedar post in a stone md for Cor, in all 992 vs and made a md of stone in the S. line of Survey N<sup>o</sup> 178 R. M. T. 312 vs W. of its S. E. Cor.

Commenced at the E. Cor. of said Deavenport survey. XX

Thence N 45 W 435 vs to N. ~~E.~~ Cor. of said survey a large cedar post set in ground for Cor.

Thence S 45 W 250 vs to the D. line of said R. M. T. Survey N<sup>o</sup> 178, 277 vs E. of its N. W. Cor, as set up by me 3800 vs S. of the S. E. Cor. of N<sup>o</sup> 80 J. P. R.

Thence S 45 W with the N. W. line of said Deavenport survey, with fence, 1827 vs to the W. Cor. of said survey a md of stone about 20 vs N. of the Dulles & Benjamin's Road, whence a new md of stones brs N 62 1/2 W 71 vs.

Thence S 45 E 485 vs to a md of stone for S. Cor. said Survey, on the N. W. line of said N<sup>o</sup> 2 A. B. M.

Thence S 45 W 624 varas to a point 1 vara N 45 W. of an old md of Flat stones the bottom one MK'd thus; "W. 2." for the W. Cor. of said N<sup>o</sup> 2 A. B. M. whence a new mound of Stones brs N 67 W 65 vs.

(9)

Counter 29039

C. W. Deavenport survey  
line on

THE STATE OF TEXAS.



King

County

COUNTY OFFICERS:

- A. C. TACKITT, County Judge.
- R. S. DAVIDSON, District and County Clerk.
- W. M. MOORE, Sheriff and Tax Collector.
- J. T. SAYERS, Tax Assessor.
- J. H. LYNN, Treasurer.
- A. L. DUSEN, County Attorney.

COMMISSIONERS:

- R. H. RAY, - - - Precinct No. 1.
- G. W. GAYLER, - - - Precinct No. 2.
- C. A. HAMBICK, - - - Precinct No. 3.
- T. C. LOWRY, - - - Precinct No. 4.

GUTHRIE, TEXAS, ..... 190.....

Thence from said <sup>w</sup> cor. of N<sup>o</sup> 2., S. at 142 vs pass 13 vs E. of a Md. of Gyp Rock  
 the N.W. cor. of J.V. Gordon survey in all 676 vs to the N. line of L.D. Hensley survey  
 168 vs W. of its N.E. cor. and 13 vs E. of a S.W. cor. of said Gordon survey.

only on

Thence West at 13 vs passing said Gordon Cor. at <sup>131</sup> passing S.E. cor N.A. Cox  
 survey a Md. of stons, at 785 vs pass the N.W. cor. of L.D. Hensley survey, in all  
 1140 vs to a point in E. line of N<sup>o</sup> 57 N.Y.G. N.R.R. Co survey 778 vs N. of its S.E.  
 cor.

— Remarks:— Covering the entire area in which the surveys, as described  
 in the foregoing field notes, was made, there is to a greater or less extent, disturbance  
 of the Magnetic needle, in so much in some localities that measurement will  
 be more reliable than <sup>Needle</sup> Courses. The changes in variation of Needle noted  
 by me on a common straight line of 10 miles in length being as much  
 2 1/4, . In surveys made by me from 10 to 30 miles N.E. of Guthrie  
 the Co site, of King Co, there was but slight disturbances of the magnetic  
 needle, and following is a statement of a portion of the work done by  
 me in that locality, in connection with the Masterson, Richards and  
 Balliff files, .

On July 12-1901, I commenced at the S.E. cor. of Burleson survey & S.W.  
 cor. of J.V. Massie survey N<sup>o</sup> 1 a stone mkd J.B. & set in ground for corner  
 counter 29040

THE STATE OF TEXAS.



## COUNTY OFFICERS:

A. C. TACKITT, County Judge.  
 R. S. DAVIDSON, District and County Clerk.  
 W. M. MOORE, Sheriff and Tax Collector.  
 J. T. SAYERS, Tax Assessor.  
 J. H. LYNN, Treasurer.  
 A. L. DUSEN, County Attorney.

## COMMISSIONERS:

R. H. RAY, - - - Precinct No. 1.  
 G. W. GAYLER, - - - Precinct No. 2.  
 C. A. HAMRICK, - - - Precinct No. 3.  
 T. C. LOWRY, - - - Precinct No. 4.

King

County

GUTHRIE, TEXAS,.....190.....

Thence E. 1906 vs to N.W. cor N<sup>o</sup> 3 J. W. M. original cor. found a stone mkd X  
 Thence E. (Var. found to 10° 10' E on this line) 1898 vs to stone set in ground the N.E. cor d. Massie.  
 Thence E. 1907 vs to a stone set in ground mkd X (orig cor).. Thence E. 1912 vs to the N.W. cor  
 N<sup>o</sup> 14 D & W. R. R. Co. 2 stones set in ground no marks visible,  
 Thence S. 3820 vs to a large stone marked "N.W. 18" for N.E. cor N<sup>o</sup> 17. D & W. R. R. Co. sur.  
 Thence W. 1914 to a point 6 vs N. of the N.W. cor said N<sup>o</sup> 17 a stone mkd X for cor  
 Thence, from said cor, W. 1909 vs to a stone mkd X.  
 Commenced at the N.E. cor. of said N<sup>o</sup> 17 D & W. R. R. Co. sur.  
 Thence South 1900 vs to a large stone mkd "S.W. 18" for S.W. cor survey  
 N<sup>o</sup> 18 D & W. R. R. Co. in the Valley of Middle fork of Wichita River.  
 Thence South 1900 vs as + made a md of small stones for S.W. cor J. J. R. R. Co.  
 survey N<sup>o</sup> 1, (no bearings found) for this cor).  
 Thence S 1204 vs to the N. <sup>line</sup> ~~line~~ of survey N<sup>o</sup> 16 in name of R. M.  
 Thompson.  
 Thence W. 267 vs to the N.W. cor. of said N<sup>o</sup> 16 R. M. S. . Thence S. 396 vs to  
 a point due East of the S.W. cor. of Donabegans N<sup>o</sup> 12.. Thence W. 211 vs  
 to said Beagans S.E. cor. an old md of stone, whence a mullkey maked "X" (old  
 marks) vs S 60 W 100 vs.

Commenced at the N.W. cor N<sup>o</sup> 37 R. M. S. a large md of Stone  
 (11) Counter 29091

THE STATE OF TEXAS.



King

County

COUNTY OFFICERS:

- A. C. TACKITT, County Judge.
- H. S. DAVIDSON, District and County Clerk.
- W. M. MOORE, Sheriff and Tax Collector.
- J. T. SAYERS, Tax Assessor.
- J. H. LYNN, Treasurer.
- A. L. DUSEN, County Attorney.

COMMISSIONERS:

- R. H. RAY, - - - Precinct No. 1.
- G. W. GAYLER, - - - Precinct No. 2.
- C. A. HAMRICK, - - - Precinct No. 3.
- T. C. LOWRY, - - - Precinct No. 4.

GUTHRIE, TEXAS, 190

whence a Mack S69W 12 vs + a Mac N49E 21 vs (orig brngs).

Thence N. 1913 vs to the B.W. cor. said N° 16 R.M.T., a large stone in Willow Cr Valley.

Thence N. 1481 vs to a point due E. of the S.E. cor. of Sam Logans N° 12

Thence W. 211 vs to said cor. as above described.

Commenced at ~~and~~ the N.E. cor N° 27 <sup>see sketch which verifies this connection</sup> + N.W. cor N° 28 H & N R.R. Co., an old

Rocky falls

md of stone in the head of a ravine at s. edge of Willow Cr. Valley whence a Mack 6 S 67 1/2 E 25 vs, (the Mac. not found). Thence east at 850 vs the center of the Rocky falls in Willow Creek (which is about 40 vs wide at this point) at 1480 vs in said cr (C° N80E, in all 1900 vs to the S. Bank of said Cr. when the bank is a Rocky Bluff (no bearing found). Thence East 1900 vs to a <sup>point on</sup> high Ridge of Rock (no bearing found)

Thence E. 1900 vs, crossing Willow Cr, to a point on N. bank of said creek,

Thence N. 1900 vs to the S. line of said Logans N° 12. 73 vs W. of its S.E. cor.

Thence East 73 vs to said Logans S.E. cor. whence the Mulbery ls S60W 100 vs.

Commenced at the N.E. cor <sup>of which</sup> N° 13 + N.W. cor N° 14 of D & W R.R. Co. - see.

Thence N. 1900 vs + set stone for the S.E. cor of ~~H & N R.R. Co~~ N° 7 in name of D & W. R.R. Co. Thence N. 1900 vs + set up a stone in the Shimmins for the N.E. cor said N° 7 + N.W. Cor. N° 8 of some name. (no bearing found)

Thence E. 1900 vs + made a large md of stone for N.E. cor said N° 8

THE STATE OF TEXAS.



King

County

COUNTY OFFICERS:

- A. C. TACKITT, County Judge.
- R. S. DAVIDSON, District and County Clerk.
- W. M. MOORE, Sheriff and Tax Collector.
- J. T. SAYERS, Tax Assessor.
- J. H. LYNN, Treasurer.
- A. L. DUSEN, County Attorney.

COMMISSIONERS:

- R. H. RAY, - - - Precinct No. 1.
- G. W. GAYLER, - - - Precinct No. 2.
- C. A. HAMRICK, - - - Precinct No. 3.
- T. C. LOWRY, - - - Precinct No. 4.

GUTHRIE, TEXAS,.....190.....

and N.W. Cor. N° 11 of D & W Ry. Co survey. Thence E. 1900 vs + made a large Md of stone on <sup>S</sup>Hillside 827 vs S. and 237 vs E. of the S.W. cor. of N° 55 in name of F. P. Knott for the N.E. cor. of said N° 11 + N.W. Cor. N° 163 in name of R.M. Thompson.

Thence E. at 1540 vs passed 66 vs N. of a Md of stone for the S.E. cor. of G.W. Gayler's Preemption,, in all 1900 vs to the N.E. cor. of N° 164 in name R.M. Thompson whence an old stone md 1 vs sq. + 1 1/2 vs high by E. 42 vs

July 17-1901. Commenced at a spring on the E. side the Middle fork of Wichita River about 100 vs S.E. of where the old Military Road crosses same, having been directed to said point by J.H. Glasgow, ~~as being the~~ the surveyor who located the R.M. Thompson surveys N°s from 165 to 168, as being the spring in the E. line of survey 44 + W. line of N° 43 R.M. from which he located said Thompson surveys.,

From said spring I ran. Thence S. at 160 vs crossed the old "Military Road" (C° S 20 E + N 20 W) in all 466 vs to an old + large pile of stones for the S.W. Cor said N° 43 + S.E. Cor N° 44

I again Commenced at said spring + ran. Thence N. at 250 vs crossing said Middle fork of Wichita River at 835 vs, a point 190 vs W. of said River and 370 vs as W. of a stone set in ground + marked "S" at 1100 vs crossed a Spring br. Co E. in all 1436 vs to 3 large stones  
 (13) counter 29043

THE STATE OF TEXAS



King

County

COUNTY OFFICERS:

- A. C. TACKITT, County Judge.
- R. S. DAVIDSON, District and County Clerk.
- W. M. MOORE, Sheriff and Tax Collector.
- J. T. SAYERS, Tax Assessor.
- J. H. LYNN, Treasurer.
- A. L. DUSEN, County Attorney.

COMMISSIONERS:

- R. H. RAY, - - - Precinct No. 1.
- G. W. GAYLER, - - - Precinct No. 2.
- C. A. HAMRICK, - - - Precinct No. 3.
- T. C. LOWRY, - - - Precinct No. 4.

GUTHRIE, TEXAS, ..... 190.....

Military Road Survey

Laying one upon another for the N.W. cor. of said survey N<sup>o</sup> 43 and the S.E. N<sup>o</sup> 47 B.S. & F. survey, said corner being between the said "Military Road" and the middle fork of Wichita River, the River being on the E, and said Road on the West side of same, to this cor. I added several more stones, (no beams found).

Thence N. at 1600 vs crossed Forrest Creek (Co S.E.) in all 1902 vs to a point 2 vs W. of an old md of small stones on the E. bank of a small branch (Co S.W.) to this I added a few flat stones,

Thence N. 1900 vs + made a md of stones for the N.W. cor N<sup>o</sup> 54 N.E. cor N<sup>o</sup> 48. of said B.S. & F. surveys. Thence N 719 varas to S. line of N<sup>o</sup> 43 in name of F.P. Knott 1004 vs W. of its S.E. cor. Thence W 926 vs to the S.W. cor. of said N<sup>o</sup> 43 a very large md of stone on top of a high Mountain.

I commenced at the N.E. cor of said N<sup>o</sup> 47, B.S. & F. - Thence W. at 805 vs crossed said Forrest Creek, at 1425 vs crossed spring br<sup>(Co N.)</sup> about 30 vs below a spring at 1865 vs passed the S.E. cor. of E.L. Ribble Preemption in all 1900 vs + set up to stones, one md "N.B. 47" + one "N.E. - 168".

Thence West 5700 vs to the N.W. cor. of N<sup>o</sup> 166 + N.E. cor. N<sup>o</sup> 165 R.M. Thompson surveys 850 vs S. + 100 vs N. of the N.E. cor. of N<sup>o</sup> 164 of same name.

THE STATE OF TEXAS.



King

County

COUNTY OFFICERS:

- A. C. TACKITT, County Judge.
- R. S. DAVIDSON, District and County Clerk.
- W. M. MOORE, Sheriff and Tax Collector.
- J. T. SAYERS, Tax Assessor.
- J. H. LYNN, Treasurer.
- A. L. DUSEN, County Attorney.

COMMISSIONERS:

- R. H. RAY, - - - Precinct No. 1.
- G. W. GAYLER, - - - Precinct No. 2.
- C. A. HAMRICK, - - - Precinct No. 3.
- T. C. LOWRY, - - - Precinct No. 4.

GUTHRIE, TEXAS, ..... 190.....

July 18-1901. Commenced at the N.E. cor. of B.S. & F. N° 47.

Thence E. ~~at~~ 1900 vs to N.E. cor. N° 49. Thence E. at 630 vs the W. bank of Mid. fork of Wichita River (Co. N.) at 1015 vs passing 670 vs S. of the S.W. cor of F.P. Knot <sup>2. 48 at 950 vs passed about 125 vs N. of 11 miles of River</sup> survey N° 47 in all 1900 vs to the N.E. cor. of N° 51 B.S. & F. survey, built a large Md of stone in the Valley of said River 100 vs S. of same. Thence E. at 1140 vs leaving said River Valley at the foot of a steep Rocky Bluff at 1186 vs the top of said Bluff, in all 1900 vs & made a large Md of stone for the N.E. Cor of N° 52 of B.S. & F. survey Thence East 250 vs to E. line of W.J. Montgomery survey N° 156 - Thence S. 5278 vs to a point for the inner ~~cor.~~ of N° 154 W.J.M. survey. Thence East 776 vs to a point 1541 vs N. of the N.E. Cor. of J.B. Pector survey N° 66.

Aug 4-1901 - Commenced at the S.E. cor. of N° 66 in name of J.B. Pector a Md of large flat stones at E. base of a hill - Thence N. ~~at~~ 1525 vs to the N.W. cor. of N° 76 J.B. Pector survey a Mark Stake in a Md of stones the large Valley of Baby Cr. a 12" Hac (orig brng) br S 30W 90 vs and group of Hac (Dead) (orig brng) br N 65W 40 vs - Thence N. 403 vs to the N.E. cor of said N° 66 J.B.P. a stone set up in a Md of stone 43 vs E. of a br. whence a Hac (orig brng) br N 82W 40 vs. Thence N. 1541 vs to N.E. cor N° 154 W.J.M. survey 776 vs E. of its Cor.



THE STATE OF TEXAS.



## COUNTY OFFICERS:

A. C. TACKITT, County Judge.  
 R. S. DAVIDSON, District and County Clerk.  
 W. M. MOORE, Sheriff and Tax Collector.  
 J. T. SAYERS, Tax Assessor.  
 J. H. LYNN, Treasurer.  
 A. L. DUSEN, County Attorney.

## COMMISSIONERS:

R. H. RAY, - - - Precinct No. 1.  
 G. W. GAYLER, - - - Precinct No. 2.  
 C. A. HAMRICK, - - - Precinct No. 3.  
 T. C. LOWRY, - - - Precinct No. 4.

King

County

GUTHRIE, TEXAS,.....190.....

Oct 1-1901- Commenced at a Md of Stone painted out to me as being the N.W. cor. of survey N° 123 Blk 44 H & S. R. R. Co & also the N.E. & beginning cor. of survey N° 1 Blk 1 H & S. R. R. Co, whence a Hac. Mkd X (marks apparently about 10 year old) bs N 12 W 20 vs (no other bearing found).

Thence S. at 1140 vs passing 338 vs W. of a Md of Stone on E. side of a small br. from said cor. a Hac bs S 50 3/4 E 22 vs & a Cedar bs N 85 3/4 E 26 vs, in all 1948 vs to a point 11 vs E. of a large Md of Stone at the head of a ravine (C° S 10 E) (Corrected Var. to 10° 10' E correspond with said line. Thence W. at 1894 vs passed 8 vs N. of a stone set in ground for the N.W. cor. N° 2 in name of H & S. R. R. Co <sup>Blk 1.</sup> in all 3800 vs & left a pile of mesquit stakes for N.W. cor. N° 9 & S.E. cor N° 13 of said Blk. Thence N. at 1942 vs passing 12 vs E. of a Md of Stone made by surveyor Bedford for the N.E. cor said N° 13, in all 3843 vs to a large pile of Stone (old md) for the N.E. cor. 12 of said Block, 25 vs E. and 46 vs N. of the S.E. cor. of "3.D" pasture fence.

Commenced at said pile of stakes for the S.E. cor of N° 13.

Thence West 1900 vs. to the S.W. cor. N° 13.

Thence N. at 238 vs passed 37 vs E. of the S.E. cor of M. A. Steele survey in all 2255 vs to a point <sup>vs.</sup> 3 1/2 E. of the N.E. cor of said Steele survey <sup>and</sup> N 130 counter 29046

THE STATE OF TEXAS.



King

County

COUNTY OFFICERS:

- A. C. TACKITT, County Judge.
- R. S. DAVIDSON, District and County Clerk.
- W. M. MOORE, Sheriff and Tax Collector.
- J. T. SAYERS, Tax Assessor.
- J. H. LYNN, Treasurer.
- A. L. DUSEN, County Attorney.

COMMISSIONERS:

- R. H. RAY, - - - Precinct No. 1.
- G. W. GAYLER, - - - Precinct No. 2.
- C. A. HAMRICK, - - - Precinct No. 3.
- T. C. LOWRY, - - - Precinct No. 4.

GUTHRIE, TEXAS, ..... 190.....

W. of Spring Creek.

Commenced at the S.E. Cor. of Said Ma Steele Survey, which is a large Md of Stones, with original beams in position.

Thence W. 1920 vrs to a point 33 vrs S. of the S.W. Cor. of Said Steele Survey, which corner is a large Md of Stone in the Valley of the E. prong of Baby Creek about 20 vrs W. of said Creek and 60 vrs W. of an Old Rock House, each of the original bearing trees in position as called for, in field notes. From Said Steele S.W. Cor.

Thence S. 2500 varas to the N. line of N<sup>o</sup> 76 in name of W. J. Montgomery 715 vrs E. of its N.W. Cor. and 57 vrs W. of where it is crossed by the W. line of N<sup>o</sup> 6. T & N. O. R.R.C<sup>o</sup> survey.

-Remarks:- Regarding the location of surveys in Blk I H & G. R.R.C<sup>o</sup> will say in addition to the lines above mentioned as run by me, that I made a complete survey of the Creeks and branches in Said Block, and find that the total Northings & Southings of Spring Creek & its branches in this block do not exceed 3 miles, while the working sketch show them to cover 6 miles, and Eastings & Westings do not extend beyond 2 miles on the ground, while the working sketch shows it to cover more than 3 miles in these directions, do I was led to believe the original survey

THE STATE OF TEXAS.



King

County

COUNTY OFFICERS:

- A. C. TACKITT, County Judge.
- R. S. DAVIDSON, District and County Clerk.
- W. M. MOORE, Sheriff and Tax Collector.
- J. T. SAYERS, Tax Assessor.
- J. H. LYNN, Treasurer.
- A. I. DUSEN, County Attorney.

COMMISSIONERS:

- R. H. RAY, - - - Precinct No. 1.
- G. W. GAYLER, - - - Precinct No. 2.
- C. A. HAMRICK, - - - Precinct No. 3.
- T. C. LOWRY, - - - Precinct No. 4.

GUTHRIE, TEXAS, ..... 190.....

of the Creek & its Branches upon this block, were made by the expansive eye of the surveyor while perched upon some pinnacle in that vicinity, and consequently I have allowed course and distance to govern me in making this survey, from the beginning corner of said block, using a variation of 10° 10' E to make it correspond with the corners of Survey N° 123 Blk 44 1445, C. R. R. Co., as found upon the ground.

# 847 103

Oct 3-1901. Commenced at the S.W. cor of N° 84 and original N.W. cor. of No 103, of Blk 44 H & T. C. R. R. Co Survey, a large stone in a md of smaller stones in valley of middle fork of Wichita River about 136 vs N. of said River, <sup>(Co. E)</sup> whence a cedar, the E. prony of which is marked X (old mark) and br S 11 E. 15 vs. From said cor, Thence N. at 310 vs small br. (Co E) at 650 vs passed out of valley at 700 vs was on high ground, at 875 vs crossed br. (Co S E), at 1505 vs. Small br. (Co S. E.) in all 1983 vs to a point 4 vs W, of a large Md of stone in high pr, the N. W. cor. of said sur. N° 84 whence the stump of a Hae. bs 5452 78 vs & a dead Hae. mkt 'X' (old mark) br S 28 E 41 vs, Corrected Var. to fit this line which is 10° 2' E, Commenced again at the S.W. cor said N° 84 & N.W. cor of N° 103, and

(18) counter 29078

THE STATE OF TEXAS,

J. T. SAYERS

Tax Assessor King County

KING

COUNTY.



Guthrie, Texas,

190

offset West 157 vs to avoid bend of River in running S.

Thence S. at 380 vs passed about 60 vs W. of the W. high bluff bank of said River at a bend in same, at 1430 vs, in bed of said River (Co 880 E), at 1700 vs crossed a cutoff of said River combined with a large Creek (Co 8.) in all 1900 vs & and offset back E. 157 vs to the line S. of S.W. Cor of said 84. (no cor. found)

Thence S. at 260 vs crossed said Cr. (Co N.W.) at 1796 vs made search for S.W. & S.E. corner of Survey No 102 Blk 44. (as Connected) no cor. found in all 1900 vs & made search for S.E. Cor. N. 2 H & G. N. R.R. Co. <sup>Blk 'P.'</sup> (no cor. found). Thence 1994 vs to a point 192 vs W. of the N.E. cor. of No 12. blk 1 H & G. N. R.R. Co. an old Md of Stone for said cor. Commenced at said Stone Md, the N.E. Co. said No 12.

Thence W. 1900 vs & made a Md of Stone in Spring Creek Valley for the N.W. cor. of said No 12 - Thence W. 192 vs to the E. line of No 9 in said Blk 'P.' - Thence North 94 vs & made a Md of Stone for the N.E. Cor of said Survey No 9 & S.E. Cor. of No 8 of said Blk 'P.'. Thence W. at 110 vs crossed Spring Cr. (Co N.W.), at 1225 vs crossed Baby Cr (Co N.) in all 1900 vs & made a large Md of Stone for the N.W. Cor said Survey No 9 & N.E. Cor No 10 of said Blk 'P.'. Thence W. at 1392 vs crossed the E. line of W. J. Montgomery Survey No 155, at 1642 vs crossed the E. line of No 52 B.S. & F. Survey, 1153 vs counter 29049

1200 P. 479 x 479  
 1200 P. 479 x 479  
 1200 P. 479 x 479

J. T. SAYERS

Tax  
Assessor  
King  
County

THE STATE OF  
TEXAS,

KING  
COUNTY.



Guthrie, Texas, \_\_\_\_\_ 190\_\_\_\_\_

10 BIR P. 171 W  
S. of its N.E. corner, in ~~Allen~~ 1900 vs & made a large md of stone for the N.W. cor  
of said N<sup>o</sup> 10 - Thence S. 1900 vs & made a md of stone for the S.W. cor. said  
survey. Thence E. at 258 vs crossed E. line of N<sup>o</sup> 54. B.S.V. 772 vs  
N. of its S.E. cor. at 508 vs crossed the E. line of N<sup>o</sup> #155 <sup>R. M. Thomas</sup> W. J. Montgomery  
survey, in all 1900 vs to a md of stone in Baby Cr. Valley 25 vs W. of said  
creek and 150 vs W. and 262 vs S. of the N.W. corner of Marya Stele  
survey, (said Marya Stele corner are each well established on the ground  
with large stone monuments and original bearings in position).

→ 'Survey of J. F. Knott Block':

Aug 2<sup>nd</sup> 1901 - Commenced at the S.W. cor. of N<sup>o</sup> 43 of J. F. Knott survey  
a large stone monument on top of a high mountain, whence a Hac. Mkd  $\bar{x}$  (old  
marks) vs N 12 W 16 vs - (found the the var. required to run the line to in this  
Blk. to be 10<sup>o</sup>  $\frac{1}{2}$  E. which var I used),

Thence East 1930 vs to the S.E. cor of said N<sup>o</sup> 43, a pile of Gyp rocks  
for cor. Thence E 1930 vs to a large md of flat stone in valley of  
Wild Horse Creek, whence a 9" Hac (orig brdy) vs N 25 W 54 vs, this cor. being  
the S.E. cor of N<sup>o</sup> 44 & S.W. cor. N<sup>o</sup> 45. F.P.K. survey -

Thence N. 1900 vs, no cor found. Thence E. 1922 vs to a point 15 vs  
S. of the N.E. cor. of N<sup>o</sup> #5, crossing Cr. at 1390 vs, said cor. is a large md of  
stone with original bearings in position.

J. T. SAYERS

Tax  
Assessor  
King  
County

THE STATE OF  
TEXAS,

KING

COUNTY.



Guthrie, Texas,

190

Aug 4-1901.

Commenced again at s.w.cor. of said N° 45 + N.W. cor N° 48.

Thence S. 1950 vs to a point 16 vs E. of the S.W. cor of said N° 48

Said cor being a large stone mkd "X" & set up in a md of stone.

Thence, from said stone mkd "X" for s.w. cor N° 48, S. at 270 vs mid  
fork of Wichita river Co. E. in all 670 vs to a point on N. line of N° 51

B.S. & F. Survey 1015 vs E. of its N.W. cor.

Aug 3-1901 Commenced again at the large Monument on top of Mountain the

s.w. cor. N° 43. Thence W. 600 vs - . Thence S. 1934 vs to a stone

mkd "P.C.-W.P." in a md of stone on E. bank of Forrest Creek, the most southerly  
S.E. cor. of N° 50 J.F.K. sur. . Thence W. at 60 vs cross said Cr. (Co N.E.)

at 375 vs passing 685 vs N. of N.E. cor. of N° 47 A.B.V.M. & N.E. cor 168  
R.M. Thompson surveys, in all 1312 vs to a md of stone the S.E. cor

N° 51. J.F.K. no bearings found. Thence W. at 1435 vs crossing br. (Co N.E.)

in all 1920 vs to md of flat stones for S.E. cor N° 52, 10" Dead Hae S 65 E 10 vs

Thence W. 1930 vs to md stone the S.E. cor. N° 53. 8" msk "X" (orig brng)

N 6 vs and at dead Hae. S 81 E. 6 vs - Thence W. at 1730 vs cross br (Co N.E.)

in all 1932 vs to md of Stone for S.E. cor N° 54 J.F.K.

Thence W. at 1750 vs Crossing Forrest Creek (Co N.) in all 1929 vs an made

a md of stone for S.E. cor N° 55, whence a Hae. W 22 & a do. S 79 W 26 & a do.

S 63 W. 24, Each mkd X. old marks (these bearings are same as shown on Working sketch

(21)

Counter 29051

#40748

#443

THE STATE OF  
TEXAS,

J. T. SAYERS

Tax  
Assessor  
King  
County

KING

COUNTY.



Guthrie, Texas, \_\_\_\_\_ 190\_\_\_\_\_

as being at the S.E. Cor. N<sup>o</sup> 54)

Thence W. recrossing said Cr. (Co S.E.) in all 1900 us. to S.W. Cor. said  
N<sup>o</sup> 55 J. F. K. Survey a large stone in mid of stem in Valley of said Creek, 827  
us N. and 237 us W. of N.E. Cor. of N<sup>o</sup> 11 D & W R.R.C. Survey and N.W.  
Cor R M Thompson Survey N<sup>o</sup> 163..

Remarks—: The variation used by me, in the last mentioned locality,  
does not represent the True Variation of the needle at that point, but was used  
as a matter of convenience to suit the lines which I was running as  
found upon the ground, which variation I found to have decreased  
from the one used, at time of locating the surveys, at the rate of about  
2" pr year - The <sup>True</sup> Var. in the above locality will approximate 10° 50' E.,

At Guthrie, the C<sup>o</sup> Dite of King Co., the Meridian as established  
in Sep. 1901, by the U.S. - C & G Survey, shows the Variation  
at that point to be 10° 55' E., ~~and~~ while the Var. at N.E. Cor. Blk.  
'F.' H & J. C. R.R.C. Survey, showed, on Solar Compass, to be 11° 30' E  
during the month of Aug 1901. — No disturbances, of any consequence,  
of the Magnetic needle were noticed in the N. East portion of this County.

To this is attached, a Map, showing a portion of the work  
done by me, the figures thereon representing distances actually  
found upon the ground, and shows the relative position of surveys

THE STATE OF  
TEXAS,

J. T. SAYERS

Tax  
Assessor  
King  
County

KING

COUNTY.



Guthrie, Texas,

190

to each other, and is made a part of this report  
of Goodfellow  
Surveyor.

State of Texas }  
County of King } D. G. W. Moore, Surveyor of King County,  
having gone over a portion of the work as  
set out in the foregoing report by J. J. Goodfellow, to wit:  
The connection from the N.E. Cor. of N<sup>o</sup> 10 Blk "F" N.V.S. C.R.C. Sur.  
to the S.E. Cor N<sup>o</sup> 58 Blk 3 B.S. 47. Surveys, and the survey of the  
in connection with the Lizzie Upton File; The survey of J. G.  
Eustis Survey N<sup>o</sup> 1 and its connection with R. B. Masterson  
File, together with a resurvey of the N.V.S. C.R.C. Survey N<sup>os</sup>  
55, 56, 57 and 58, Also the resurvey of the A.B. & M. 4 B.S. 47  
Surveys, from the Spring in the W. line of said said Survey N<sup>o</sup> 43  
A. B. & M. <sup>North</sup> to the S. line of N<sup>o</sup> 43, J. F. Knott survey and connection  
with its S.W. & S.E. Cor. necs, also on a connecting line from  
the S.W. Cor. of said A.B. & M. N<sup>o</sup> 43, (466 vs S. of said Spring), East  
to the connection with the S. line of N<sup>o</sup> 10 Blk "P." N.V.S. C.R.C.  
Survey, to ascertain the true & relative position of surveys  
surrounding the W. Q. Richards and H. S. Raliff files, and found  
(23) counter 29053



J. T. SAYERS

Tax  
Assessor  
King  
County

THE STATE OF  
TEXAS,

KING

COUNTY.



Guthrie, Texas, \_\_\_\_\_ 10

the same correct as represented in said report, which is hereby  
approved and Recorded in my Office in Vol \_\_\_\_\_ on  
Pages \_\_\_\_\_ 250 to 264

Given under my hand in Office

This the \_\_\_\_\_ Day of October 1901

G. W. Moore  
County Surveyor  
King Co Texas

- Note - The dotted lines on the Map here to attached, on surveys No 43, 49, 44 & 47  
a, B & M & B, S & F, surveys, are made to show where & how a survey would  
be placed, if surveyed from the stones "M & C" "S," as found upon the  
ground, which <sup>stones</sup> do not in any way correspond with <sup>the original corners either</sup> ~~any~~ of <sup>located</sup> ~~any~~  
surveys or markings, as found upon the ground, in connection with Spring  
on the E. line of said A, B & M, survey No 43.

G. W. Moore  
Co. Surveyor  
King Co.

Sketch File

No. 1

see sketch 7  
King Co 5 Sketches

Statement J. J. Goodfellow  
and G. W. Moore, Co. Sur-  
veyor King Co.

Filed in Genl. Land  
Office 10/15/1901  
Wise

See Blue print sketch  
filed with this -

See sketch & connecting  
line by A. D. Kern filed  
6/13/02 - Condoverberg

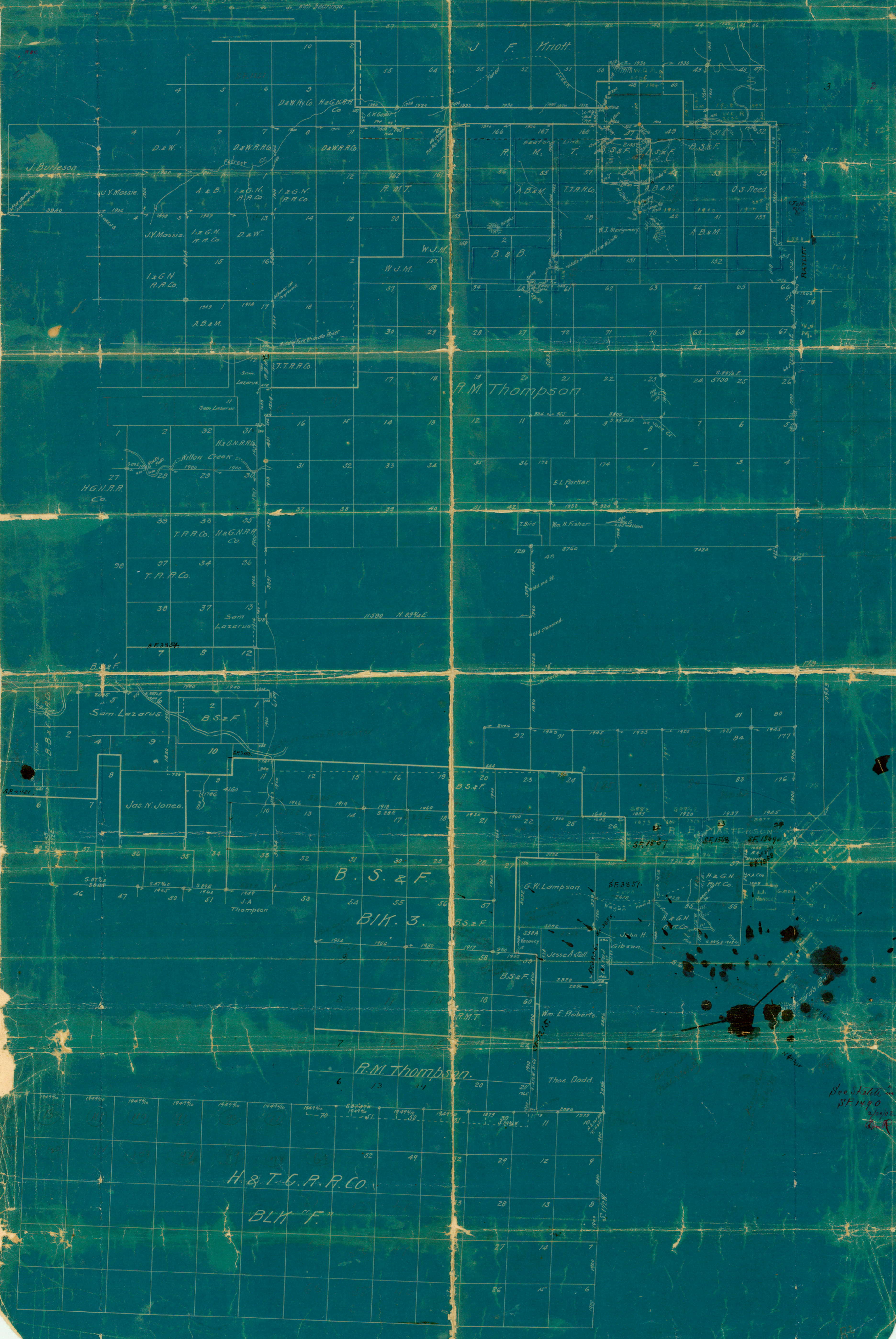
(25)

quarter 29055

MAP of a Portion of KING and COTTLE COUNTIES.

connecting line  
See sketch by A.D. Kern  
dated 6/13/02. Bond Number

Note. - o Indicate original corners found  
do. with bearings.



See sketch  
SF 1490  
2/20/02  
A.T.