

5187

Uvalde, Texas, July 16, 1927.

RECEIVED

JUL 18 1927

REFERRED TO MAP

Hon. J.T. Robison,
Austin, Texas.

Dear sir:

I enclose corrected field notes of twelve surveys of land in Block M, Kinney County, Texas, and notes of East part of Survey No. 56, same block, together with plat of same.

You will note from the plat, that I found all of the marked corners on these surveys, except the S.W. corner of Survey No. 73, and the S.W. corner of Survey No. 74. I made a very extended search for these two corners, but I was unable to find them.

I also failed to find any rk.md. at the S.E. corner of Survey No. 71, so I re-located this corner by intersection of a due East line from the S.W. corner of 71 and a line N.32° W. from center of a rk.bluff on a conical hill, which was no doubt the original bearing, as there is no other bluff in sight.

At the N.E. corner of Survey No. 53, I found old rk.md on side of a drain at foot of a hill and stump of a cedar N.46½ W. 30 vrs. and a cedar on a distant bluff S. 32 W..

At the N.W. corner of No. 53, found old rk.md. and cedar 8" S.3½ W 11½ vrs. this cedar is dead and lying on ground; found also, limbs and burned trunk of a cedar N.76 W. 10½ vrs.

At the N.W. corner No. 49, found old rk.md. on hill at the head of a ravine, cluster of pines on North side of a ravine brs. N.57½ W about 80 vrs. dead pine, now lying on ground, S. 58 E. about 140 vrs.

The balance of the original corners are described in the field notes just as I found them.

I located the Southern boundary of these Surveys from corners which were re-established by the New York & Texas land Company Surveyors, along the boundaries of the I & G.N.Blocks, I found their iron pipes at N.W. No. 59, the N.E. No. 59, the N.W. No.6, the N.E. No. 6. The pipes called for in field Notes at N.E. No. 58, the N.E. No. 5 and the S. No. 5 have been removed, but I found old rk.md. at these corners. The boundary between Blk. M and the I & G.N.Blocks is a property line and fence is practically on line.

Counter 29167

#2 J.T.Robinson

I was unable to find any corners of 804 and 805, the original notes calling for rk.mds. only at all of the corners of these two Surveys, so I established the East line of 804 and 805 by course and distance from iron pipe at N.W. No. 59; This pipe is marked 59, B 11.

For lines of No. 636 and 640 adjoining these Surveys, please see recent plat and corrected notes.

Kindly let me hear from you regarding the corrections.

Yours very truly,

ER Robinson
Surveyor

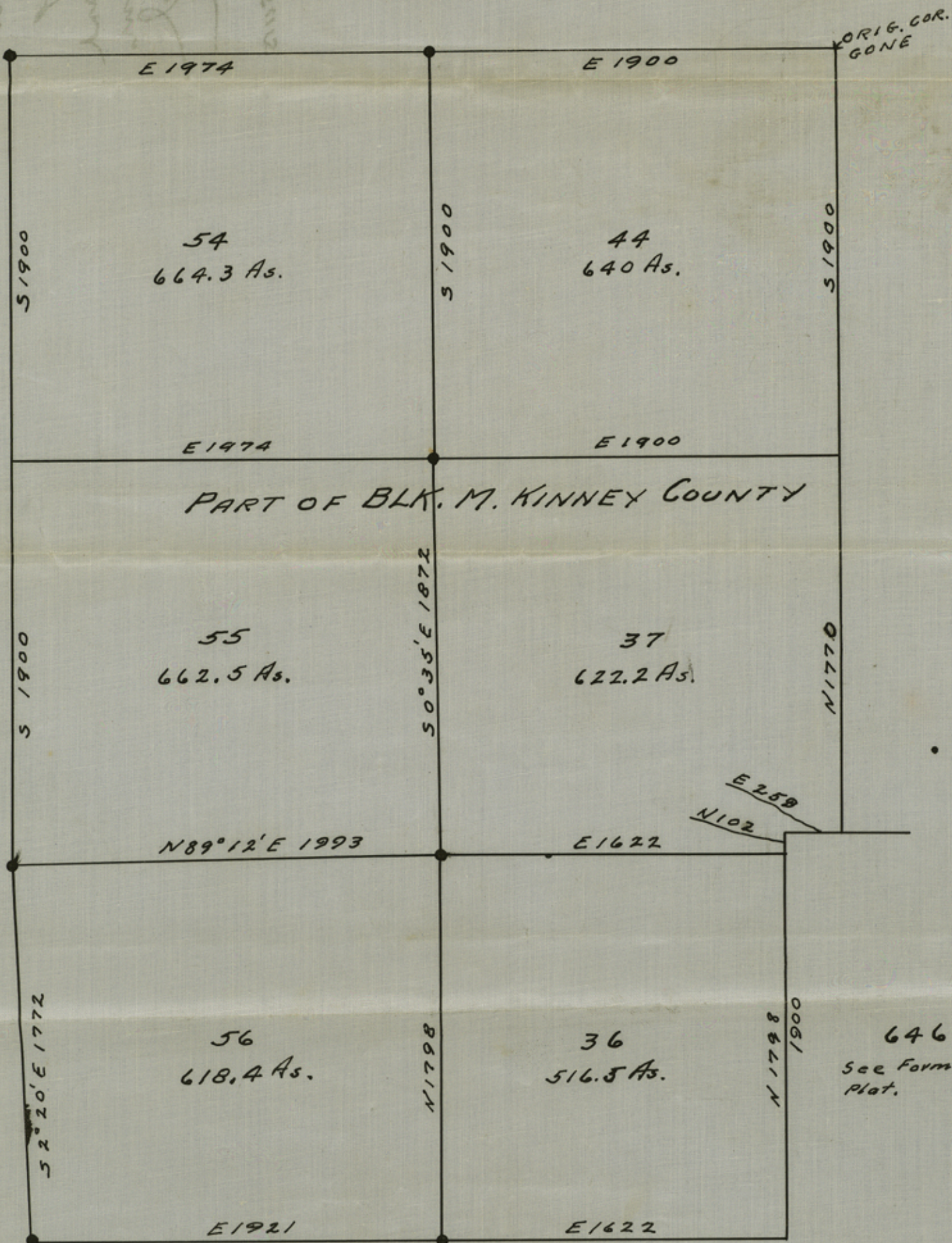
I, E. R. Benson, Licensed Land Surveyor, hereby certify that this is a true and correct plat of the surveys shown hereon as same were disclosed by a survey on the ground made by me in JUNE 1920

AUG. 17-29 E. R. Benson.
Licensed Land Sur.
Uvalde, Tex.

● ORIGINAL CORNERS.

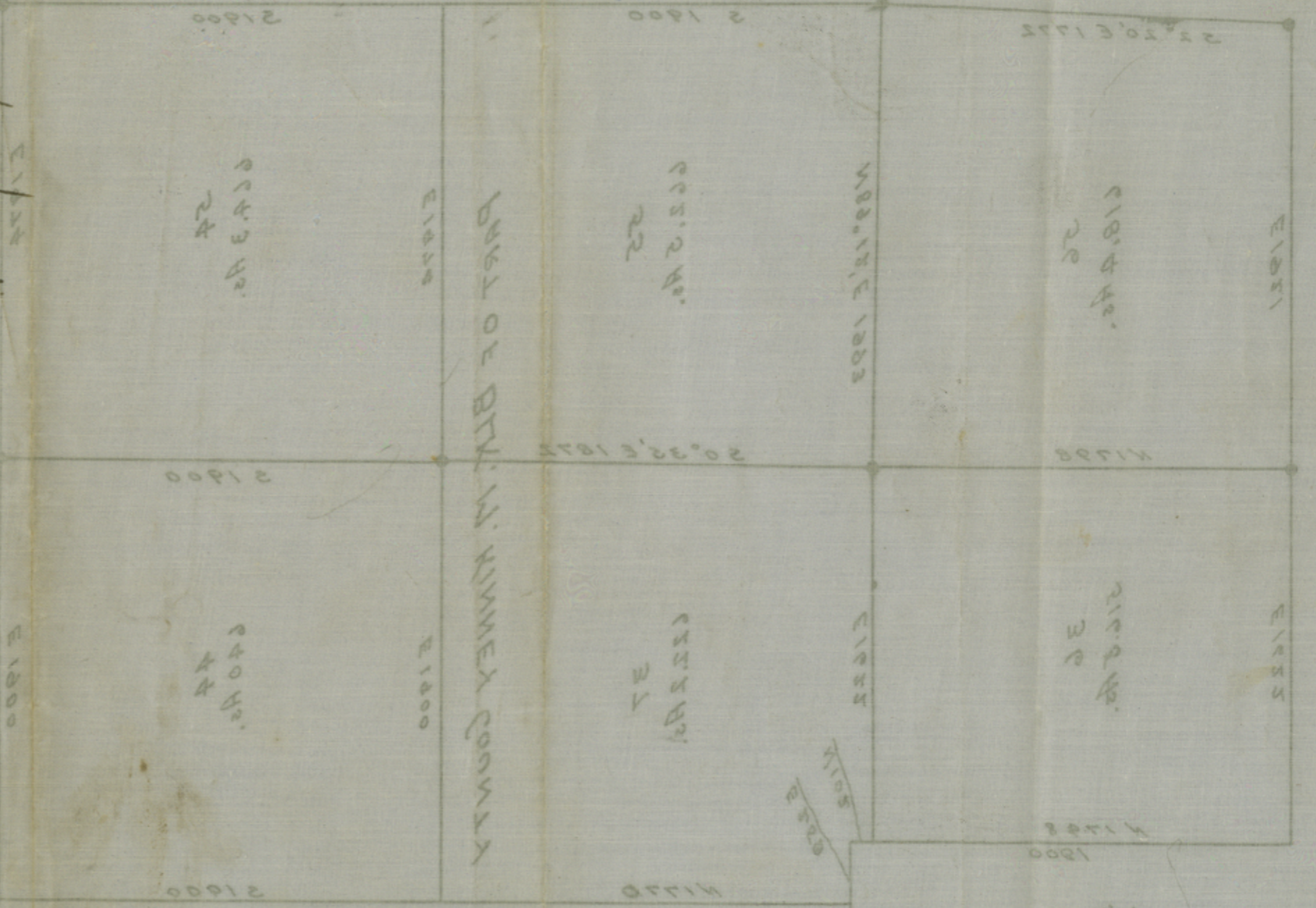
Filed & recorded in the Public Records of Kinney County, Texas, on August 29, 1920.

See Former Plat.



Benson Sketch
No. 28 of 28.
Kinney Co. 28.
filed Sept 3-1929
J. W. Walker - Ch. Clerk and
Acting Comr.
H. F. McDonald
Clerk

RR Benson's sk. of subs.
in BKM, Kinney Co.
Dated Aug. 17, 1929.
Filed Sep. 3, 1929.



WALDE, Tex.
Kinney Co. 28.
filed in Kinney Co. 28.
in 1920
and corrected
and corrected
and corrected

count 29170

See former plat

See former plat