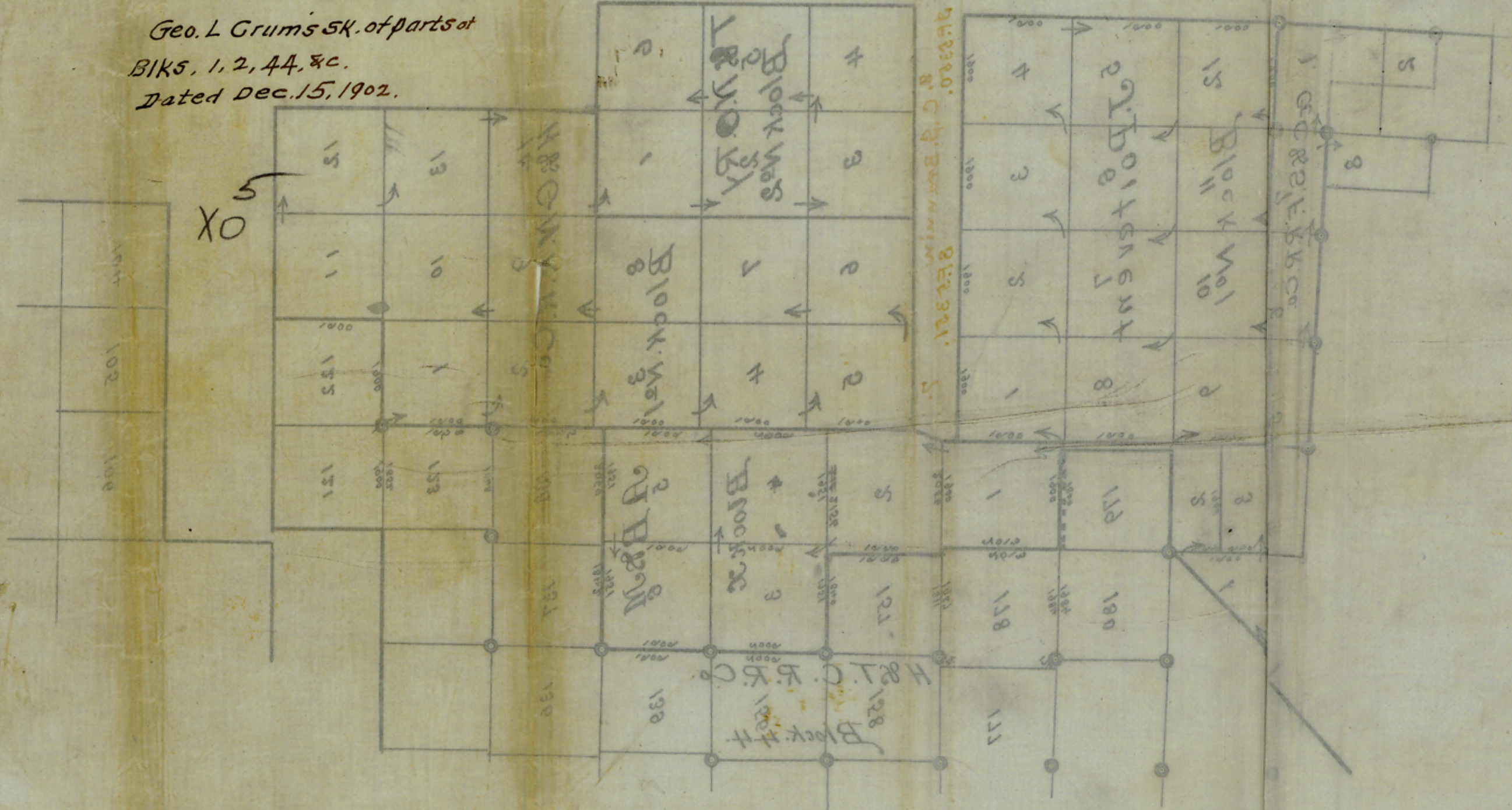


10A
~~10A~~ 10A
 Knox Co. Sketches
 See sketch 10.

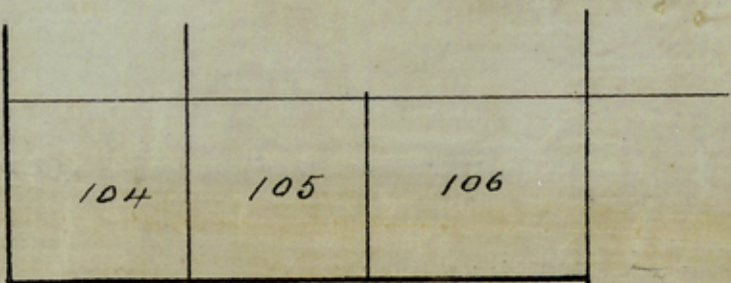
Geo. L. Grims SK. of parts at
 BIKS, 1, 2, 44, &c.
 Dated Dec. 15, 1902.



County
 Land Office: a copy of same having been forwarded to the County Recorder of Knox
 After a thorough investigation and comparison with the original plat and
 Genl. Land Office 15/12/02.

XO
 See sketch 10
 8/30/03

County 29223



Knox Co. 211/15/02
 104
 105
 106

Dated Dec 12, 1902.
 B/Ko. 19, 44, etc.
 Geo. T. Cunniff, Ex. of Knox Co.



8. C. S. Braunnin
 S.F. 5350. S.F. 5351. 7.

Genl. Land Office, 12/15/02.

After a thorough investigation, and consultation with Legal Examiner and
 others, the conclusion is reached, that the most feasible and practicable construction
 of the proposed railway in construction accorded those Blocks by the General
 Land Office: a copy of same having been forwarded to the County Surveyor of Knox
 County

Geo. L. Cunniff,
 Examiner.

See sketch & statement
 X04 in SF-5350 8/25/03
 Geo. Roseberry