

April 8/77

645
275
370

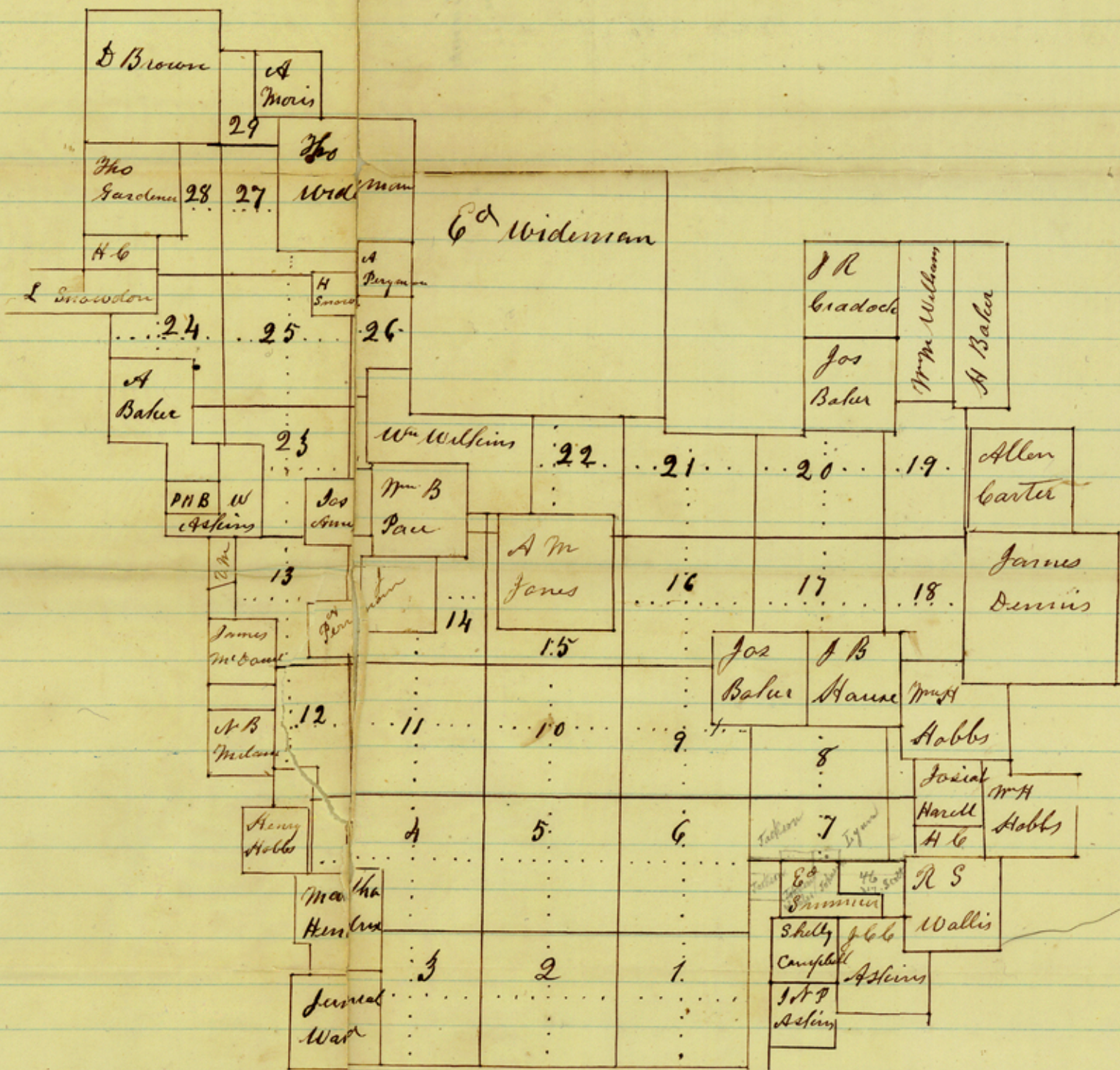


443
720
1721

1901
764 56 234
1736 983
229 7187
328
558

1901
800
1451

counter 29278

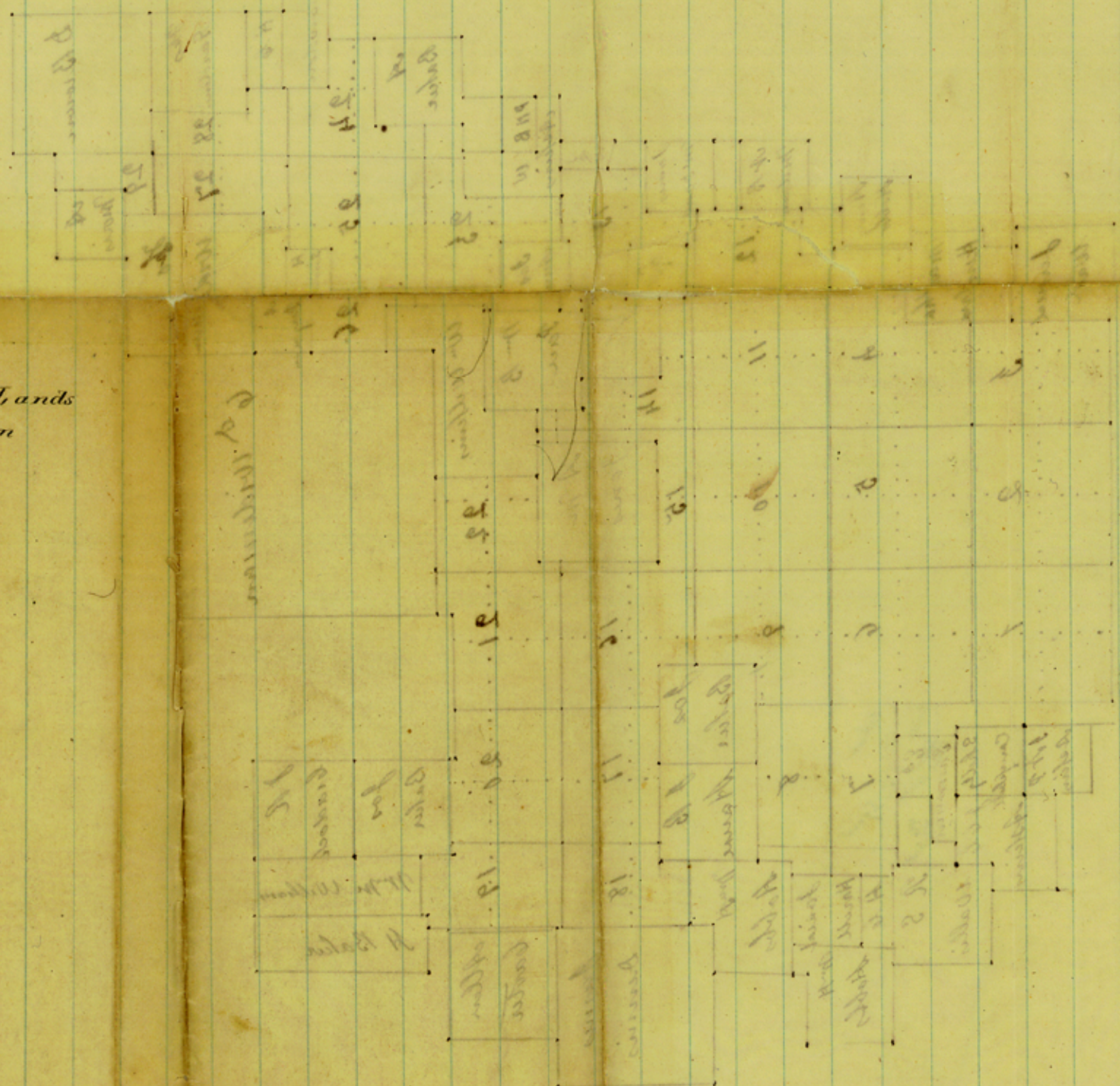


1 2 3
 2000 Nares per inch

University Lands
10 ms. west from
Paris

number 29280

A d



1000 meters per side

4.

Lamarco

3

University Land Sketches.

a, b, c,

counter 29281

b

File 4.

Tamar County.

Subdivision

of

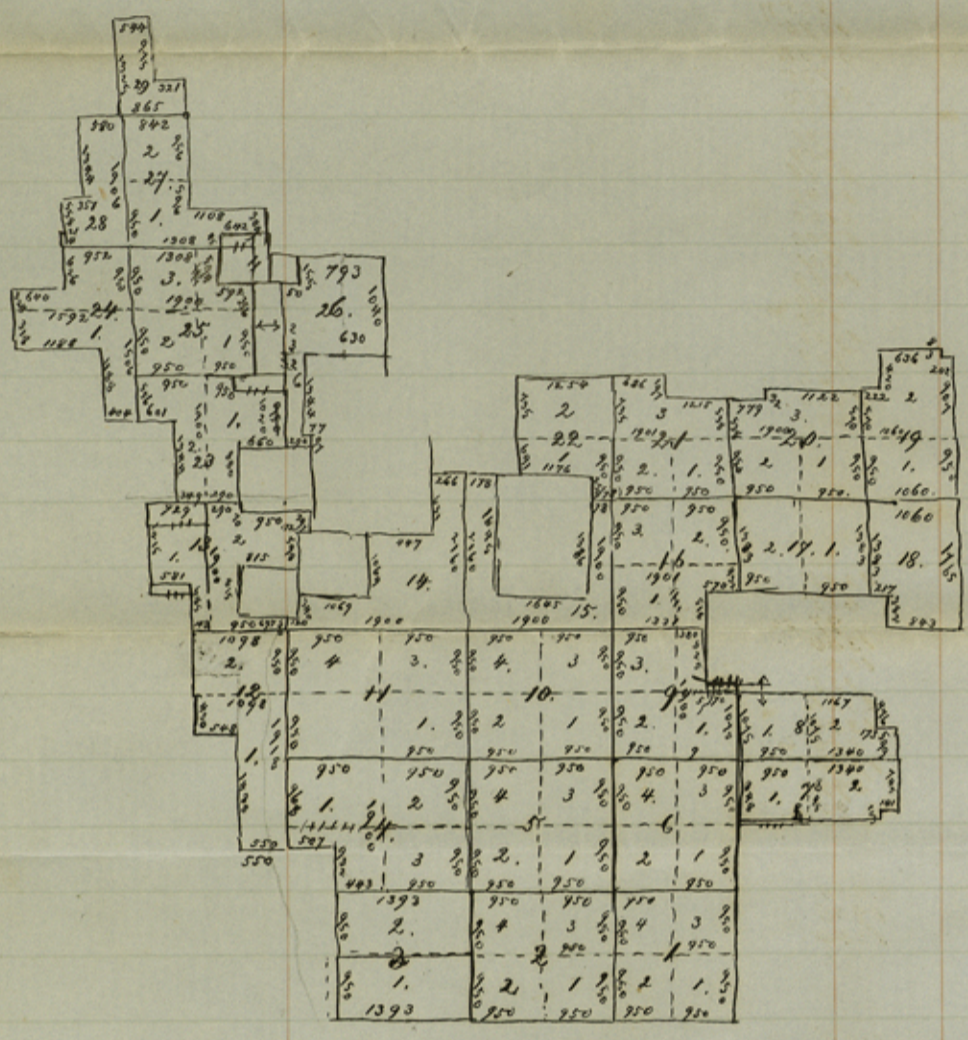
University Leagues.

about 8 miles N70° W from
Paris.

lines shall only be run, one mile apart, establishing corners at every half mile, not less but not exceeding 320

state the quality of land, how much prairie and how much timber mile but not for the same line twice.

} 70 sets of fields



- 5
- 834
- 907
- 950
- 1765
- 420
- 382
- 570
- 950
- 1383
- 32
- 538
- 950
- 950
- 432
- 476
- 599
- 745
- 103
- 518
- 825
- 1075
- 3800
- 735
- 8550
- 735
- 691
- 259
- 1386
- 1645
- 2160
- 5700
- 631
- 1069
- 340
- 120
- 1900
- 968
- 932
- 1900
- 1488
- 430
- 950
- 815
- 598
- 297
- 70
- 1215
- 685
- 97
- 1344
- 1040
- 155
- 2326
- 1344
- 556
- 1900
- 594
- 45
- 309
- 596
- 956
- 2650
- 1906
- 1344
- 562
- 626
- 324
- 318
- 1188

- 33
- 1254
- 686
- 1215
- 1901
- 1066
- 1138
- 3800
- 843
- 2687
- 1331
- 1737
- 873
- 2850
- 1340
- 3290
- 3800
- 9500
- 2786
- 6207
- 1098
- 697
- 987
- 950
- 1019
- 581
- 865
- 1422
- 1459
- 2923
- 1232
- 3492
- 2500

74 902
39 42/100 miles

$$66921 = 35 \frac{22}{100}$$

$$39 \frac{42}{100}$$

$$74 \frac{65}{100} \text{ miles at } \$3.00$$

$$\$ = 223.95$$

$$29 \text{ sections} = \frac{29.00}{\$ 252.95}$$