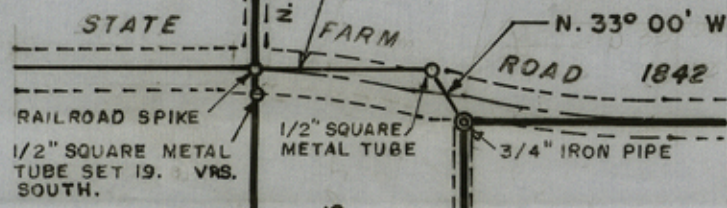


SECTION 65

SECTION 25

⊙ = Corner Marker Found in Place  
○ = Corner Marker Placed on this Survey

PATENT  
VOL. 12-B, NO. 204



Plat Showing Survey of  
 THE N/2 OF THE MID PART OF  
 SURVEY 2, BLOCK A-5  
 PUBLIC SCHOOL LAND  
 LAMB COUNTY, TEXAS

*Bob Veazleong*  
 BOB VEAZLEONG, COMPT.  
 Filed 11-5-1978  
 With Plat Surveyed  
 LAMB County  
 EMB 140  
 EMB 18  
 EMB 140  
 EMB 18



SCALE: 1" = 200 VARAS

HUGO REED & ASSOCIATES, INC.  
 LAND SURVEYORS - CIVIL ENGINEERS  
 1706 14th ST. (806) 763-5642  
 LUBBOCK, TEXAS 79401

I, C. A. Tubbs, Licensed State Land Surveyor,  
 hereby certify that this plat correctly shows the  
 results of an actual survey made by me upon the  
 ground, August 7, 1979.

*C.A. Tubbs*

Licensed State Land Surveyor.

CORRECTED Oct. 17, 1979

*C.A. Tubbs*



RECEIVED  
 OCT 2 1979  
 County Land Office

N/2 OF MID PART OF SURVEY 2, BLOCK A-5  
38.758 Acres

S/2 OF MID PART OF SURVEY 2, BLOCK A-5  
38.82 Acres

B L O C K T-2  
SECTION 40

SECTION 5  
B L O C K A

SEC. 41

SEC. 6

PATENT  
VOL. 98-A  
NO. 418



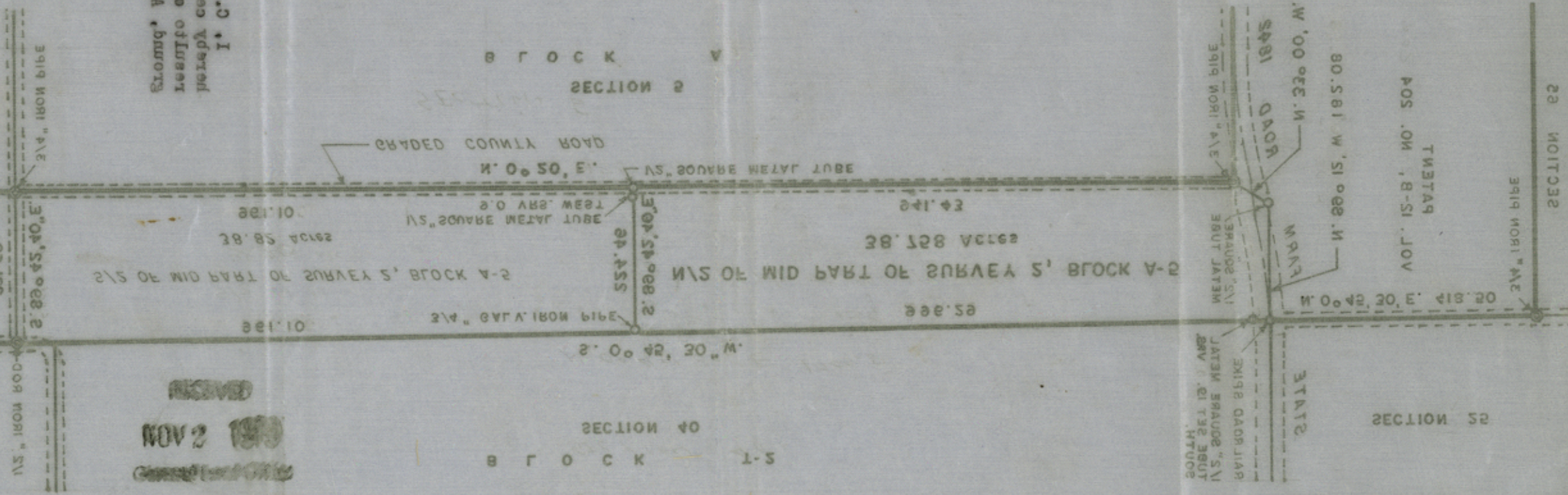
18398 returned counter 29382



General Land Office  
OCT 2 1979  
RECEIVED

CORRESPONDENCE  
ETEL T1.130 03T33R3R03

Blomquist, Vincent J. Todd.  
Leslie of an actual survey made by me upon the  
recovery certify that this list correctly shows the  
I. C. V. Survey, Licensed State Land Surveyor.



Sketch File  
File No. 18  
LAMB County  
Mid Part Survey 2-  
Filed 11-2-1979  
BOB ARMSTRONG, Com'r  
By James E. McCarty

TUBBOCK, JERRY  
1300 IAWY BL. (800) 203-2045  
IOWA SURVEYOR - CIVIL ENGINEER  
HUGO BEED & ASSOCIATES, INC.

SCALE: 1" = 300'

TOWN CORNERS, JERRY  
PUBLIC SCHOOL TOWN  
SUBDIVISION, BLOCK A-2  
THE N/S OF THE MID PART OF  
Block showing survey of

O = Corner Marker Blotched on the Survey  
⊙ = Corner Marker Found in Block

NOV 2 1979  
RECEIVED

858 1041  
NOV 1 1979

18398 returned counter 29382